

Rothwood Center – Last Building!

Flexible Design! – With or without office – Catered to your needs!

Office/Warehouse Leasing @ Rothwood Road
(north of Spring Stuebner)



WAREHOUSE SPACES AVAILABLE FOR LEASE:

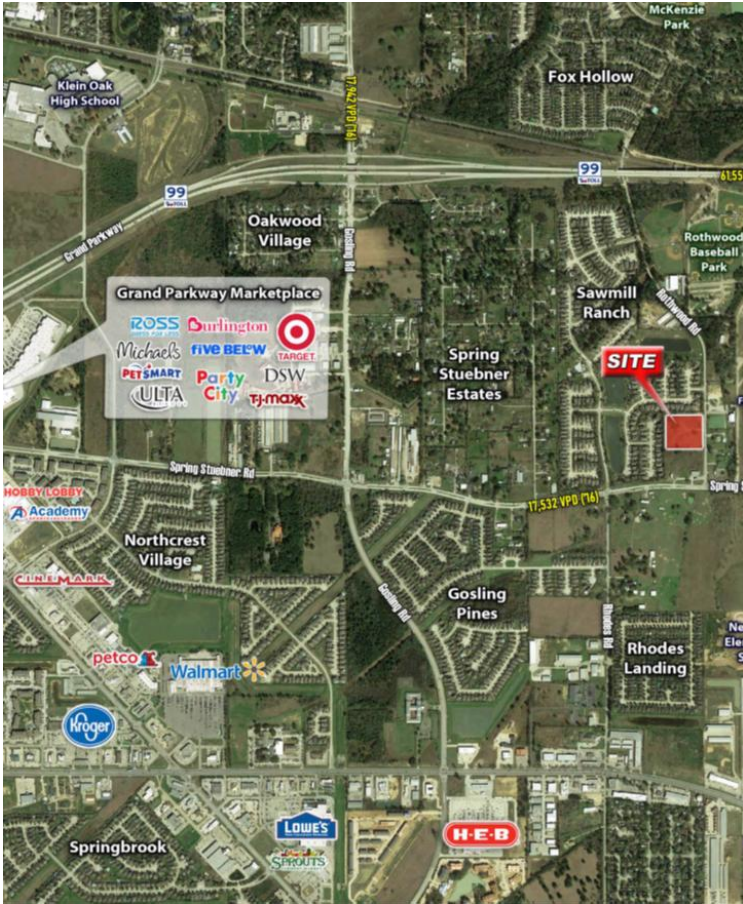
- ✓ 5 units of varying sizes available
- ✓ 3,200 sf – 2,200 sf warehouse with 1,000 sf office
- ✓ 3,000 sf – 2,400 sf warehouse with 600 sf office
- ✓ 1,500 sf – 1,235 sf warehouse with 265 sf office
- ✓ 925 sf – 563 sf warehouse with 362 sf office

PROJECT INFORMATION:

- ✓ 5 Office/warehouse buildings
- ✓ 30 Units from 925 sf to 4,500 sf
- ✓ 126 Parking spaces
- ✓ Easy access (2 driveways) – Access control.
- ✓ Metal buildings with rolling doors
- ✓ All office suites delivered: 100% finished, private restroom and break-out room, open concept, 10 ft ceilings, independent A/C and electric meter.
- ✓ Monument sign available

GREAT LOCATION:

- ✓ 22131 Rothwood Road
- ✓ 550 feet from Spring Stuebner Rd
- ✓ 0.5 miles south of Grand Parkway 99
- ✓ 1 mile east of Gosling Rd
- ✓ 3 miles west of I-45
- ✓ 1.2 miles east of new Amazon Warehouse
- ✓ 1.5 miles east from Grand Parkway Marketplace
- ✓ 1.5 miles west of Springwoods development
- ✓ 4 miles south of The Woodlands



Rothwood Center – New Building

Flexible Design! – With or without office – Catered to your needs!

