

# TONKA BUSINESS CENTER



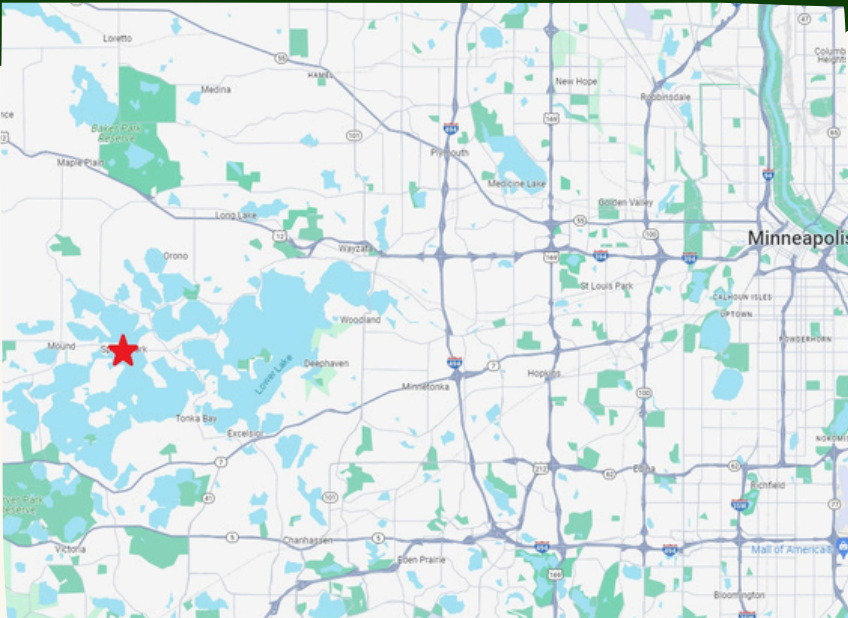
| 4144E Shoreline Drive, Spring Park, MN, 55384 |

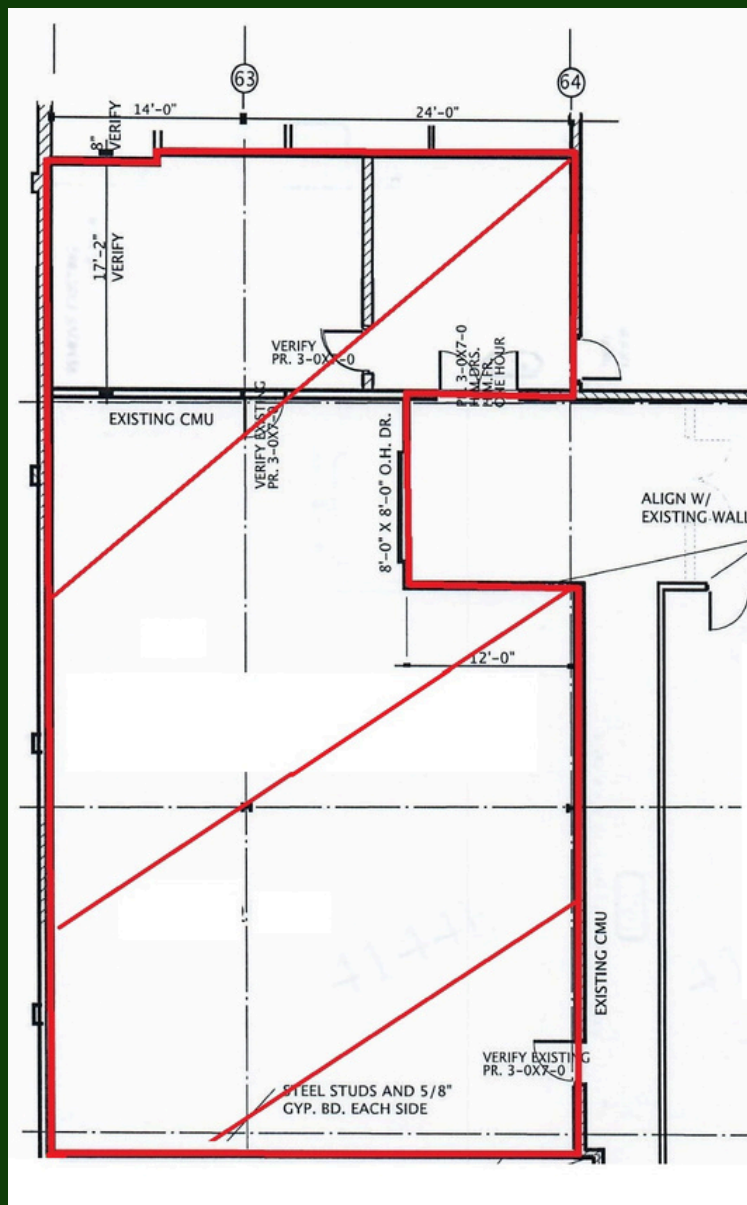
*Outstanding Leasing Value*

**PRICING**  
\$12 PSF Gross

## Property Features

- Available: 3,689 SF of Office and warehouse space
- One drive in door with access to a shared drive lane
- Space includes a small office area
- Ample Parking available
- Move in ready space





## Property Features

- Great access to the Dakota Walking and Bike Trail
- Utilities, internet, garbage removal and restroom cleaning included in the Gross Rate
- Great, small suite option
- 15 minutes from the 394-494 Interchange
- Building Located in the heart of Lake Minnetonka with lake views
- Locally Owned and Professionally Managed

[www.cornerstone-mn.com](http://www.cornerstone-mn.com)

Jack Bутtenhoff | (612) - 723 - 5408  
[jack@cornerstone-mn.com](mailto:jack@cornerstone-mn.com)

Luke Bутtenhoff | (612) - 723 - 2537  
[luke@cornerstone-mn.com](mailto:luke@cornerstone-mn.com)