

AHWATUKEE
FOOTHILLS
HEALTH CENTER

4545 E CHANDLER BOULEVARD, PHOENIX, AZ 85050

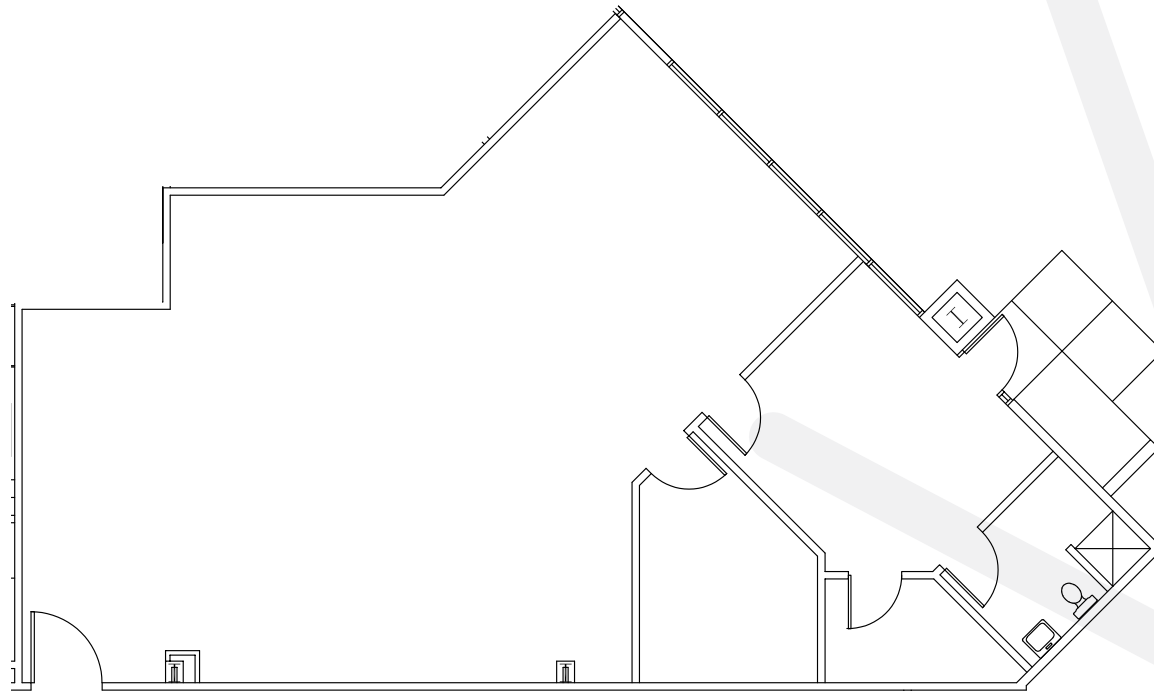
Floor 01

Suite 100

AS-BUILT

2,915 SF

AVAILABLE



RACHAEL THOMPSON
Senior Vice President
602.513.5122
rachael.thompson@kidder.com

PERRY GABUZZI, CCIM
Executive Vice President
602.513.5116
perry.gabuzzi@kidder.com



View Portfolio

km Kidder
Mathews

AHWATUKEE
FOOTHILLS
HEALTH CENTER

4545 E CHANDLER BOULEVARD, PHOENIX, AZ 85050

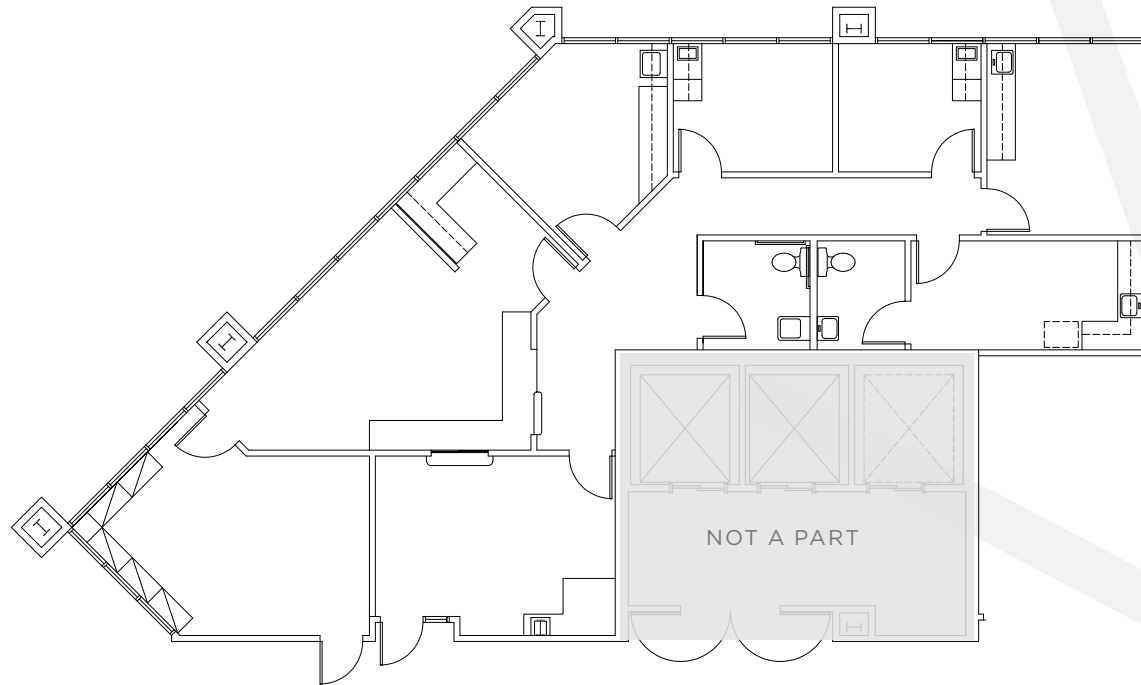
Floor 02

Suite 200

AS-BUILT

1,953 SF

AVAILABLE



RACHAEL THOMPSON
Senior Vice President
602.513.5122
rachael.thompson@kidder.com

PERRY GABUZZI, CCIM
Executive Vice President
602.513.5116
perry.gabuzzi@kidder.com



View Portfolio

km Kidder
Mathews

AHWATUKEE
FOOTHILLS
HEALTH CENTER

4545 E CHANDLER BOULEVARD, PHOENIX, AZ 85050

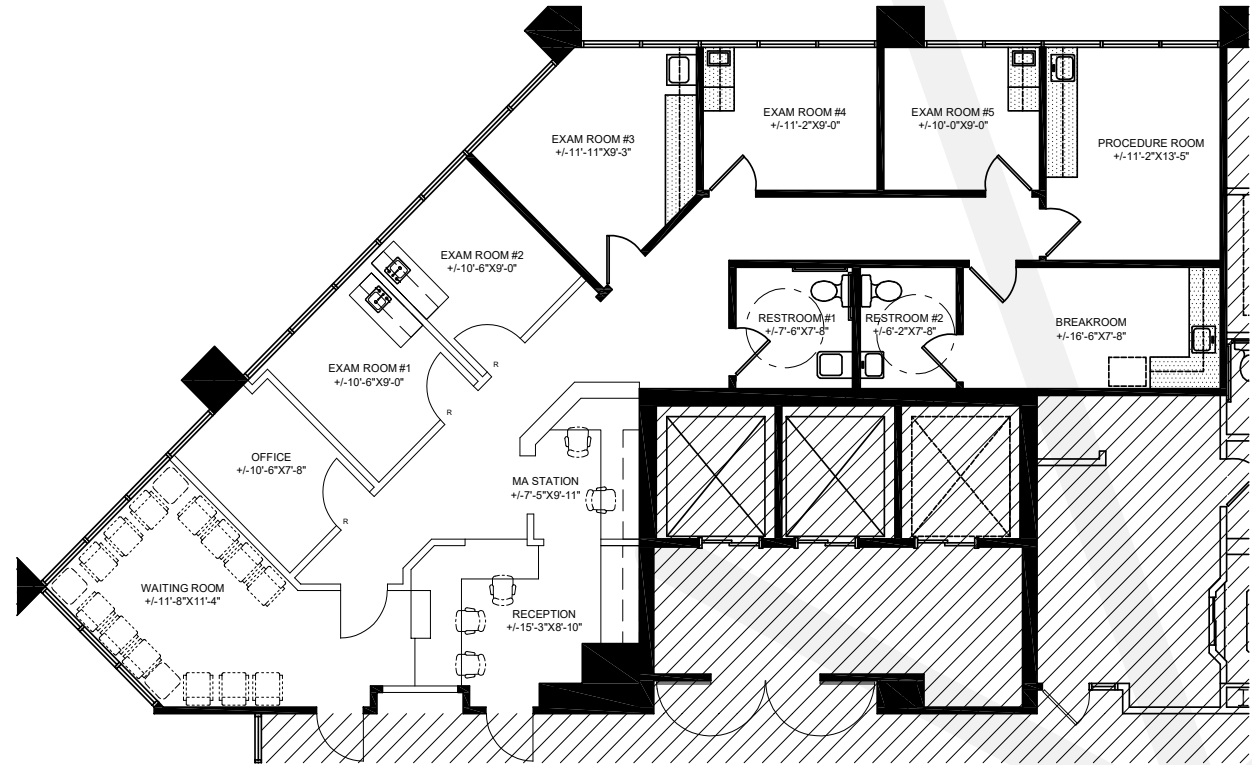
Floor 02

Suite 200

TEST FIT

1,953 SF

AVAILABLE



RACHAEL THOMPSON
Senior Vice President
602.513.5122
rachael.thompson@kidder.com

PERRY GABUZZI, CCIM
Executive Vice President
602.513.5116
perry.gabuzzi@kidder.com



View Portfolio

AHWATUKEE
FOOTHILLS
HEALTH CENTER

4545 E CHANDLER BOULEVARD, PHOENIX, AZ 85050

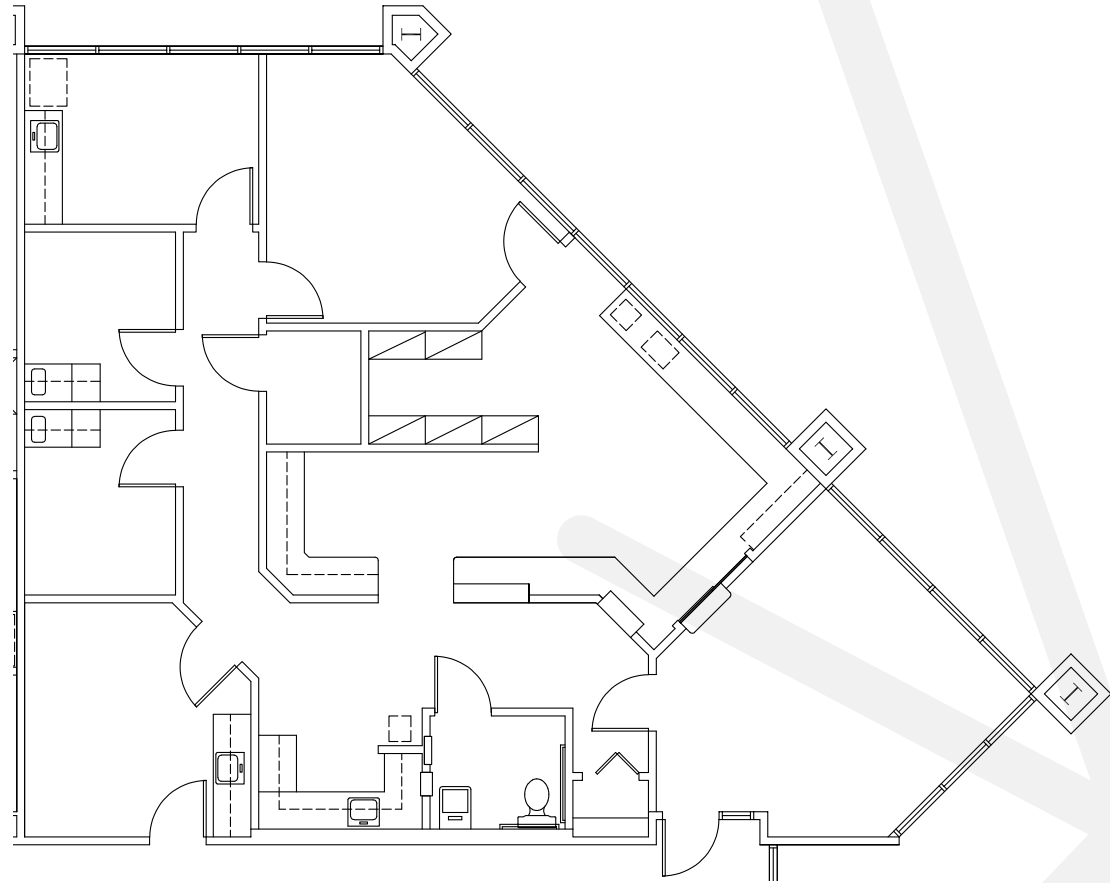
Floor 02

Suite 204

AS-BUILT

1,894 SF

AVAILABLE



RACHAEL THOMPSON
Senior Vice President
602.513.5122
rachael.thompson@kidder.com

PERRY GABUZZI, CCIM
Executive Vice President
602.513.5116
perry.gabuzzi@kidder.com



View Portfolio

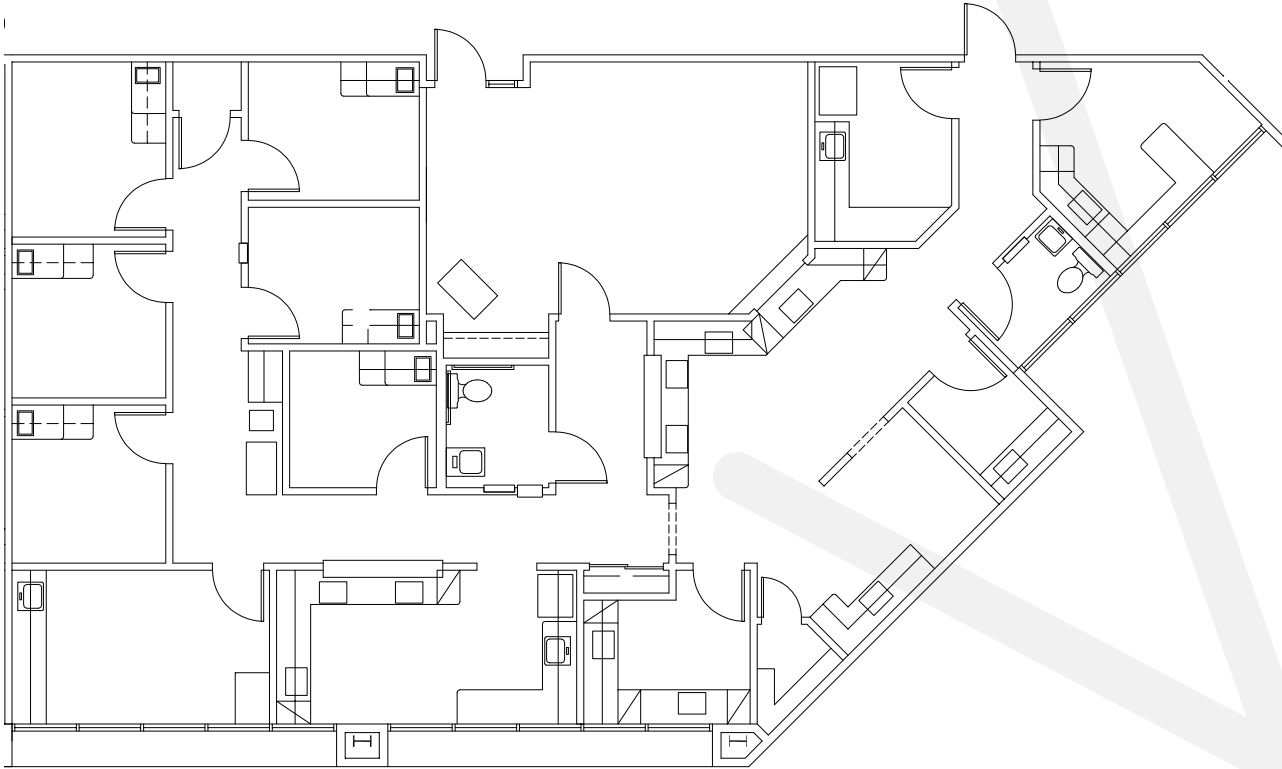
km Kidder
Mathews

AHWATUKEE
FOOTHILLS
HEALTH CENTER

Floor 02

Suite 206
AS-BUILT

2,752 SF
AVAILABLE



RACHAEL THOMPSON
Senior Vice President
602.513.5122
rachael.thompson@kidder.com

PERRY GABUZZI, CCIM
Executive Vice President
602.513.5116
perry.gabuzzi@kidder.com



View Portfolio

AHWATUKEE
FOOTHILLS
HEALTH CENTER

4545 E CHANDLER BOULEVARD, PHOENIX, AZ 85050

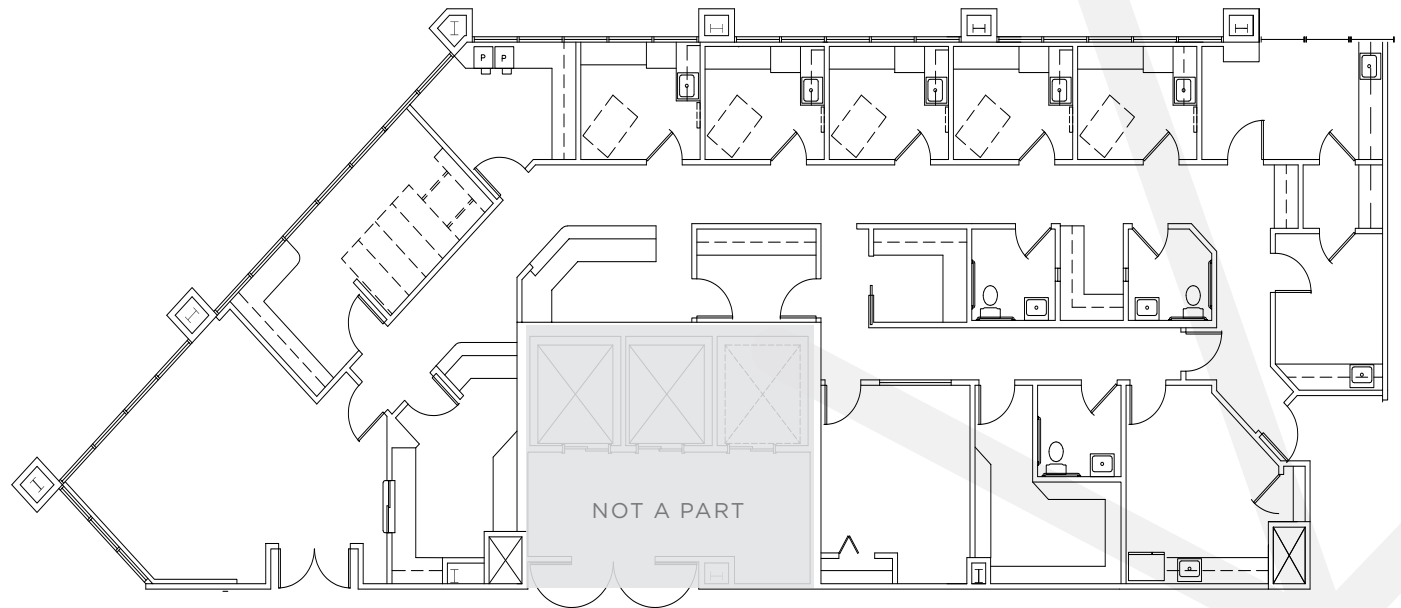
Floor 03

Suite 300

AS-BUILT

3,843 SF

AVAILABLE



RACHAEL THOMPSON
Senior Vice President
602.513.5122
rachael.thompson@kidder.com

PERRY GABUZZI, CCIM
Executive Vice President
602.513.5116
perry.gabuzzi@kidder.com



View Portfolio

km Kidder
Mathews

