



**Property Type:**  
Unimproved Land  
Excellent Development  
Potential

**Sale Price:**  
\$25,000.00 per acre

**Land Size:**  
+- 81.4 acres

**Access:**  
Exit Hwy. 308 Clinton,  
then south on  
Frontage Rd. and  
Little Acres Rd.

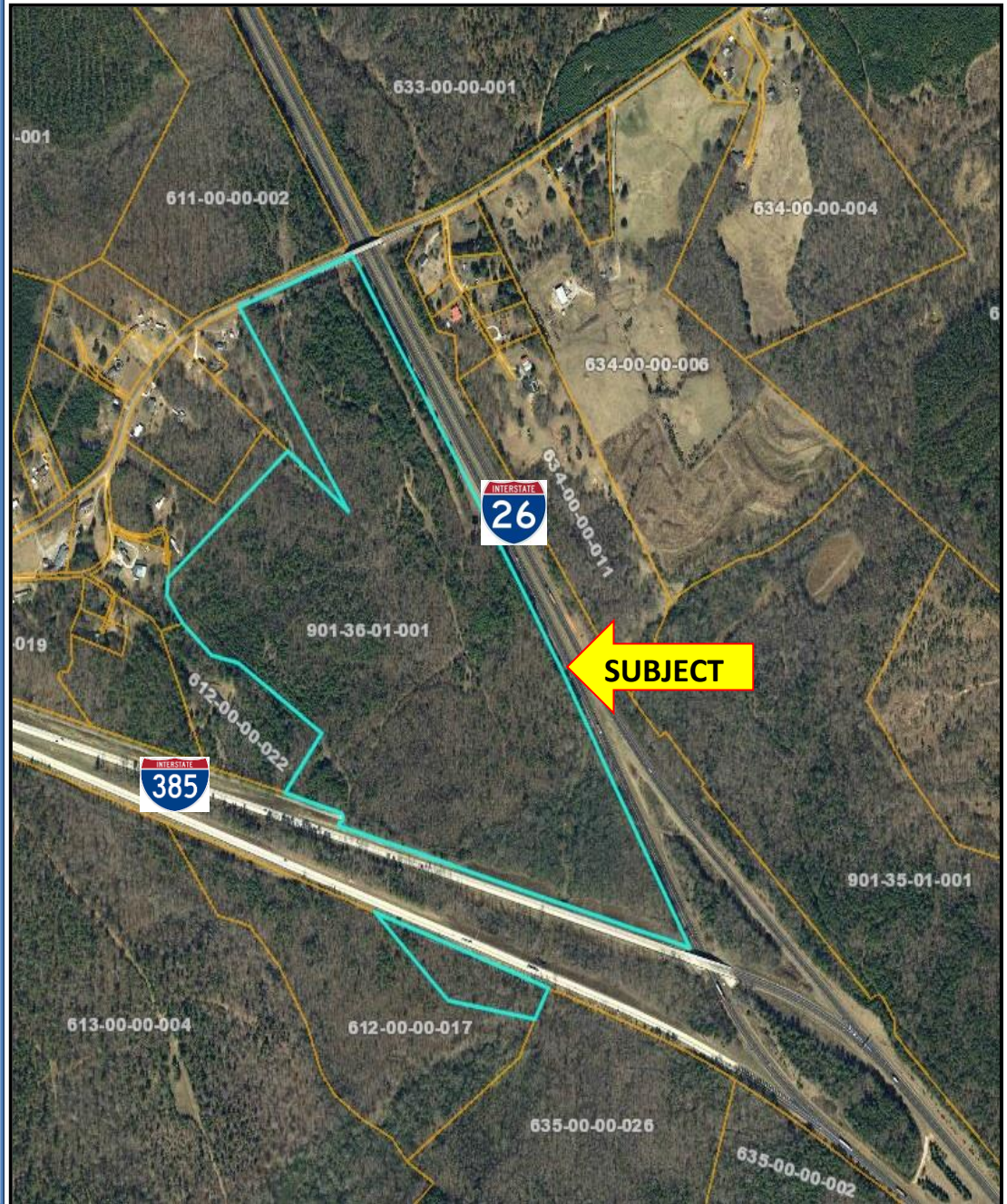
1677' Frontage on I-  
385 & 2606' Frontage  
on I-26

**Zoning:**  
I-1 Industrial  
City of Clinton, SC

**Utility Providers:**  
Laurens County  
Electric Cooperative  
City of Clinton DPW

**Tax Map #:**  
Laurens County, SC  
901-36-01-001

## Available For Sale/Lease/Build to Suit Beard Fork Site Clinton, SC



M.S. Shore Company, Inc.  
904 N. Church St.  
Greenville, SC 29601

Phone (864) 235-3898  
Fax (864) 235-0448  
[msshore@msshore.com](mailto:msshore@msshore.com)

No warranty or representation, expressed or implied is made as to the accuracy of the information contained herein and same is submitted subject to errors, omissions, change of price, rental or other conditions, withdrawal without notice and to any special listing conditions imposed by our principals.

## Locator Map



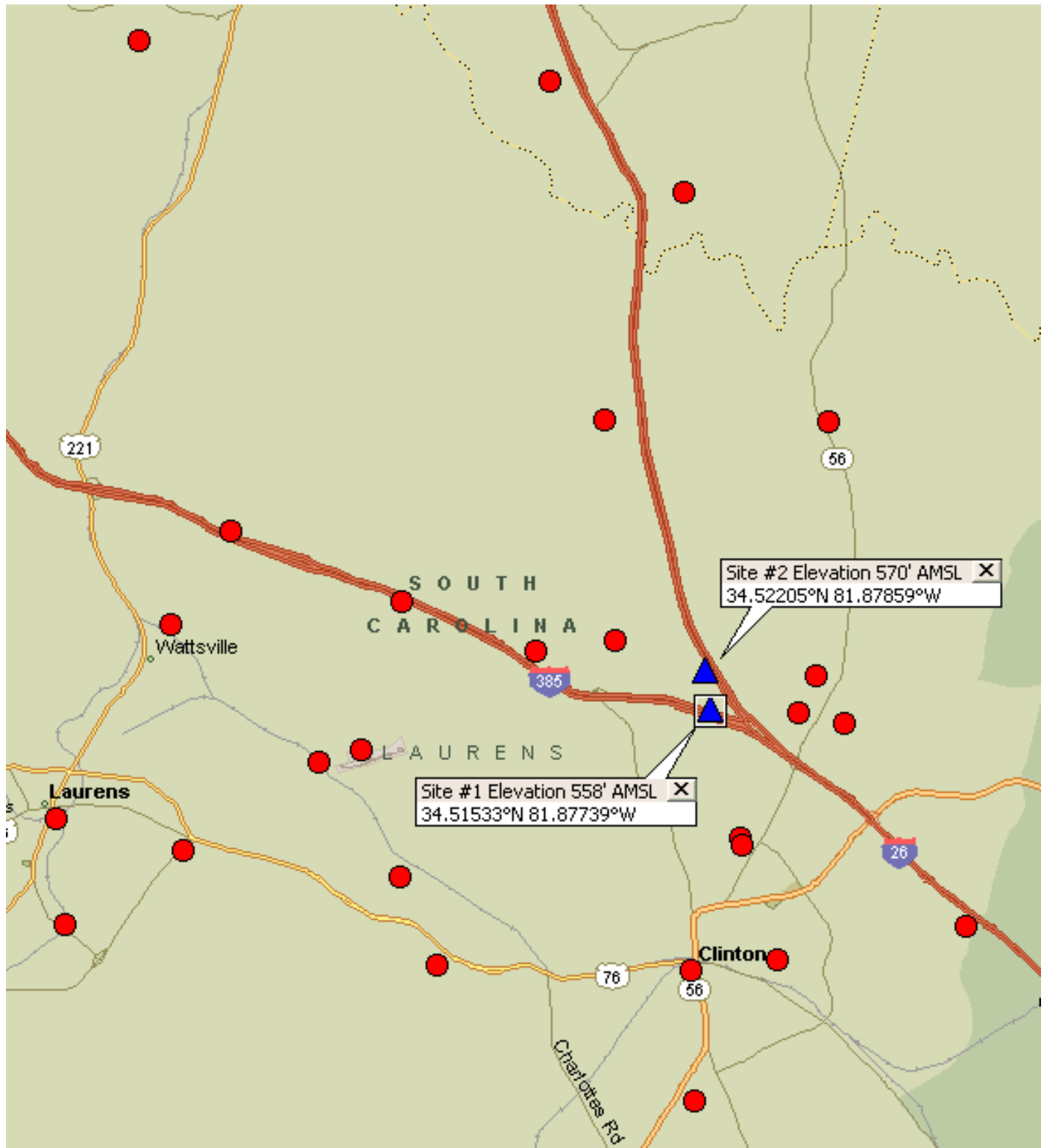
M.S. Shore Company, Inc.  
904 N. Church St.  
Greenville, SC 29601

Phone (864) 235-3898  
Fax (864) 235-0448  
msshore@msshore.com

No warranty or representation, expressed or implied is made as to the accuracy of the information contained herein and same is submitted subject to errors, omissions, change of price, rental or other conditions, withdrawal without notice and to any special listing conditions imposed by our principals.

# SHORE

M.S. SHORE COMPANY, INC.



M.S. Shore Company, Inc.  
904 N. Church St.  
Greenville, SC 29601

Phone (864) 235-3898  
Fax (864) 235-0448  
[msshore@msshore.com](mailto:msshore@msshore.com)

No warranty or representation, expressed or implied is made as to the accuracy of the information contained herein and same is submitted subject to errors, omissions, change of price, rental or other conditions, withdrawal without notice and to any special listing conditions imposed by our principals.

