

FOR SALE

NWA NATIONAL AIRPORT (XNA)



← HWY 264 →

AIRPORT BLVD →



HENDRIX ROAD

HWY 264 & HENDRIX RD, NORTHWEST ARK 20.5 ACRES NEAR NWA NATIONAL AIRPORT

The last remaining commercially zoned and privately owned property, located at the south entrance to XNA (Northwest Arkansas National Airport). The total 20.5 acre +/- tract is available and divisible, with major frontage along Hwy 264 and Hendrix Road. (10 acres +/-/10.5 acres +/-) An important note is that annexation of land has begun for the connection of a limited access road that will connect the South entrance of XNA to the recently completed I-49/I-612 exchange that is at the intersection of Hwy 12 south of Cave Springs. The four mile, 4-lane access road has an estimated completion date of late 2026. ARDOT groundbreaking was April 2024.



\$3,920,400 (Full 20.5 AC +/-)

\$2,866,900 (10.5 AC +/-)

\$1,633,500 (10 AC +/-)



ZONED COMMERCIAL, Benton County, Ark.



LOT DIMENSIONS:

10.5 AC +/- : 800' Hwy Frontage x 570' +/-

10 AC +/- : 510' Hendrix Rd Frontage x 860' +/-



MAJOR ROAD FRONTAGE



NEAR PUBLIC TRANSPORTATION

Pat Morrison
EXECUTIVE BROKER

5204 W. VILLAGE PKWY | SUITE 9

ROGERS, AR 72758

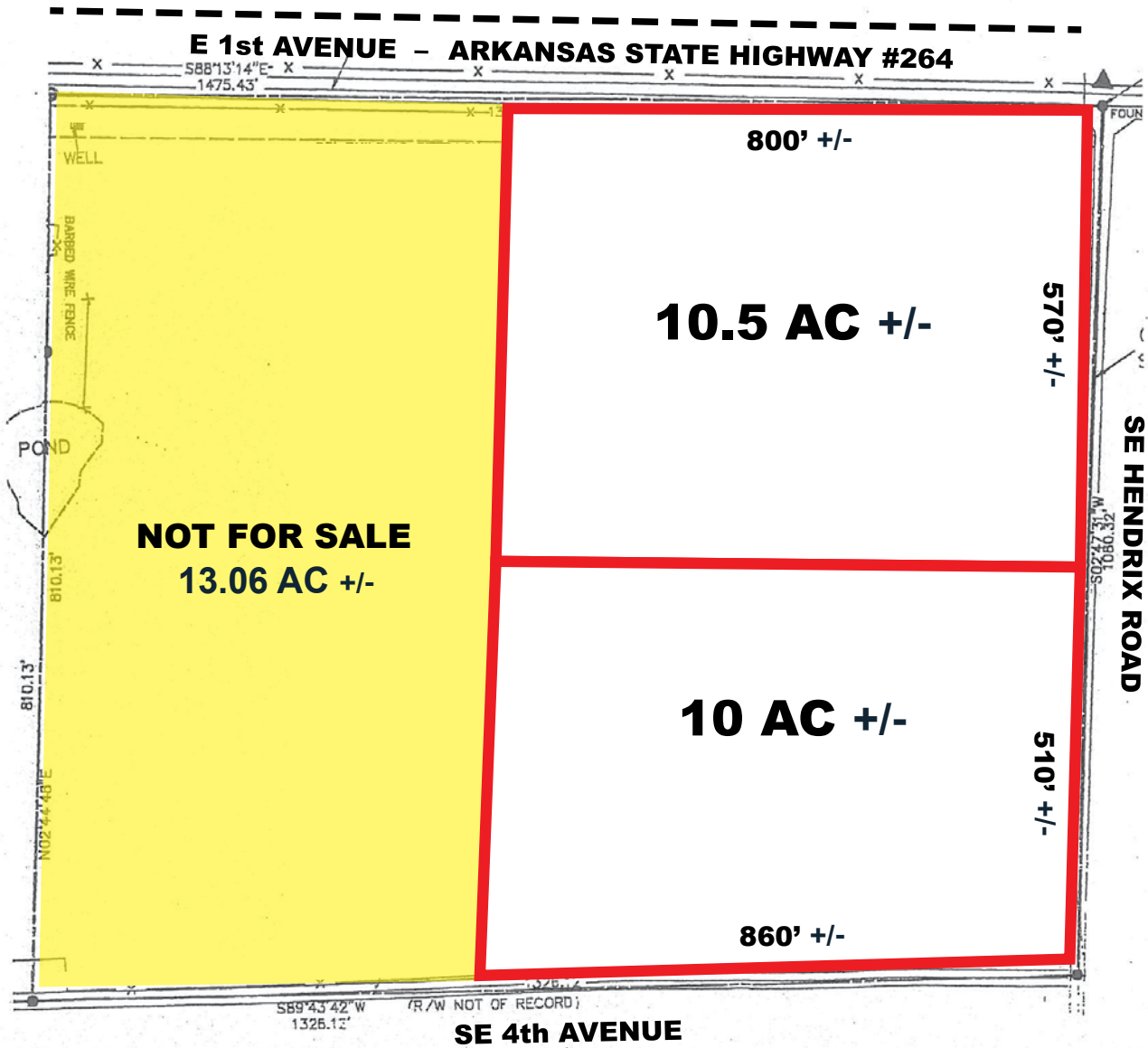
P. 479-464-4292

C. 479-936-4200

PatMorrison@dvrxgroup.com



**DEVEREUX
GROUP**



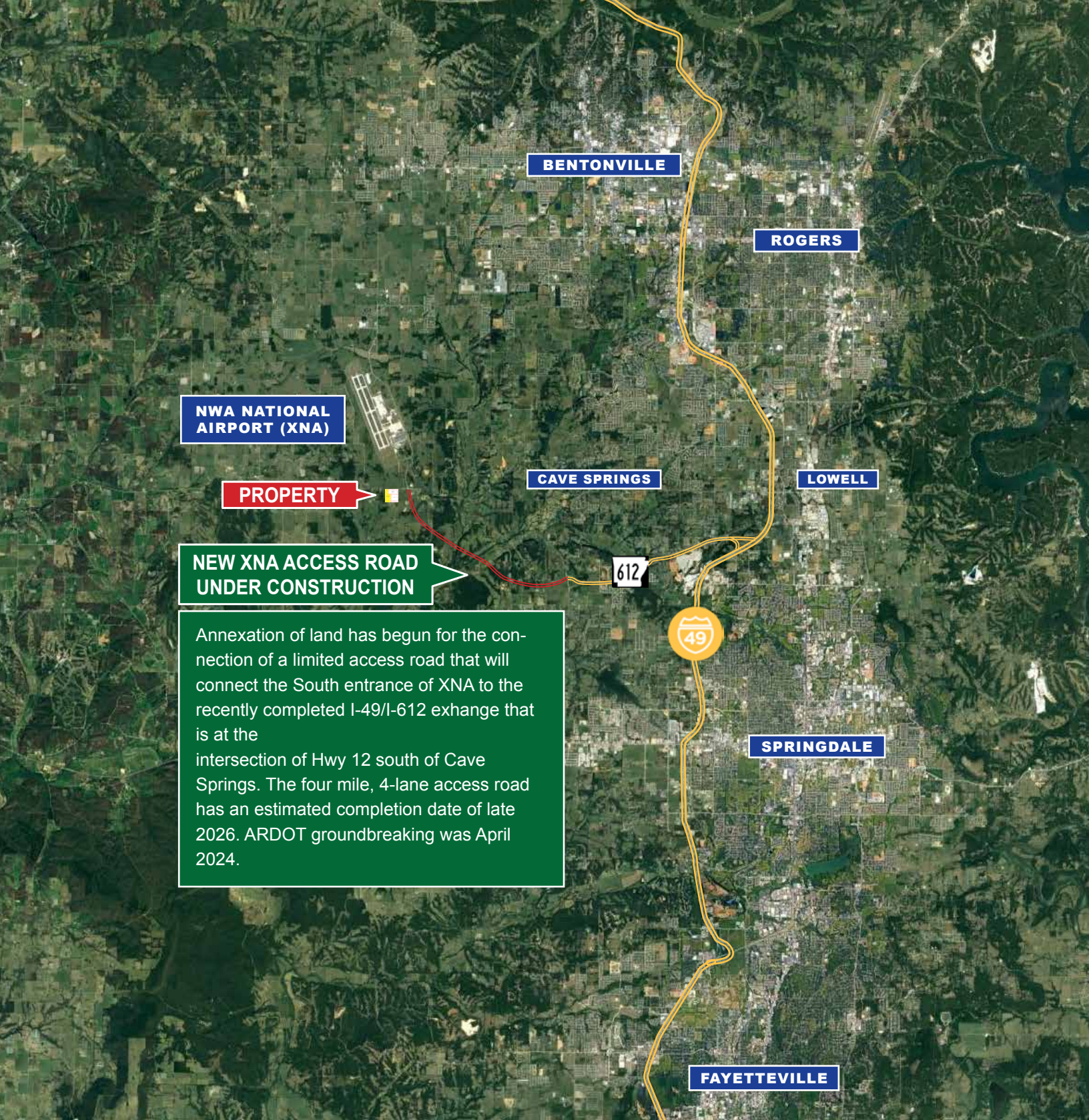
\$3,920,400 (Full 20.5 AC +/-)
\$2,866,900 (10.5 AC +/-)
\$1,633,500 (10 AC +/-)

HWY 264 & HENDRIX RD, NORTHWEST ARK

Pat Morrison
EXECUTIVE BROKER

5204 W. VILLAGE PKWY | SUITE 9
ROGERS, AR 72758
P. 479-464-4292
C. 479-936-4200
PatMorrison@dvrxgroup.com





NWA NATIONAL AIRPORT (XNA)

PROPERTY

NEW XNA ACCESS ROAD UNDER CONSTRUCTION

Annexation of land has begun for the connection of a limited access road that will connect the South entrance of XNA to the recently completed I-49/I-612 exchange that is at the intersection of Hwy 12 south of Cave Springs. The four mile, 4-lane access road has an estimated completion date of late 2026. ARDOT groundbreaking was April 2024.

BENTONVILLE

ROGERS

CAVE SPRINGS

LOWELL

612



SPRINGDALE

FAYETTEVILLE

HWY 264 & HENDRIX RD, NORTHWEST ARK

Pat Morrison
EXECUTIVE BROKER

5204 W. VILLAGE PKWY | SUITE 9
ROGERS, AR 72758
P. 479-464-4292
C. 479-936-4200
PatMorrison@dvrxgroup.com

