



For Lease

895 Flatbush Avenue

Prime Flatbush
Full Building Opportunity

15,000
SF

Division Options
Available

MRG
Momentum Realty Group

Property Details

895 Flatbush Avenue

OVERVIEW

ADDRESS	895 Flatbush Ave, Brooklyn, NY 11226
CROSS STREETS	Church Ave and Snyder Ave
NEIGHBORHOOD	Flatbush

SPACE DETAILS

TOTAL SIZE	15,000 sq ft
LOWER LEVEL (SELLING)	4,000 sq ft
GROUND FLOOR	4,300 sq ft
SECOND FLOOR	4,000 sq ft
3RD FLOOR	2,700 sq ft
CEILING HEIGHT	13 ft
FRONTAGE	45 ft

HIGHLIGHTS

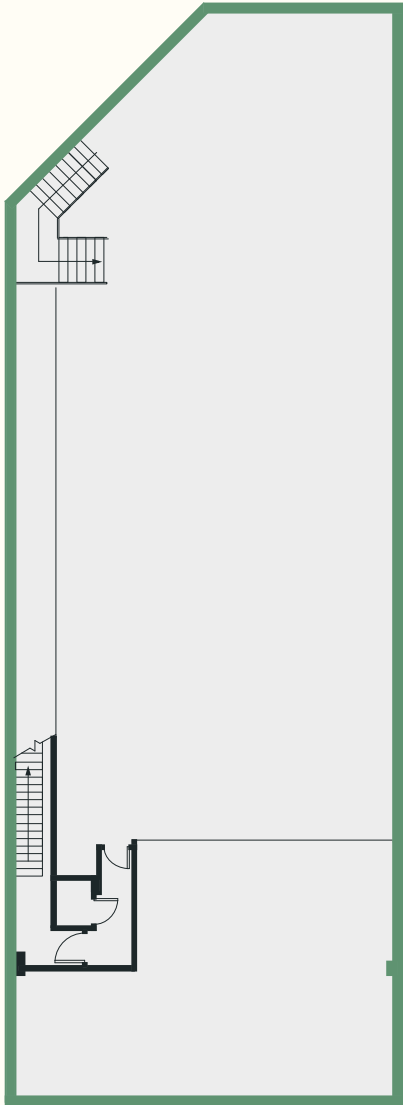
- Prime Flatbush Full Building Opportunity
- Flagship Signage Opportunity
- Build to Suit and Division Options Available



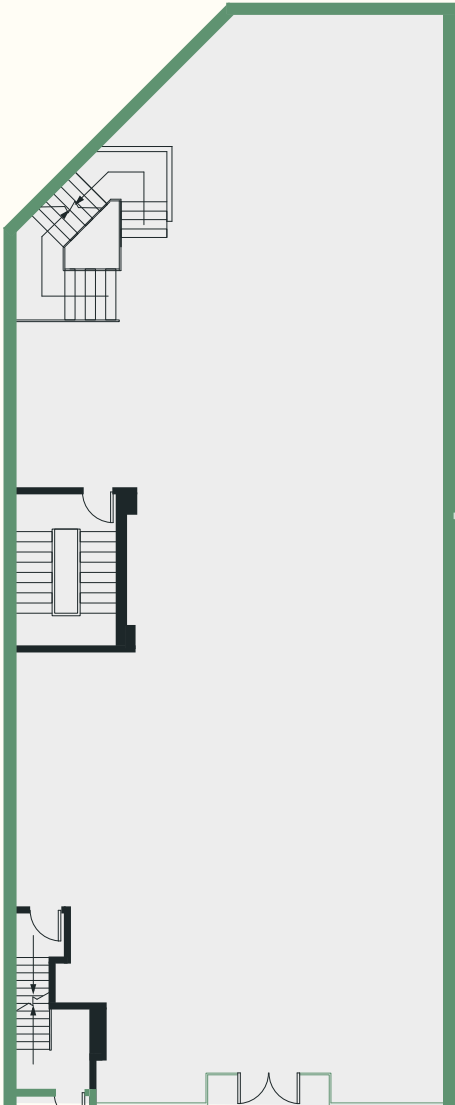
More Than Brokers.
Trusted Partners.

Floor Plan

895 Flatbush Avenue



Basement
4,000 sq ft

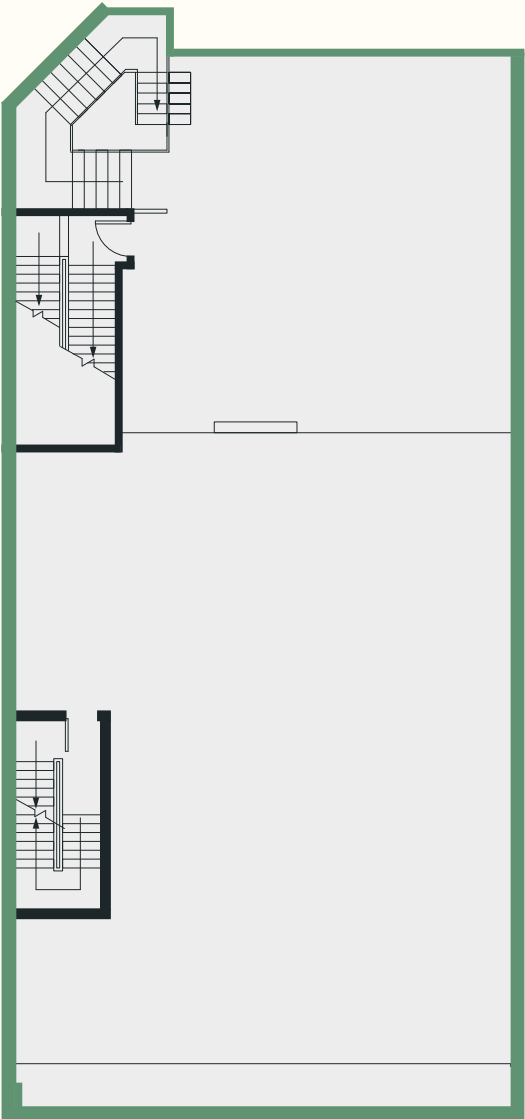


Ground Floor
4,300 sq ft

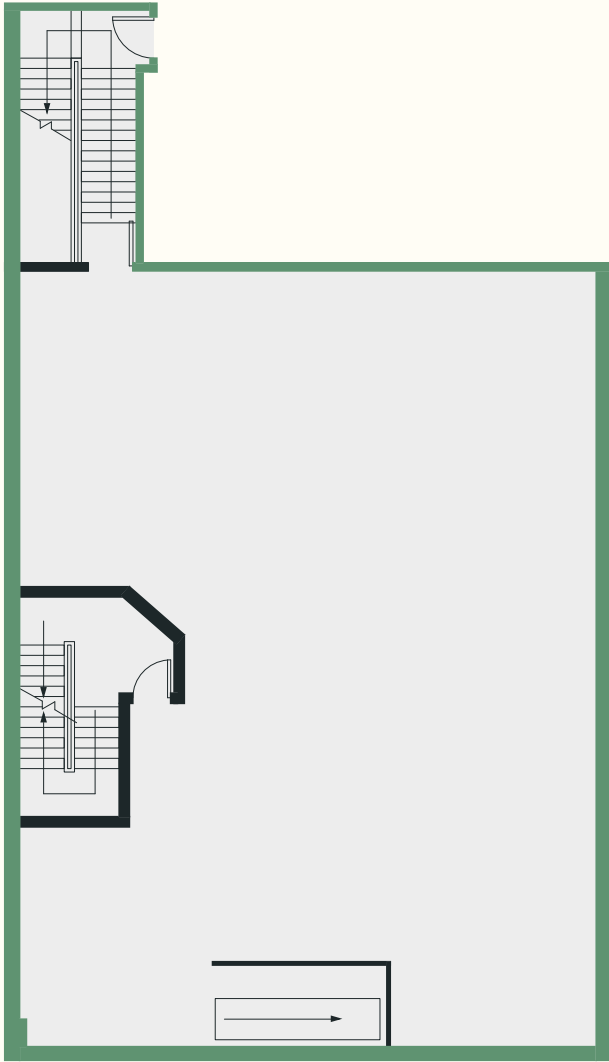
Floor plan is representational. Dimensions subject to field verification.

Floor Plan

895 Flatbush Avenue



2nd Floor
4,000 sq ft



3rd Floor
2,700 sq ft

Floor plan is representational. Dimensions subject to field verification.

Location

895 Flatbush Avenue

TRANSPORTATION



B35 Buses

1 min walk to bus lines



Train B, Q

5 min walk to subway



LGA Airport

25 min drive

JFK Airport

28 min drive

EWR Airport

40 min drive

DEMOGRAPHICS



Population

145,308



Median Household Income

\$76,842



Median Home Value

\$918,400





895 Flatbush Avenue

895 Flatbush Avenue

Brooklyn, NY 11226

15,000 sq ft · For Lease

INQUIRIES

To arrange a showing or discuss leasing terms, please reach out to one of our agents directly.

Jonathan Lib

Jonathan@mrgny.com
212-314-4684 · Ext. 114

Solomon Betesh

Solb@mrgny.com
212-314-4684 · Ext. 111

Eddie Keda

Eddie@mrgny.com
212-314-4684 · Ext. 104

All information supplied in this marketing presentation and/or flyer is from sources deemed reliable and is furnished subject to errors, omissions, modifications, removal of listings from sale/lease and to any listing condition. Any square footage, dimensions, floor plans and/or technical data set forth are approximations and are subject to further elaboration/confirmation.