



Colliers



310 TOWER

310 East 4500 South
Murray, Utah 84107

For Lease

\$21.50 SF, Full Service

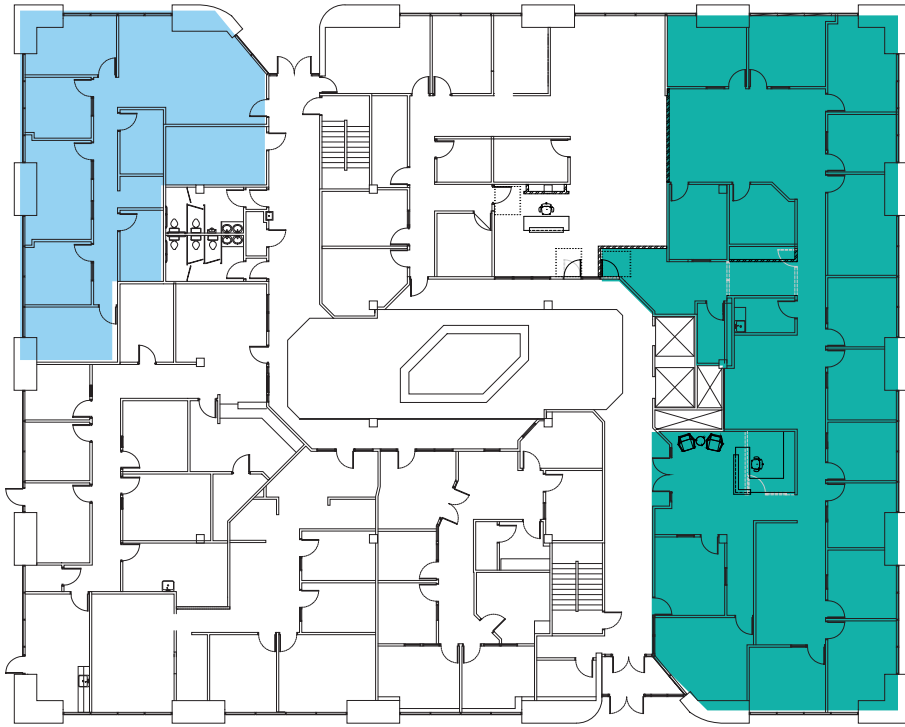
Derek Sawaya

Associate Vice President
+1 801 947 8341
derek.sawaya@colliers.com

Property Information

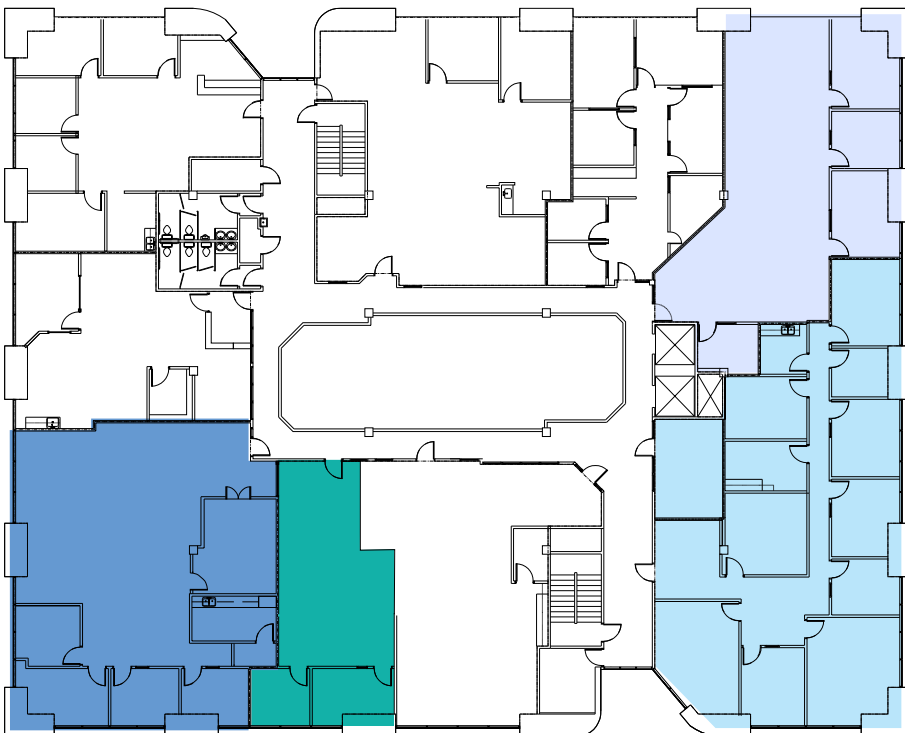
- \$1 million in building upgrades recently completed
- Three minutes to I-15 freeway
- 20 minutes from anywhere in Salt Lake County
- Fiber available through Utopia, CenturyLink, Integra
- 4/1,000 free on-site parking
- Panoramic mountain views

Floor Plans








1st Floor

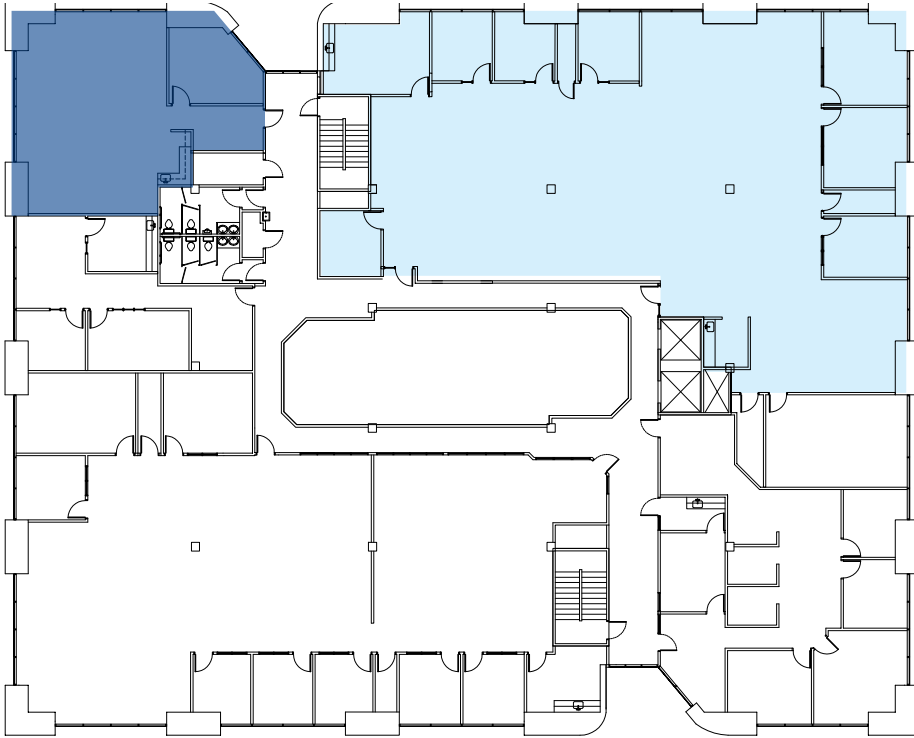
-  Suite 100 - 6,150 RSF
-  Suite 108 - 2,139 RSF



2nd Floor

-  Suite 200 - 2,907 RSF
-  **Virtual Tour**
-  Suite 240 - 3,233 RSF
-  Suite 260 - 1,167 RSF
-  Suite 270 - 2,493 RSF

Floor Plans

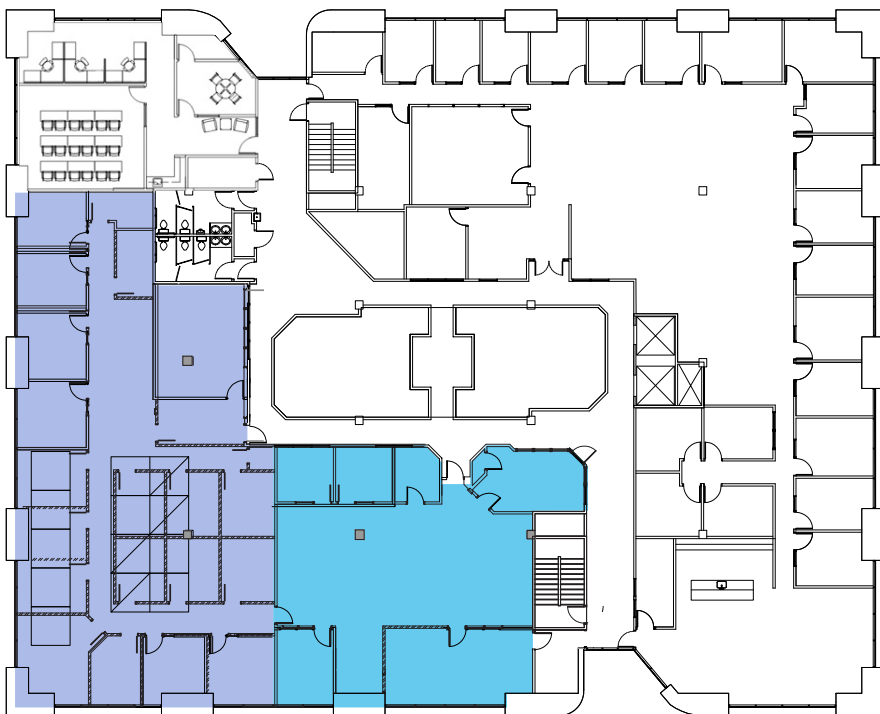


3rd Floor

 Suite 300 - 6,775 RSF

[Virtual Tour](#)

 Suite 340 - 1,825 RSF



4th Floor

 Suite 405 - 2,852 RSF

 Suite 410 - 4,663 RSF

310 E 4500 S | For Lease



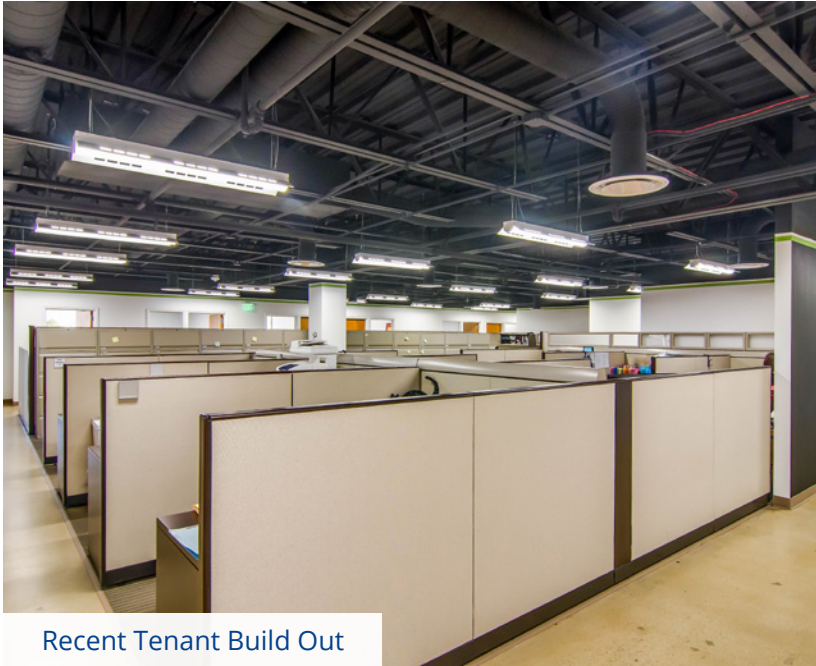
Remodeled Common Area



Typical Turn Key Build Out



Recent Tenant Build Out



Recent Tenant Build Out





Colliers
 111 S. Main St., Suite 2200
 Salt Lake City, UT 84111
 Main: +1 801 947 8300
 colliers.com

Derek Sawaya
 Associate Vice President
 +1 801 947 8341
 derek.sawaya@colliers.com

This document has been prepared by Colliers International for advertising and general information only. Colliers International makes no guarantees, representations or warranties of any kind, expressed or implied, regarding the information including, but not limited to, warranties of content, accuracy and reliability. Any interested party should undertake their own inquiries as to the accuracy of the information. Colliers International excludes unequivocally all inferred or implied terms, conditions and warranties arising out of this document and excludes all liability for loss and damages arising therefrom. This publication is the copyrighted property of Colliers International and/or its licensor(s). ©2025. All rights reserved.