



FOR LEASE

67 BIESECKER RD

221,933 SF
LEXINGTON, NC

STUMP

PROPERTY DETAILS

67 BIESECKER DR | LEXINGTON, NC

AVAILABLE SPACE	223,800 SF
MINIMUM DIVISIBLE	80,000 SF
DOCK DOORS	6
CLEAR HEIGHT	12'10", 13'6", 14'3"
BAY SPACING	38' X 23' 4", 40' X 32'
OFFICE SPACE	6,200 SF
YEAR BUILT	1973
YEAR RENOVATED	2019
POWER	7,500 AMP 600V
PARKING	180 Paved Spaces
LAND AREA	10.31 Acres
ROOF	BUR & membrane (50% new)
ZONING	Industrial
PARCEL ID	1100500000001B

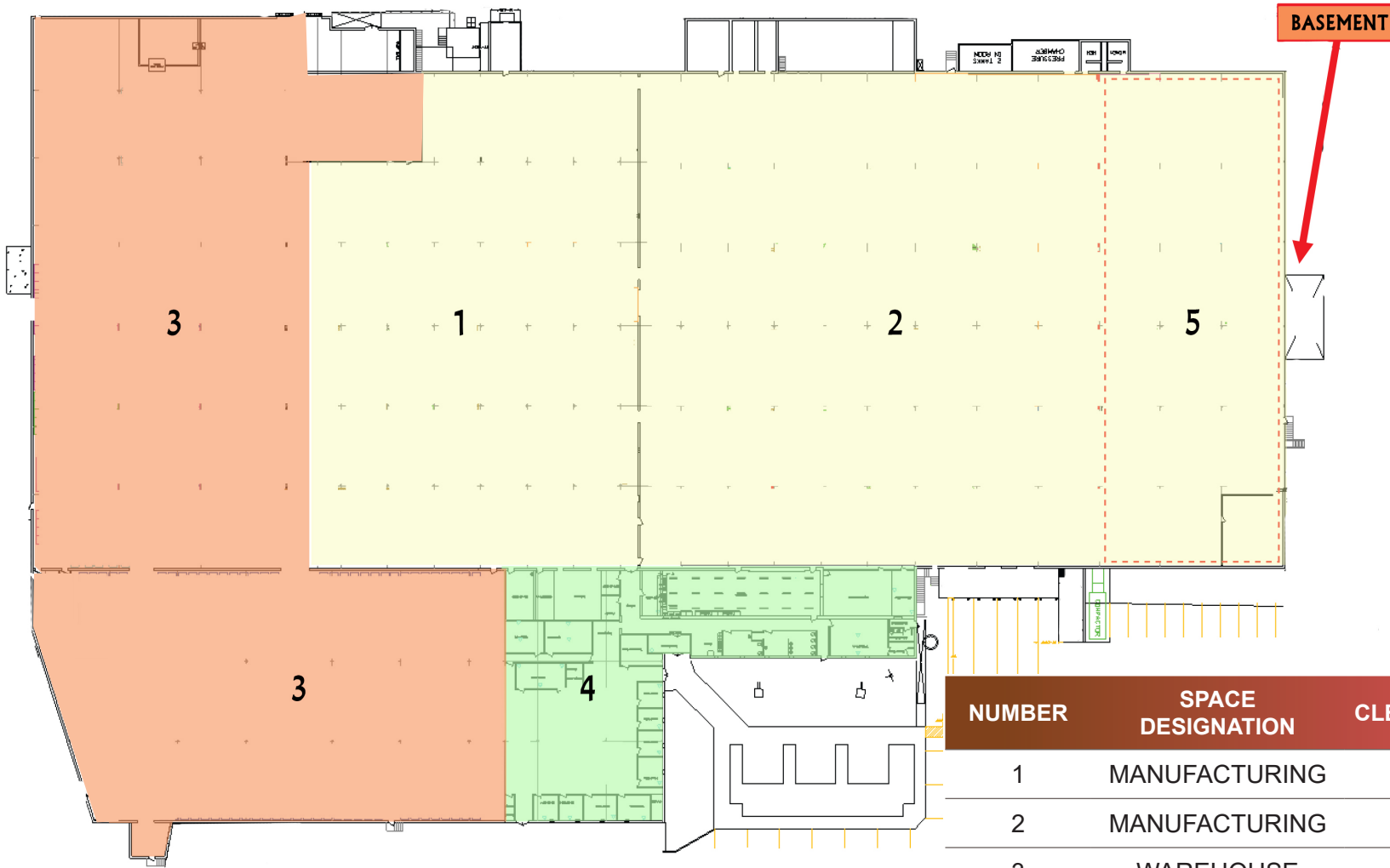
PROPERTY HIGHLIGHTS

- HEATING
- AMPLE LAYDOWN SPACE
- COOLED OFFICE SPACE
- DUST COLLECTOR SYSTEM



FLOOR PLAN

67 BIESECKER DR | LEXINGTON, NC

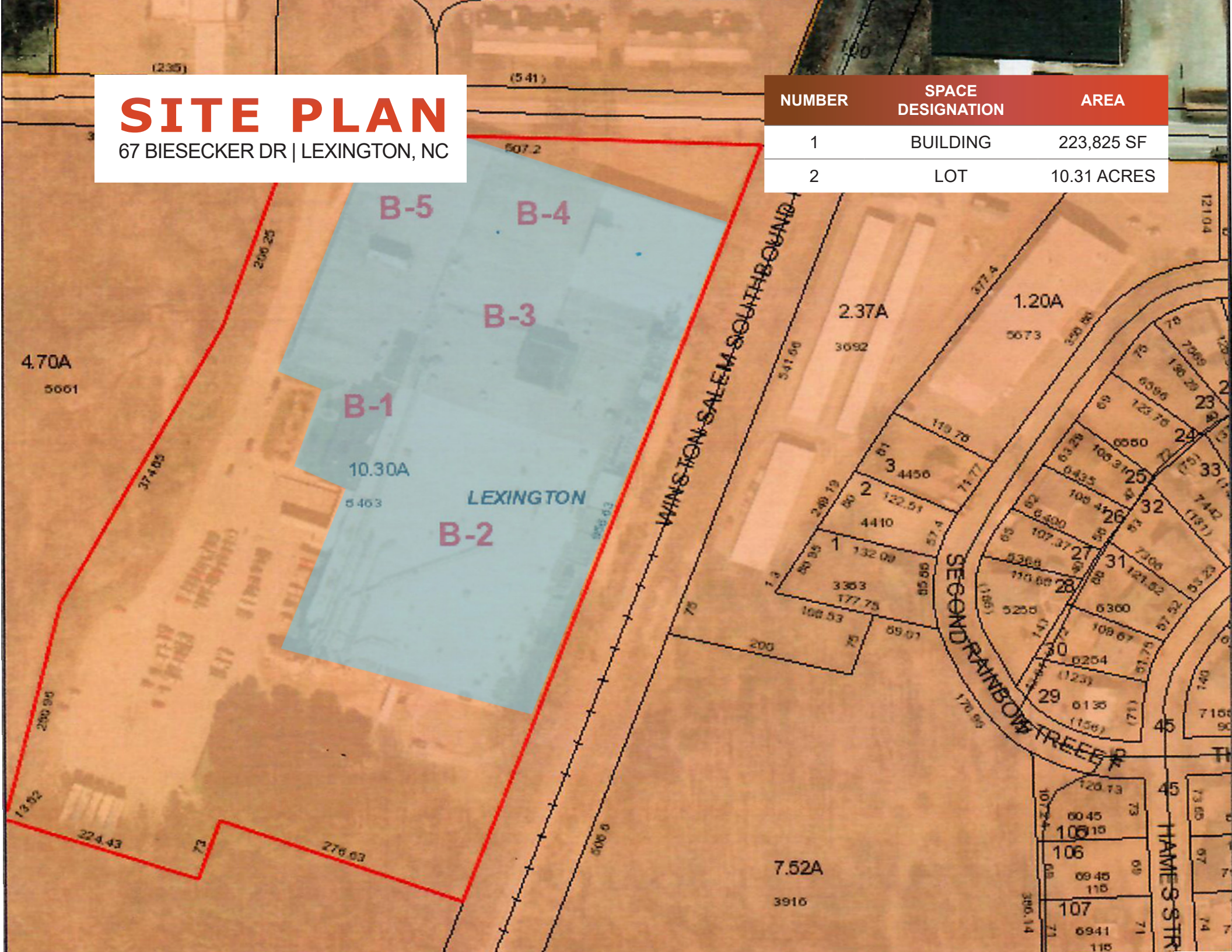


NUMBER	SPACE DESIGNATION	CLEAR HEIGHT	SQUARE FEET
1	MANUFACTURING	14'	33,925 SF
2	MANUFACTURING	14'	79,800 SF
3	WAREHOUSE	14'	80,000 SF
4	OFFICE	14'	6,600 SF
5	BASEMENT	12'	23,500 SF
TOTAL			223,825 SF

SITE PLAN

67 BIESECKER DR | LEXINGTON, NC

NUMBER	SPACE DESIGNATION	AREA
1	BUILDING	223,825 SF
2	LOT	10.31 ACRES



LOCATION MAP

67 BIESECKER DR | LEXINGTON, NC

I-85	4 MILES
WINSTON-SALEM, NC	23 MILES
GREENSBORO, NC	34 MILES
CHARLOTTE, NC	61 MILES
DURHAM, NC	87 MILES

