

STREET RETAIL DOWNTOWN BERKLEY

2860, 2870, 2880 Coolidge Highway / Berkley, MI 48072



MID-AMERICA[®]
Real Estate-Michigan, Inc.

FOR SALE OR LEASE
PRICE: \$1,142,000



RETAIL OPPORTUNITY

STREET RETAIL - DOWNTOWN BERKLEY



Address

2860, 2870, 2880 Coolidge Highway
Berkley, MI 48072

Availability

2860 & 2870: 1st Floor: 4,143 SF
2nd Floor: 1,376 SF

2880: 1,708 SF (month to month tenant)

Feature

- Prime opportunity to own or lease a retail property in the heart of downtown Berkley, located along Coolidge Highway at the corner of Wiltshire Road.
- The property offers private on-site parking.
- Positioned in a highly walkable area with a traffic-controlled intersection.
- Berkley attracts shoppers from nearby communities such as: Royal Oak, Ferndale, Huntington Woods, Birmingham, and Oak Park.
- Additionally, Berkley's municipal offices, public library, and public safety headquarters are nearby at the intersection of 12 Mile Road and Coolidge Highway.
- Zoning: Downtown District
- Parking requirement waived within 500' of municipal lot.

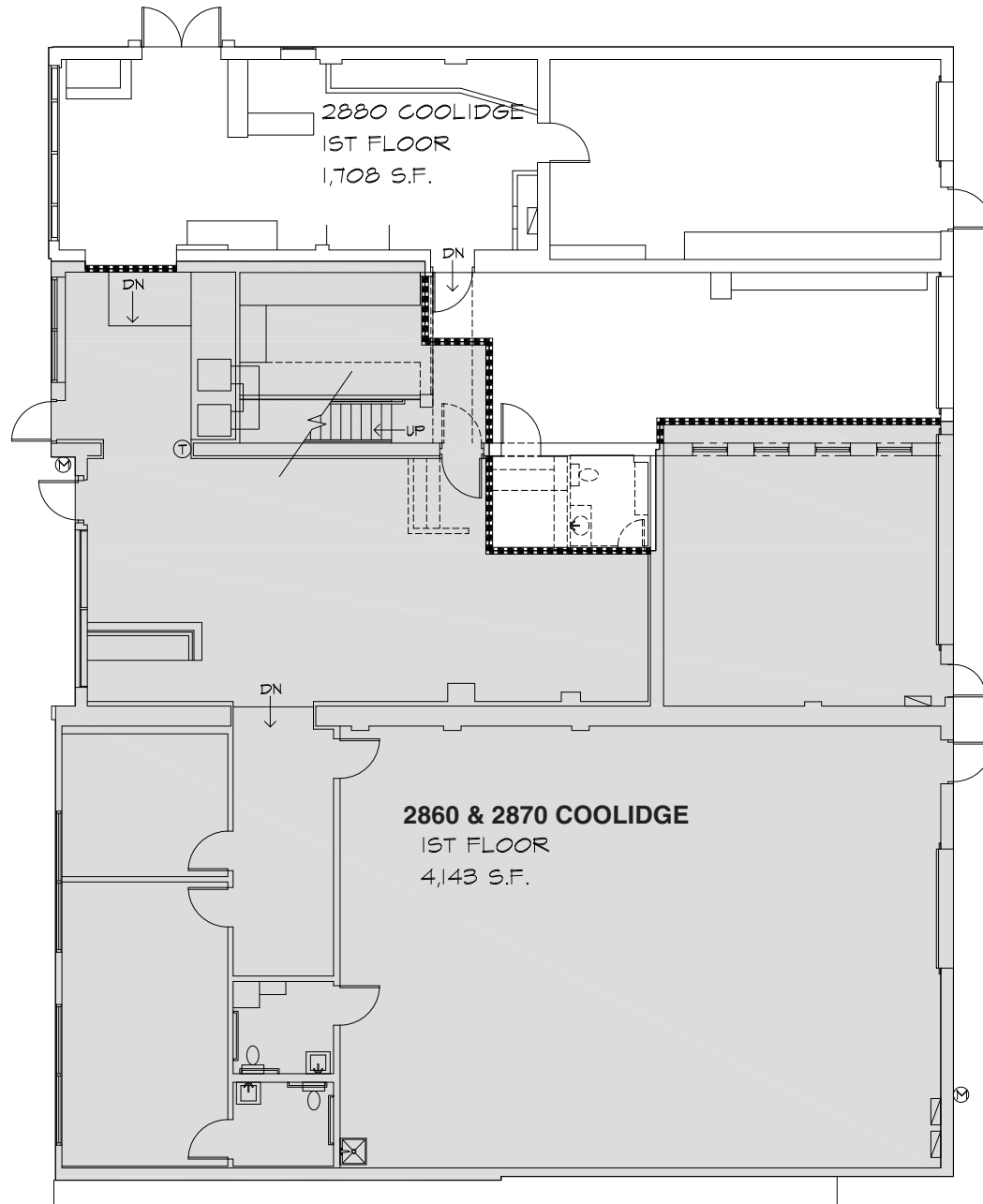
Area Tenants



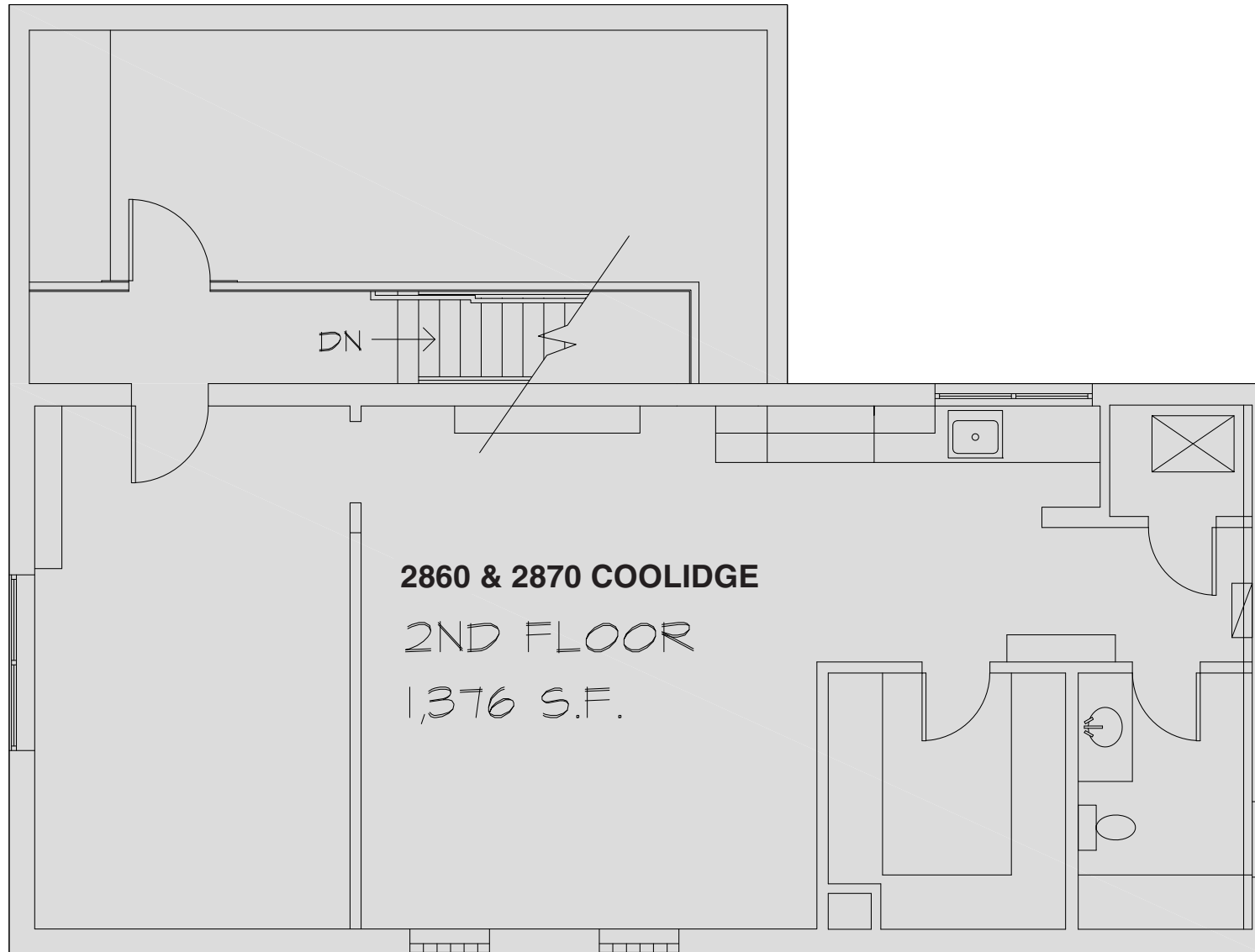
Demographics (2024)

	1 MILE	3 MILES	5 MILES
POPULATION	17,314	140,920	327,607
HOUSEHOLDS	7,765	65,746	150,220
AVG HOUSEHOLD INCOME	\$135,212	\$125,927	\$117,955
DAYTIME POPULATION	13,418	132,019	378,252

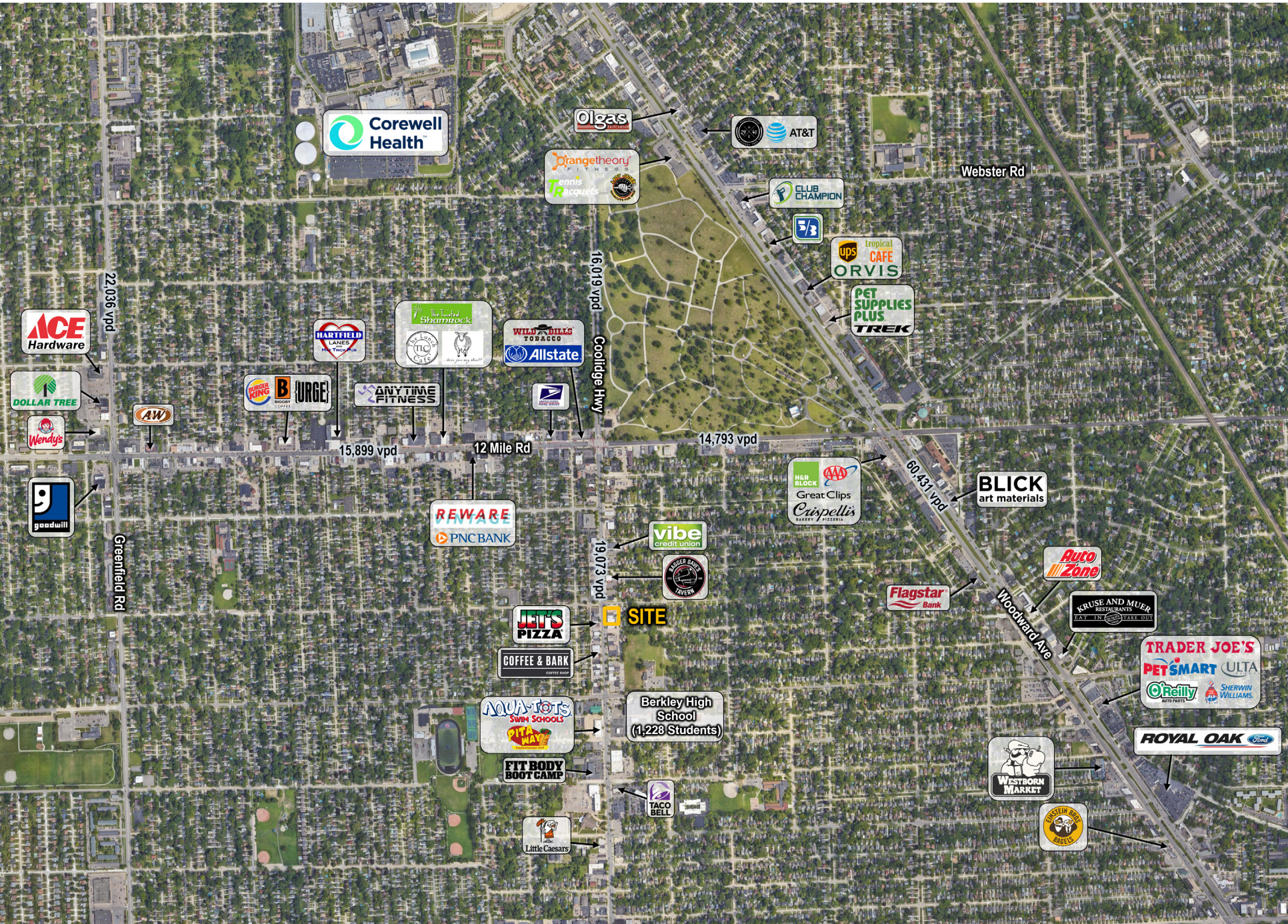
STREET RETAIL - DOWNTOWN BERKLEY



STREET RETAIL - DOWNTOWN BERKLEY



STREET RETAIL - DOWNTOWN BERKLEY



STREET RETAIL - DOWNTOWN BERKLEY



Lindsey
Shaw

Mid-America Real Estate -
Michigan, Inc.

T: 248.855.6800

LShaw@MidAmericaGrp.com

Brad
Lefkowitz

Mid-America Real Estate -
Michigan, Inc.

T: 248.855.6800

BLefkowitz@MidAmericaGrp.com



38500 Woodward Ave, Suite 100
Bloomfield Hills, Michigan 48304
248.855.6800

MidAmericaGrp.com