

# For Lease

**NAIDESCO**

**12814 Gravois Rd**  
St. Louis, MO 63128



## Property Highlights



**For Lease**  
**± 14,800 SF**



**Office / Warehouse**  
**Industrial Space**



**Easy Access to**  
**I-270 & Gravois Rd**



**Lease Rate:**  
**\$7.25 / SF, NNN**

For more information, please contact:



**Meghan Donovan**

d (314) 994 - 2320  
c (314) 810 - 9213  
mdonovan@naidesco.com



**Michelle Goodwin, CCIM**

d (314) 994 - 4944  
c (636) 236 - 9802  
mgoodwin@naidesco.com

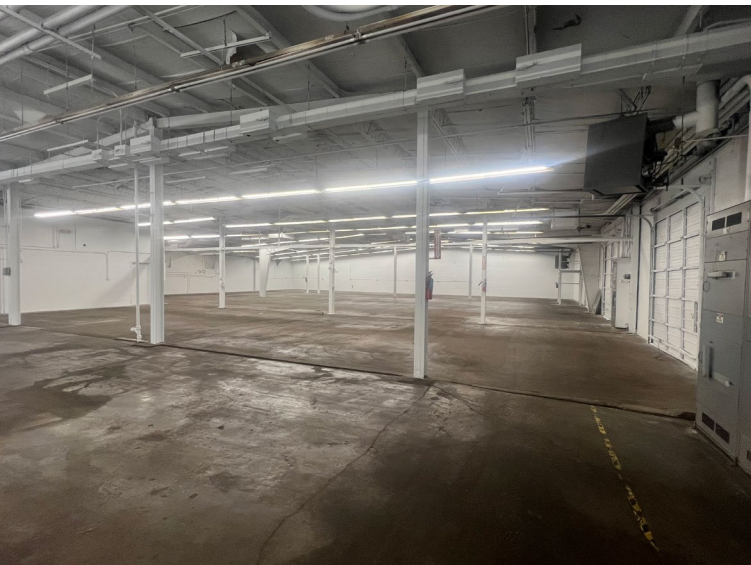
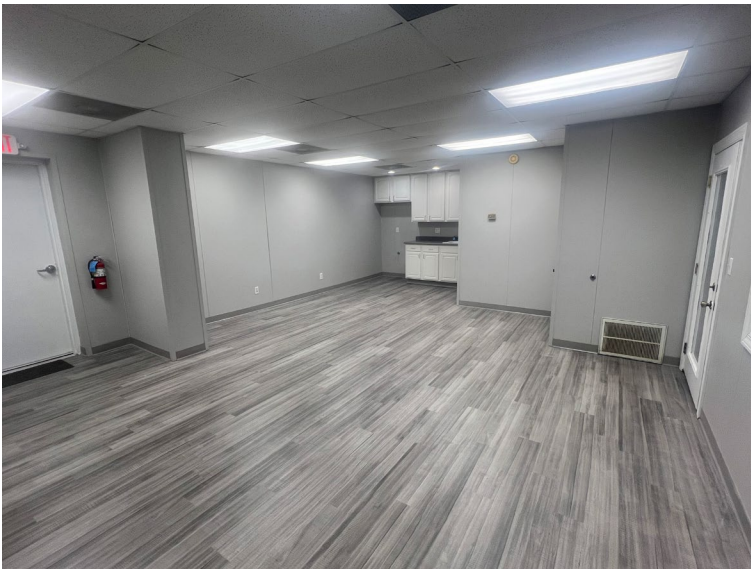
**NAIDESCO**

8112 Maryland Ave, Suite 300  
St. Louis, MO 63105  
(314) 994 - 4800  
[naidesco.com](http://naidesco.com)

## Property Features

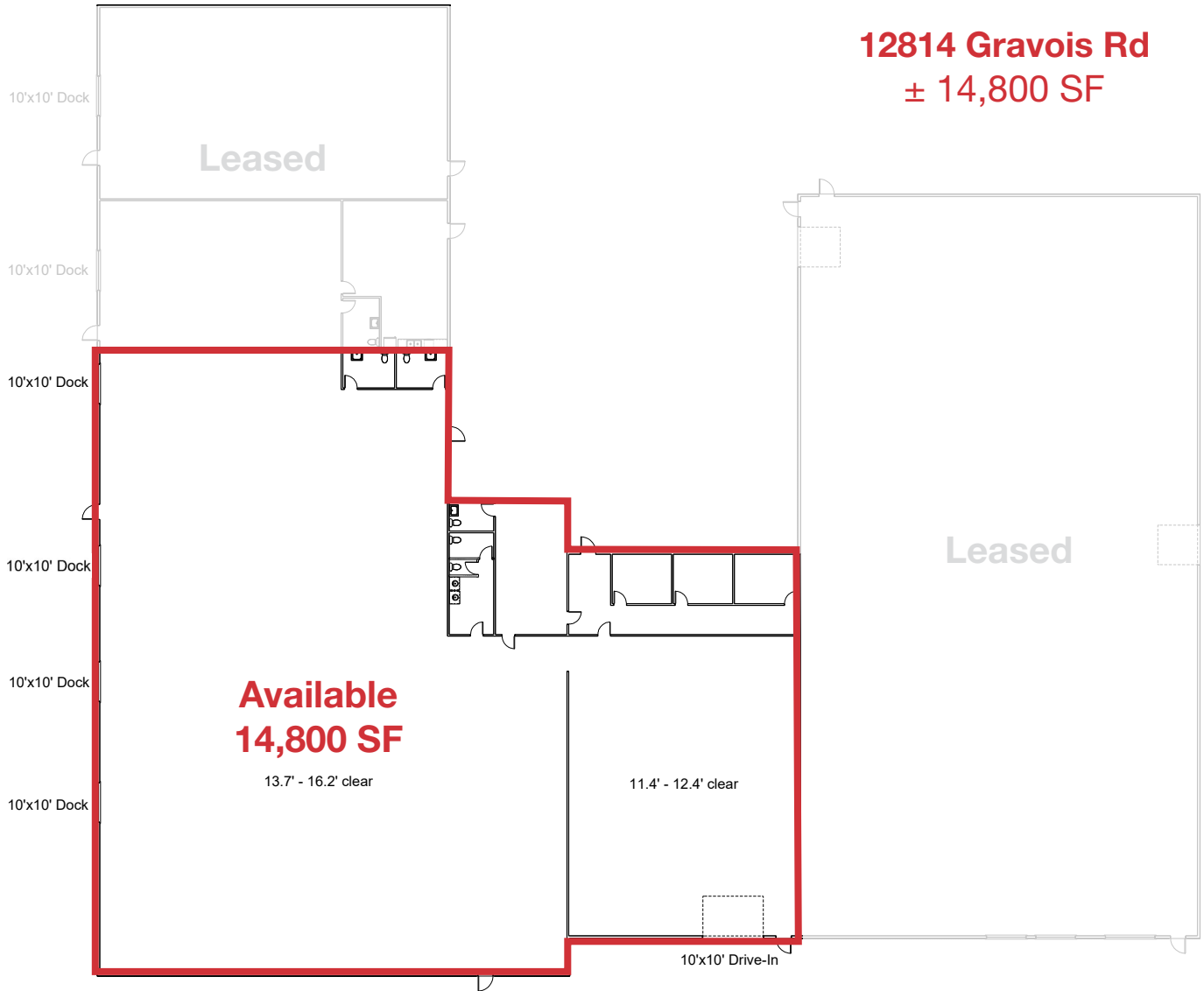
- 14,800 SF newly renovated industrial space for lease
- ±2,000 SF office finish
- Four 10'x10' dock doors, One 10'x10' drive in
- 1200 AMP 3 phase power
- 11'5"-16'3" clear height
- New LED lighting throughout warehouse
- Ample parking available
- Parking lot improvements completed Fall 2025
- Easy access to I-270 and Gravois Rd

 **Lease Rate: \$7.25 / SF, NNN**

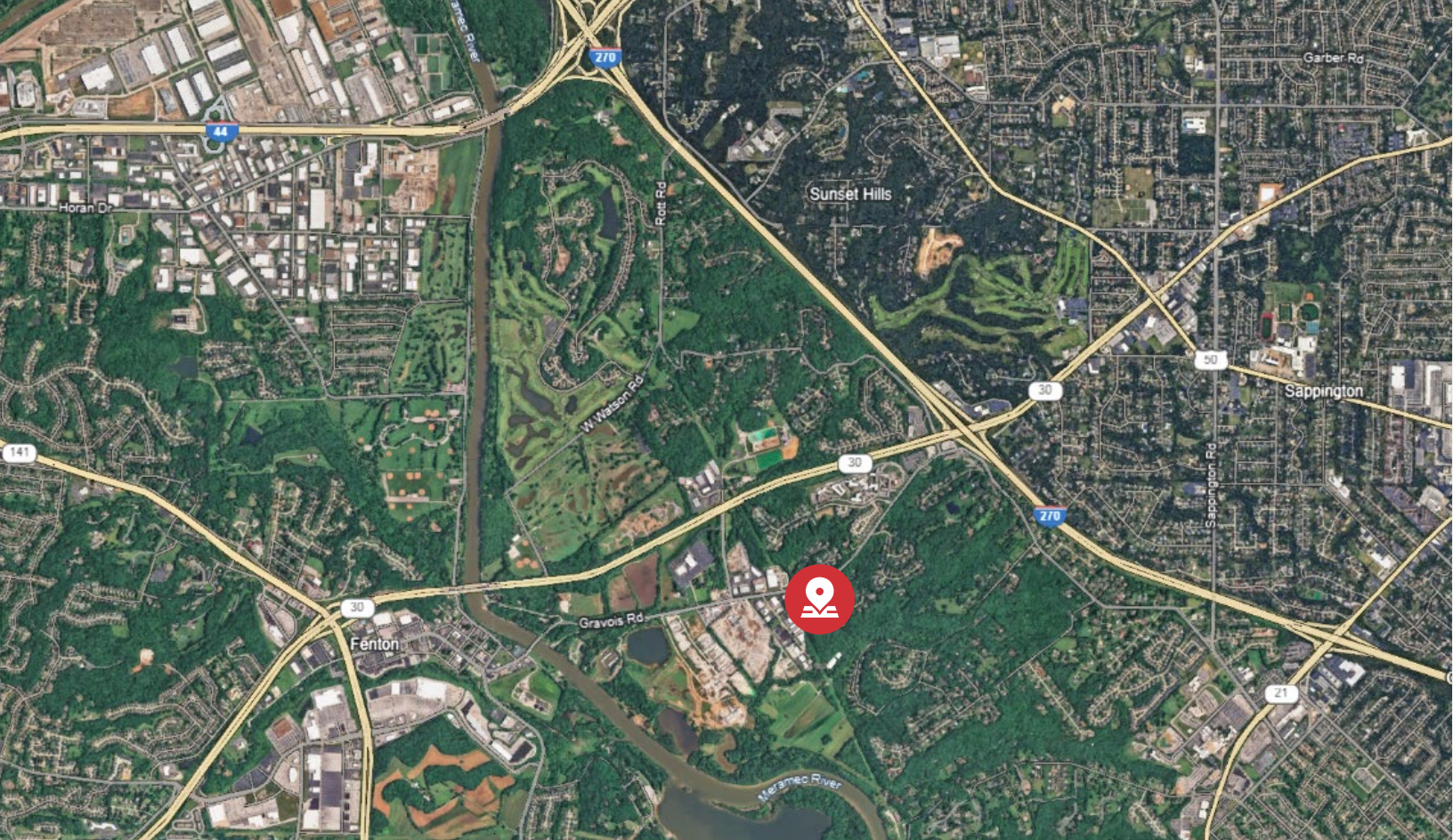


# Floor Plan

**12814 Gravois Rd**  
**± 14,800 SF**



**\*Loading area newly paved Fall 2025**



**Meghan Donovan**

d (314) 994 - 2320  
c (314) 810 - 9213  
mdonovan@naidesco.com



**Michelle Goodwin, CCIM**

d (314) 994 - 4944  
c (636) 236 - 9802  
mgoodwin@naidesco.com



**NAIDESCO**

8112 Maryland Ave, Suite 300  
St. Louis, MO 63105  
(314) 994 - 4800  
[naidesco.com](http://naidesco.com)