
PrestonBend

REAL ESTATE

FOR SALE

200 South Ridgeway Drive, Cleburne Texas



OVERVIEW

- Total Building Size: 5,540 SF
- Lot Size: 0.482 AC
- Sale Price: \$875,000
- Zoning: Commercial
- Ample parking

PROPERTY DETAILS

Preston Bend Real Estate is proud to exclusively present for sale a fully leased retail center located in Cleburne, Texas. This investment opportunity provides stable, passive income with minimal landlord obligations. The property is 100% occupied, featuring staggered lease expirations that support long-term income stability. Please contact the Broker for additional details.



prestonbendre.com

Randy Jay,
Principal Broker
972.413.0375
randy@prestonbendre.com

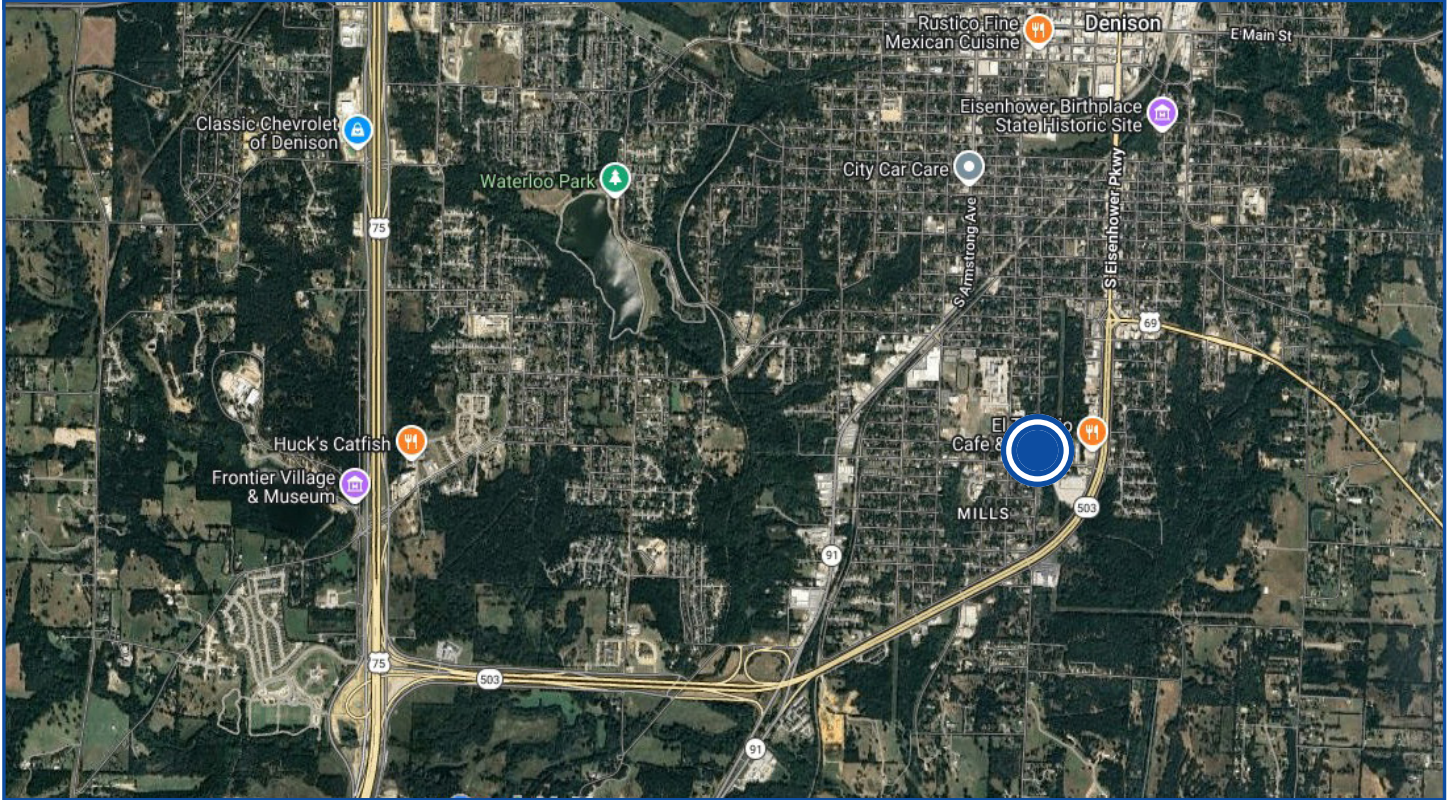
Ashley Lail,
Broker Associate
817.240.3775
ashley@prestonbendre.com

PrestonBend

REAL ESTATE

SITE AERIAL

200 South Ridgeway Drive, Cleburne Texas



THE INFORMATION CONTAINED HEREIN HAS BEEN GIVEN TO US BY THE OWNER OF THE PROPERTY OR OTHER SOURCES WE DEEM RELIABLE. WE HAVE NO REASON TO DOUBT ITS ACCURACY, BUT WE DO NOT GUARANTEE IT. ALL INFORMATION SHOULD BE VERIFIED PRIOR TO PURCHASE OR LEASE.



prestonbendre.com

Randy Jay,
Principal Broker
972.413.0375
randy@prestonbendre.com

Ashley Lail,
Broker Associate
817.240.3775
ashley@prestonbendre.com