

## SUITE 174 – W | 938 SF

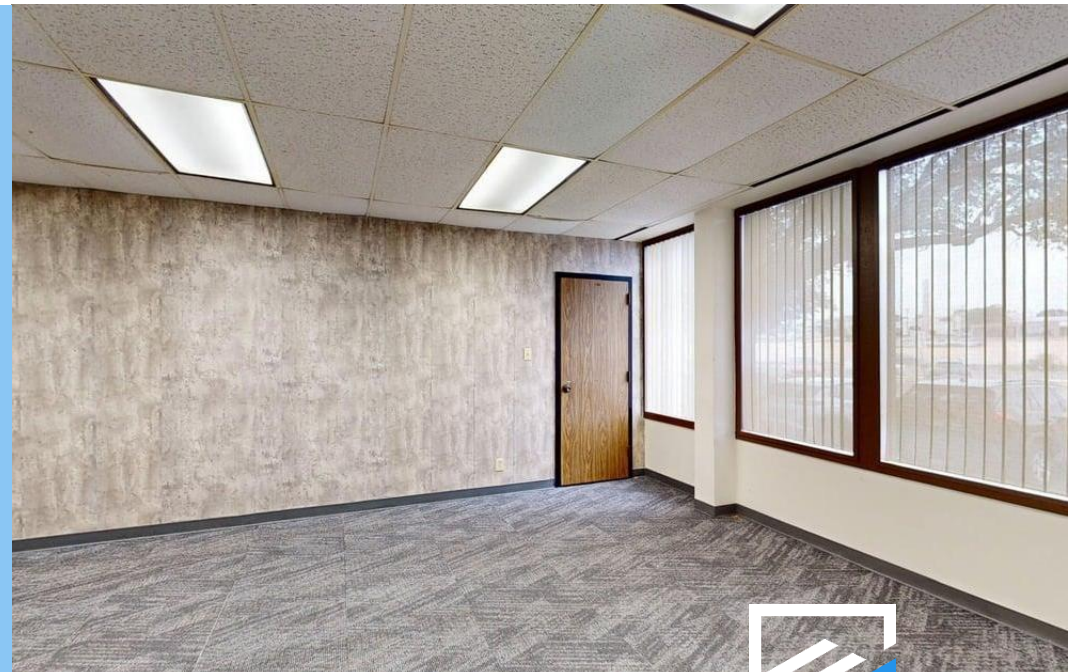
Suite 174 West at 6800 Park Ten Blvd offers 938 sq. ft. of versatile office space in the heart of San Antonio's established business corridor. This single-story suite features a functional five-room layout ideal for professional, administrative, or creative office users seeking a move-in-ready workspace. Neutral finishes, patterned gray carpet tile flooring, suspended acoustic ceilings, and recessed fluorescent lighting create a clean, professional atmosphere throughout.

Multiple private offices provide flexibility for individual workspaces, meetings, or collaborative use. Distinctive accent walls, including charcoal and concrete-style finishes, add modern character and visual appeal.

One exterior-facing office features large windows with vertical blinds, bringing natural light into the suite and creating an inviting work environment. The efficient floor plan supports a variety of business operations and office configurations.

### SPACE HIGHLIGHTS

- 938 SF Office Suite
- Five Private Rooms
- Move-In Ready Space
- Modern Accent Finishes
- Windowed Office Space
- Flexible Office Layout



## SUITE 174 – W | 938 SF



