



LAKESIDE AT **QUARRY OAKS**

4516 SETON CENTER PKWY, AUSTIN, TX

Brought to you by *Brick Row*

FEATURES & AMENITIES

BUILDING SIZE

123,275 SF

TYPICAL FLOOR PLATE

42,000 SF

SPACE AVAILABLE

1,700 - 32,000 SF

CONTIGUOUS

12,000 SF

- 3 story, 123,275 SF office building with lake front views
- Access to Quarry Lake (Private Lake) available for swimming, paddle boarding, and 1 mile fitness trail
- Over 50 restaurants, 5 hotels, 4,000 multi-family units and 2 million square feet of retail between the Arboretum and the Domain
- Surface & subterranean parking (4.2/1,000 ratio)
- Less than one mile from the Domain with direct access via Braker Lane

Lakeside at Quarry Oaks | 4516 Seton Center Pkwy, Austin, TX

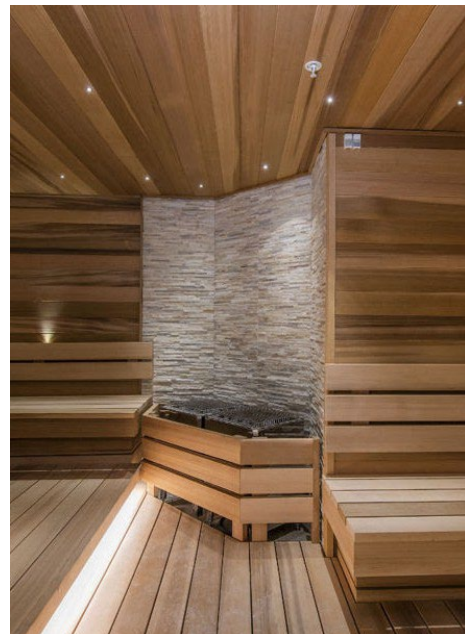
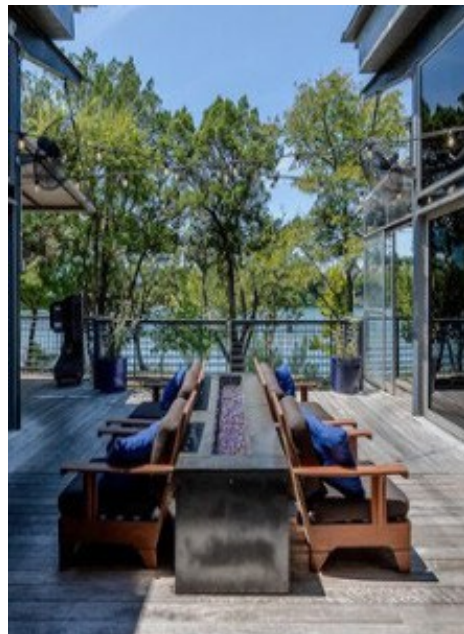


NEIGHBORHOOD OVERVIEW



NEAR BY AMENITIES

LIFETIME FITNESS, ROARING FORK, QUARRY LAKE
AND QUARRY LAKE 1 MILE TRAIL LOOP

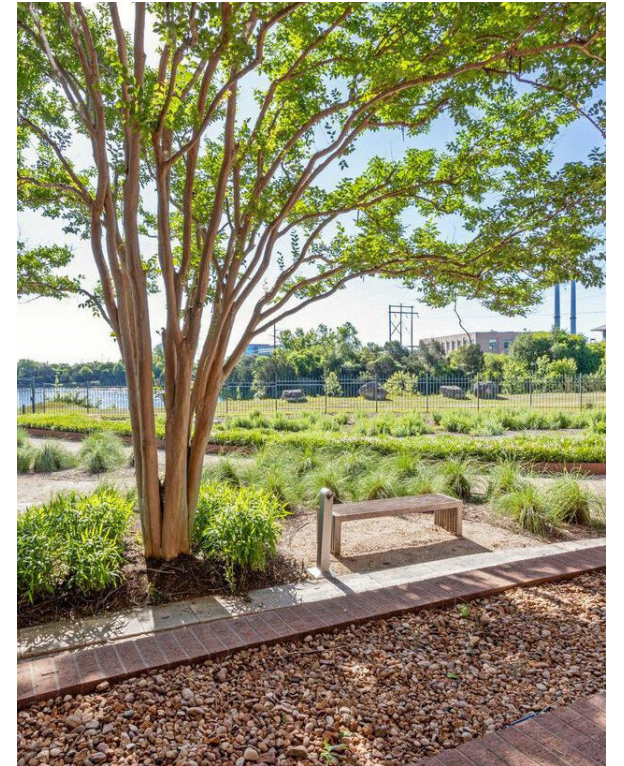


PROPERTY AERIAL



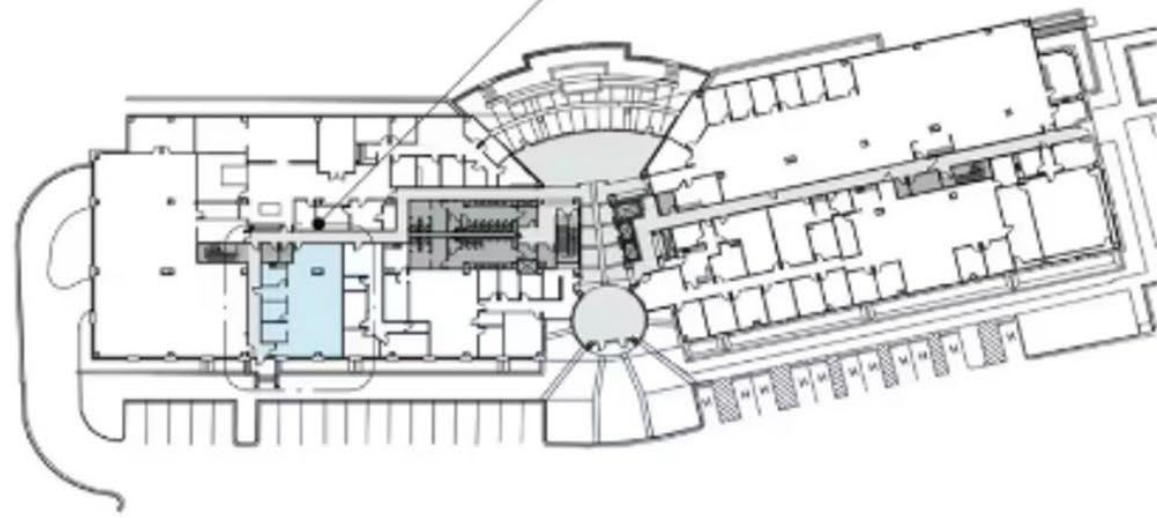
PROPERTY PHOTOS

EXTERIOR, ENTRY & LOBBIES

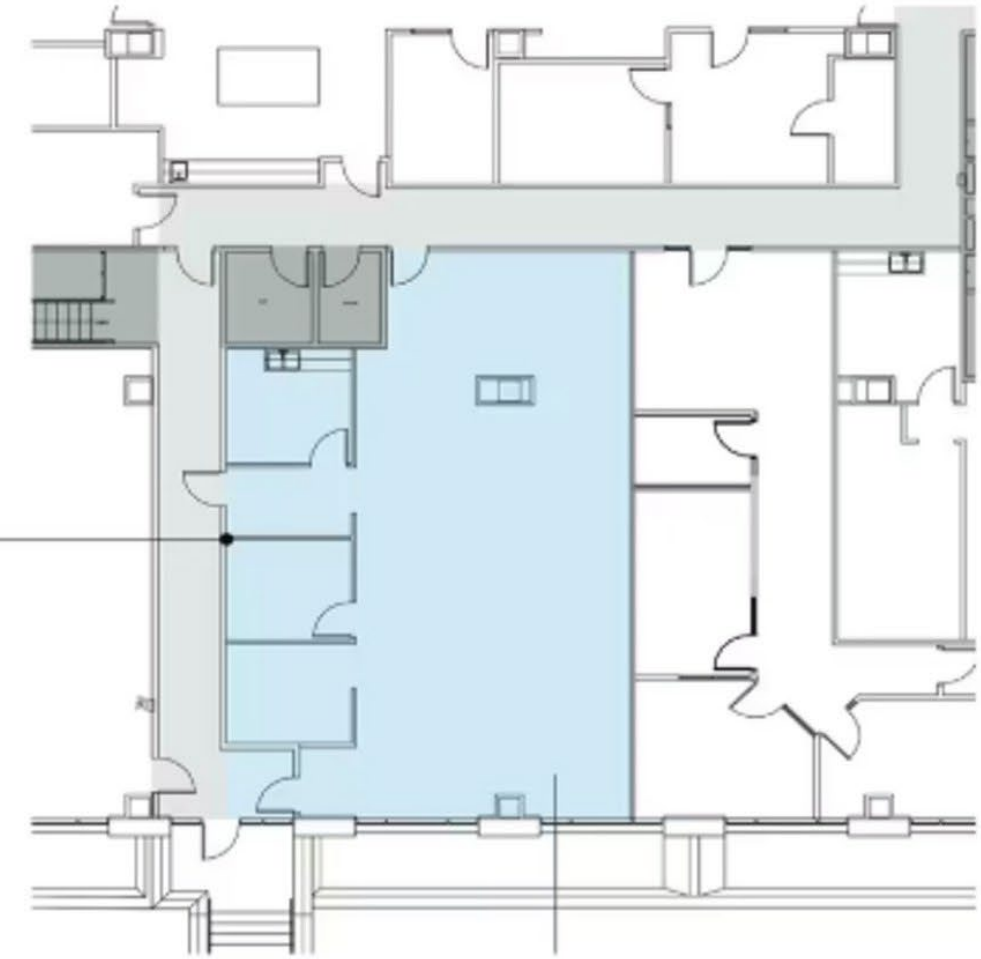


1st Floor Availability

SUITE 120 | 1,758 RSF

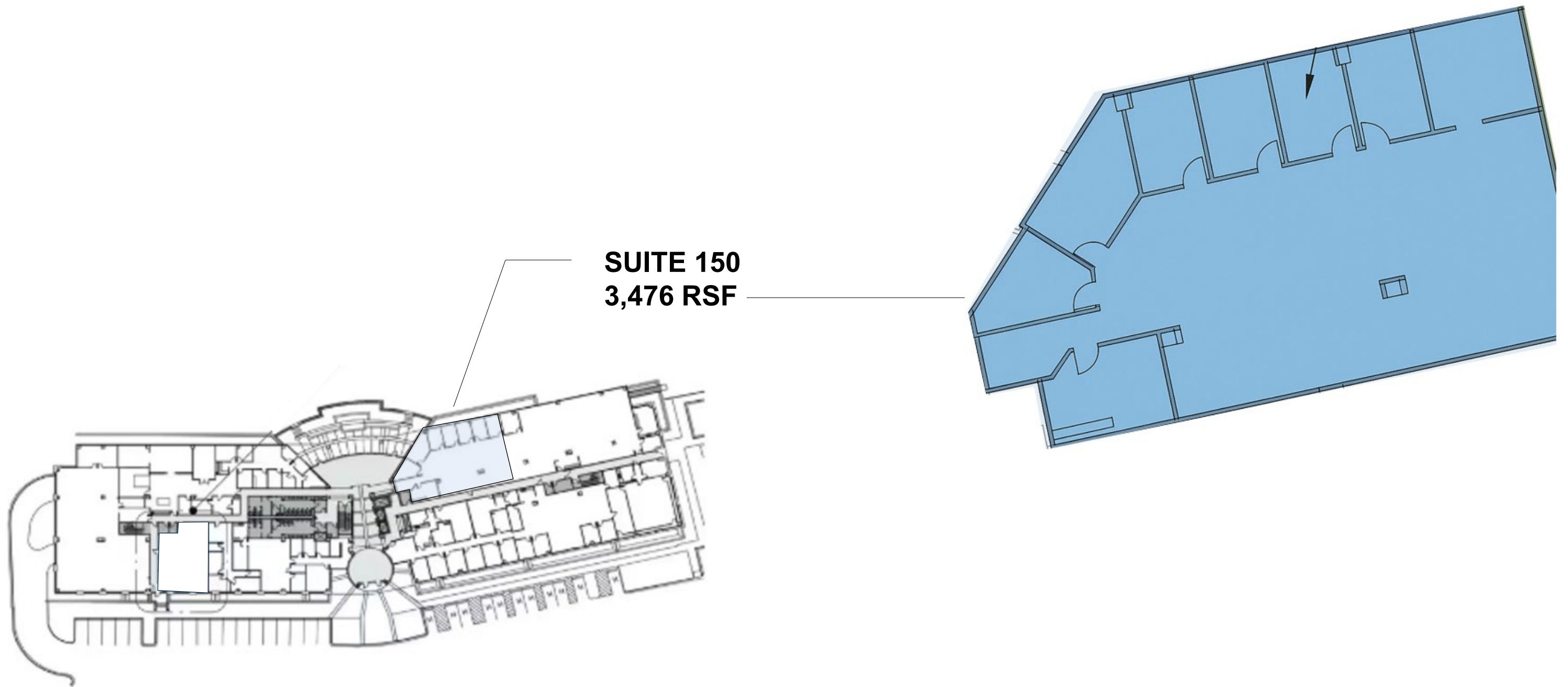


SUITE 120
1,758 RSF



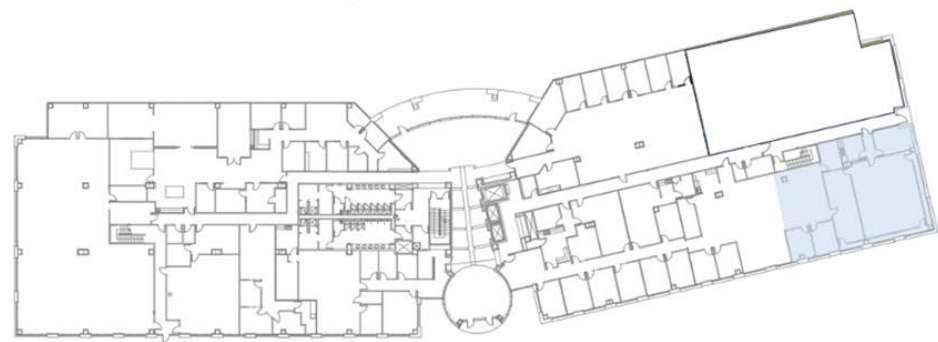
1st Floor Availability

SUITE 150 | 3,476 RSF

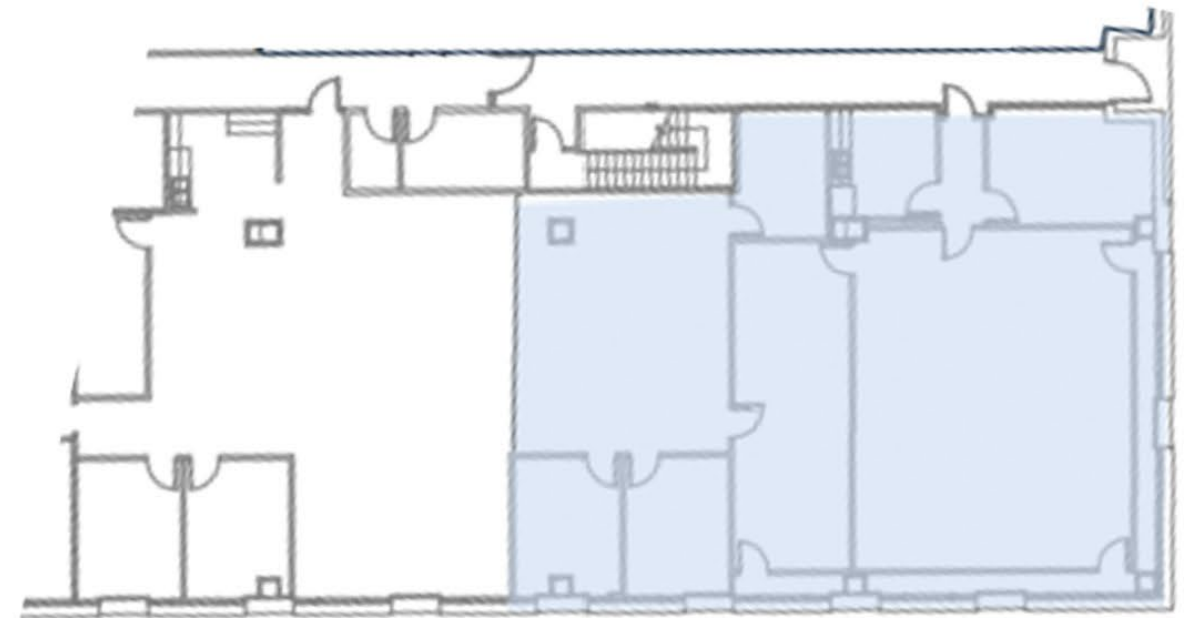


1st Floor Availability

SUITE 160 | 3,928 RSF

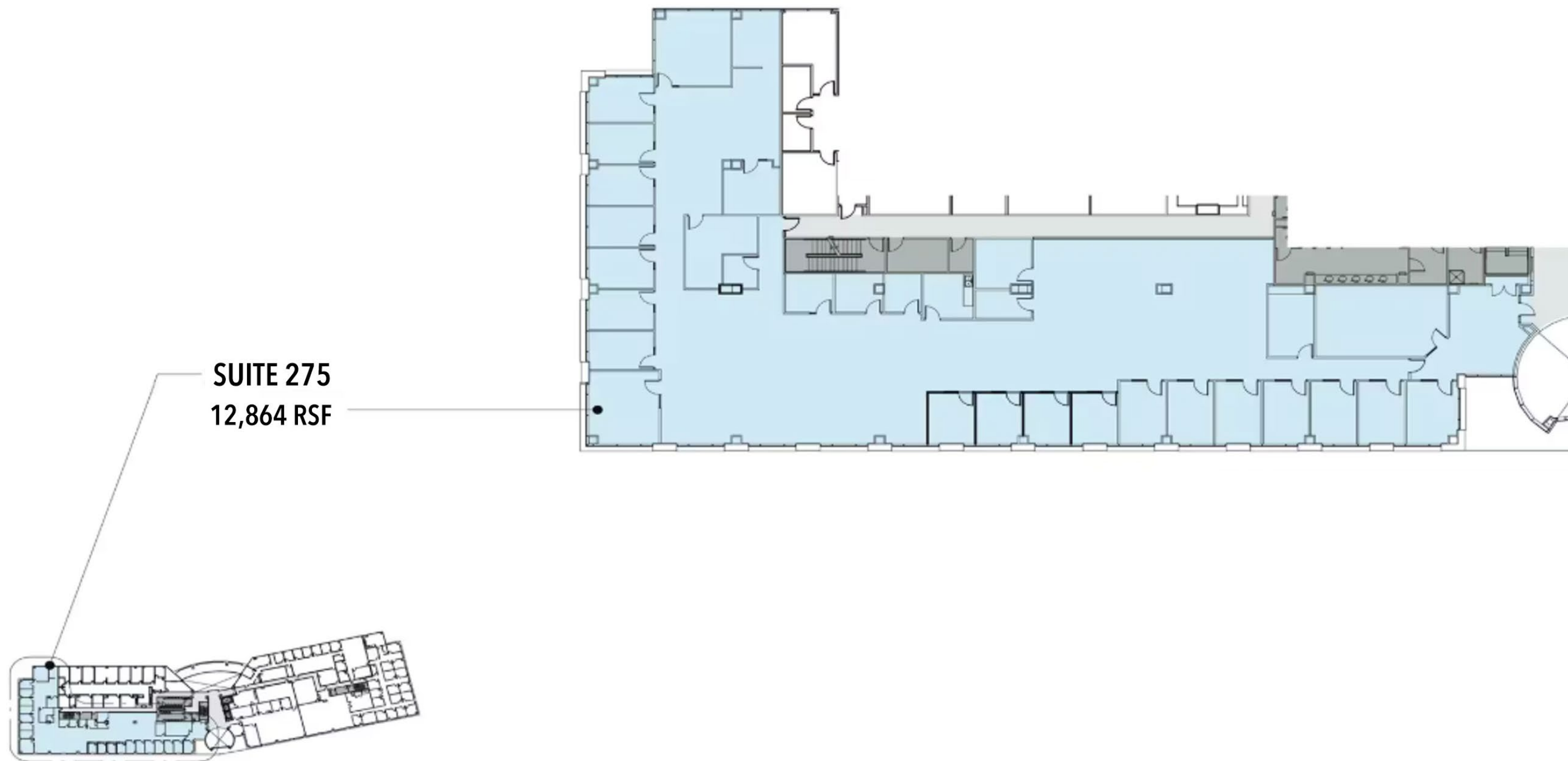


SUITE 160
3,928 RSF



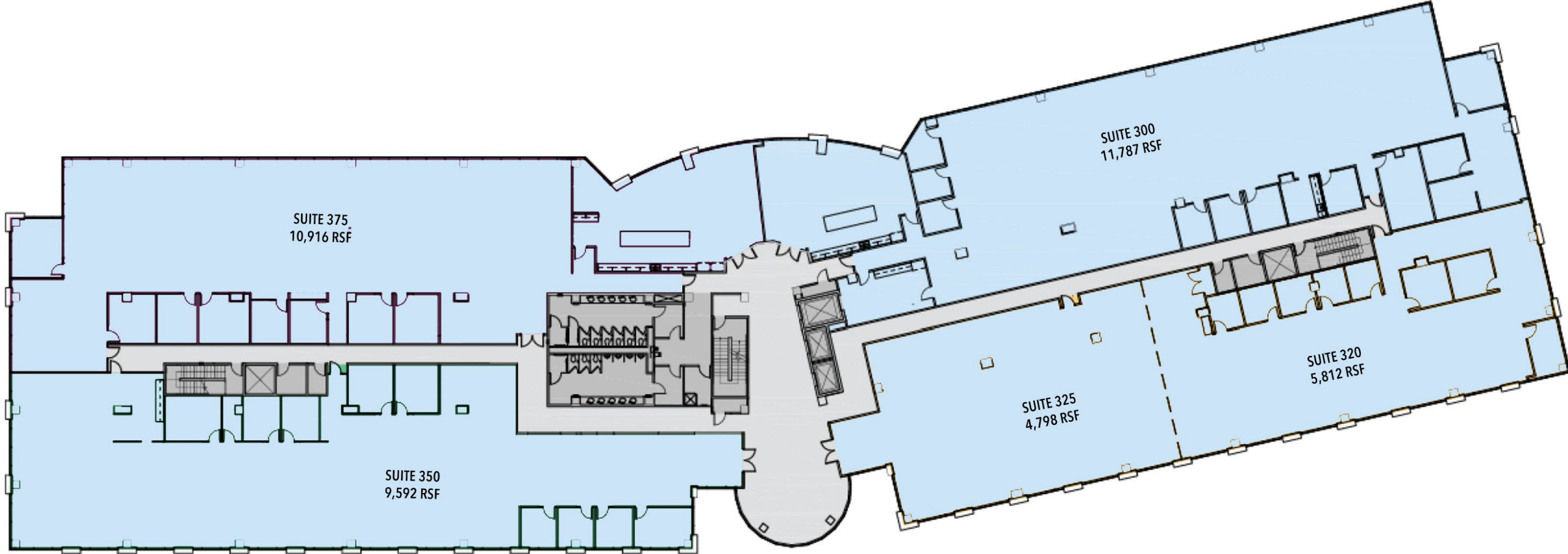
2nd Floor Availability

SUITE 275 | 12,864 RSF



3rd Floor Availability

MULTI-TENANT | 42,000 SF



AERIAL





For information please contact

CONNOR GREISSING

Managing Principal - *Brick Row*

330.554.8530

connor@brick-row.com

BLAKE NEITZKE

Vice President - *Brick Row*

386.341.0735

blake@brick-row.com

