

Land ★ SALE

OLD AIRPORT RD & HWY 171, WEATHERFORD, TX 76087

Land

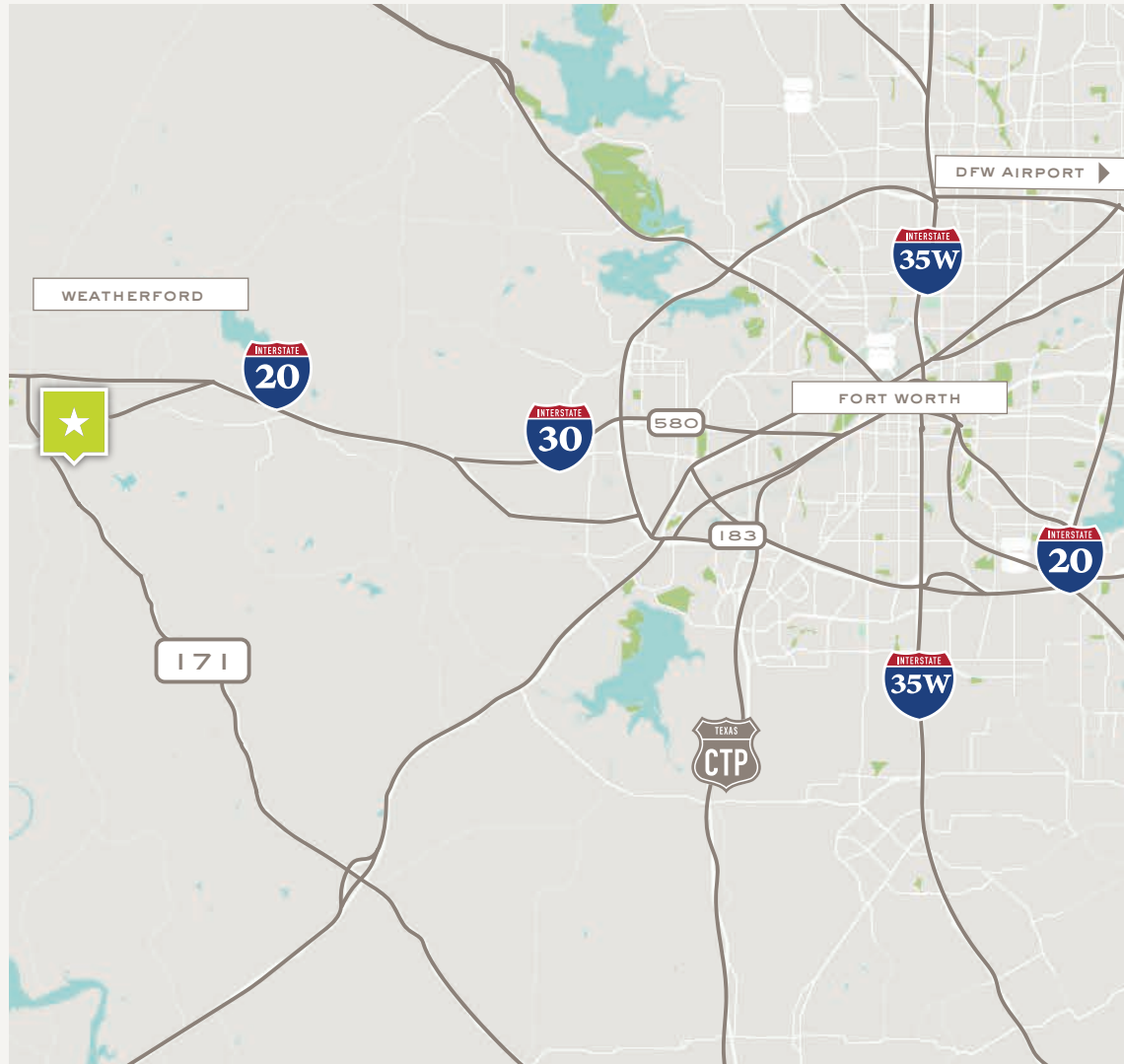
RETAIL, INDUSTRIAL, AND FLEX OPPORTUNITIES



Land ★ SALE

OLD AIRPORT RD & HWY 171

LanCarte.com



PROPERTY FEATURES

- Retail, Industrial & Flex Opportunities
- Build-to-suit Opportunity
- Located in Parker County ETJ (minimal restrictions)
- High-visibility corridor along SH 171
- Less than a mile to Interstate 20
- Prime Frontage with increasing traffic count
- Surrounded by expanding residential growth

LOCATION OVERVIEW

The Weatherford 171 Industrial Development is located at the southeast corner of SH 171 and Old Airport Road in Weatherford, TX, just off I-20 for easy access to Fort Worth and the DFW Metroplex. Situated in the ETJ, the site benefits from future growth potential, regional connectivity and very few zoning restrictions/regulations.

SALE PRICE

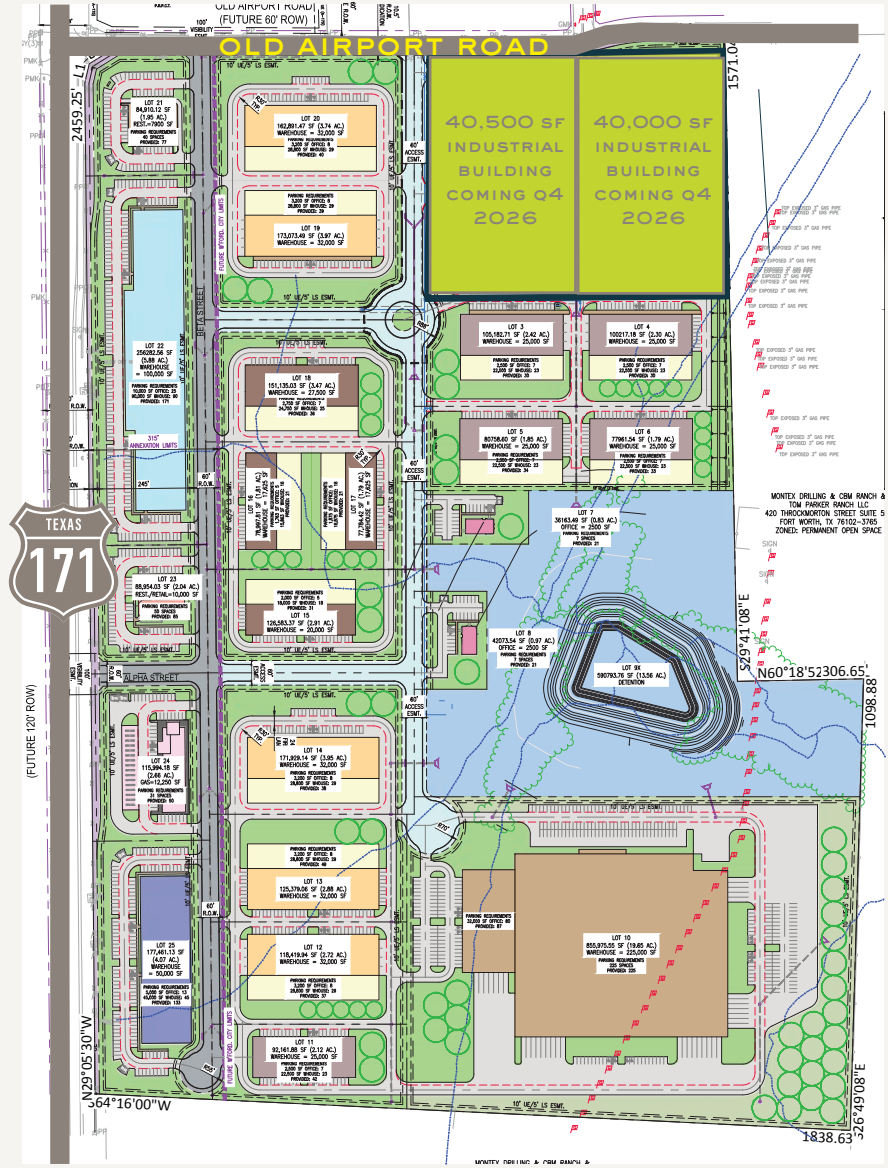
Contact Broker

Land ★ SALE

OLD AIRPORT RD & HWY 171

LanCarte.com

SITE PLAN



Land ★ SALE

OLD AIRPORT RD & HWY 171

LanCarte.com

NEARBY RETAILERS



Land ★ SALE

OLD AIRPORT RD & HWY 171

LanCarte.com

LOOKING NORTH - LESS THAN ONE MILE FROM I-20





LANCARTE COMMERCIAL

BROKERAGE ★ PROPERTY MANAGEMENT

Relentlessly Pursuing What Matters

Mark Boone

817-715-4732 | mboone@lancarte.com

The information provided herein was obtained from sources believed to be reliable. However, LanCarte Commercial makes no guaranties, warranties or representations as to the completeness or accuracy thereof. The presentation of this property is submitted subject to errors, omissions, change of price or conditions, prior to sale or lease, or withdrawal without notice. Copyright 2026 LanCarte Commercial Real Estate, LLC.