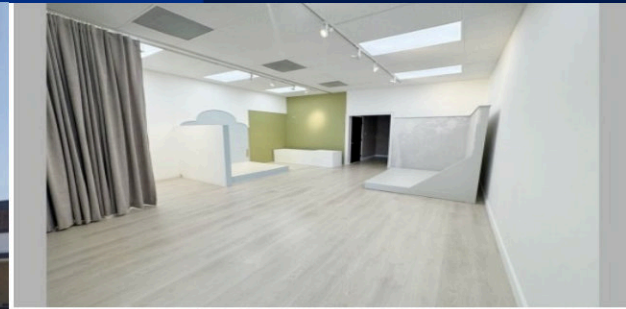


244 S OXFORD AVE

Los Angeles, CA 90004 · Koreatown



660K+

Residents within 5 mi

45K+

Daily Vehicles

2

Units Available

34

Parking Stalls

AVAILABLE UNITS

UNIT 20

SIZE: 1,500 SF
 FLOOR: 2nd Floor
 USE: Retail

Private Bath | 2 Storage Rms

\$4,000 / mo
Gross Lease

UNIT 3

SIZE: 650 SF
 FLOOR: Ground Floor
 USE: Retail / Service

Private Bath | Ground Floor

Call for Pricing
Contact Agent

PROPERTY HIGHLIGHTS

PRIME LOCATION

Well-located on Oxford Ave in an established retail center, one block from Western Ave with ample parking.

HIGH TRAFFIC

45,000+ vehicles daily on Western Ave & 2nd Street, ensuring maximum visibility for your business.

DENSE MARKET

660,000+ residents within 5 miles in one of LA's most vibrant, densely populated neighborhoods.

ON-SITE SECURITY

Security guard on property providing peace of mind for tenants and customers alike.

NEIGHBORHOOD HIGHLIGHTS

THE WILTERN

ENTERTAINMENT

Iconic Art Deco music venue & LA landmark drawing thousands of visitors weekly.

ANTICO VINAIO

DINING

Florence's legendary sandwich shop — one of the world's most visited restaurants.

LAPABA

DINING

Trendy new Korean-Italian fusion destination drawing foodies citywide to the heart of koreatown.

CALIFORNIA MARKET

GROCERY

One of LA's top asian supermarkets for every day groceries to authentic Korean pantry essentials.

KOREATOWN PLAZA

SHOP

Major retail & dining hub anchoring the neighborhood's commercial corridor.

METRO D LINE

TRAVEL

Wilshire/Western station — excellent transit connectivity across the city.

CONTACT AGENT

Alice Oh

(213) 925-6069

aoh@cbwilshire.com

BRE 02129043

LOCATION

244 S Oxford Ave
 Los Angeles, CA 90004
 1 block from Western Ave
 Near 2nd Street

