

Elm Ridge Office Park

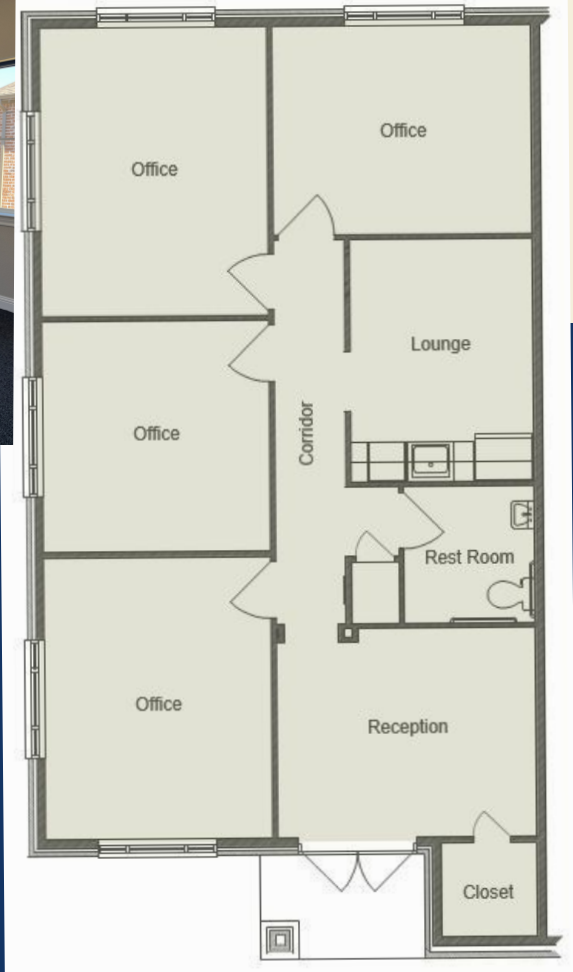
2601 Little Elm Parkway Unit 1504, Little Elm, TX 75068

NOW LEASING UNIT 1504

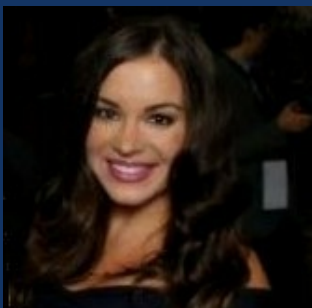


SHB Development

COMMERCIAL REAL ESTATE DEVELOPMENT • SALES • LEASING



Lease your own office space at Little Elm's newest office park! Elm Ridge Office Park is centrally located on Little Elm Pkwy between FM423 and E El Dorado Pkwy, next to Kroger and Hat Creek Burger. This office condominium is 1,228 square feet. It is fully built out with a reception area, four offices, kitchen, and restroom. Perfect for any professional service business. These are moving very quickly! Contact Samantha today for current rates and availability.



Samantha Rollins
Sales Manager

Office: 214-973-9111

Email: samantha@shb-inc.com

Website: www.shbdevelopment.com