

FOR SALE

1666 VILLAGE GREEN, CROFTON, MD 21114



Boutique Office For Sale

Laurie Murphy-Zuiderhof
443.756.5102
Laurie@hyattcommercial.com

John Kauffman
443.584.4496
jkauffman@hyattcommercial.com

HIGHLIGHTS

- Boutique office condo for sale in Crofton, MD
- +/-800 SF split between first floor and lower level
- Ample storage space and communal outdoor space
- Nearby amenities include Crofton Country Club, Waugh Chapel and Crofton Center
- Lower level not ADA accessible
- Perfect for an attorney, administrative office or counseling

OFFERING

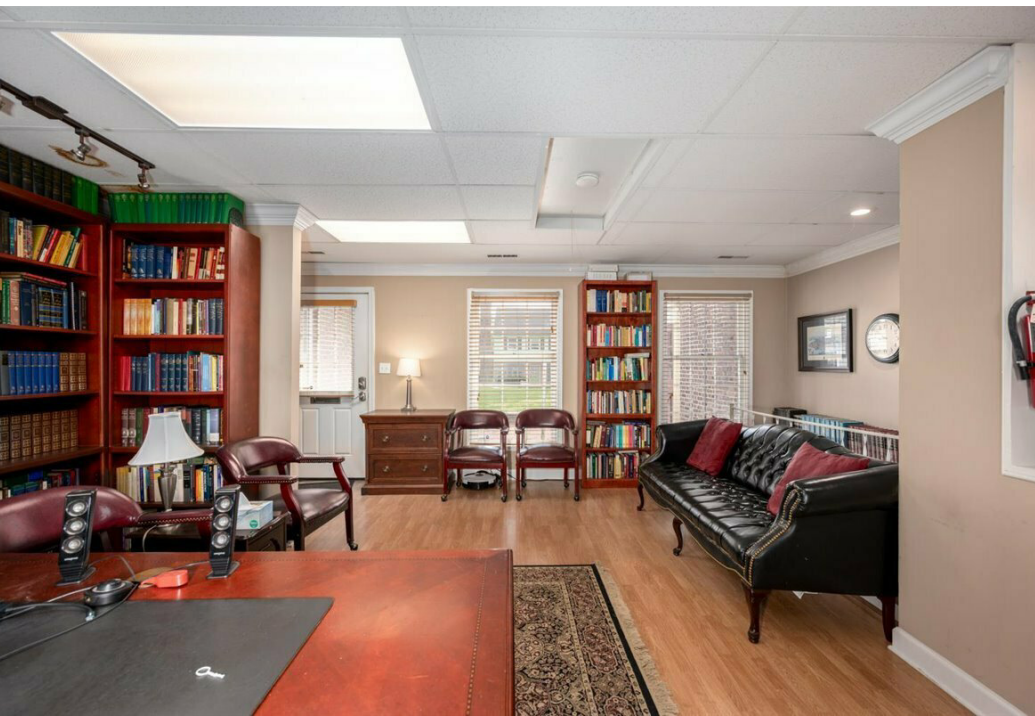


FOR SALE OFFICE SPACE

Building Size	± 800 SF
Price	Call for more info
Zoning	C1
No. of Floors	2



ADDITIONAL PHOTOS



RETAILER MAP



Crofton Station

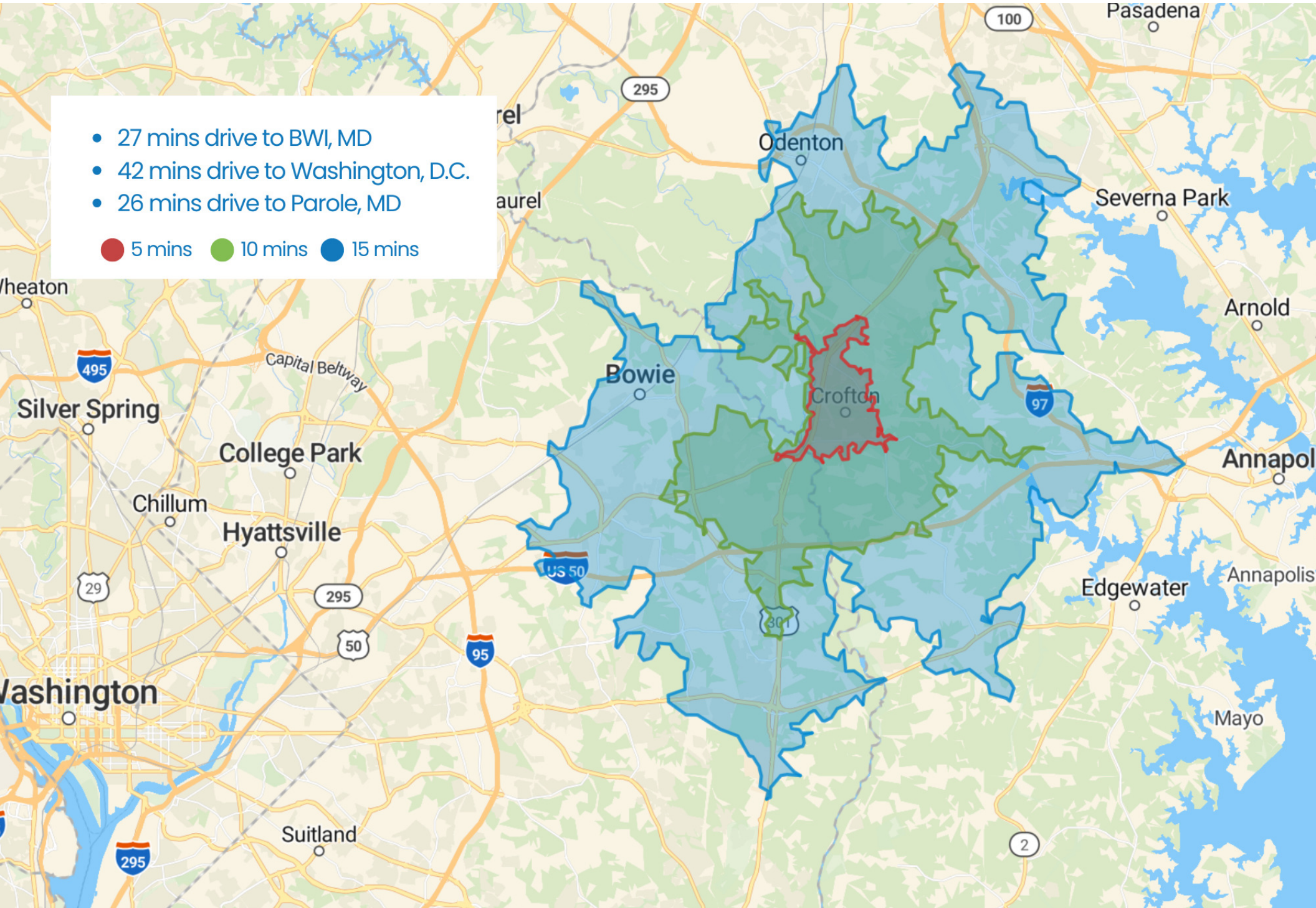
The Nautilus
Diner Restaurant Of Crofton

Crofton Center

1666 Village Green

DRIVETIME MAP





- 27 mins drive to BWI, MD
 - 42 mins drive to Washington, D.C.
 - 26 mins drive to Parole, MD
- 5 mins ● 10 mins ● 15 mins



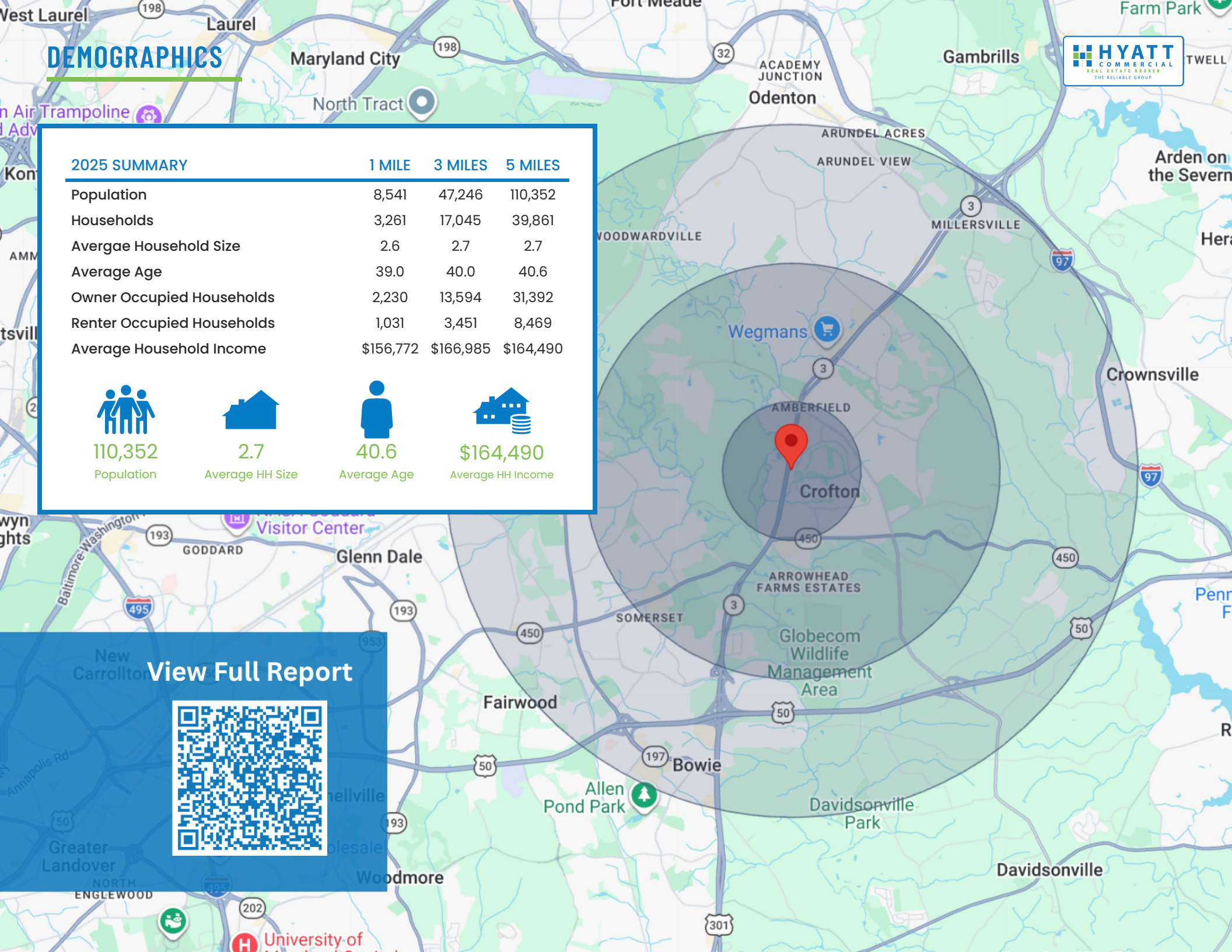
DEMOGRAPHICS



2025 SUMMARY	1 MILE	3 MILES	5 MILES
Population	8,541	47,246	110,352
Households	3,261	17,045	39,861
Average Household Size	2.6	2.7	2.7
Average Age	39.0	40.0	40.6
Owner Occupied Households	2,230	13,594	31,392
Renter Occupied Households	1,031	3,451	8,469
Average Household Income	\$156,772	\$166,985	\$164,490

 110,352 Population	 2.7 Average HH Size	 40.6 Average Age	 \$164,490 Average HH Income
---	--	---	--

[View Full Report](#)





CONTACT

HYATT COMMERCIAL

410.266.8800

2568A Riva Rd, Suite 300, Annapolis, MD 21401

Laurie Murphy-Zuiderhof

443.756.5102

Laurie@hyattcommercial.com

John Kauffman

443.584.4496

jkauffman@hyattcommercial.com

While we have no reason to doubt the accuracy of any of the information supplied, we cannot, and do not, guarantee its accuracy. All information should be independently verified prior to a purchase or lease of the property. We are not responsible for errors, omissions, misuse, or misinterpretation contained herein and make no warranty of any kind, express or implied, with respect to the property or any other matters. The property is subject to price change or withdrawal without notice.