

37676 - 37696 ENTERPRISE  
UNIT #37690  
FARMINGTON HILLS, MICHIGAN

HI-TECH FOR LEASE  
15,607 Square Feet Available



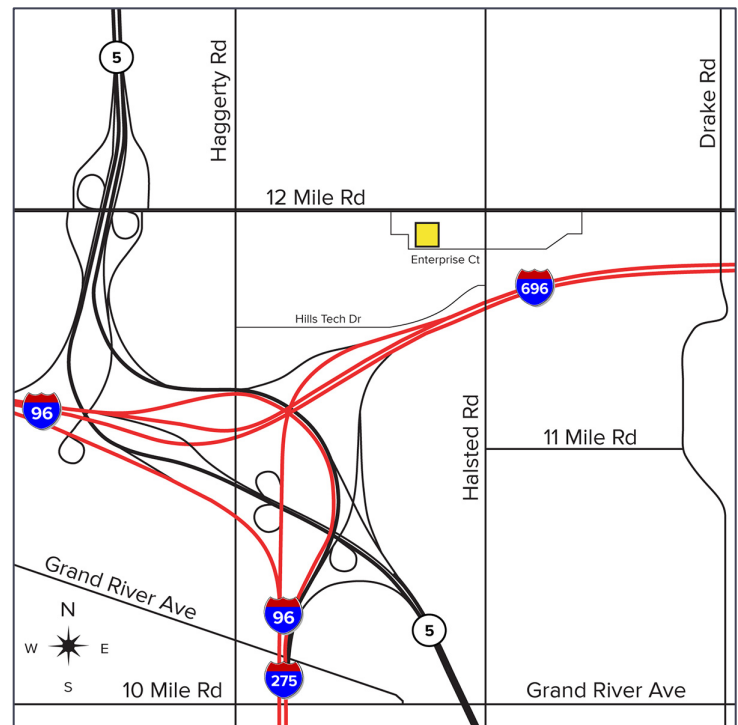
**SIGNATURE  
ASSOCIATES**  
KNOW SIGNATURE | KNOW RESULTS

## ENTERPRISE CORPORATE CENTRE



### PROPERTY FEATURES

- 15,607 square feet available
- 5,530 square feet office
- 19' clear height
- (2) grade level doors, (1) truckwell
- Attractive space in Enterprise Corporate Centre
- Great hi-tech facility with close freeway proximity
- Extensive amount of parking
- Available Q4 2026
- Lease Rate: \$10.95/sq. ft. NNN



For more information, please contact:

**DAVE GREEN**  
(248) 948 4184  
dgreen@signatureassociates.com

**JOE PLASKEY**  
(248) 948 0110  
jplaskey@signatureassociates.com

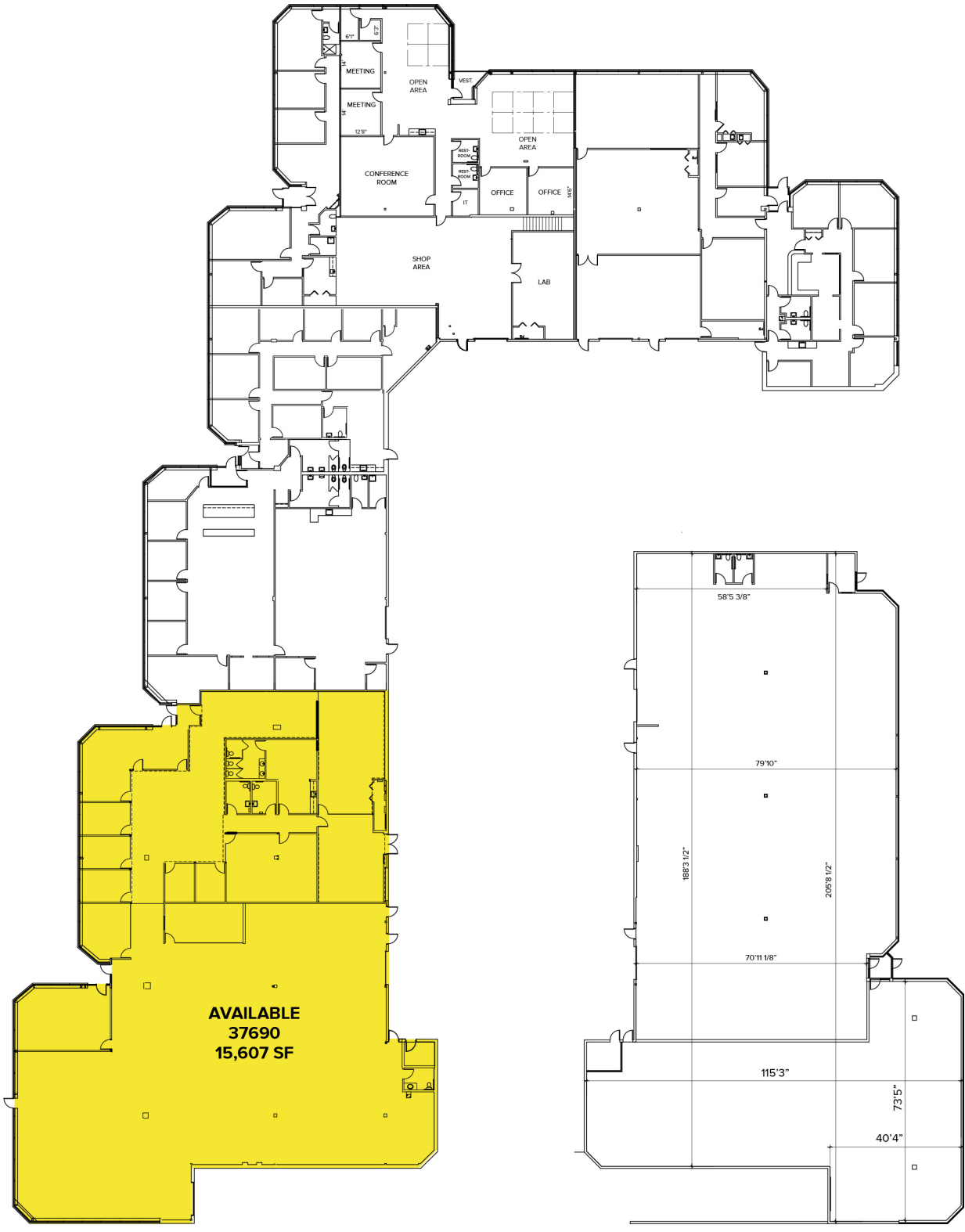
**SIGNATURE ASSOCIATES**  
One Towne Square, Suite 1200  
Southfield, MI 48076  
www.signatureassociates.com

# 37676-37696 Enterprise – Farmington Hills, Michigan

## Hi-Tech For Lease

15,607  
Square Feet  
AVAILABLE

### Site Plan



For more information, please contact:

**DAVE GREEN**  
(248) 948 4184  
dgreen@signatureassociates.com

**JOE PLASKEY**  
(248) 948 0110  
jplaskey@signatureassociates.com

**SIGNATURE ASSOCIATES**  
One Towne Square, Suite 1200  
Southfield, MI 48076  
www.signatureassociates.com

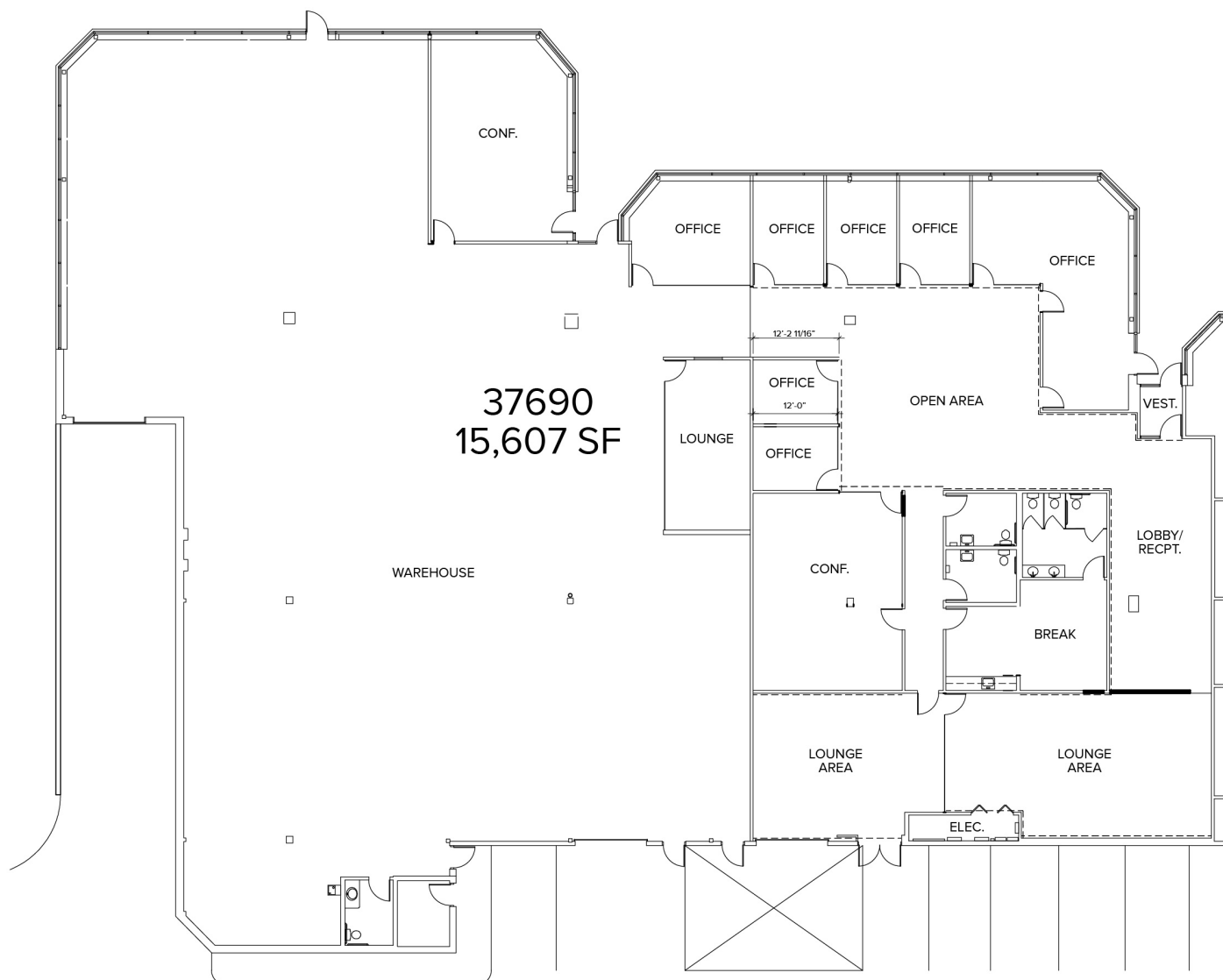
Information is subject to verification and no liability for errors or omissions is assumed. Price is subject to change and listing withdrawal.

# 37676-37696 Enterprise – Farmington Hills, Michigan

## Hi-Tech For Lease

15,607  
Square Feet  
AVAILABLE

### Floor Plan Suite 37690



For more information, please contact:

**DAVE GREEN**  
(248) 948 4184  
dgreen@signatureassociates.com

**JOE PLASKEY**  
(248) 948 0110  
jplaskey@signatureassociates.com

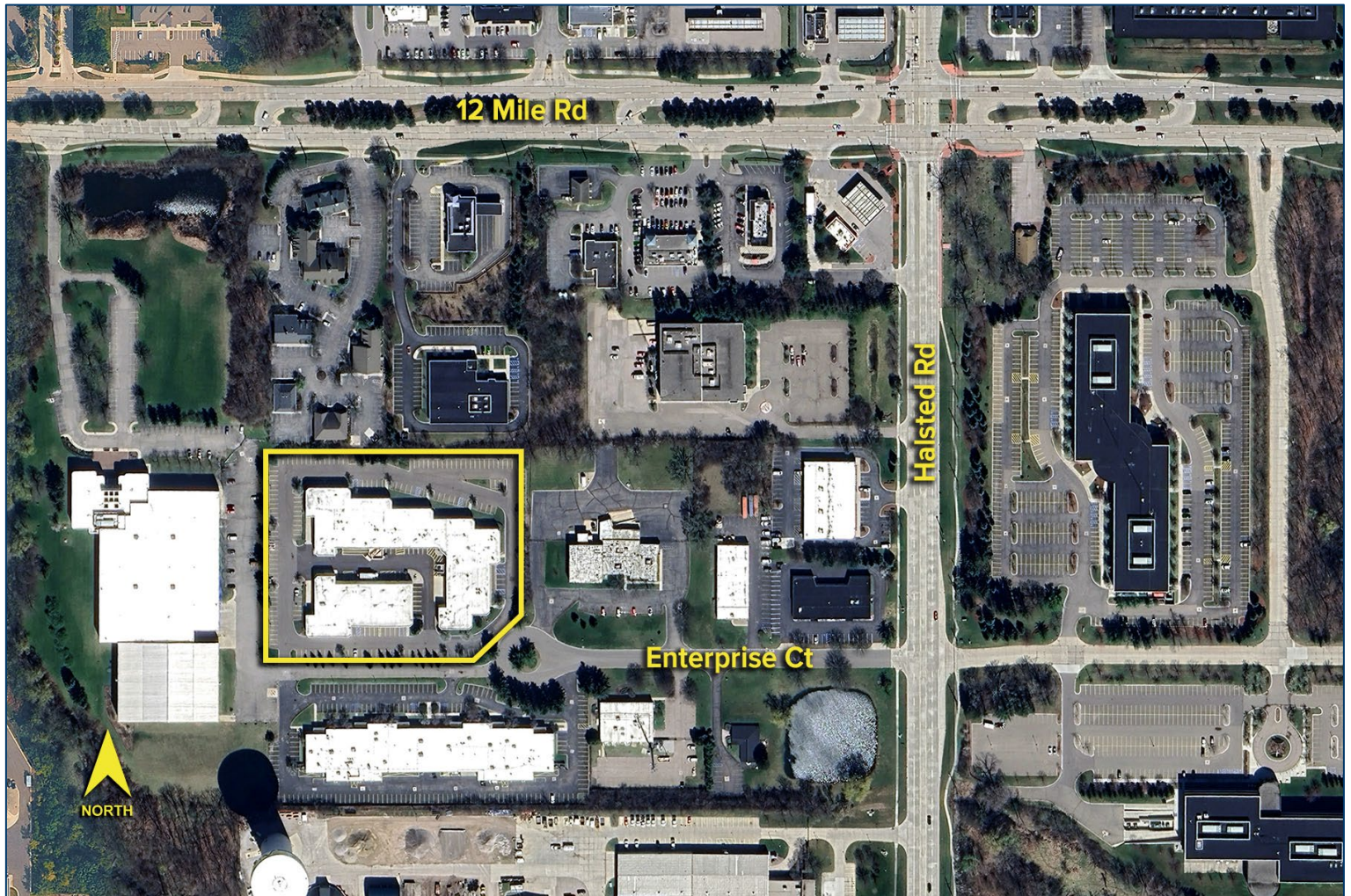
**SIGNATURE ASSOCIATES**  
One Towne Square, Suite 1200  
Southfield, MI 48076  
www.signatureassociates.com

# 37676-37696 Enterprise – Farmington Hills, Michigan

## Hi-Tech For Lease

15,607  
Square Feet  
AVAILABLE

Aerial



For more information, please contact:

**DAVE GREEN**  
(248) 948 4184  
dgreen@signatureassociates.com

**JOE PLASKEY**  
(248) 948 0110  
jplaskey@signatureassociates.com

**SIGNATURE ASSOCIATES**  
One Towne Square, Suite 1200  
Southfield, MI 48076  
www.signatureassociates.com