



# Industrial Building for Sale

**11000 LAKEVIEW AVENUE  
LENEXA, KANSAS**

## Property Highlights

- Flex building in the heart of Lenexa industrial
- 15,086 sf building
- Currently leased to two tenants
- 50% of building could be available to an owner-user in 2027, contact broker for details
- Class A office build out
- Two dock-high loading doors
- One drive-in door
- Located off of College Boulevard with nearby access to K-10, I-435 and I-35
- Sale price \$2,640,050

*For information, please contact:*

### Scott Bluhm

*Executive Managing Director, Principal*  
t 816-268-4224  
sbluhm@nzimmer.com

### Seamus M. McLaughlin

*Senior Managing Director*  
t 816-268-4223  
smclaughlin@nzimmer.com

1220 Washington Street, Suite 300  
Kansas City, MO 64105

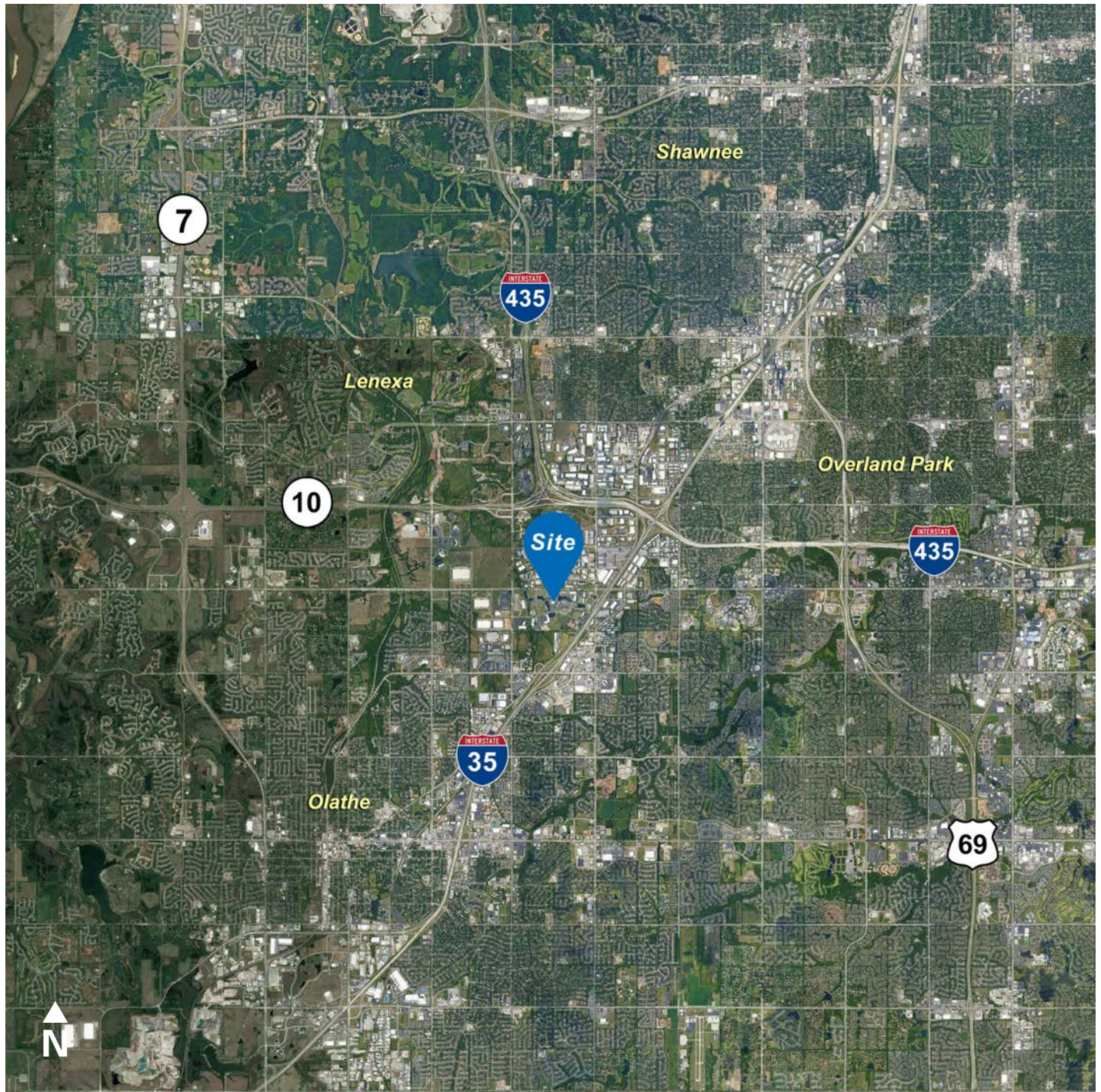
[nrmkzimmer.com](http://nrmkzimmer.com)



**NEWMARK**  
ZIMMER

The information contained herein has been obtained from sources deemed reliable but has not been verified and no guarantee, warranty or representation, either express or implied, is made with respect to such information. Terms of sale or lease and availability are subject to change or withdrawal without notice.

11000 LAKEVIEW AVENUE, LENEXA, KANSAS



CONTACT

**Scott Bluhm**

*Executive Managing Director, Principal*

t 816-268-4224

sbluhm@nzimmer.com

[nmrkzimmer.com](http://nmrkzimmer.com)

**Seamus M. McLaughlin**

*Senior Managing Director*

t 816-268-4223

smclaughlin@nzimmer.com

**NEWMARK**  
ZIMMER

**11000 LAKEVIEW AVENUE, LENEXA, KANSAS**



**CONTACT**

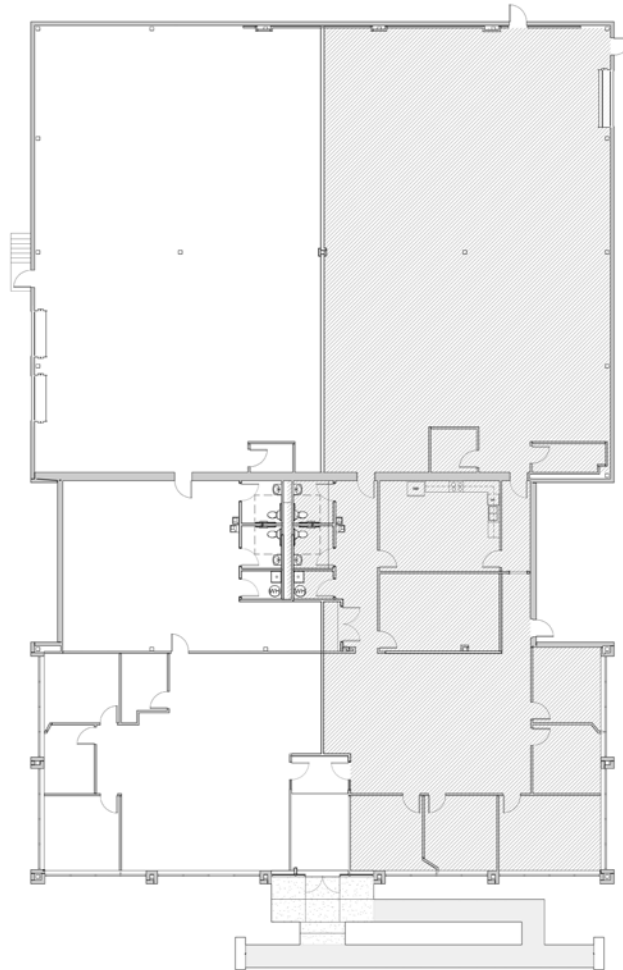
**Scott Bluhm**  
*Executive Managing Director, Principal*  
t 816-268-4224  
sbluhm@nzimmer.com  
[nmrkzimmer.com](http://nmrkzimmer.com)

**Seamus M. McLaughlin**  
*Senior Managing Director*  
t 816-268-4223  
smclaughlin@nzimmer.com



11000 LAKEVIEW AVENUE, LENEXA, KANSAS

## Floor Plan



### CONTACT

---

**Scott Bluhm**

*Executive Managing Director, Principal*

t 816-268-4224

sbluhm@nzimmer.com

[nmrkzimmer.com](http://nmrkzimmer.com)

**Seamus M. McLaughlin**

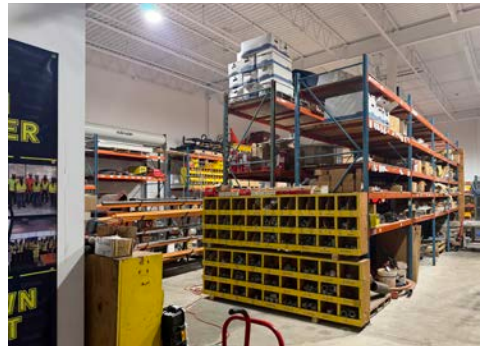
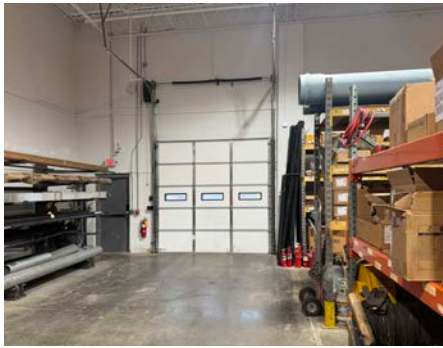
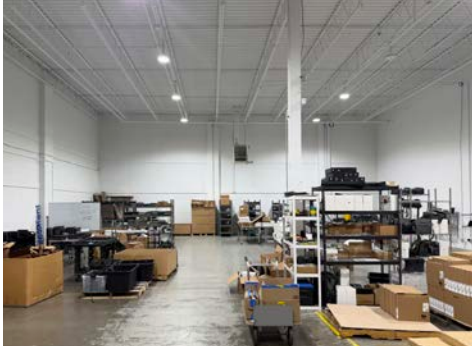
*Senior Managing Director*

t 816-268-4223

smclaughlin@nzimmer.com

**NEWMARK**  
ZIMMER

11000 LAKEVIEW AVENUE, LENEXA, KANSAS



CONTACT

**Scott Bluhm**  
Executive Managing Director, Principal  
t 816-268-4224  
sbluhm@zimmer.com  
[nmrkzimmer.com](http://nmrkzimmer.com)

**Seamus M. McLaughlin**  
Senior Managing Director  
t 816-268-4223  
smclaughlin@zimmer.com

**NEWMARK**  
ZIMMER