

AN OFFICE LEASE OPPORTUNITY

RIVERSIDE CENTER

2600 VAN BUREN ST, NORMAN, OK 73072



JUDY J. HATFIELD, CCIM

Equity Commercial Realty Advisors, LLC
Founding Principal
(405) 640-6167 office
(405) 640-6167 cell
jjhatfield@equityrealty.net

TYLER STEER

Equity Commercial Realty Advisors, LLC
Associate
(405) 640-6167 office
(405) 642-4335 cell
tsteer@equityrealty.net



OFFERING SUMMARY

Total Available SF:	12,073 SF
(1st Floor) Suite 2600:	1,178 SF
Suite 2601:	1,650 SF
Suite 2601-B:	1,630 SF
(2nd Floor) Suites 2620 - 2622:	1,982 SF
Suite 2623:	1,070 SF
Suite 2625:	1,283 SF
(3rd Floor) Suite 2631:	927 SF
Suite 2633:	1,070 SF
Suite 2635:	1,283 SF
Lease Rate:	\$14.00/SF
Lot Size:	1.23 Acres
Building Size:	29,750 SF

PROPERTY HIGHLIGHTS

- All Bills are Paid by the Landlord Including Utilities, Janitorial, and Maintenance
- Located on the Southeast Corner of Highway 9 & Interstate 35
- Well-Manicured Property with Sprinklers | Open Atrium | Glass Elevator
- Ample On-Site Parking (69 Spaces)
- Fantastic Tenant Mix - Attorneys, Engineers, Tech, Healthcare, and more.
- Security by ADT with Exterior Camera System | Building is Fully Sprinklered
- Judy J. Hatfield, Broker / Owner

JUDY J. HATFIELD, CCIM

Founding Principal

Equity Commercial Realty Advisors, LLC
jjhatfield@equityrealty.net

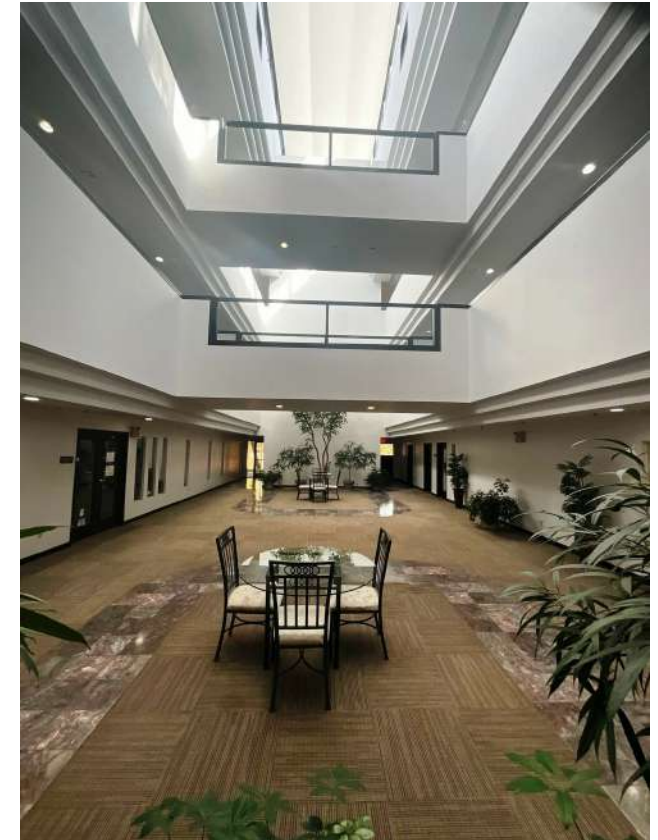
(405) 640-6167 cell
(405) 640-6167 office

TYLER STEER

Associate

Equity Commercial Realty Advisors, LLC
tsteer@equityrealty.net

(405) 642-4335 cell
(405) 640-6167 office



JUDY J. HATFIELD, CCIM

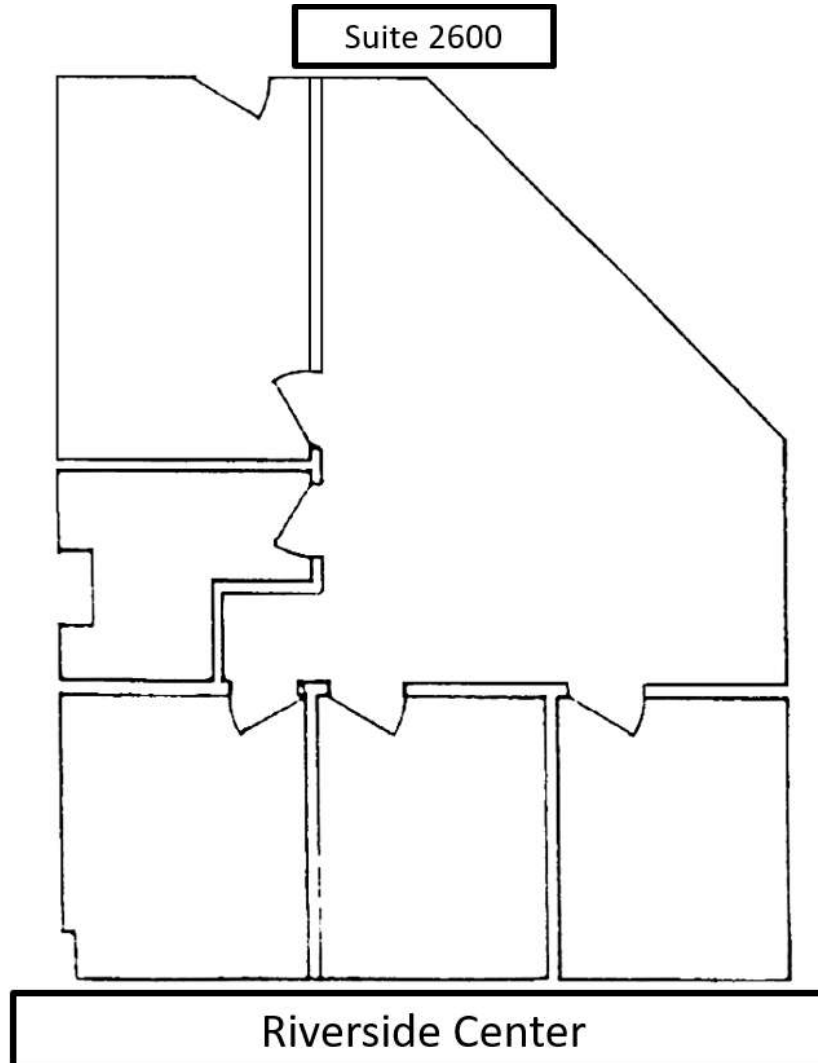
Founding Principal

Equity Commercial Realty Advisors, LLC (405) 640-6167 cell
jjhatfield@equityrealty.net (405) 640-6167 office

TYLER STEER

Associate

Equity Commercial Realty Advisors, LLC (405) 642-4335 cell
tsteer@equityrealty.net (405) 640-6167 office



1ST FLOOR LAYOUT: Suite 2600

(1,178 SF)

JUDY J. HATFIELD, CCIM

Founding Principal

Equity Commercial Realty Advisors, LLC

jjhatfield@equityrealty.net

(405) 640-6167 cell

(405) 640-6167 office

TYLER STEER

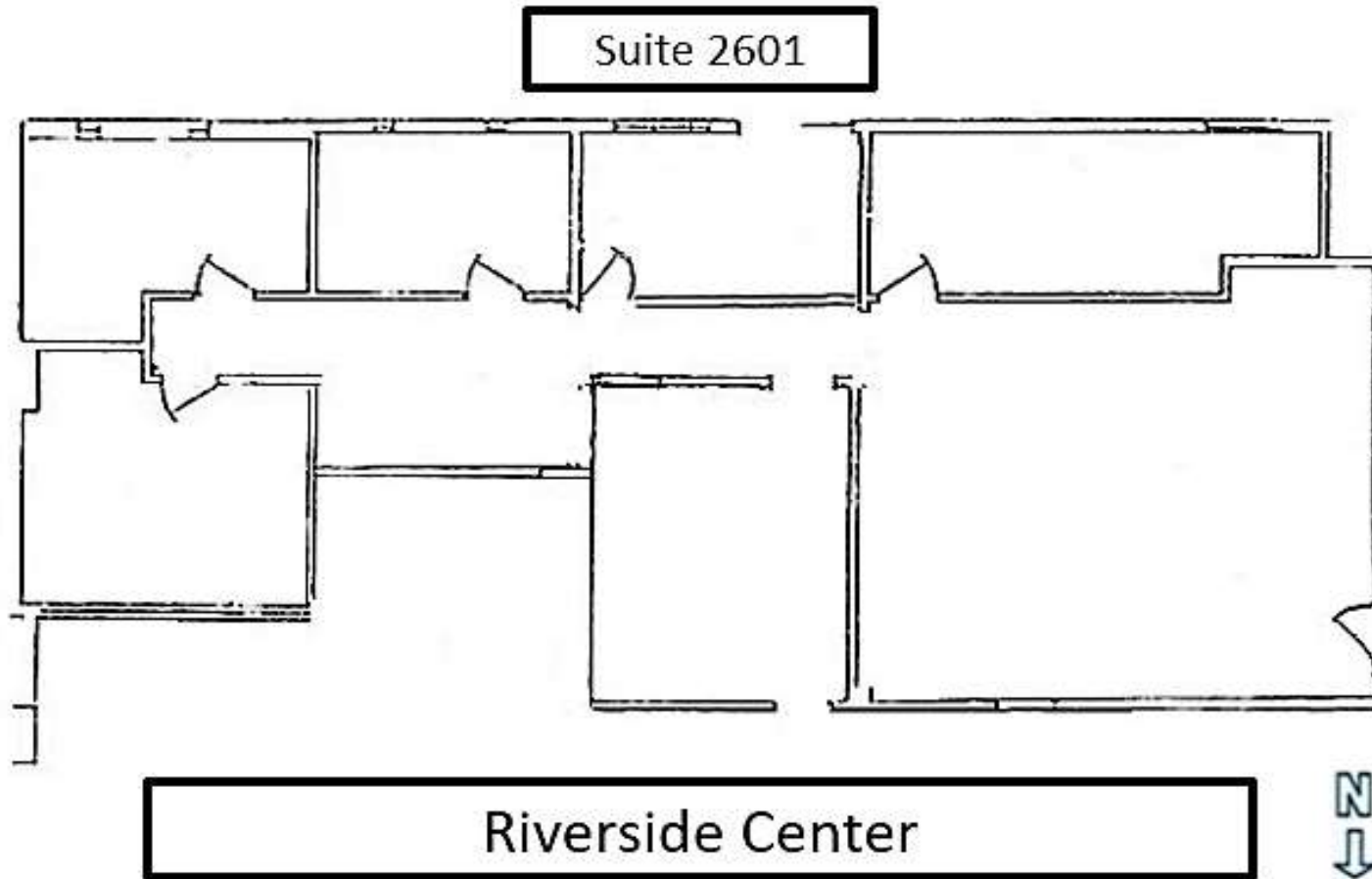
Associate

Equity Commercial Realty Advisors, LLC

tsteer@equityrealty.net

(405) 642-4335 cell

(405) 640-6167 office



1ST FLOOR LAYOUT: Suite 2601

(1,650 SF)

JUDY J. HATFIELD, CCIM

Founding Principal

Equity Commercial Realty Advisors, LLC
jjhatfield@equityrealty.net

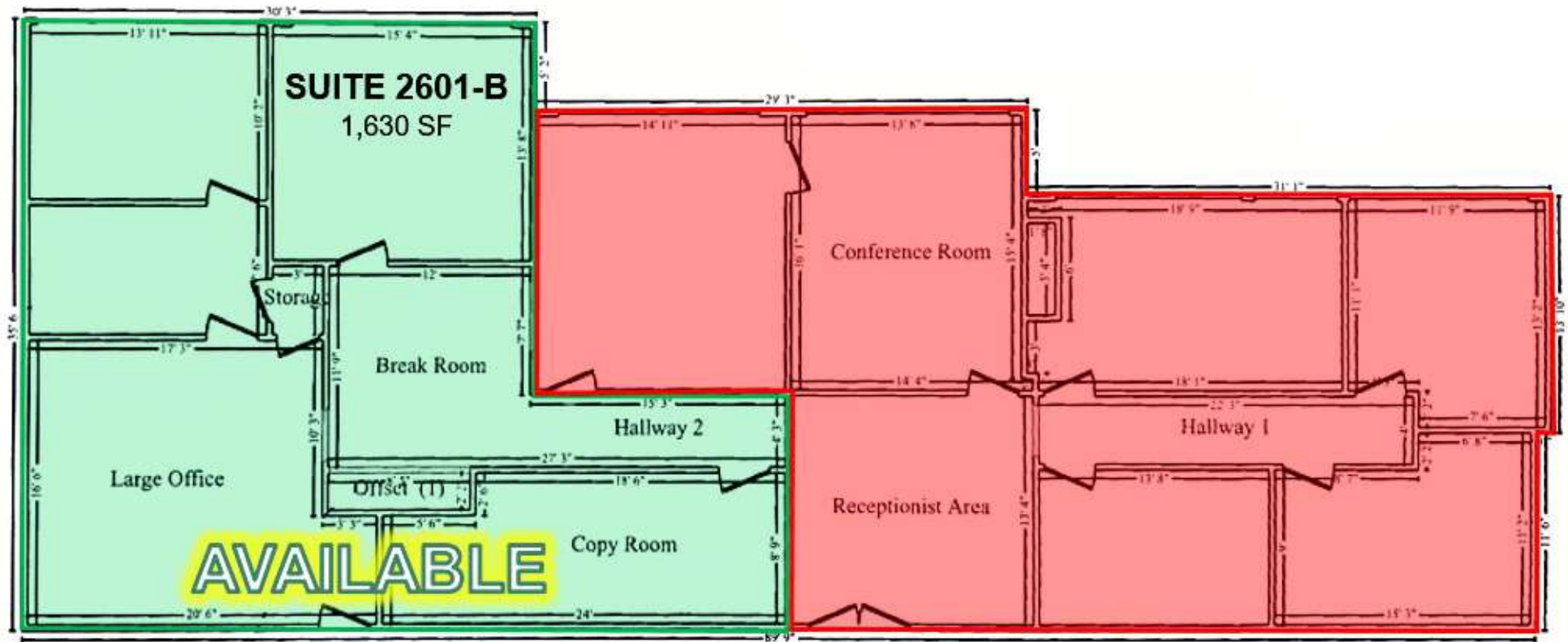
(405) 640-6167 cell
(405) 640-6167 office

TYLER STEER

Associate

Equity Commercial Realty Advisors, LLC
tsteer@equityrealty.net

(405) 642-4335 cell
(405) 640-6167 office



1ST FLOOR LAYOUT: Suite 2601-B

(1,630 SF)

JUDY J. HATFIELD, CCIM

Founding Principal

Equity Commercial Realty Advisors, LLC
jjhatfield@equityrealty.net

(405) 640-6167 cell
(405) 640-6167 office

TYLER STEER

Associate

Equity Commercial Realty Advisors, LLC
tsteer@equityrealty.net

(405) 642-4335 cell
(405) 640-6167 office



2ND FLOOR LAYOUT: Suites 2620 - 2622

(1,982 SF)

JUDY J. HATFIELD, CCIM

Founding Principal

Equity Commercial Realty Advisors, LLC

jihatfield@equityrealty.net

(405) 640-6167 cell

(405) 640-6167 office

TYLER STEER

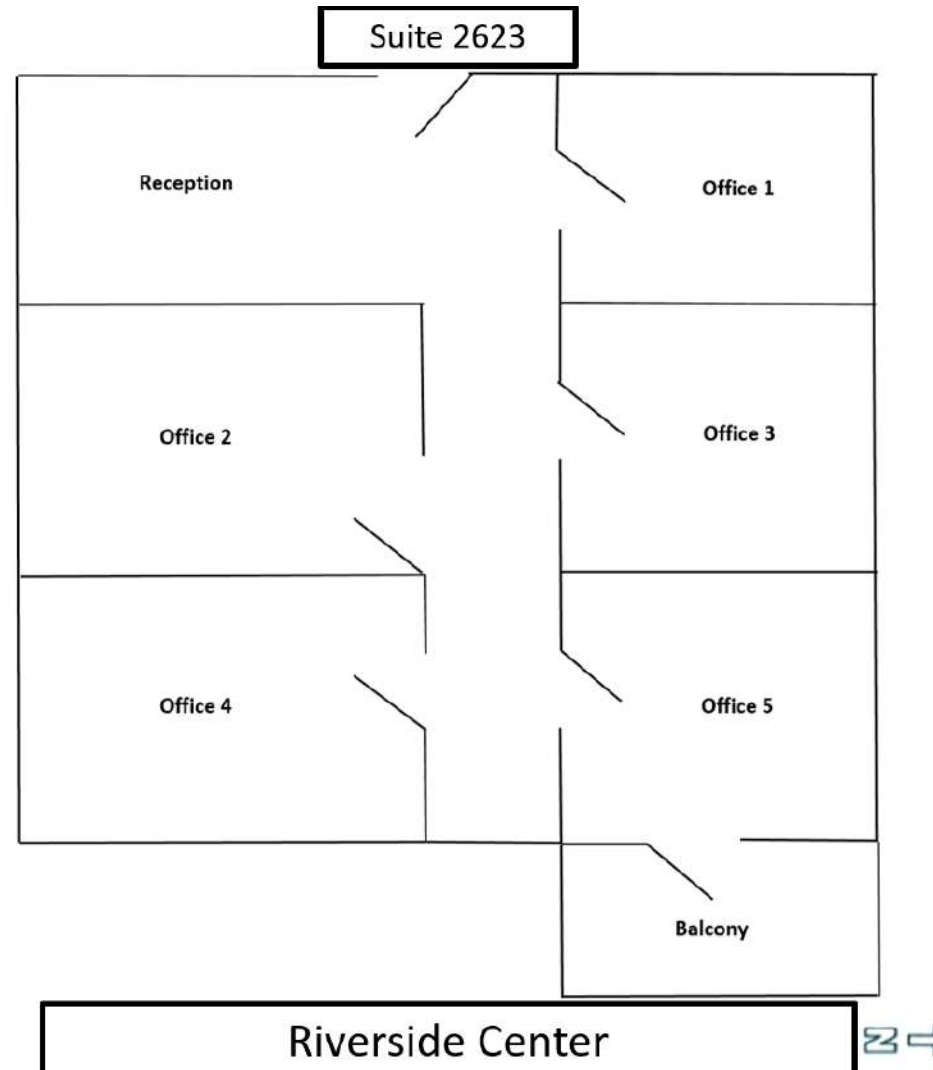
Associate

Equity Commercial Realty Advisors, LLC

tsteer@equityrealty.net

(405) 642-4335 cell

(405) 640-6167 office



2ND FLOOR LAYOUT: Suite 2623

(1,070 SF)

JUDY J. HATFIELD, CCIM

Founding Principal

Equity Commercial Realty Advisors, LLC
jjhatfield@equityrealty.net

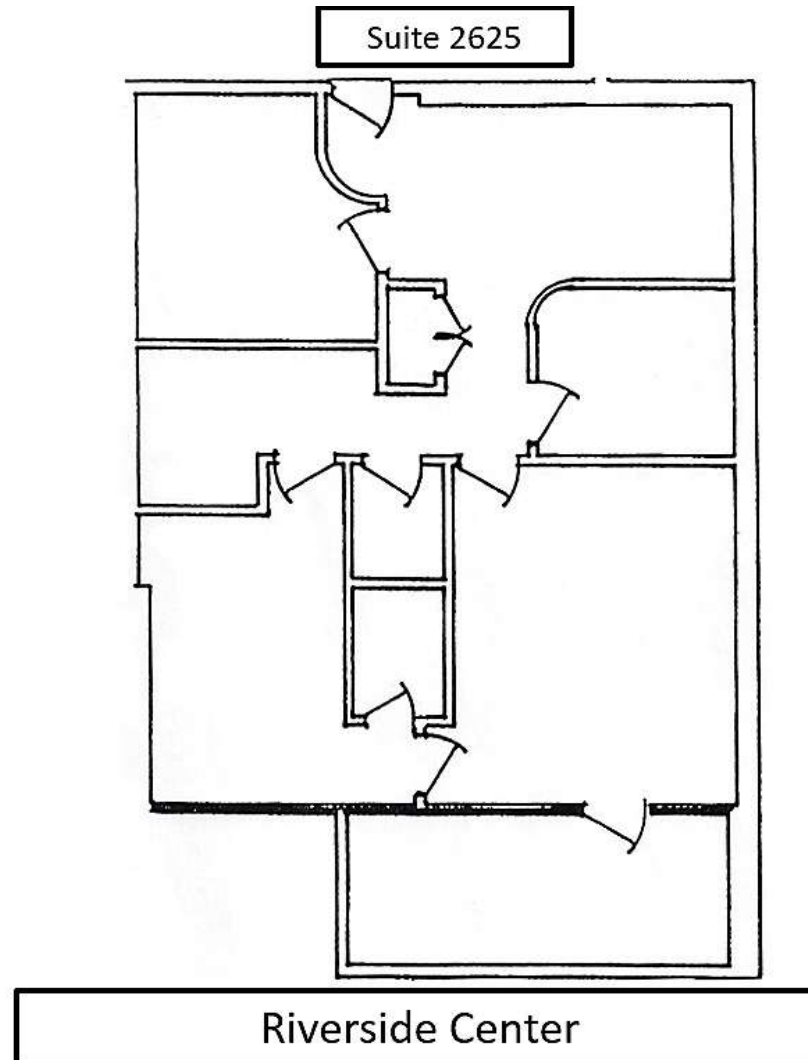
(405) 640-6167 cell
(405) 640-6167 office

TYLER STEER

Associate

Equity Commercial Realty Advisors, LLC
tsteer@equityrealty.net

(405) 642-4335 cell
(405) 640-6167 office



2ND FLOOR LAYOUT: Suite 2625

(1,283 SF)

JUDY J. HATFIELD, CCIM

Founding Principal

Equity Commercial Realty Advisors, LLC (405) 640-6167 cell
jjhatfield@equityrealty.net (405) 640-6167 office

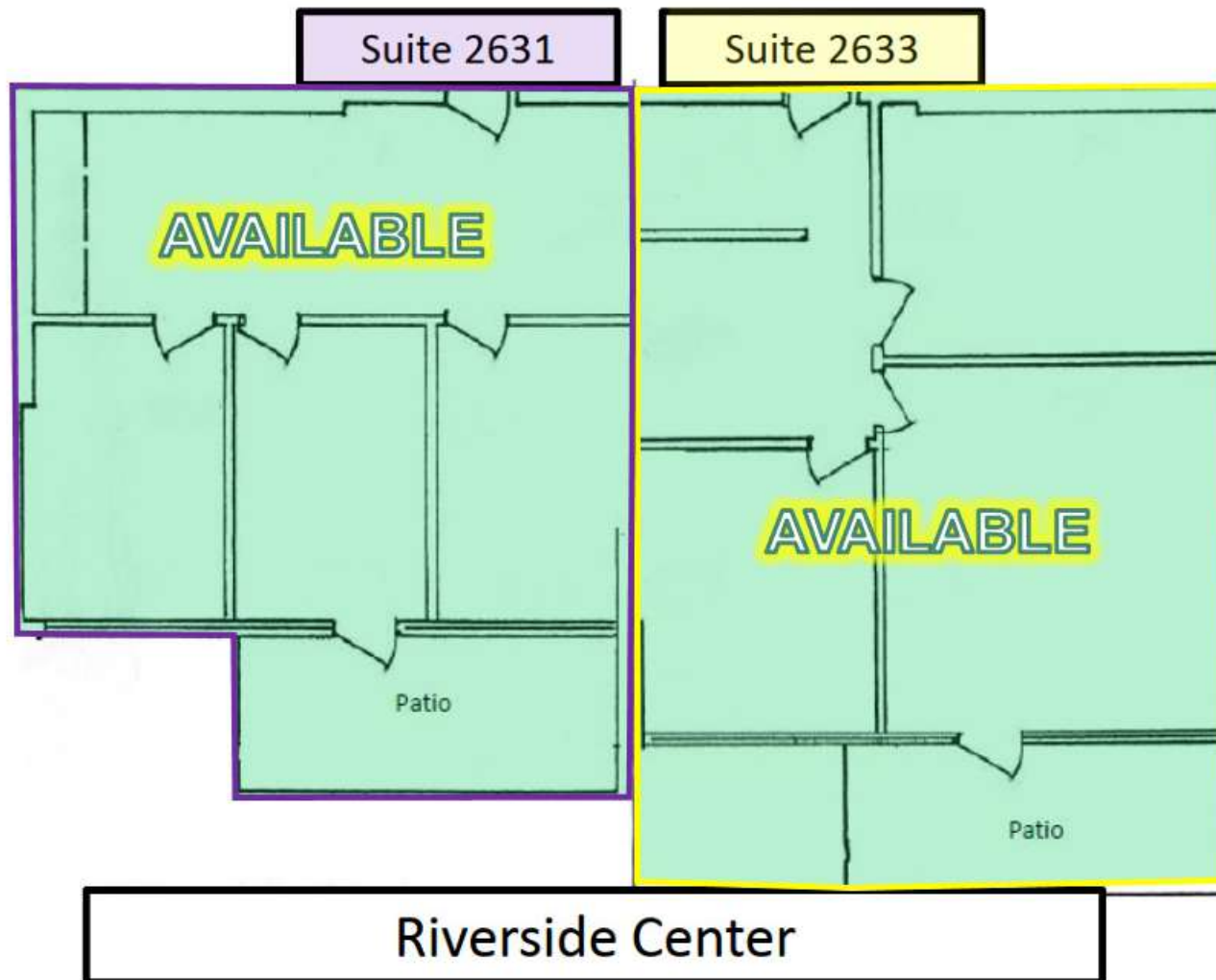
TYLER STEER

Associate

Equity Commercial Realty Advisors, LLC (405) 642-4335 cell
tsteer@equityrealty.net (405) 640-6167 office

SUITE 2631 & 2633

RIVERSIDE CENTER



3RD FLOOR LAYOUT: Suite 2631

(927 SF) | Suite 2633

(1,070 SF)

JUDY J. HATFIELD, CCIM

Founding Principal

Equity Commercial Realty Advisors, LLC
jjhatfield@equityrealty.net

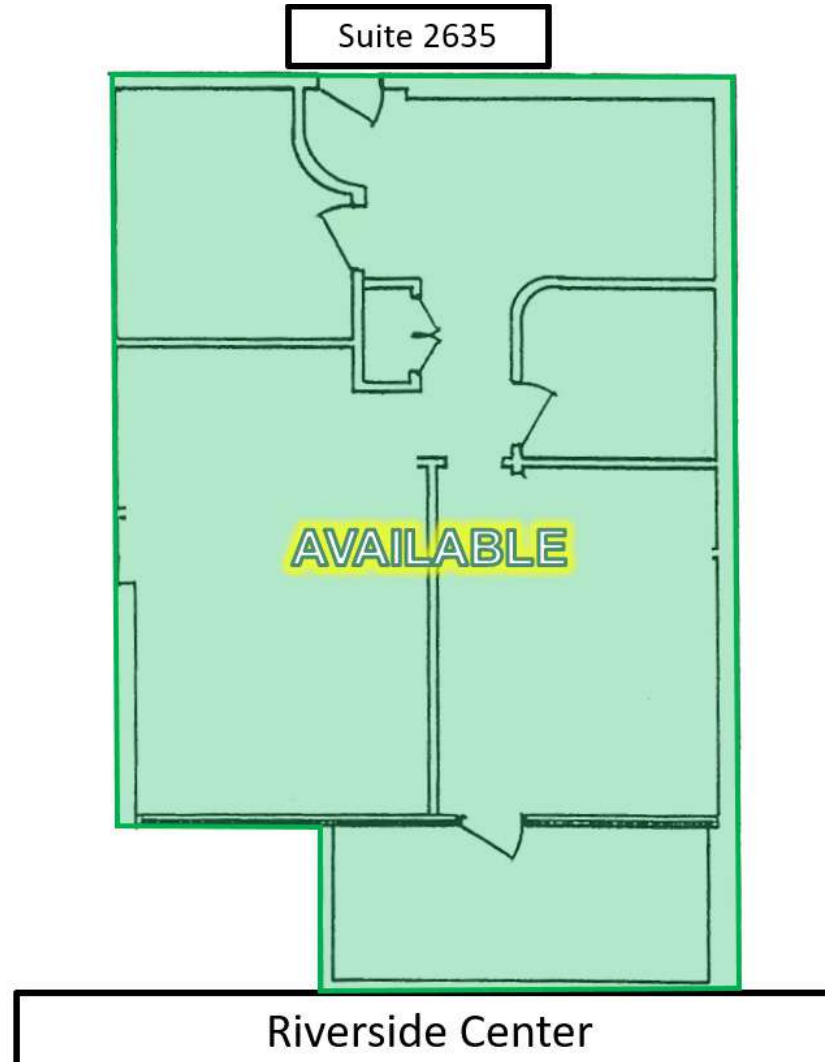
(405) 640-6167 cell
(405) 640-6167 office

TYLER STEER

Associate

Equity Commercial Realty Advisors, LLC
tsteer@equityrealty.net

(405) 642-4335 cell
(405) 640-6167 office



3RD FLOOR LAYOUT: Suite 2635

(1,283 SF)

JUDY J. HATFIELD, CCIM

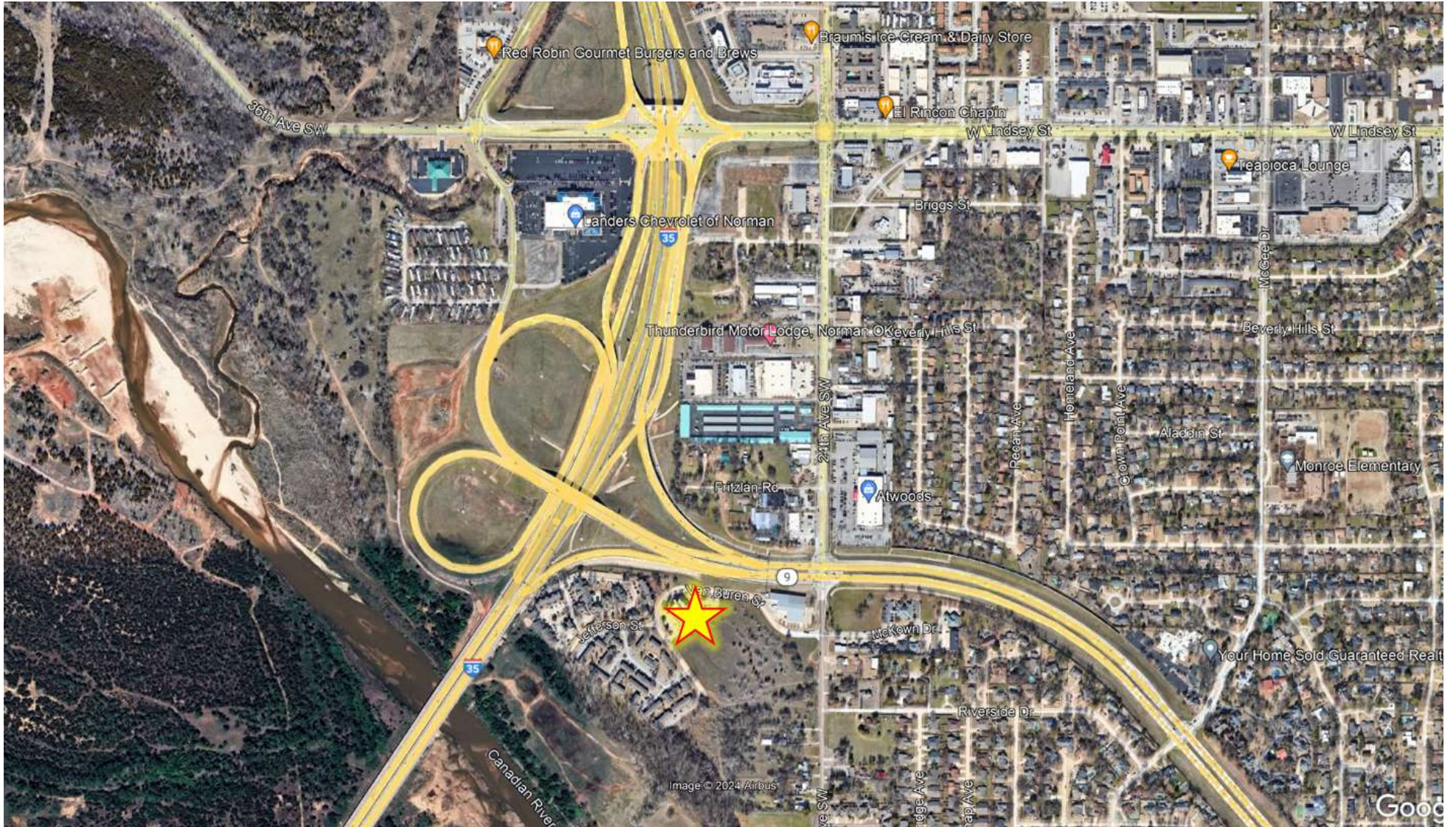
Founding Principal
Equity Commercial Realty Advisors, LLC (405) 640-6167 cell
jjhatfield@equityrealty.net (405) 640-6167 office

TYLER STEER

Associate
Equity Commercial Realty Advisors, LLC (405) 642-4335 cell
tsteer@equityrealty.net (405) 640-6167 office

RIVERSIDE CENTER

2600 VAN BUREN ST, NORMAN, OK 73072



JUDY J. HATFIELD, CCIM

Founding Principal
Equity Commercial Realty Advisors, LLC
jjhatfield@equityrealty.net

(405) 640-6167 cell
(405) 640-6167 office

TYLER STEER

Associate
Equity Commercial Realty Advisors, LLC
tsteer@equityrealty.net

(405) 642-4335 cell
(405) 640-6167 office