



Flex Space for Lease

2218 & 2220 Mounds View Blvd.
Mounds View, MN

AVAILABLE SPACE

- Two adjacent Suites
 - Suite 2218
 - 3344 SF – former Scout Troop
 - Showroom
 - Small warehouse with 12' door
 - Suite 2220
 - 2151 SF – former Chiropractor
 - Office & therapy rooms
 - Can be demo'd
 - Dock door
- Spaces can be combined
- Great signage & visibility to Mounds View Boulevard
- 24,413 vehicles per day
- Fantastic access to I-35 W
- Zoned B-3 (Highway Business)



PROPERTY DETAILS

15.00 / RSF (NNN)
2026 CAM / Tax \$4.31 / SF
(estimated)

FOR MORE INFORMATION, CONTACT

Marty Fisher / Mike Fisher

763-862-2005

mfisher@premiercommercialproperties.com

mikefisher@premiercommercialproperties.com



PREMIER
COMMERCIAL
PROPERTIES

FOR LEASE

CONTACT: Marty Fisher

MOBILE: 612-708-2873

EMAIL: mfisher@premiercommercialproperties.com

Suite 2218 (3,344 SF)

- Showroom with warehouse & drive-in door
- 16' Clear height





PREMIER
COMMERCIAL
PROPERTIES

FOR LEASE

CONTACT: Marty Fisher

MOBILE: 612-708-2873

EMAIL: mfisher@premiercommercialproperties.com

Suite 2220

- Built out office / therapy rooms
- Can be demo'd
- Dock access / 16 ' clear height



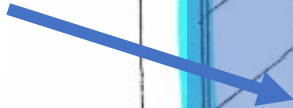


CONTACT: Marty Fisher

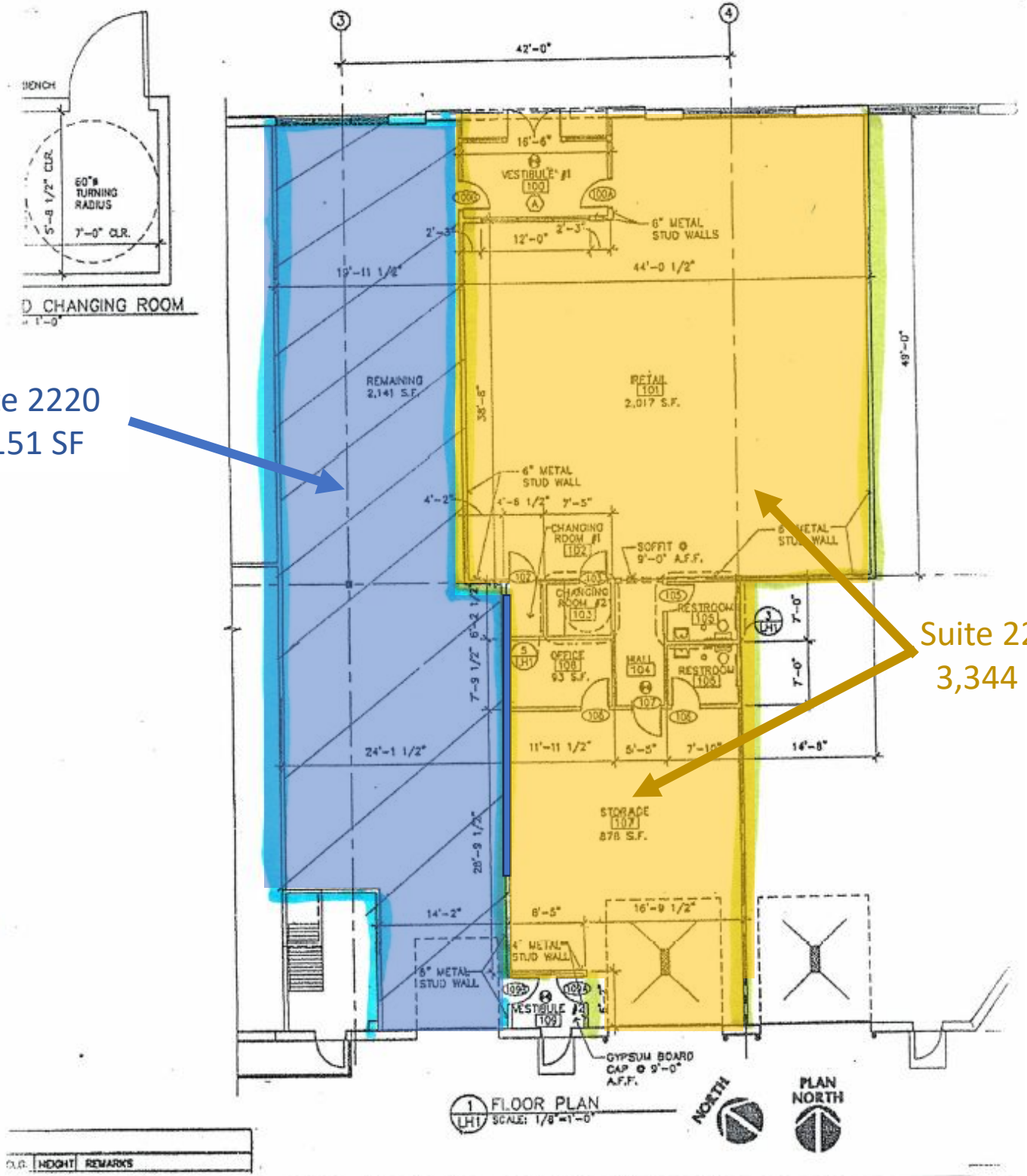
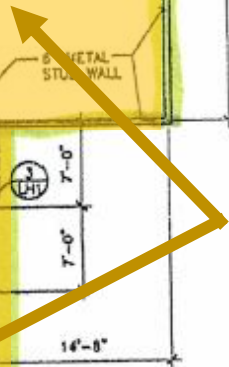
MOBILE: 612-708-2873

EMAIL: mfisher@premiercommercialproperties.com

Suite 2220
2,151 SF



Suite 2218
3,344 SF





PREMIER
COMMERCIAL
PROPERTIES

FOR LEASE

CONTACT: Marty Fisher

MOBILE: 612-708-2873

EMAIL: mfisher@premiercommercialproperties.com

Demographics (2025)	1 Mile	3 Miles	5 Miles
Population	7,629	62,988	187,209
Households	2,990	24,615	74,281
Avg. Household Income	\$107,086	\$115,550	\$111,189

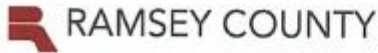




CONTACT: Marty Fisher

MOBILE: 612-708-2873

EMAIL: mfisher@premiercommercialproperties.com



Overview



Legend

- Tax Parcel
- Ramsey County
- Waterbody
- Parcel Info

Parcel ID<	083023430010	Alternate ID	n/a	Owner	MOUNDS VIEW BUSINESS
Sec/Twp/Rng	08/30/23	Tax	3A INDUSTRIAL LAND AND	Address	PROP LLC
Property	2214 MOUNDS VIEW	Classification	BUILDING;		PO BOX 490546
Address	BLVD MOUNDS VIEW	Parcel Area	1.7194		MINNEAPOLIS MN 55449-0546
Tax Authority Group (TAG)	MOUNDS VIEW 621 R				
Brief Tax Description	HERBST ENTERPRISES LOT 1 BLK 1				
	(Note: Not to be used on legal documents)				

Date created: 4/11/2026
Last Data Uploaded: 4/11/2026 10:03:00 AM

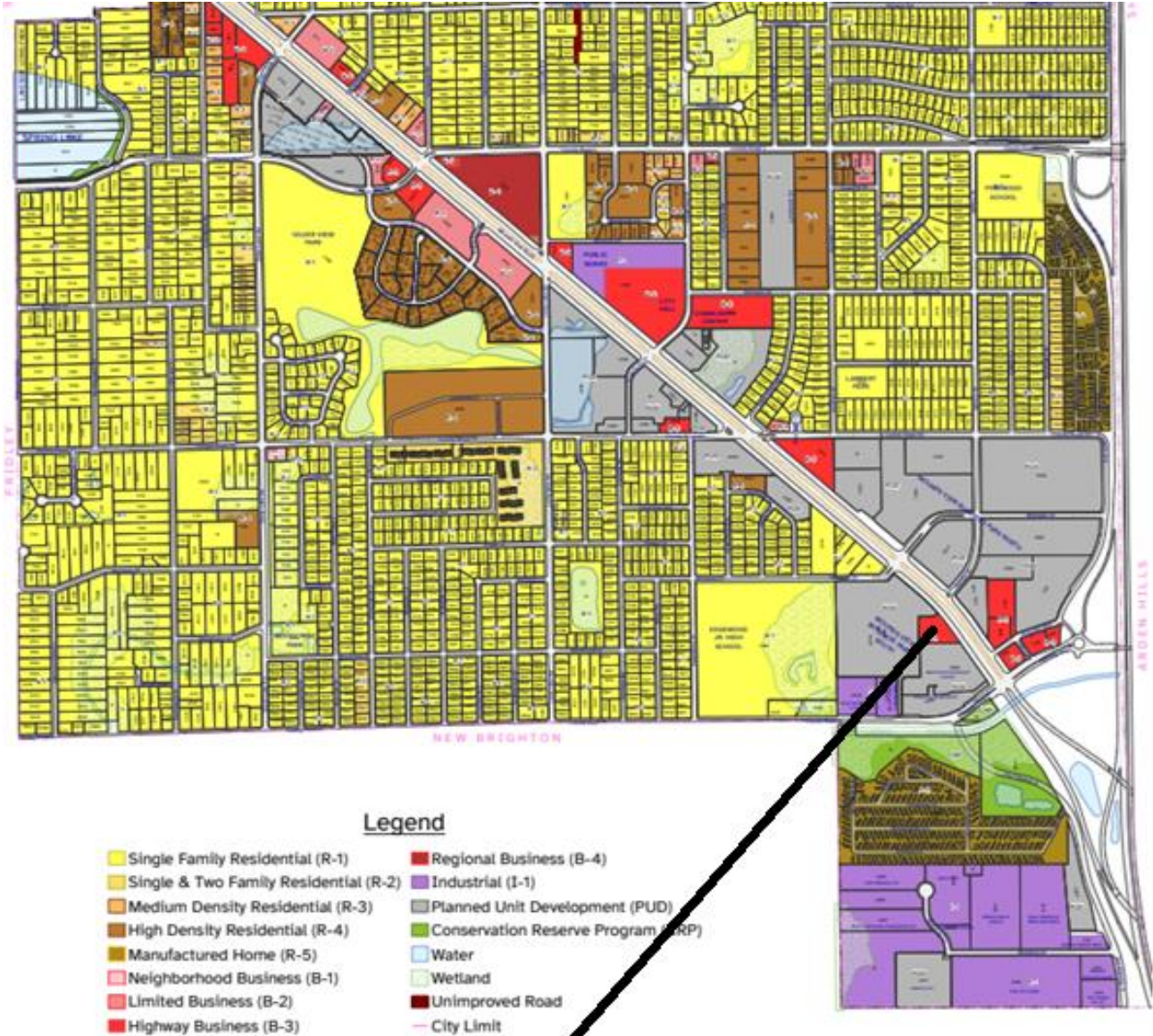
Developed by SCHNEIDER
GEOSPATIAL



CONTACT: Marty Fisher

MOBILE: 612-708-2873

EMAIL: mfisher@premiercommercialproperties.com



Site





PREMIER
COMMERCIAL
PROPERTIES

FOR LEASE

CONTACT: Marty Fisher

MOBILE: 612-708-2873

EMAIL: mfisher@premiercommercialproperties.com

