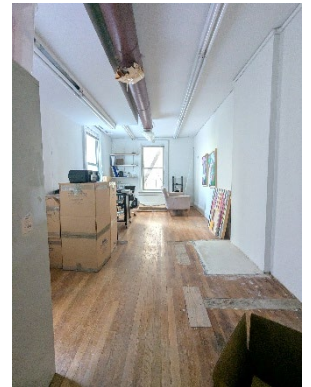
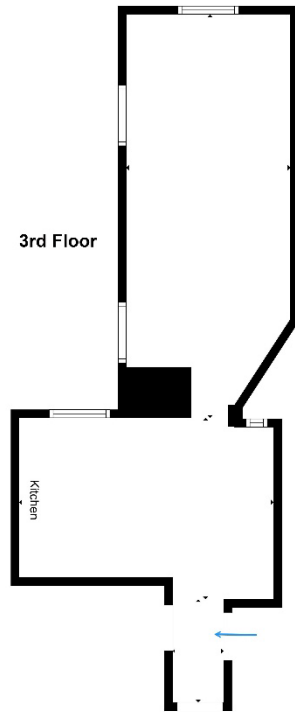
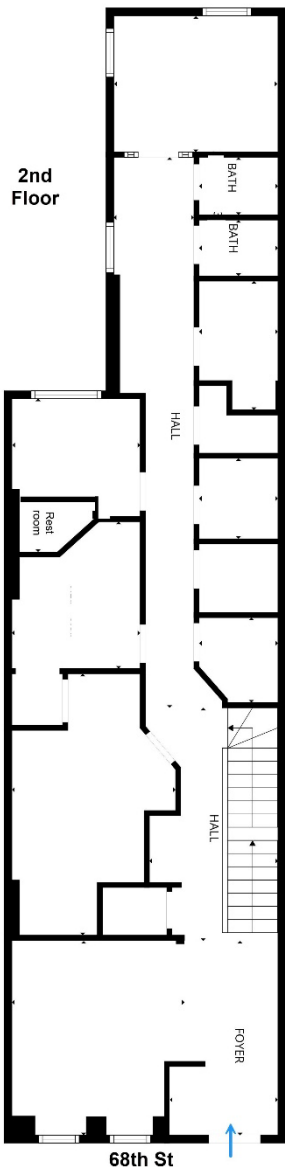
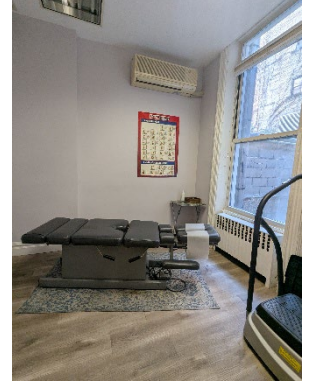


Office / Medical / Fitness - Townhouse  
222 E 68th St: Whole 2nd & Partial 3rd Floors  
1,565 RSF and 1,064 RSF



- ❑ PRIME UES BLOCK
- ❑ RENT EITHER FLOOR OR BOTH TOGETHER
- ❑ CLASSIC UPTOWN BROWNSTONE
- ❑ HIGH CEILINGS & WOODEN FLOORS
- ❑ WINDOWS ON 3 SIDES, GOOD NATURAL LIGHT
- ❑ OFFICES & OPEN SPACES
- ❑ WET PANTRY / KITCHEN CLOSETS
- ❑ PRIVATE RESTROOMS & SOME SINKS
- ❑ ABILITY TO ADD MORE SINKS

**LOCATION**

**SUBWAYS: 6 (1 block away) and Q (3 blocks)**  
**Off 3rd Avenue on High Traffic Street**

**EXCLUSIVE AGENTS:**

**RUDY DEDOMINICIS**  
917-566-9359  
rudy@fpr.nyc

**DAVID DYNAK**  
917-572-5746  
david@fpr.nyc

Information contained herein is from sources deemed reliable but is subject to errors, omissions, change of price or term, and withdrawal without prior notice at any time.