



WHITE HOUSE I-65 BUSINESS CENTER

1204 Love's Lane, White House, TN 37188

306,117 SF Available for Lease



LEASING AGENT



DEVELOPER

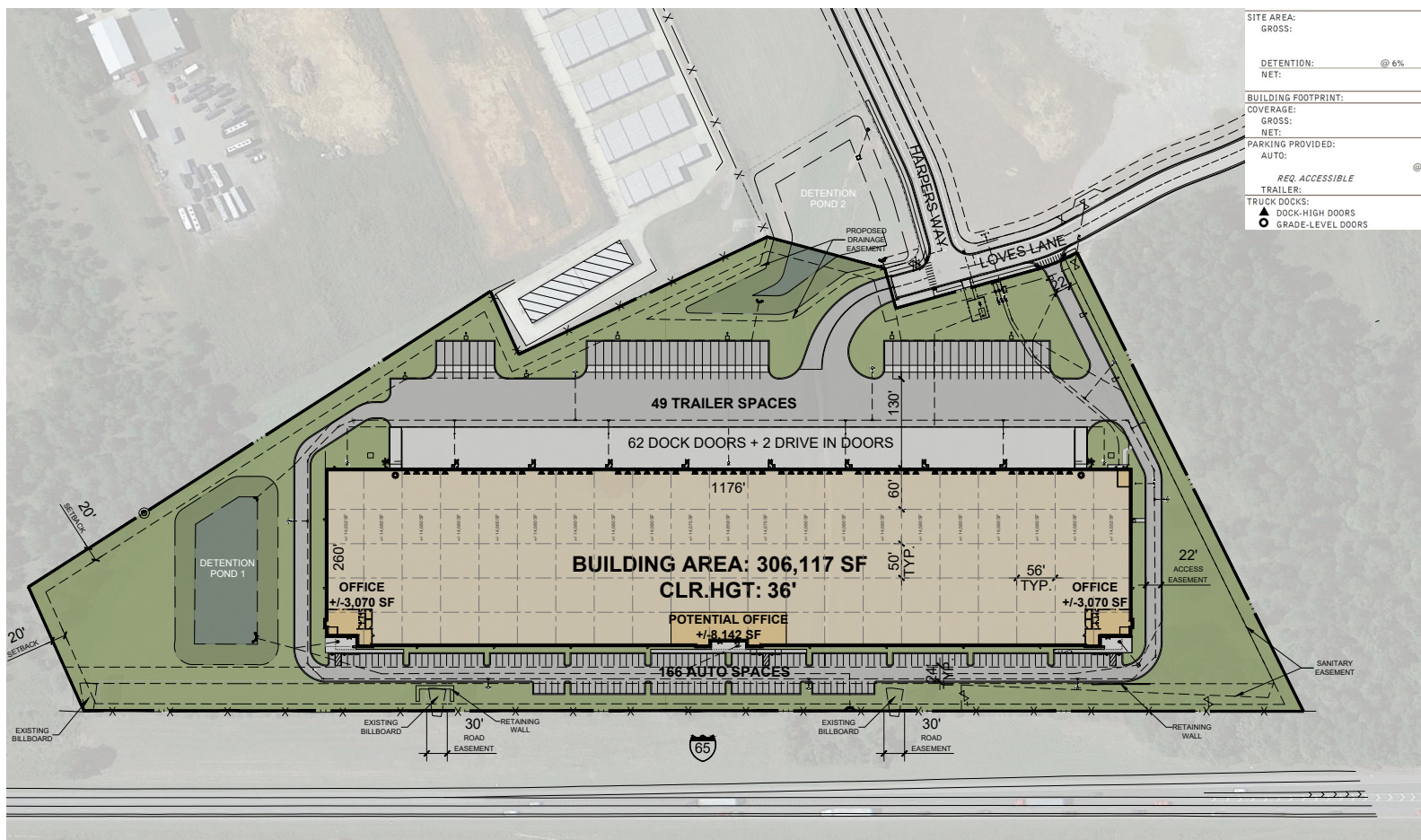
WHITE HOUSE I-65 BUSINESS CENTER

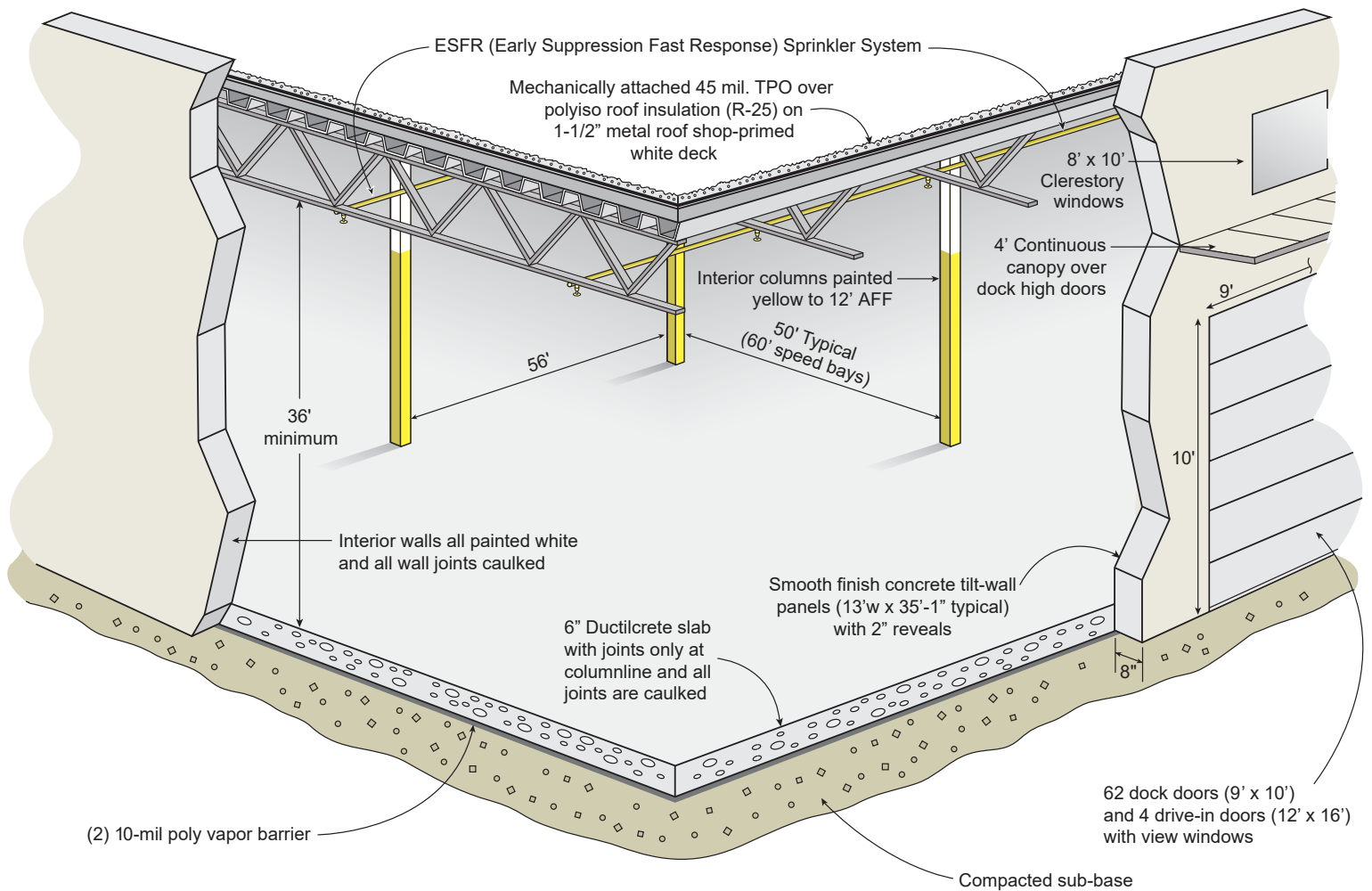
1204 Love's Lane, White House, TN 37188

306,117 SF Available for Lease

Core5 Logistics Center at White House is located in White House, Tennessee less than 1/2 mile from I-65 with superior interstate visibility (+/-63,000 vehicles per day). The building will be divisible to ±100,000 SF.

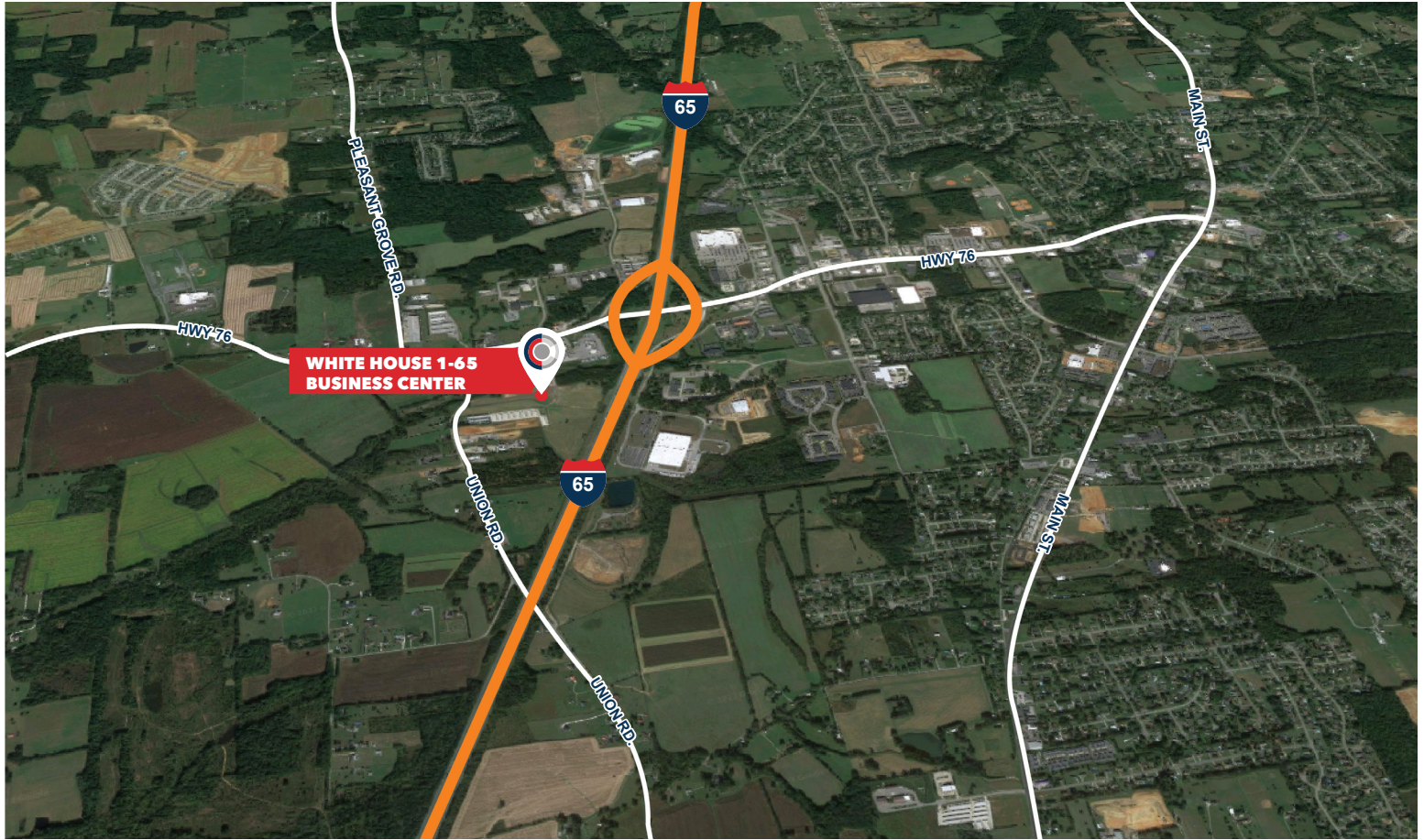
The site is a 30 minute drive from downtown Nashville CBD and is approximately two (2) hours from UPS headquarters in Louisville and 30 minutes from UPS and FedEx ground hubs in Nashville.





BUILDING SPECIFICATIONS

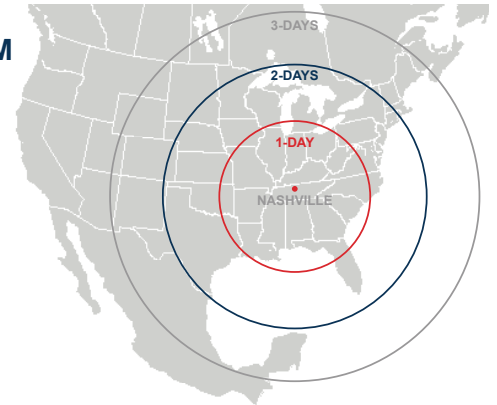
Square Footage	306,117 SF
Site Area	20.7 Acres
Configuration	Rear load
Column Spacing	56' Wide x 50' deep, with 60' loading bay
Clear Height	36' Clear minimum
Dock High Doors	62 (31 Dock high doors equipped with 40,000 lb mechanical levelers)
Drive-In Doors	2
Truck Court Depth	130' - 185'
Auto Parking	166 Auto spaces
Trailer Storage	49 Trailer storage locations
Electrical	Two (2) 2000 Amp Services
Sprinkler	ESFR sprinkler system



**WHITE HOUSE 1-65
BUSINESS CENTER**

Highway 76	±0.1 miles
Interstate 65	±0.3 miles
Kentucky	±13.8 miles
Downtown Nashville	±24.7 Miles
Nashville International Airport (BNA)	±29.7 miles
Lebanon, TN	±36.0 miles
Franklin, TN	±46.6 miles
Murfreesboro, TN	±61.2 miles

DAYS TRUCK DRIVE TO/FROM NASHVILLE



Rodney Davidson
Vice President Investments

O 404.262.5432
C 678.524.8812

rdavidson@c5ip.com



Jim Rodrigues, SIOR
President

O 615.751.2353
C 615.300.7065

jrodrigues@lee-associates.com

Brett Wallach
Partner

O 615.751.2340
C 714.401.0615

bwallach@lee-associates.com

© Copyright 2023 Core5 Industrial Partners, LLC. All rights reserved.

CORE5, CORE5 INDUSTRIAL PARTNERS, and the stylized "C" CORE5 INDUSTRIAL PARTNERS design / logo are service marks of Core5 Industrial Partners, LLC for its real estate services, namely, acquisition, rental, brokerage, development, leasing, and management of industrial real estate property. These marks may not be used without express permission of Core5 Industrial Partners, LLC.

All information furnished regarding property for sale, rental or financing is from sources deemed reliable, but no warranty or representation is made to the accuracy thereof and same is submitted to errors, omissions, change of price, rental or other conditions prior to sale, lease or financing or withdrawal without notice. No liability of any kind is to be imposed on the broker herein.