



55,274 SF AVAILABLE FOR LEASE • LAB / DATA CENTER / LIGHT MANUFACTURING / OFFICE



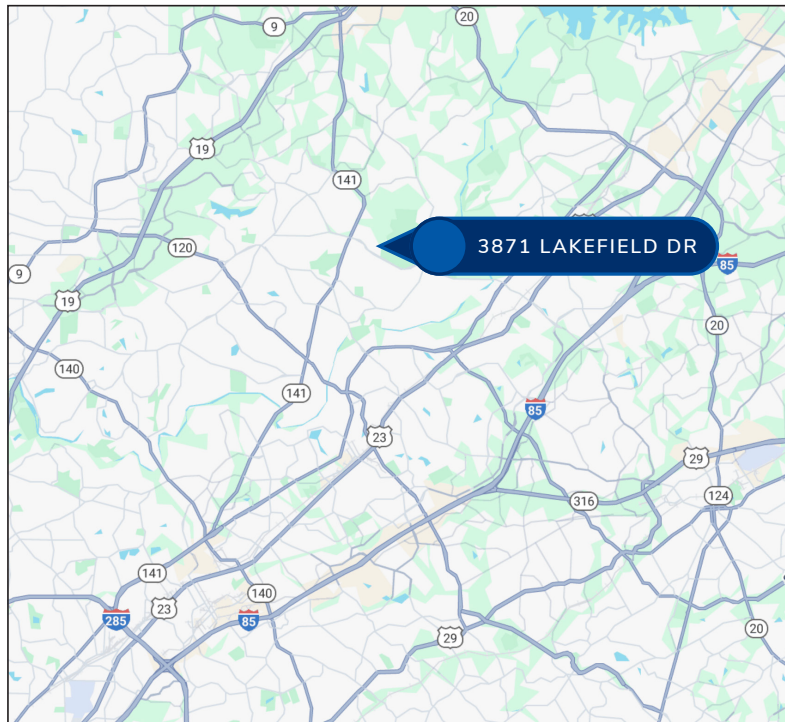
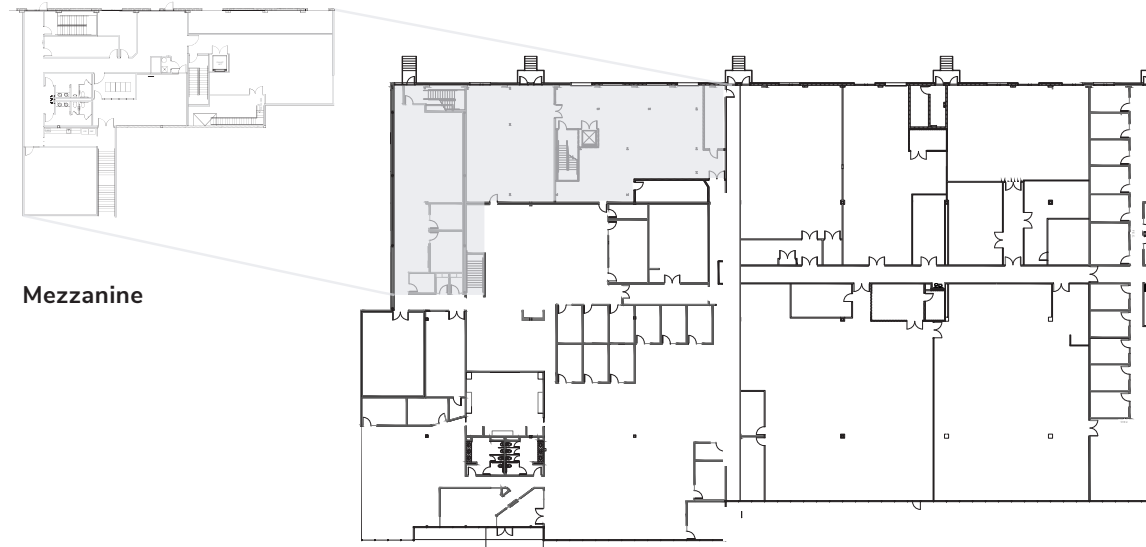
**3871 Lakefield Drive**

SUWANEE, GEORGIA 30024



# 3871 Lakefield Drive

SUWANEE, GEORGIA 30024



## ■ AVAILABILITY HIGHLIGHTS

**Building Size** 129,403 RSF

---

**Available** 55,274 RSF

---

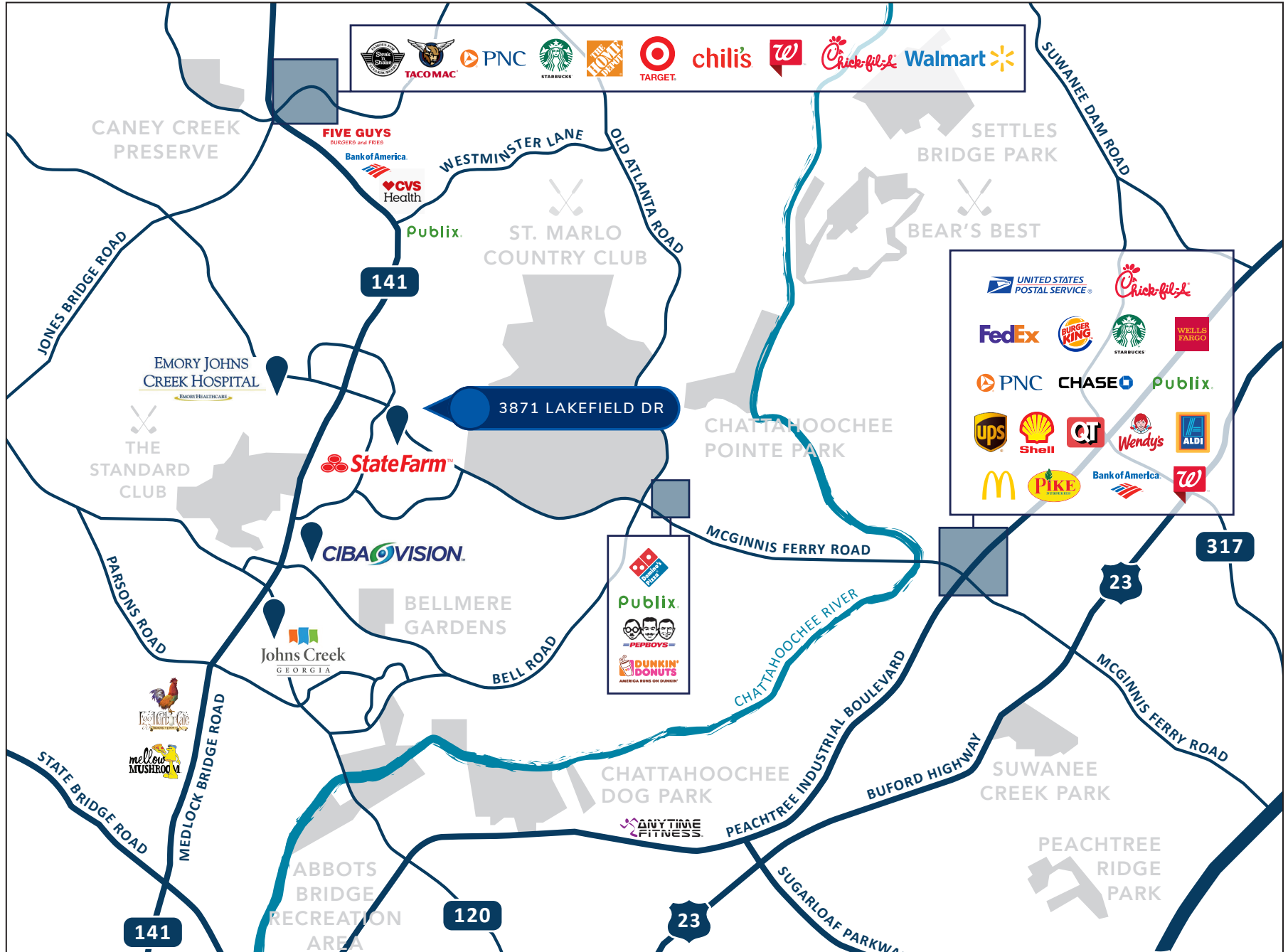
- Features**
- Above-Standard Power
  - Convenient access to Peachtree Parkway
  - 30 lunch options within a 10 minute drive
  - 4 major fitness centers within a 5 minute drive
  - Surrounded by affluent North Fulton neighborhoods
  - Up to 22' clear
- 

- Ideal Uses**
- Lab
  - Data Center
  - Light Manufacturing
  - Office



# 3871 Lakefield Drive

SUWANEE, GEORGIA 30024





# 3871 Lakefield Drive

SUWANEE, GEORGIA 30024





**STEVE DeVINNEY**

*Senior Vice President*

steve.devinney@streamrealty.com

404.915.2946

**BRAD BAYS, SIOR**

*Managing Director*

brad.bays@streamrealty.com

404.579.7761