

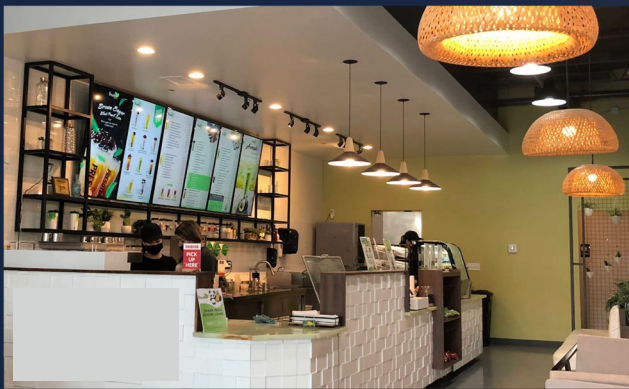
# SUITE 633

## PRICING

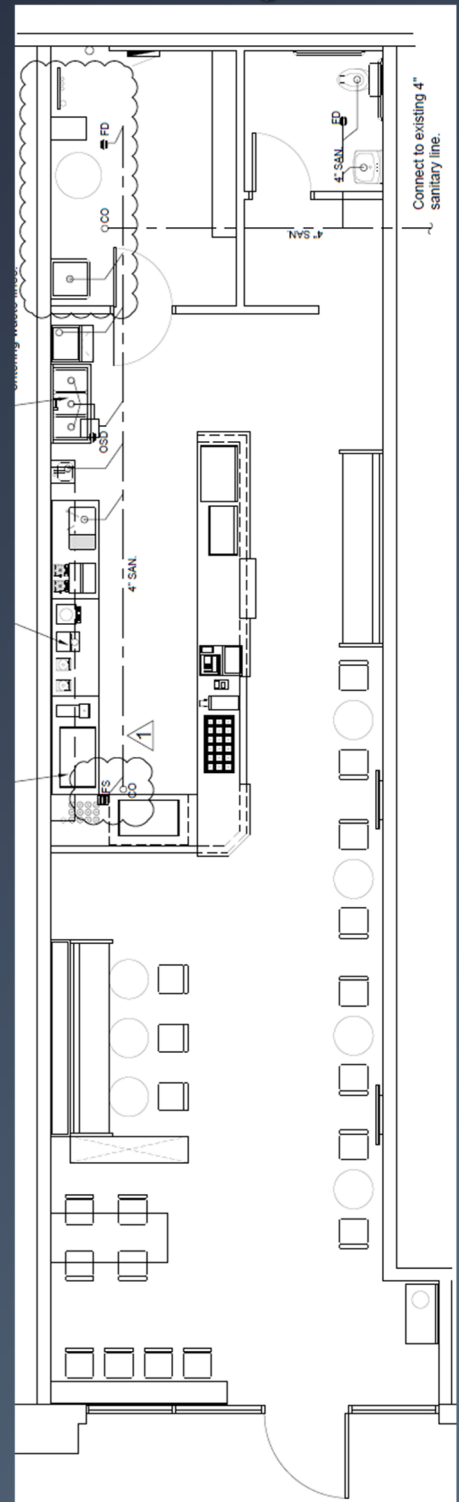
Size: 1,236 SF  
Base Rent: \$36.00 PSF/yr.  
Triple Nets: \$6.10PSF/yr.  
Total: \$4,336/mo.

## COMMENTS

- Move in Ready
- Fully build-out Restaurant
- 2% base rent escalations



## Existing Plan



Phillip Carameros (832. 937.5900) [phillip@gordonpartners.com](mailto:phillip@gordonpartners.com)  
Jenny Nguyen (409.900.2060) [jenny@gordonpartners.com](mailto:jenny@gordonpartners.com)