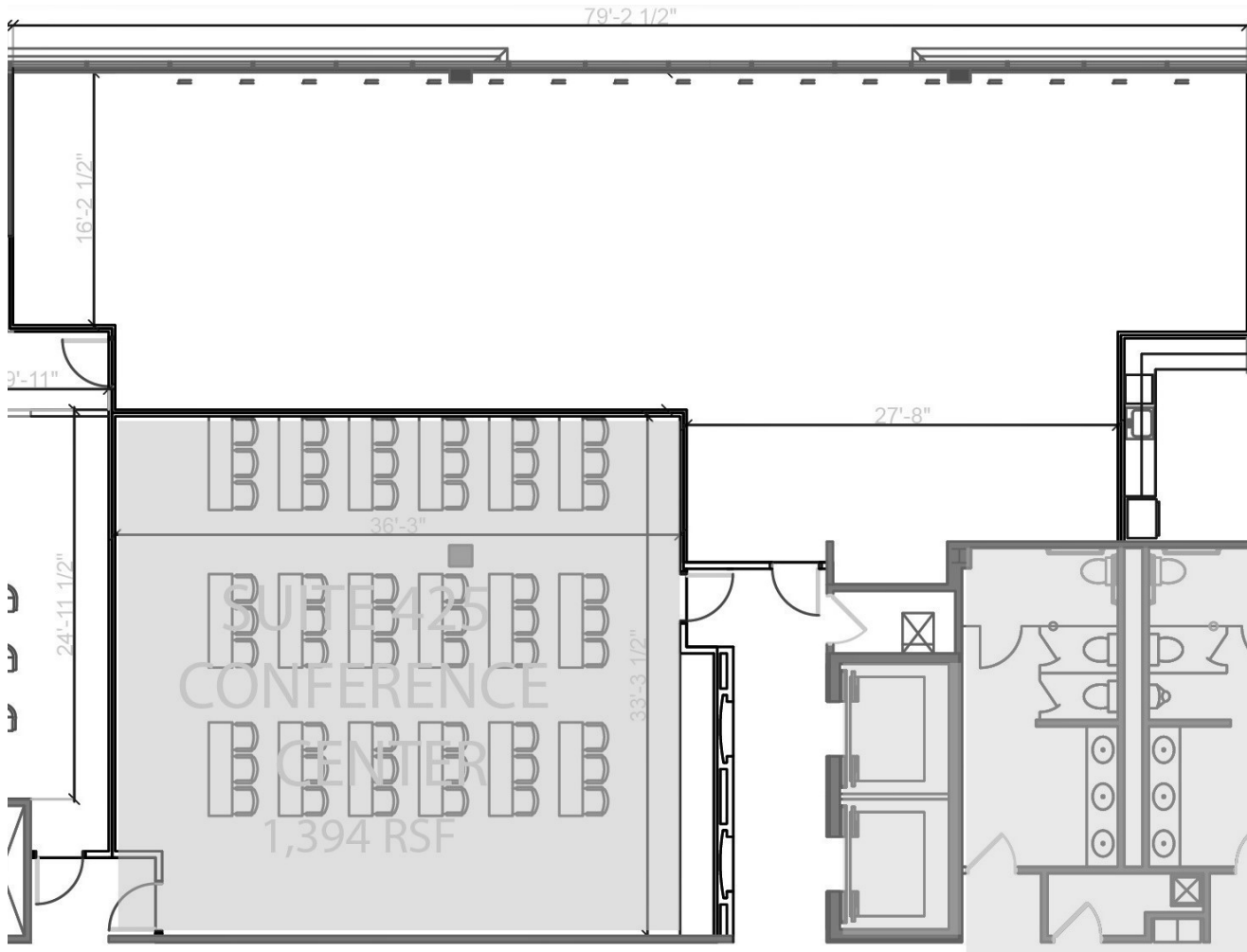


# SUITE 460 | 2,265 SF

2250 POINT BLVD \ ELGIN, IL



## SPACE NOTES

- Generous Build-Out Allowance
- Building Conference Room
- Modern Common Areas
- Convenient Access to I-90



**JOHN MILLNER**

630.480.6342

JMillner@VersaRES.com

**RYAN MOEN**

630.480.6346

RMoen@VersaRES.com

**1 MID AMERICA PLAZA, 3RD FLOOR  
OAKBROOK TERRACE, IL 60181  
630.480.6413**

EXCLUSIVELY LISTED BY

**VERSA**  
REAL ESTATE SERVICES