

19558 KELLY ROAD  
HARPER WOODS, MICHIGAN

RETAIL FOR LEASE  
2,200 Square Feet Available



**SIGNATURE  
ASSOCIATES**  
KNOW SIGNATURE | KNOW RESULTS



## PROPERTY FEATURES

- 2,200 square feet available
- 12' clear height
- Zoned C-2
- Restaurant/Retail space
- Lease Rate: \$1,000/month G + U



For more information, please contact:

**JOE STACK**  
(248) 359 0615  
jstack@signatureassociates.com

**SIGNATURE ASSOCIATES**  
One Towne Square, Suite 1200  
Southfield, MI 48076  
www.signatureassociates.com

# 19558 Kelly Road – Harper Woods, Michigan

Retail For Lease

2,200  
Square Feet  
AVAILABLE

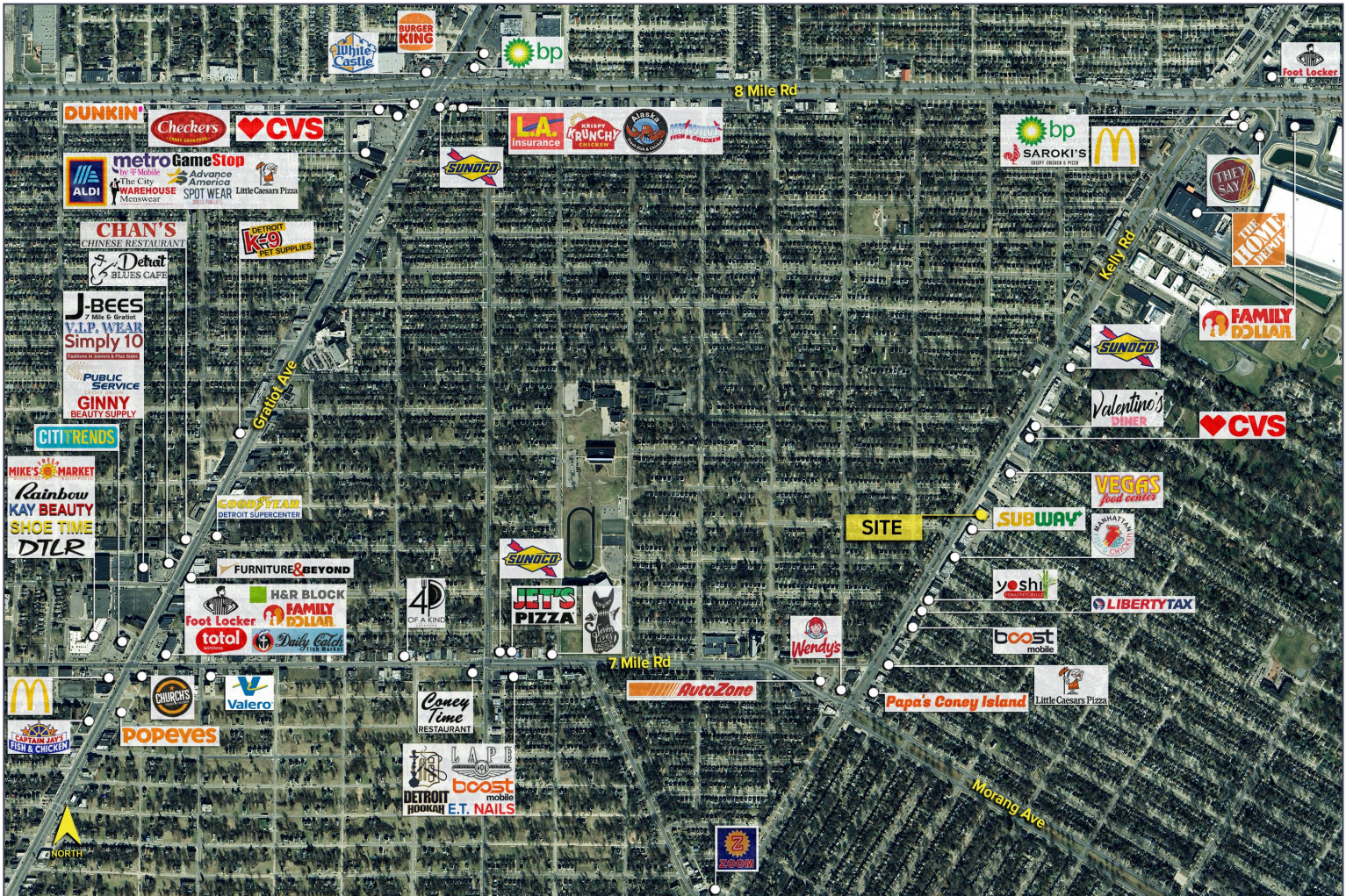


## DEMOGRAPHICS

	POPULATION	MED. HH INCOME
1 MILE	22,330	\$45,548
3 MILE	164,042	\$46,443
5 MILE	333,437	\$65,128

## TRAFFIC COUNTS (TWO-WAY)

9,412	Kelly Rd. SW of Moross Rd.
14,724	Kelly Rd. NE of Moross Rd.
9,822	Moross Rd. NW of Kelly Rd.
15,080	Moross Rd. SE of Kelly Rd.



For more information, please contact:

**JOE STACK**

(248) 359 0615

[jstack@signatureassociates.com](mailto:jstack@signatureassociates.com)

**SIGNATURE ASSOCIATES**

One Towne Square, Suite 1200

Southfield, MI 48076

[www.signatureassociates.com](http://www.signatureassociates.com)