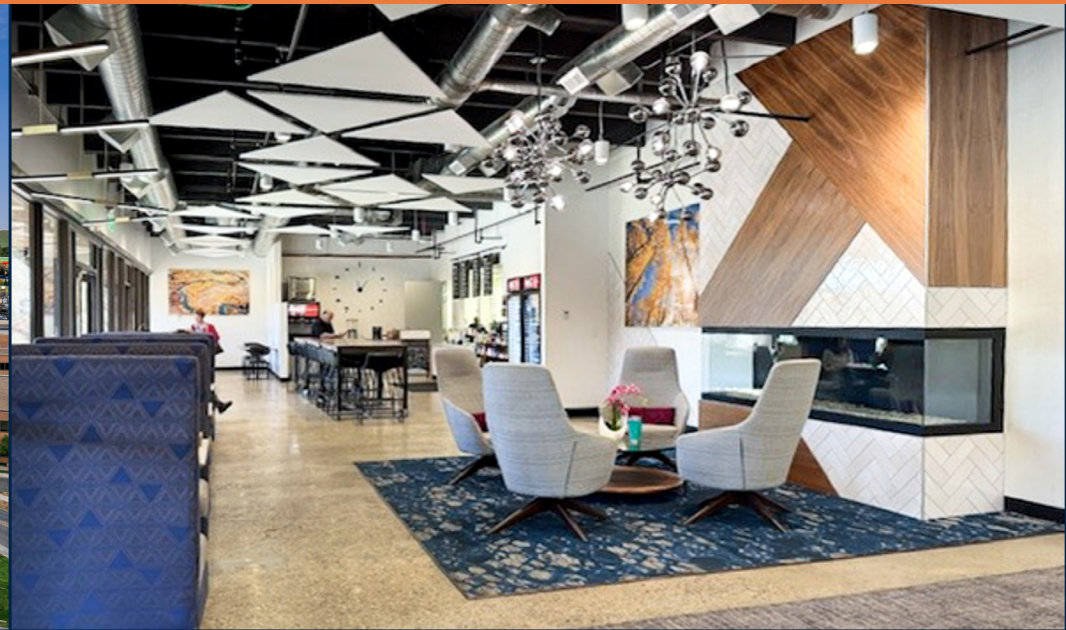


# 4500 S Cherry Creek Drive

Denver, CO 80246

4,693 SF OFFICE SUBLEASE - \$20 PSF

TERM 10/2026 • FURNITURE INCLUDED • WILL SUBDIVIDE • SUBLANDLORD MOTIVATED



For leasing information please contact:

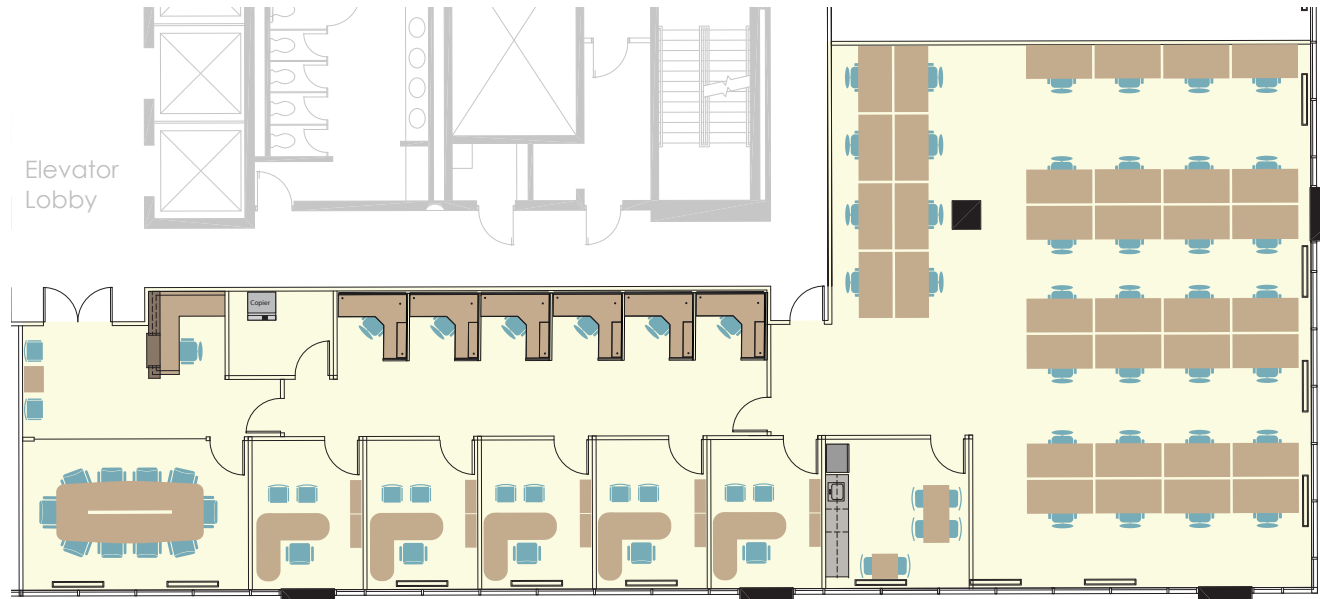
Michelle Gertzman | 720.743.6399  
mgertzman@premisescommercial.com

Matt Smith | 303.996.8460  
msmith@premisescommercial.com

**PREMISES**  
PREMISES COMMERCIAL REAL ESTATE LLC

# 4500 S Cherry Creek Drive

Denver, CO 80246



\*Available furniture to be verified by Sublessor

4,693 SF sublease opportunity with elevator lobby entrance and great views. 5 offices, reception, conference room, kitchen/break room, and open space with cubicles. Includes use of existing furniture during the remaining term.

## PROPERTY HIGHLIGHTS:

- Newly remodeled lobby and common areas
- Upgraded fitness center with showers
- On-site deli
- Tenant lounge

**Great value at \$20 PSF - Furniture Included**  
**Term 10/2026 - Can be subdivided**

- 3.5:1,000 parking
- Close proximity to Cherry Creek shopping and dining district, hotels, banking and public transit
- Bike storage

## SUITE 500 - 4,693 SF SUBLEASE

For leasing information please contact:

**Michelle Gertzman | 720.743.6399**  
**mgertzman@premisescommercial.com**

**Matt Smith | 303.996.8460**  
**msmith@premisescommercial.com**

**PREMISES**  
PREMISES COMMERCIAL REAL ESTATE LLC  
**WWW.PREMISESCOMMERCIAL.COM**

The information contained herein, while not guaranteed, has been secured from sources we believe to be reliable. Different brokerage relationships are available which include Seller/Landlord Agency, Buyer/Tenant Agency and Transaction Broker. Premises Commercial Real Estate is acting in this capacity as Landlord's/Sublessor's Agent, unless otherwise agreed, and owes its fiduciary allegiance to Landlord/Sublessor as defined by Colorado Real Estate Commission.