



## OFFICE SPACE FOR LEASE

**1500 E Little Creek Rd**  
Norfolk, VA 23518



### Contact Us:

#### REBECCA BARRICKLOW

SENIOR VICE PRESIDENT  
D: 804.796.0516 | M: 804.399.4762  
rbarricklow@rangecommercial.com

#### BRANTLEY HATHAWAY, JR

SENIOR ASSOCIATE  
D: 804.736.0463 | M: 804.335.5266  
bhathawayjr@rangecommercial.com

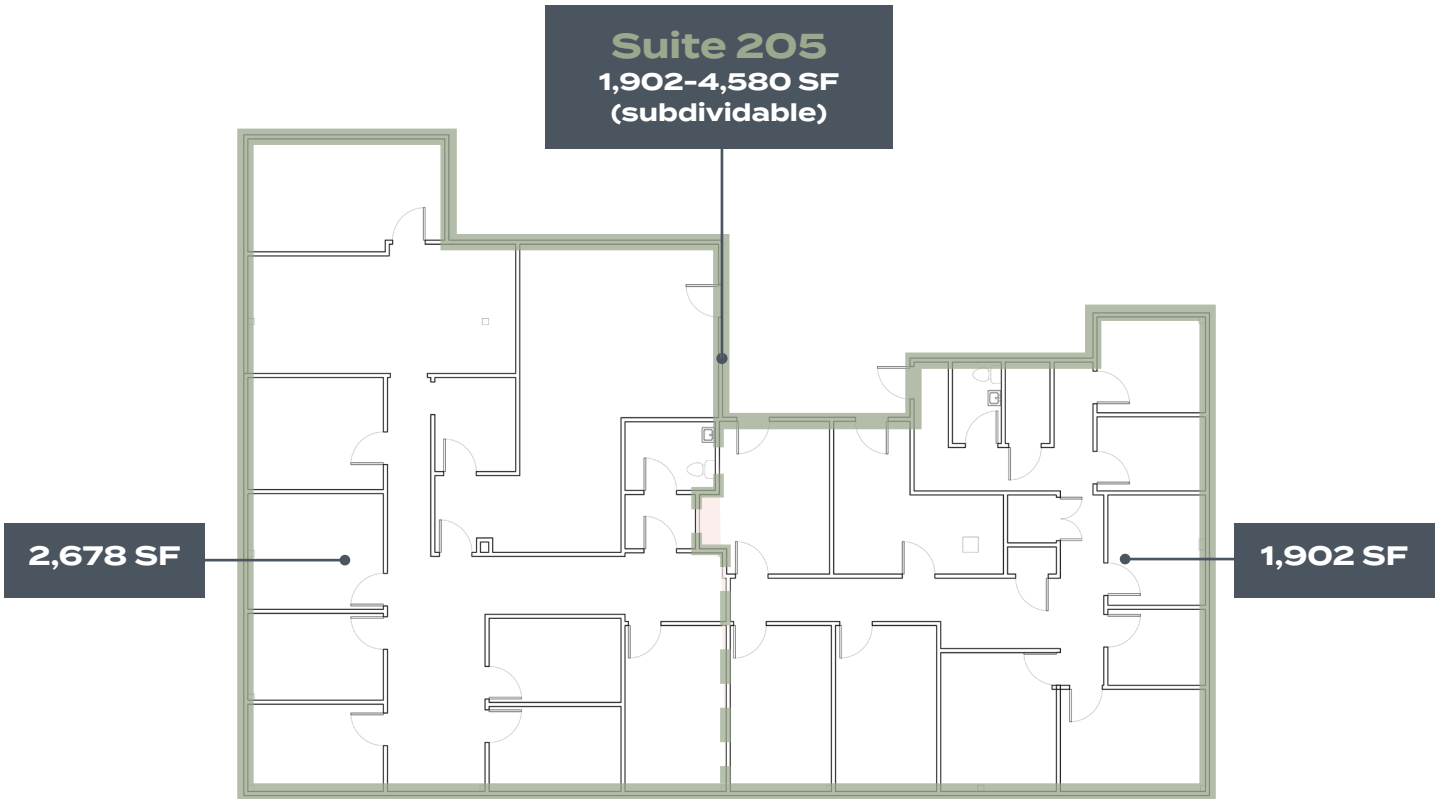
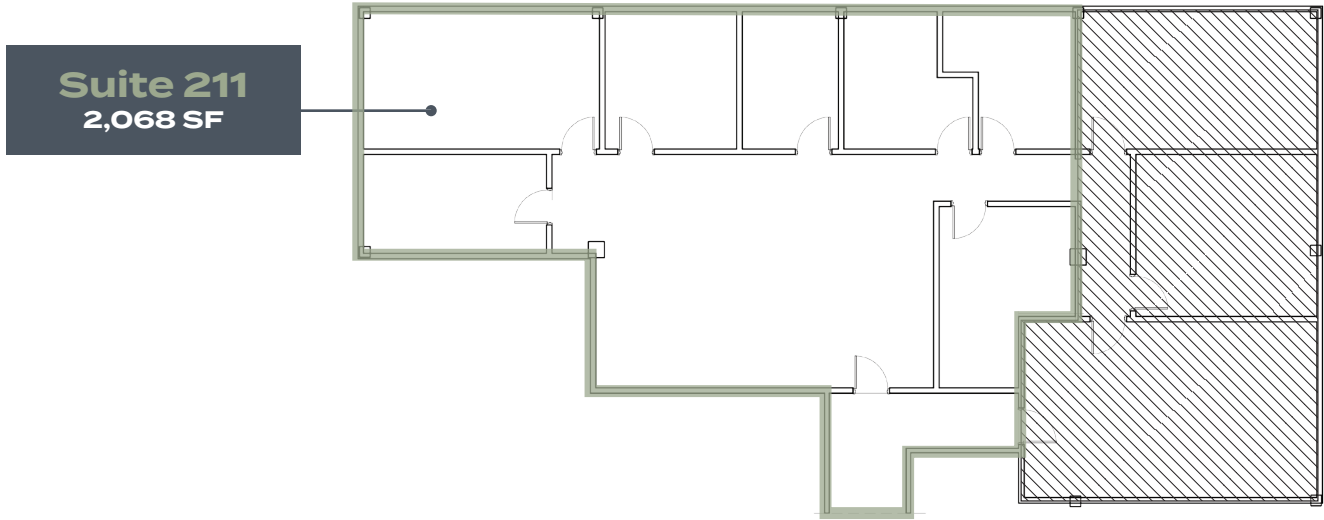
rangecommercial.com  
804.796.0500  
7200 Glen Forest Drive, Suite 100  
Richmond, VA 23226

### BUILDING HIGHLIGHTS

- Three story office building totaling 25,545 SF
- Join The Pendleton Law Team
- Available:
  - Suite 211 - 2,068 SF
  - Suite 205 - 1,902-4,580 SF, subdividable
- Flexible lease terms and rates
- Parking Ratio: 4/1,000 SF, covered and surface parking available
- Building renovations including new signage + paint completed in late 2025
- New building cameras are being installed in 2026
- Centrally located with easy access to I-64

Copyright ©2026 Range Commercial Partners. Information herein has been obtained from sources deemed reliable, however its accuracy cannot be guaranteed. The user is required to conduct their own due diligence and verification.

# FLOOR PLANS



# OFFICE BUILDING FOR LEASE | NORFOLK, VA

## Area Map



### Contact Us

**REBECCA BARRICKLOW**  
SENIOR VICE PRESIDENT  
D: 804.796.0516 | C: 804.399.4762  
rbarricklow@rangecommercial.com

**BRANTLEY HATHAWAY, JR**  
SENIOR ASSOCIATE  
D: 804.736.0463 | C: 804.335.5266  
bhathawayjr@rangecommercial.com

