

# 22619 Pacific Coast Highway

Malibu, California



**CAROL ROTH**

PRESIDENT

COMMERCIAL REALTY PARTNERS

310.285.0800

[CRoth@CommercialRealtyPartners.com](mailto:CRoth@CommercialRealtyPartners.com)

License #: 01344182

*Although all information furnished regarding the property is from sources deemed reliable, such information has not been verified and no express representation is made nor is any to be implied as to the accuracy thereof and it is submitted subject to errors, omissions, change of price, rental or other conditions, or withdrawal without notice.*

# Sublease Opportunity

**22619**  
Pacific Coast Highway  
Malibu, California

Availability: Suite B260  
6,443 RSF

Asking Rate: Negotiable

Term: Expires July 2026

Parking: 10 spaces at the  
prevailing rate



**CAROL ROTH**

PRESIDENT

COMMERCIAL REALTY PARTNERS

310.285.0800

[CRoth@CommercialRealtyPartners.com](mailto:CRoth@CommercialRealtyPartners.com)

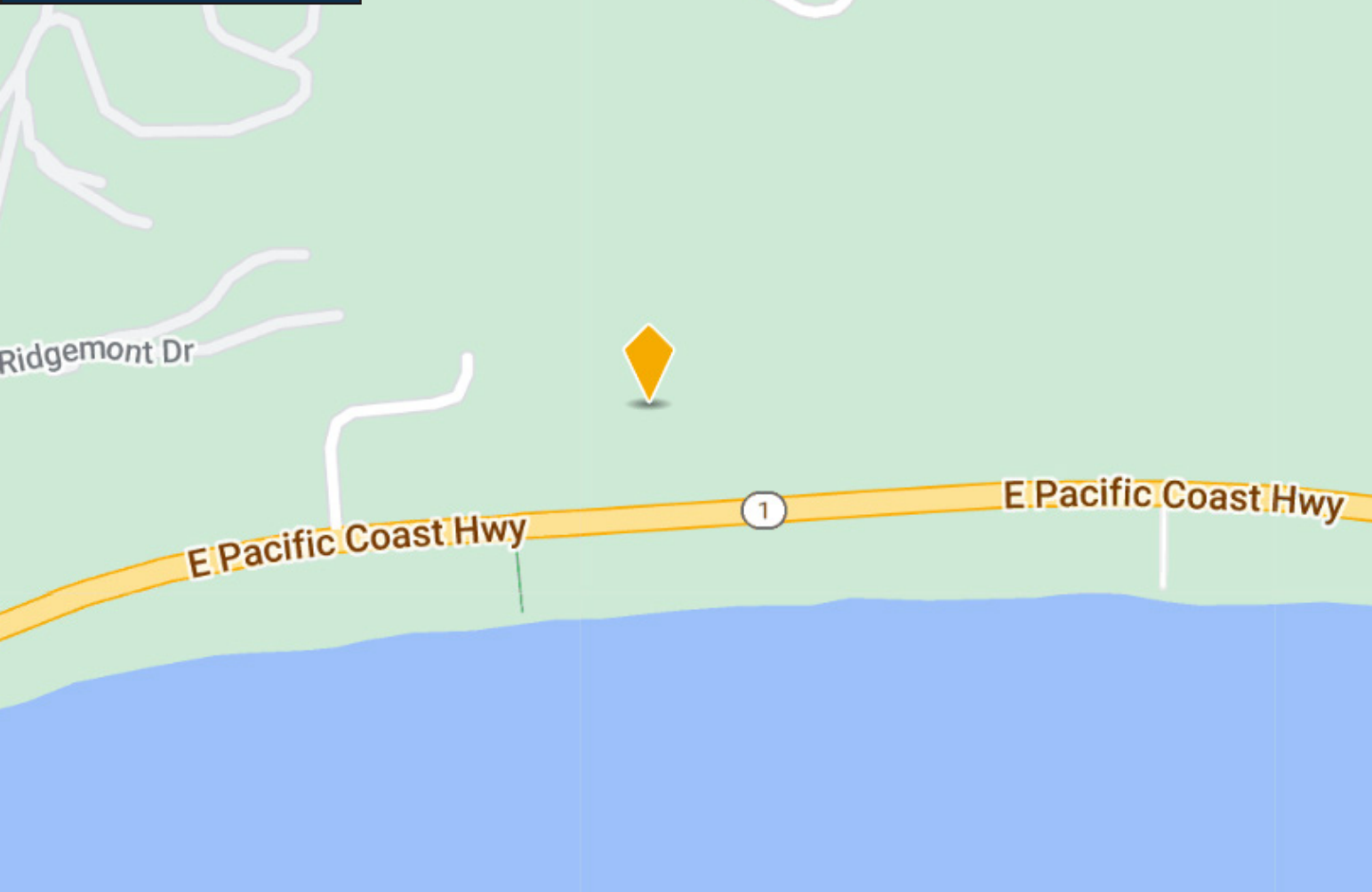
License #: 01344182

*Although all information furnished regarding the property is from sources deemed reliable, such information has not been verified and no express representation is made nor is any to be implied as to the accuracy thereof and it is submitted subject to errors, omissions, change of price, rental or other conditions, or withdrawal without notice.*

# 22619

Pacific Coast Highway

Malibu, California



## Highlights & Location

- Located in the heart of Malibu.
- Unparalleled views of the ocean.
- Efficient floor plan with a combination of private offices and open area.
- Operable windows facing the ocean.
- Huge ocean view patios.
- Ample onsite parking for tenants and visitors
- Across the street from Nobu and Soho House Malibu.
- Close proximity to Malibu Country Mart, Cross Creek retail and restaurant establishments, and Malibu Lumber.
- Easy access to downtown Santa Monica and other westside submarkets



**CAROL ROTH**

PRESIDENT

COMMERCIAL REALTY PARTNERS

310.285.0800

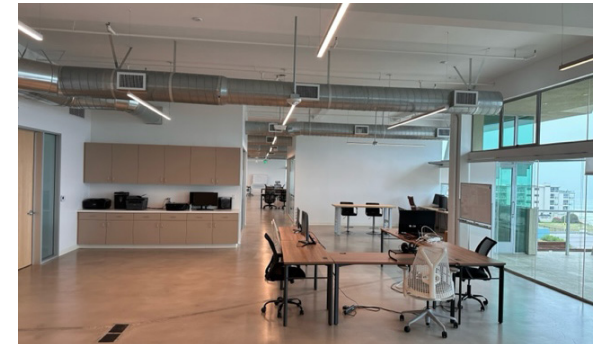
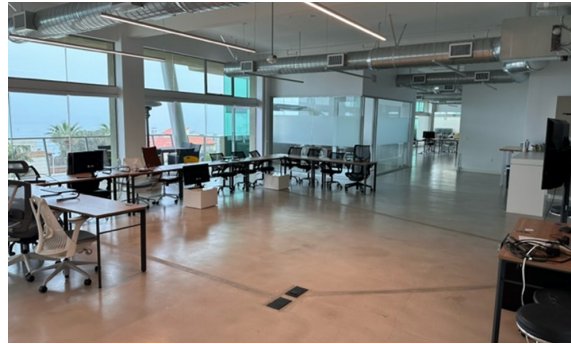
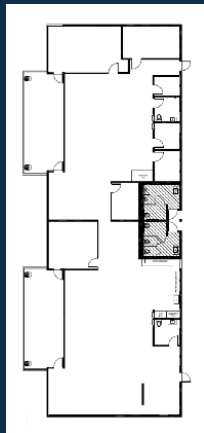
CRoth@CommercialRealtyPartners.com

License #: 01344182

*Although all information furnished regarding the property is from sources deemed reliable, such information has not been verified and no express representation is made nor is any to be implied as to the accuracy thereof and it is submitted subject to errors, omissions, change of price, rental or other conditions, or withdrawal without notice.*

# Photos & Floor Plan

- 1 Open work space with ocean views
- 2 Outdoor patio facing the ocean
- 3 Collaborative work area
- 4 Conference Room
- 5 Open break area
- 6 Open space



**CAROL ROTH**  
PRESIDENT  
COMMERCIAL REALTY PARTNERS  
310.285.0800  
CRoth@CommercialRealtyPartners.com  
License #: 01344182

*Although all information furnished regarding the property is from sources deemed reliable, such information has not been verified and no express representation is made nor is any to be implied as to the accuracy thereof and it is submitted subject to errors, omissions, change of price, rental or other conditions, or withdrawal without notice.*