

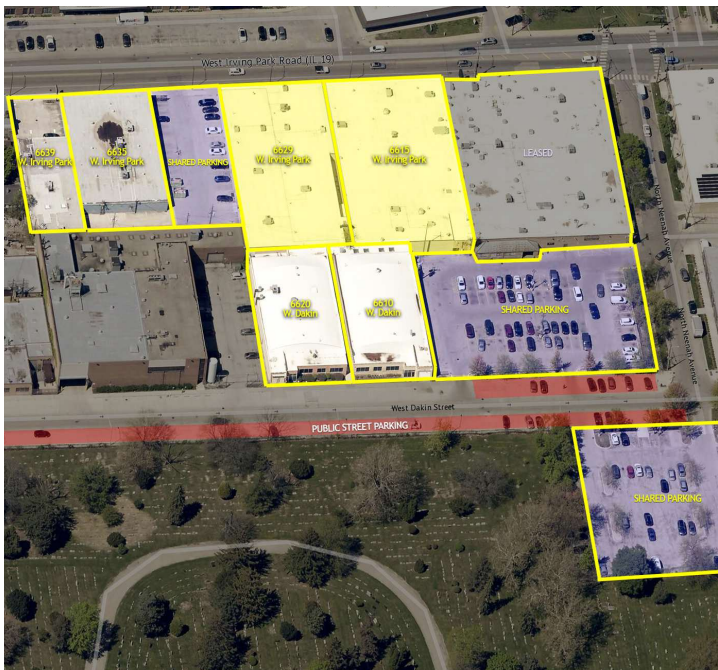
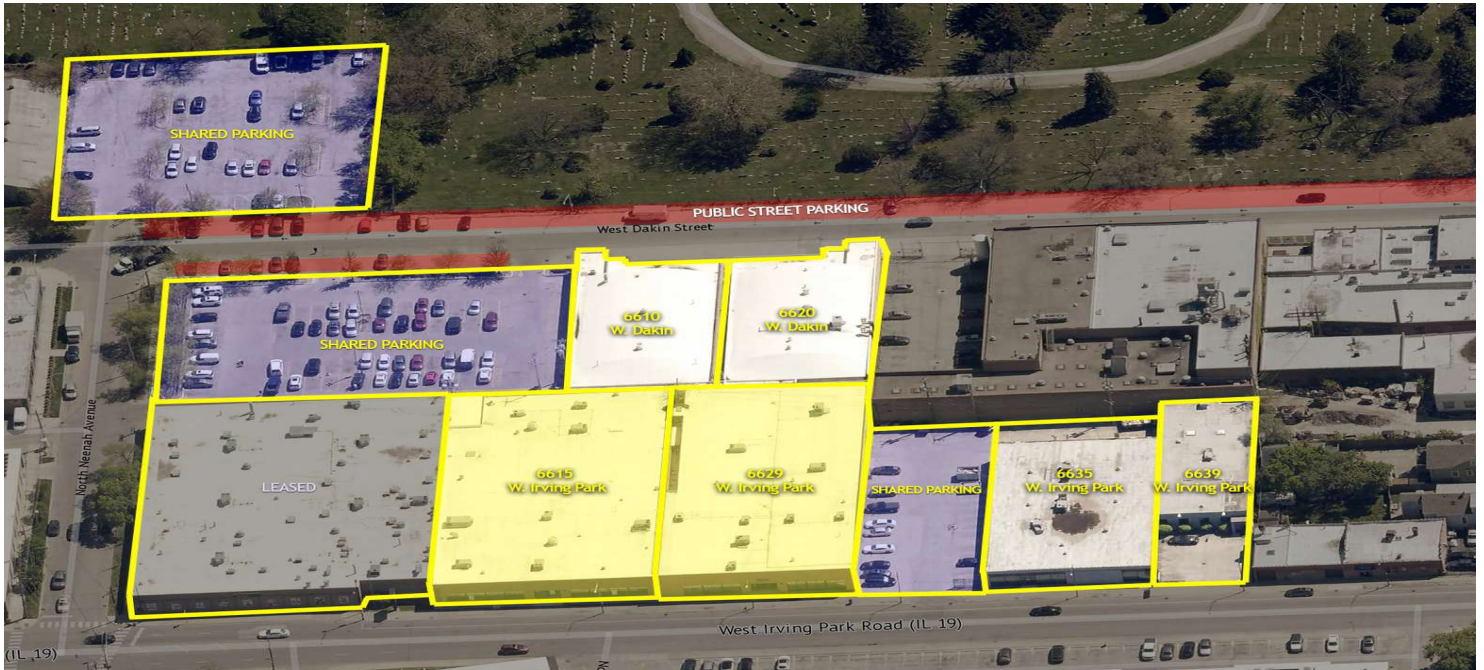
44,882 SF

Industrial/Commercial Property For Lease



BROWN
COMMERCIAL GROUP, INC.

6615-6629 W. IRVING PARK RD., CHICAGO, IL 60634



6615-6629 W. IRVING PARK RD., CHICAGO

- 44,882 SF
- 10% ± - 50% ± (based on current configuration)
- 14' - 16'6" Clear Height
- 2 Drive-in Doors
- 480 Volt, 3 Phase Power
- 100% Air Conditioned
- Kitchenette
- Irving Park Road Signage
- Taxes: \$3.95 SF
- CAM: \$1.65 SF
- Lease Rate: Subject to Offer
- Available Immediately

COLLIN TYRRELL

847.758.9200 x303

CTYRRELL@BROWNCOMMERCIAL.COM

PAT CROWLEY

847.758.9200 x310

PCROWLEY@BROWNCOMMERCIAL.COM

DAN BROWN, SIOR

847.758.9200 x302

DBROWN@BROWNCOMMERCIAL.COM

BROWNCOMMERCIAL.COM

//

1400 E. HIGGINS RD. SUITE A, ELK GROVE VILLAGE, IL 60007

//

847.758.9200

No warranties or representations is made as to the accuracy of the foregoing information. Terms and availability are subject to changes or withdrawal without notice

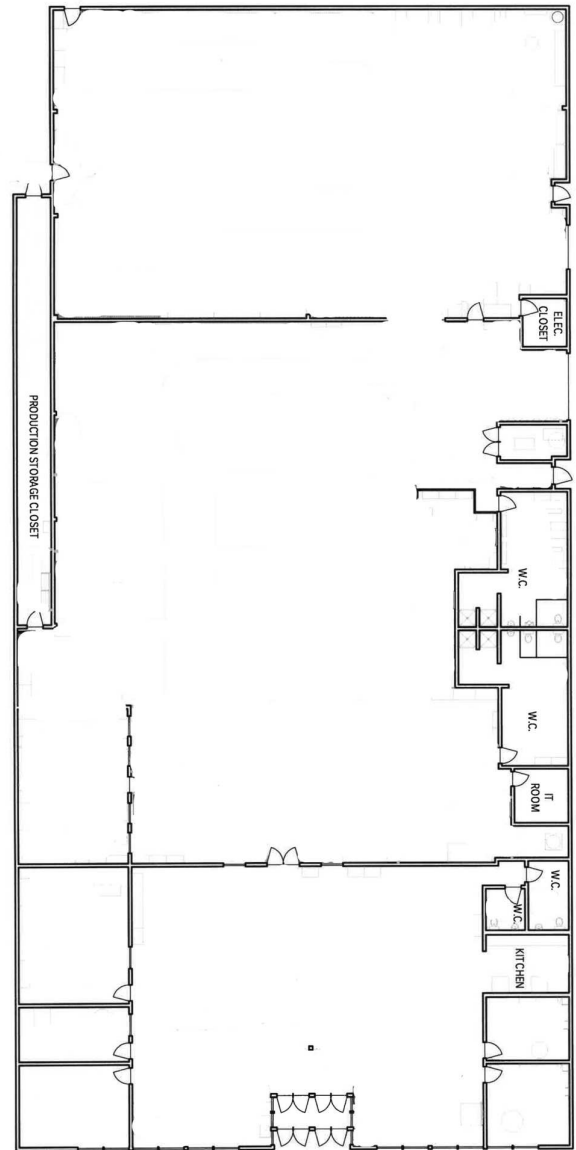
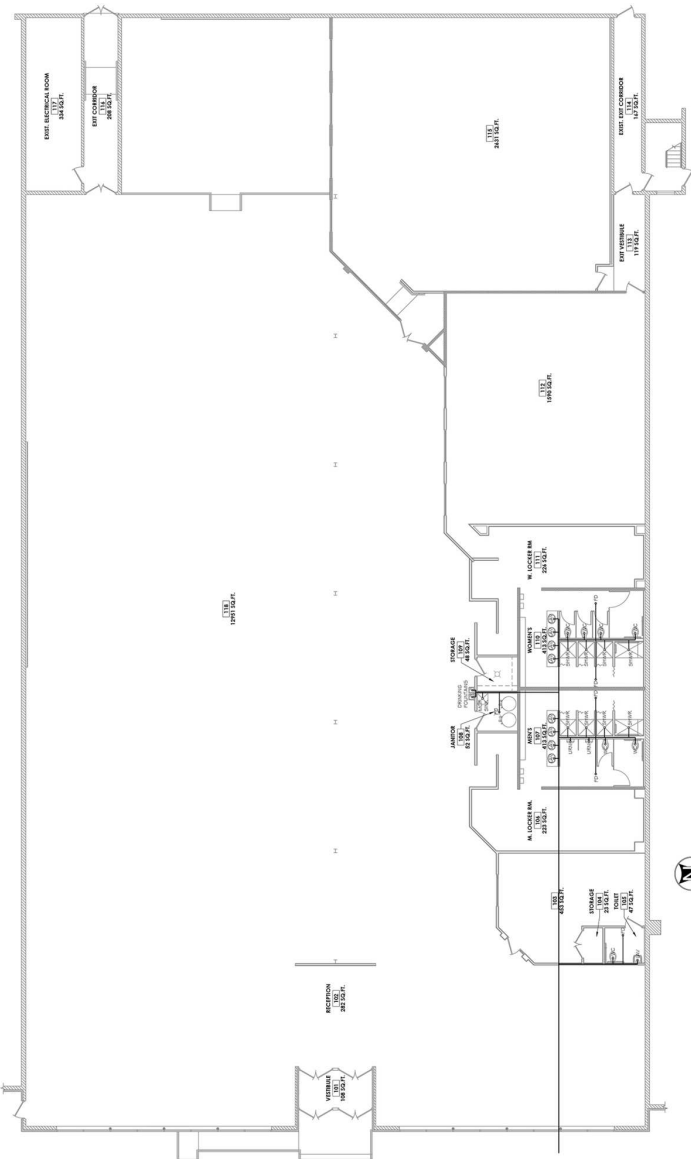
44,882 SF

Industrial/Commercial Property For Lease



BROWN
COMMERCIAL GROUP, INC.

6615-6629 W. IRVING PARK RD., CHICAGO, IL 60634



6615 W. IRVING PARK RD.

6629 W. IRVING PARK RD.

COLLIN TYRRELL

847.758.9200 x303

CTYRRELL@BROWNCOMMERCIAL.COM

PAT CROWLEY

847.758.9200 x310

PCROWLEY@BROWNCOMMERCIAL.COM

DAN BROWN, SIOR

847.758.9200 x302

DBROWN@BROWNCOMMERCIAL.COM

BROWNCOMMERCIAL.COM

// 1400 E. HIGGINS RD. SUITE A, ELK GROVE VILLAGE, IL 60007

// 847.758.9200

No warranties or representations is made as to the accuracy of the foregoing information. Terms and availability are subject to changes or withdrawal without notice