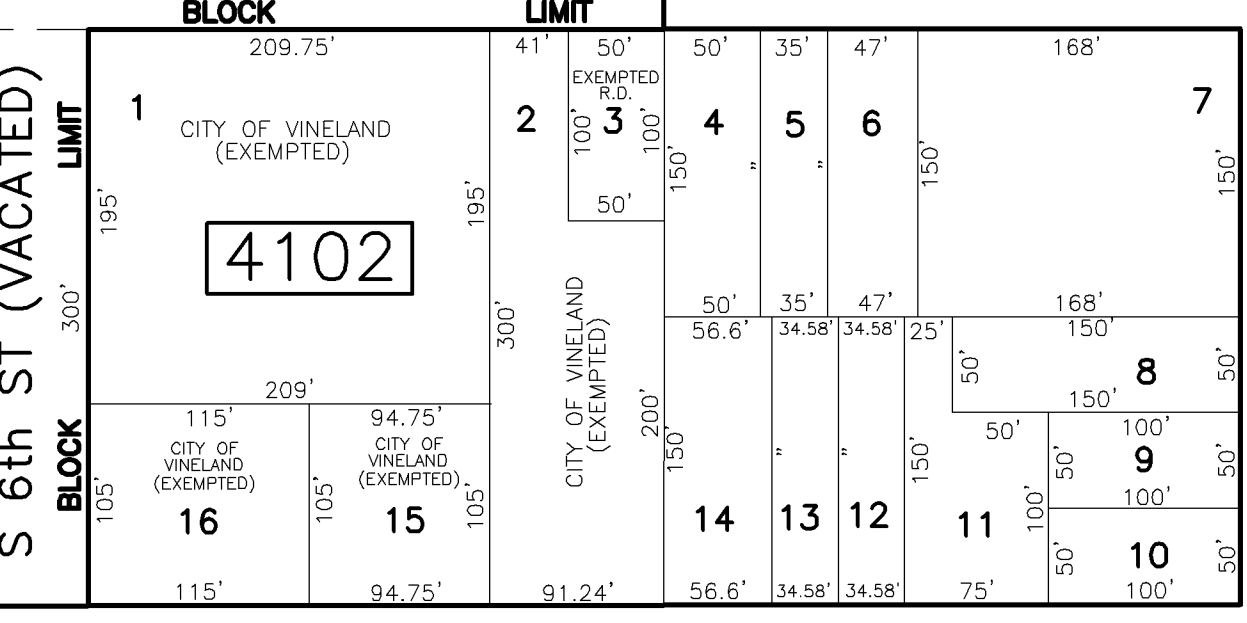
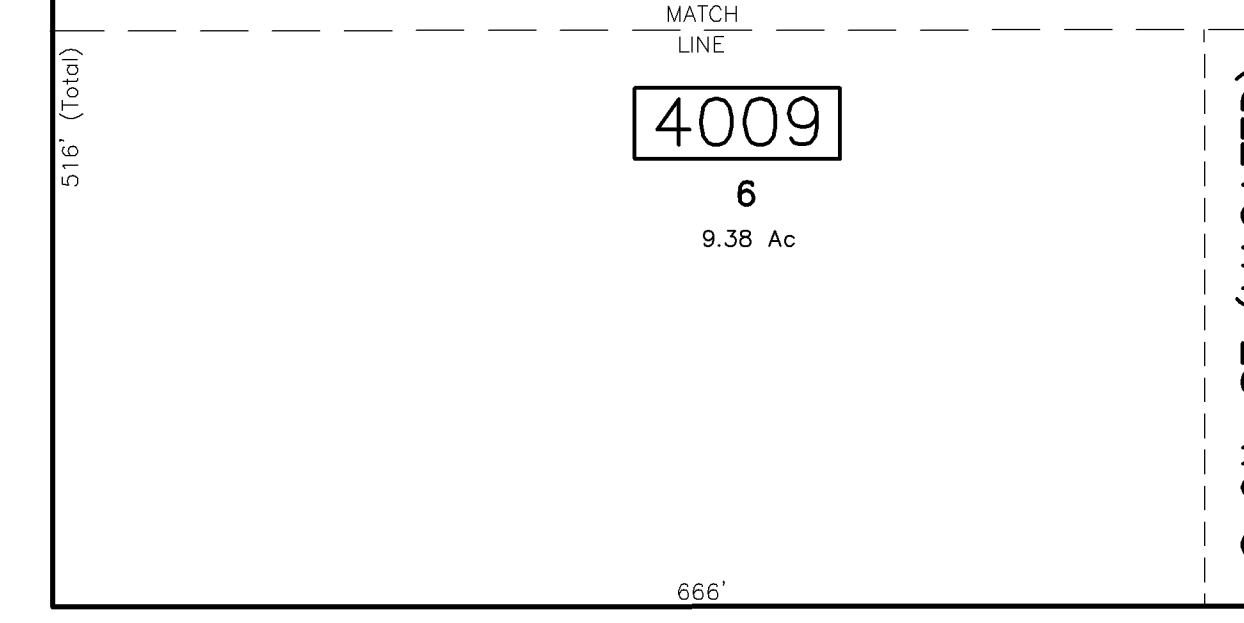


SHEET 40

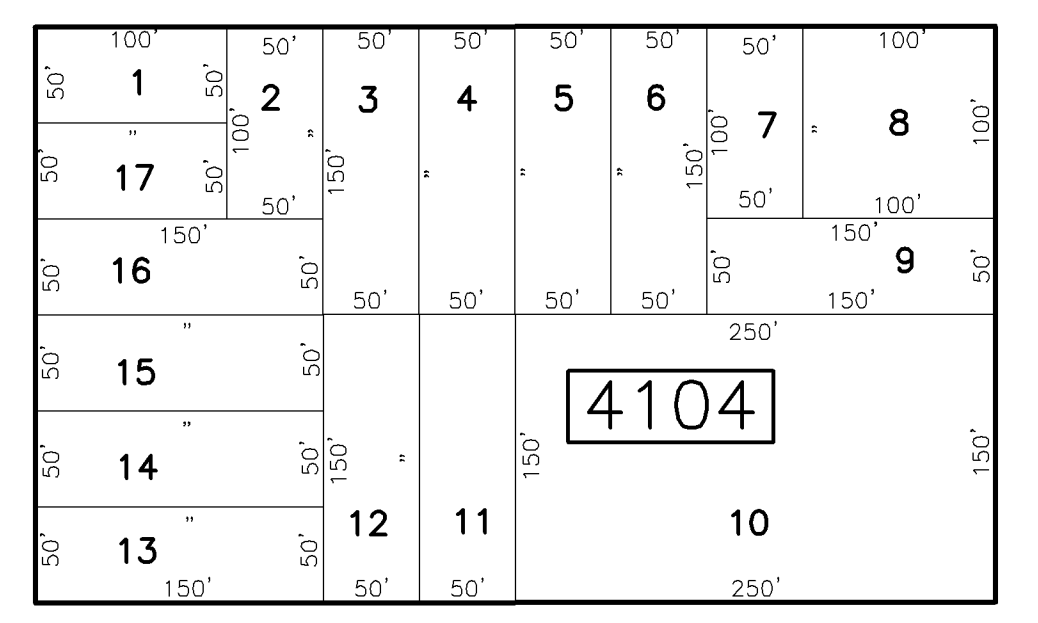
REVISIONS		
DATE	BY	LIC. NO.
OCT 22, 2002	ARH (COA# 246A27973300)	17775
JUL 14, 2003	ARH (COA# 246A27973300)	17775
AUG 25, 2004	ENGINEERING	26254
FEB 3, 2006	ARH (COA# 246A27973300)	17775
OCT 24, 2008	JOSEPH UCCIFERRI	36284
DEC 10, 2008	JOSEPH UCCIFERRI	36284
DEC 19, 2008	JOSEPH UCCIFERRI	36284
MAY 11, 2012	JOSEPH UCCIFERRI	36284
NOV 25, 2013	JOSEPH UCCIFERRI	36284
DEC 15, 2014	JOSEPH UCCIFERRI	36284

W. MONTROSE ST.

E. MONTROSE ST. (VACATED)

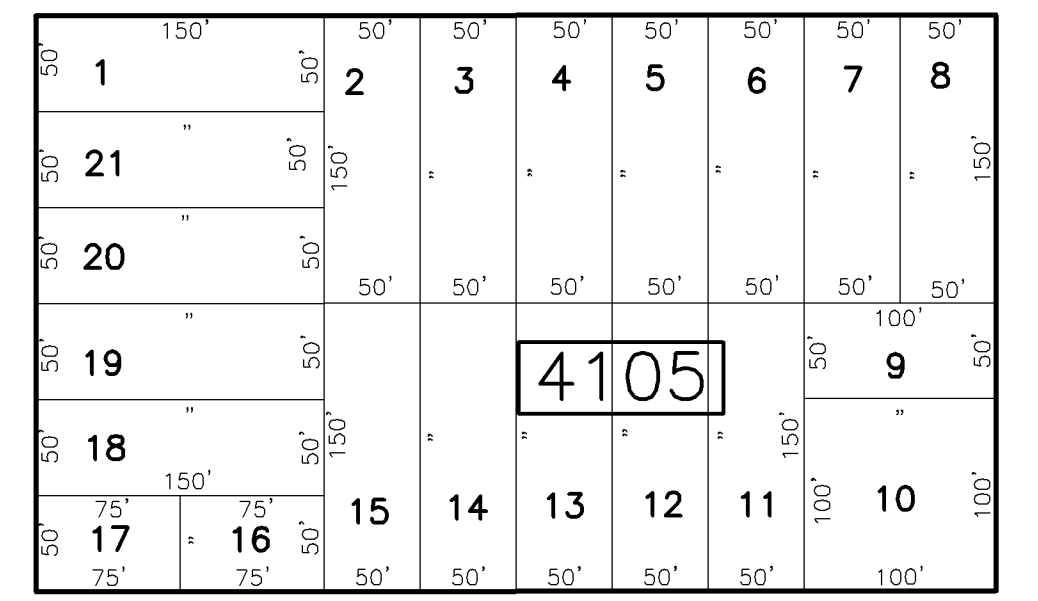
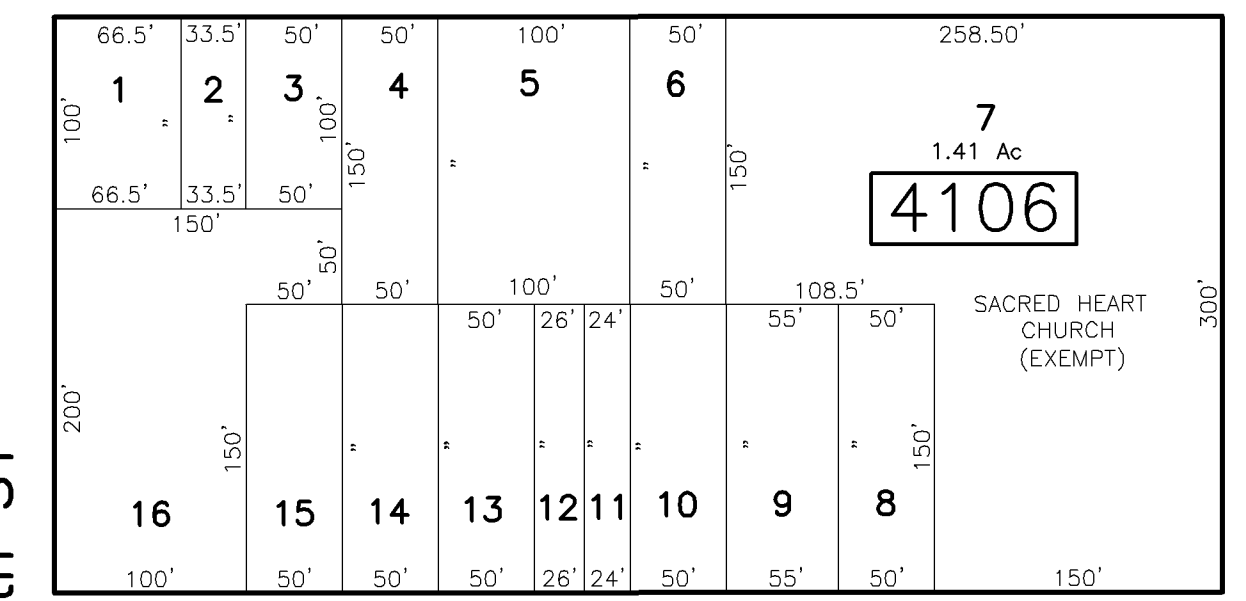
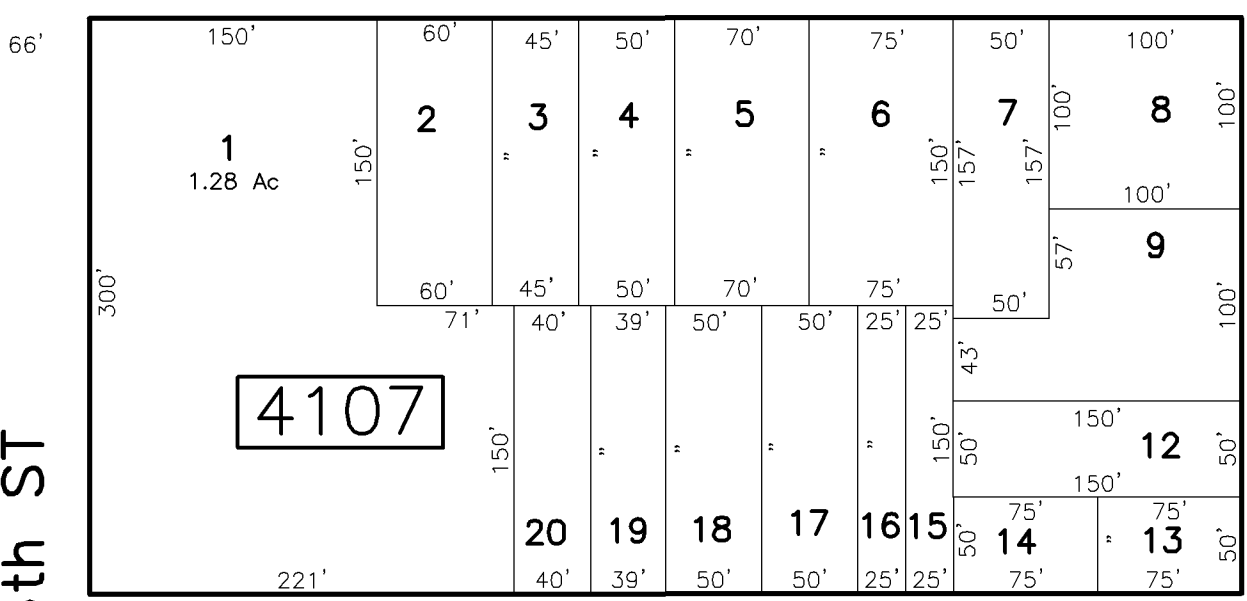
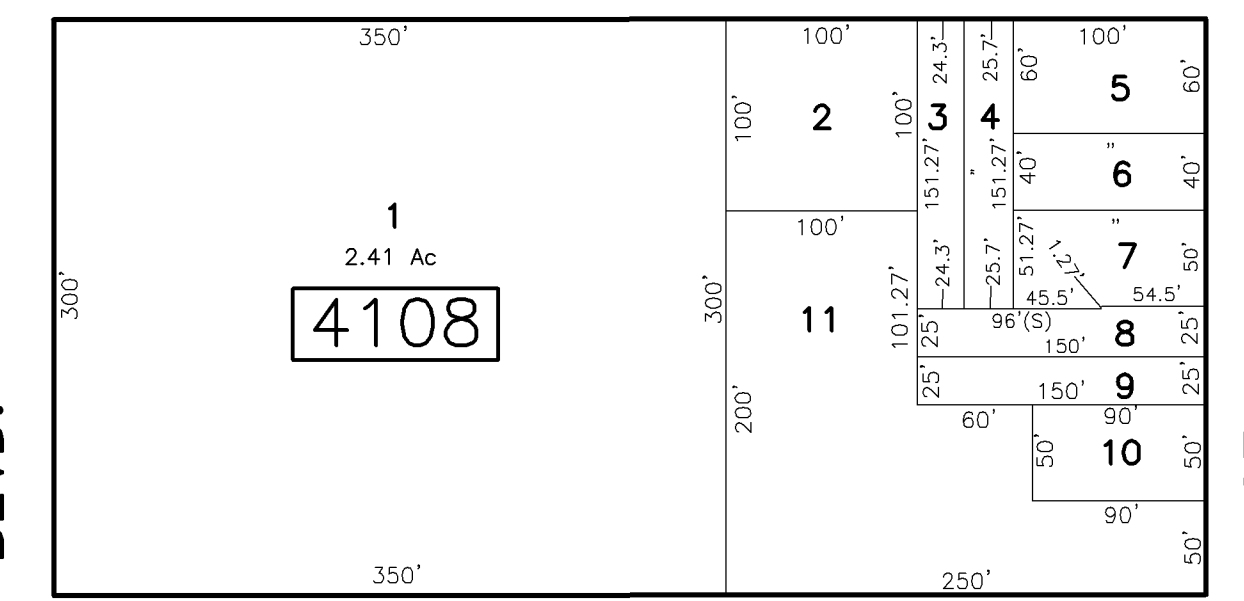


E. MONTROSE ST.



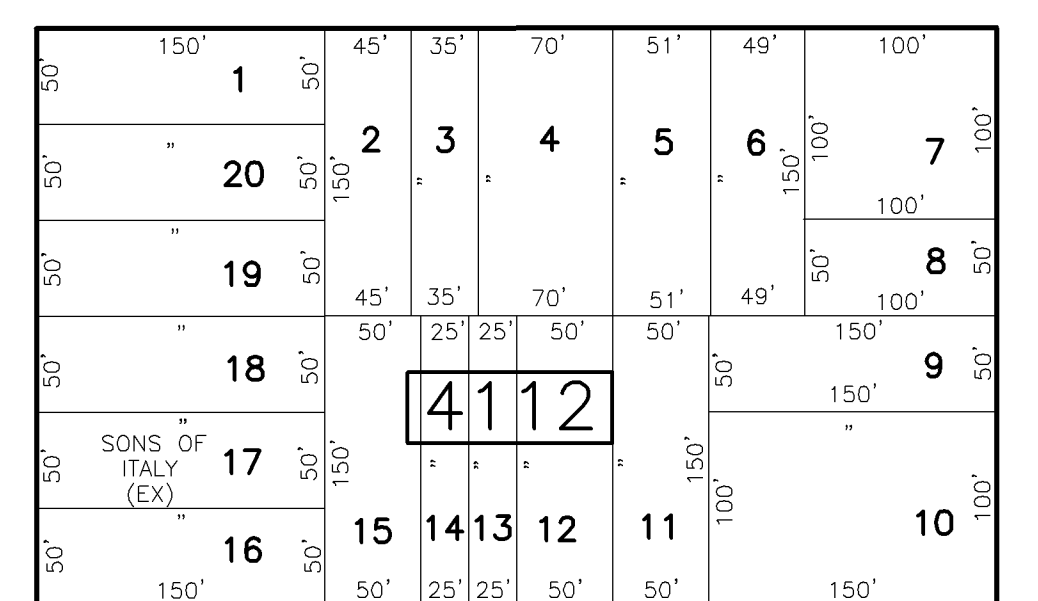
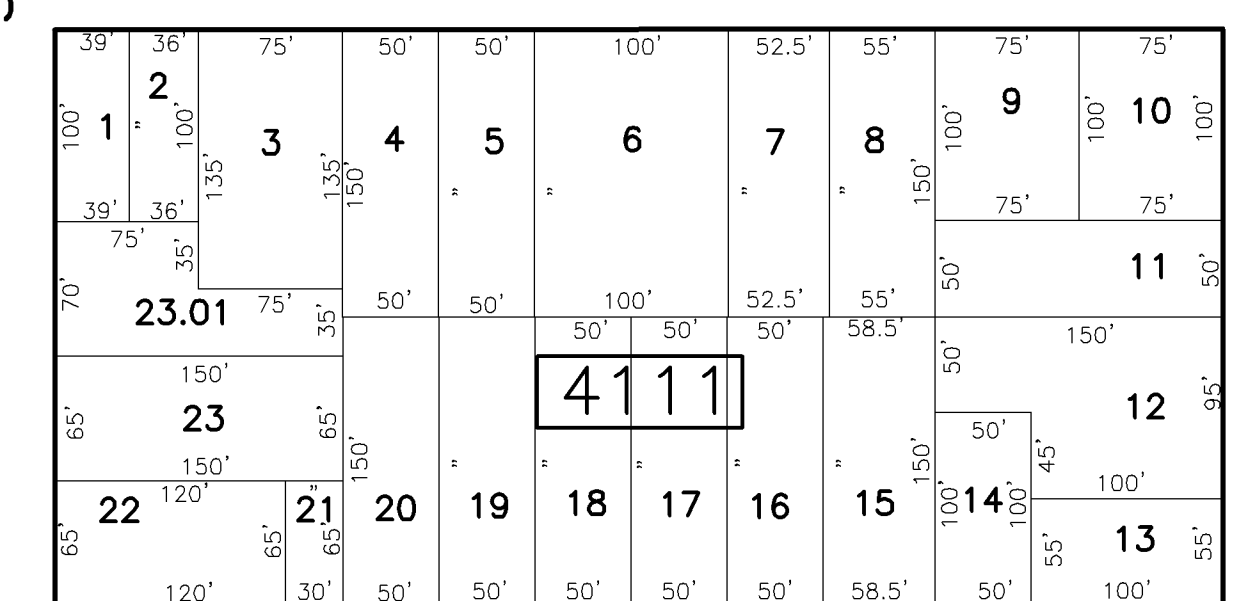
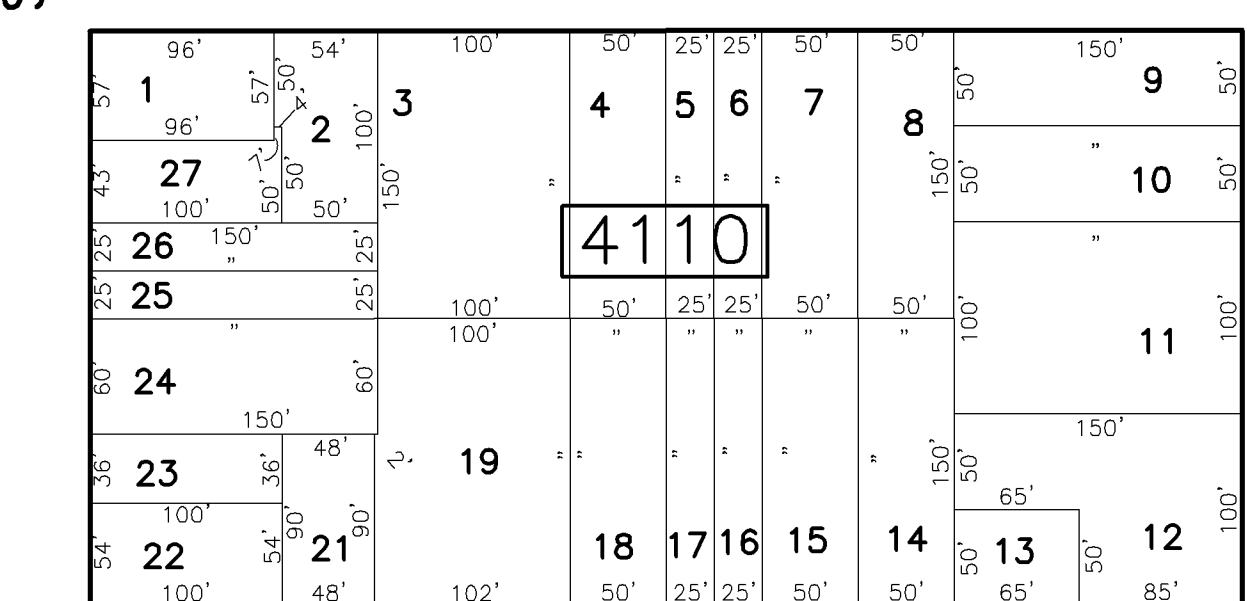
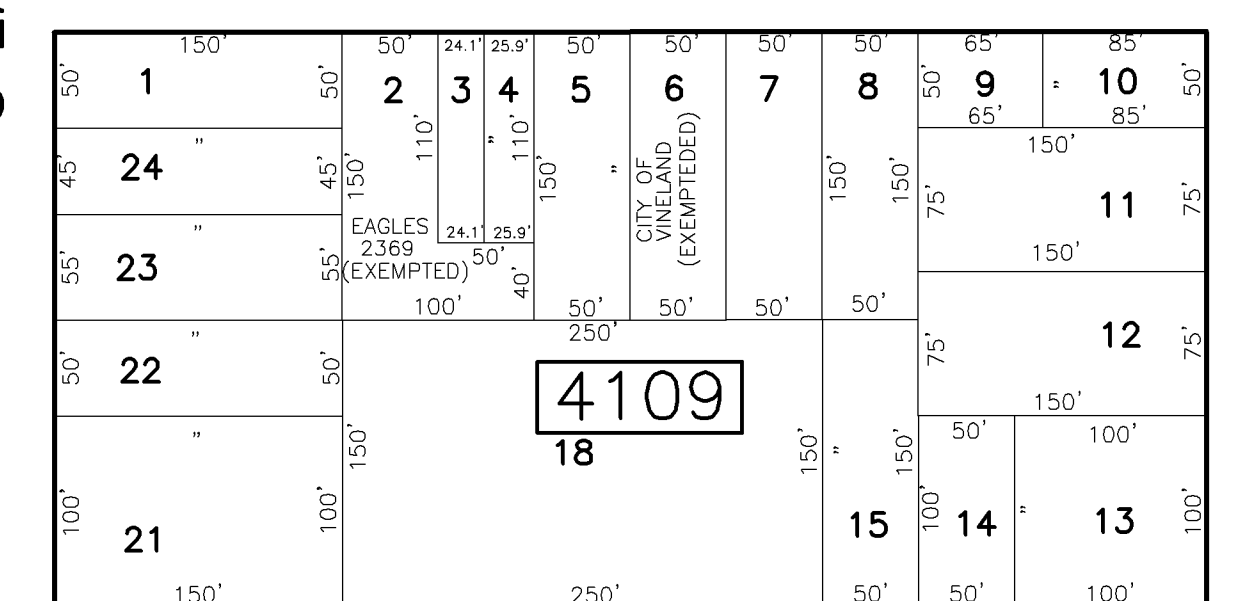
W. ALMOND ST.

E. ALMOND ST.



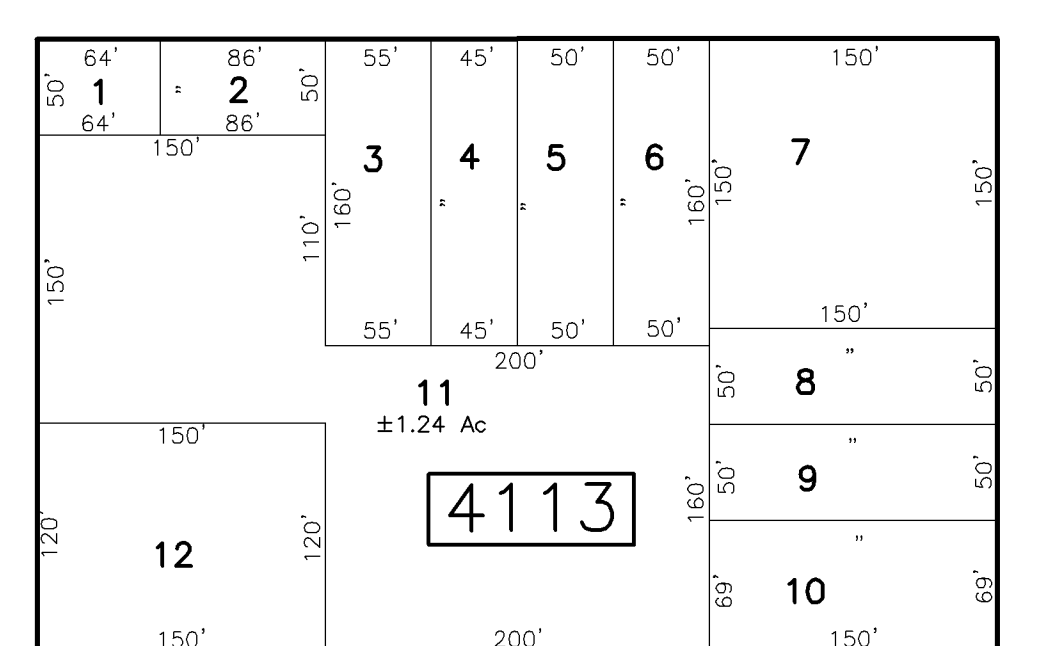
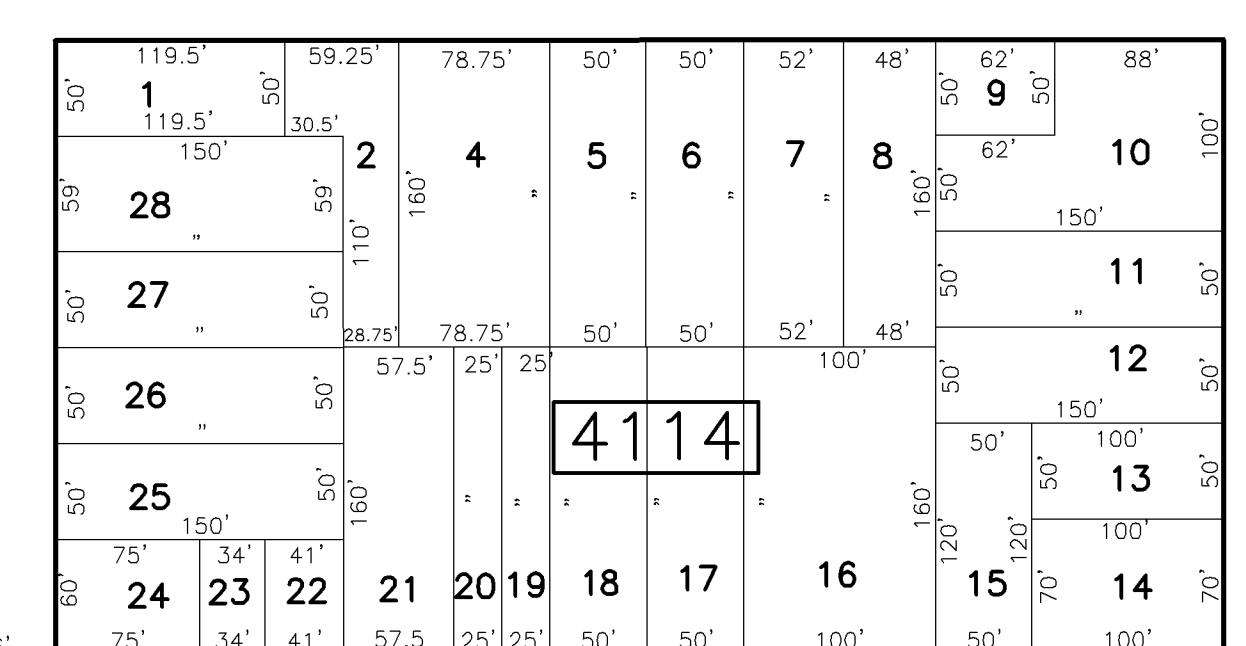
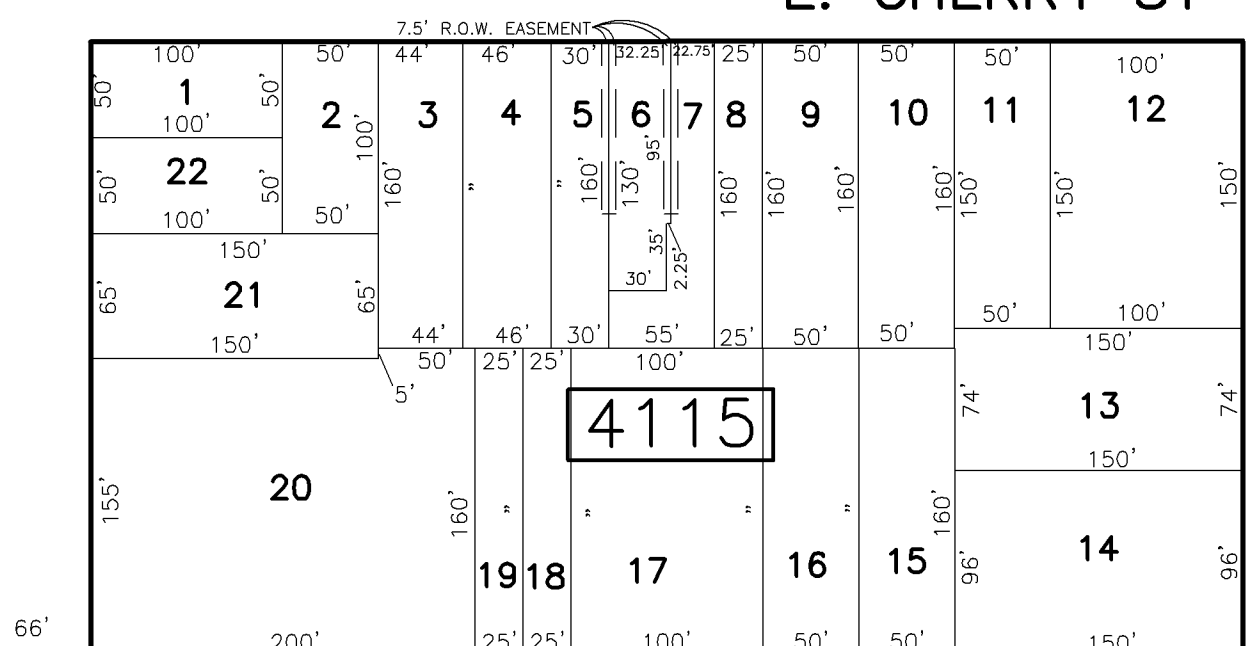
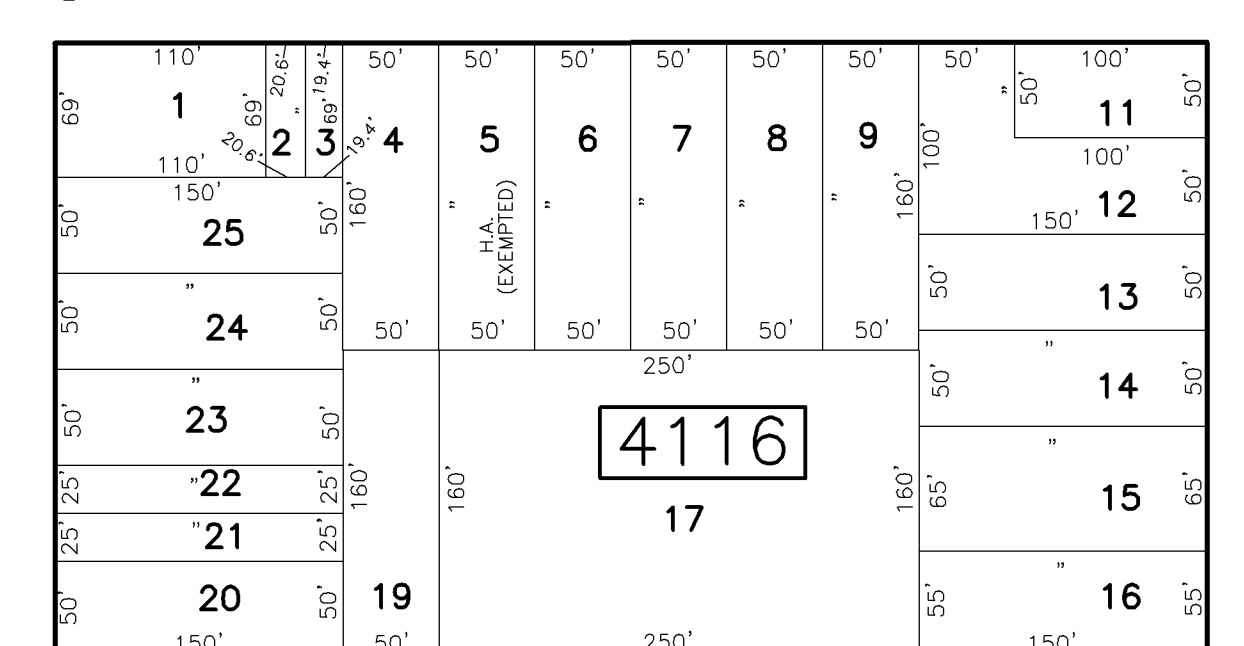
W. QUINCE ST.

E. QUINCE ST



W. CHERRY ST.

E. CHERRY ST



W. CHESTNUT AVE.

E. CHESTNUT AVE.

THIS MAP HAS BEEN DRAWN USING COMPUTER AIDED DRAFTING DESIGN (CADD).

SHEET 49

TAX MAP CITY OF VINELAND

CUMBERLAND COUNTY NEW JERSEY SCALE: 1" = 100' DATE: SEPT. 1999

OFFICE OF THE CITY ENGINEER 640 E. WOOD ST. VINELAND, NEW JERSEY 08360

DAVID J. BATTISTINI, PE & LS

CITY ENGINEER NEW JERSEY LICENSE NO. 26254

NEW JERSEY DEPARTMENT OF THE TREASURY  
 DIVISION OF TAXATION  
 PROPERTY ADMINISTRATION  
 APPROVED AS A TAX MAP PURSUANT TO THE AUTHORITY OF  
 N.J.S.A. 54:1-18 & 54:50-1  
 FOR THE DIRECTOR, DIVISION OF TAXATION  
*Jamaal J. Cole* C.T.A.  
 JAMES J. COLL, CHIEF, LOCAL ASSESSMENT COMPLIANCE  
*Barry G. DiDonato* C.T.A.  
 BARRY G. DIDONATO, PRINCIPAL FIELD REPRESENTATIVE  
 DATE: NOV 25 2012 SERIAL NO. 804