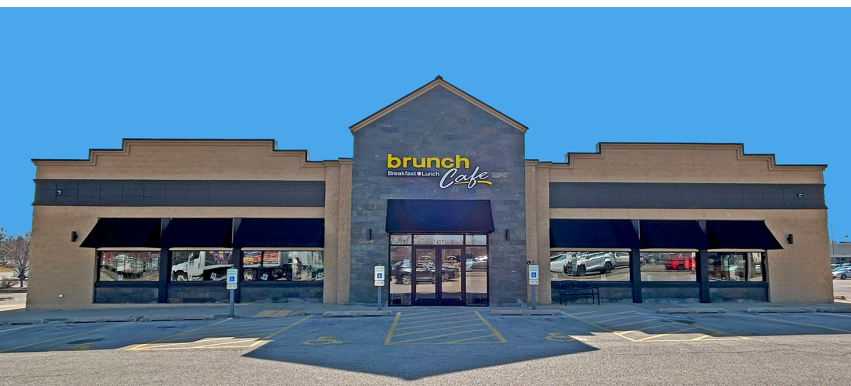
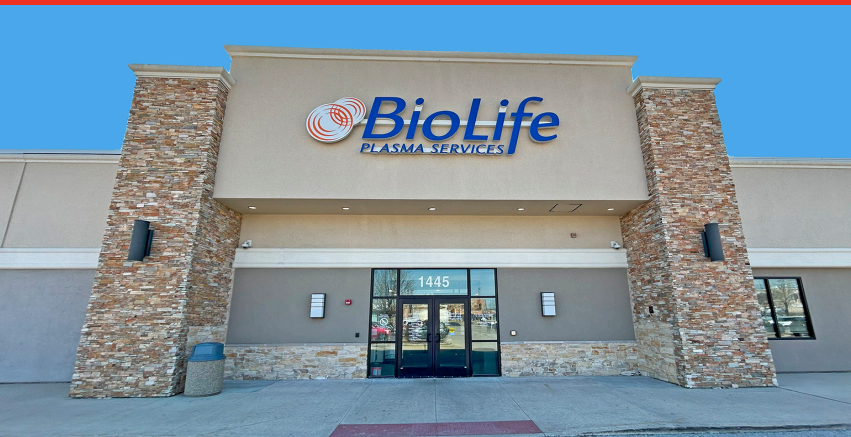




EDGEMARK

CENTENNIAL PLAZA
1401-1455 W. LAKE STREET
ADDISON, IL 60101



SPACE AVAILABLE FOR LEASE

847 SF - 6,000 SF

PROPERTY HIGHLIGHTS

- Located on busy Lake Street less than one mile east from the I-355/Lake Street interchange.
- Monument signage available.
- Excellent demographics and traffic counts.
- The business friendly Addison community proudly boasts more than 45 companies that employ more than 100 workers each.

DEMOGRAPHICS

	1 MILE	3 MILE	5 MILE
POPULATION	12,455	79,413	256,037
AVG HH INCOME	\$140,792	\$132,691	\$143,425
DAYTIME POPULATION	6,159	67,757	197,384
TRAFFIC COUNTS	LAKE STREET	32,400 VPD	
	ROUTE 53	23,485 VPD	

AREA RETAILERS

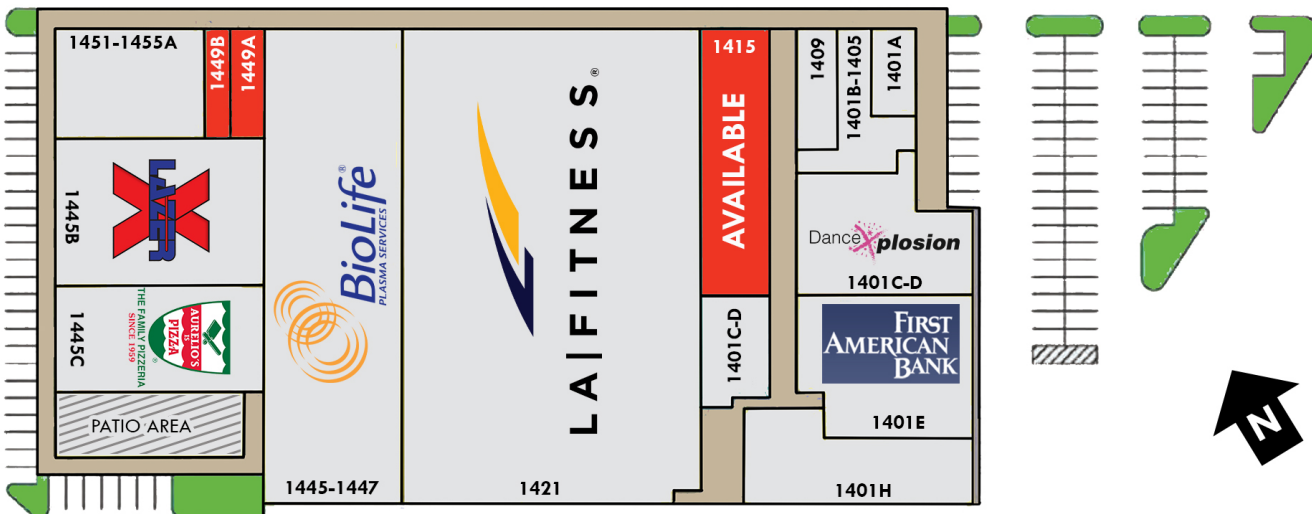
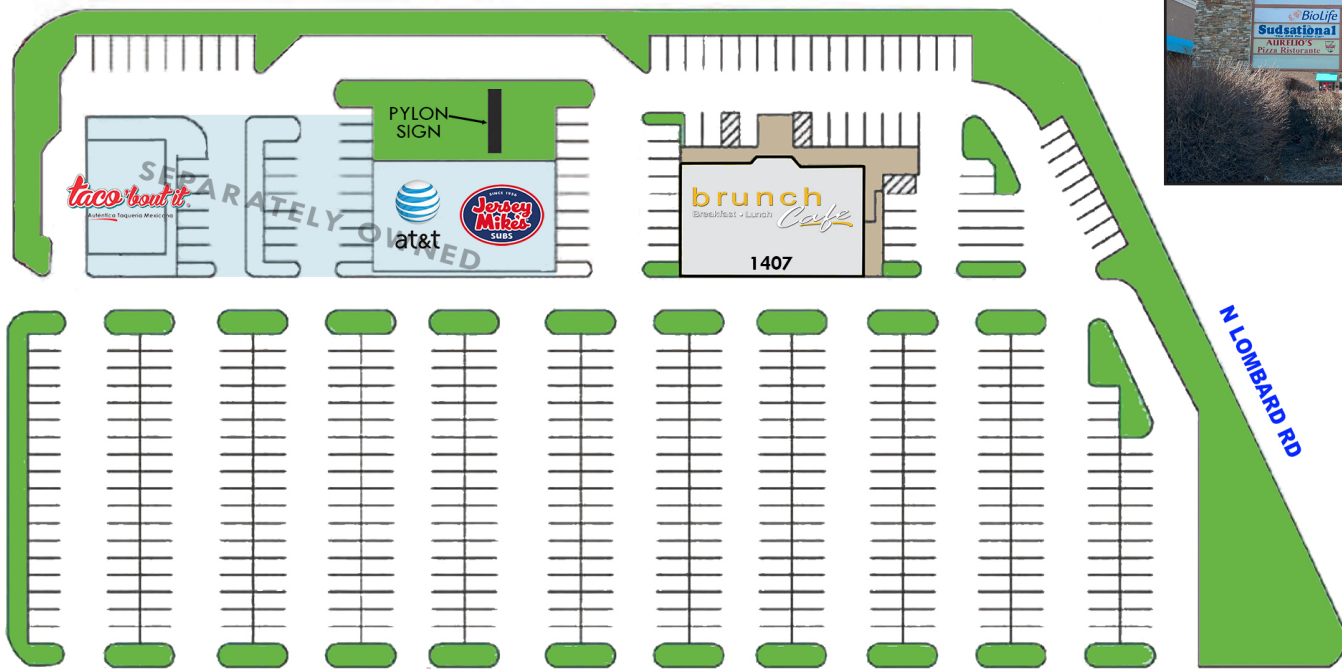


CONTACT INFORMATION
MATT SMETANA
630.572.5632
msmetana@edgemarkllc.com

MIKE WESLEY
630.572.5610
mwesley@edgemarkllc.com

EDGEMARK COMMERCIAL REAL ESTATE SERVICES LLC
2215 York Road, Suite 210
Oak Brook, IL 60523
630.472.1010
www.edgemarkllc.com

32,400 VPD **W LAKE STREET**



SPACE	SQ FT	TENANT	SPACE	SQ FT	TENANT
1401A	1,000	Centennial Cleaners	1445-1447	16,515	BioLife Plasma Services
1401B-1405	1,978	Skull & Thrones Hair Society	1449B	847	AVAILABLE
1401C-D	10,099	Dance Explosion	1449A	1,200	AVAILABLE
1401E	5,287	First American Bank	1451-1455A	4,778	Briki Cafe
1401H	6,768	Sudsational Car Wash	1455B	9,120	Lazer-X
1409	1,500	Esha Dental	1455C	5,280	Aurelio's Pizza & Pasta
1415	6,000	AVAILABLE	1407	5,756	Brunch Cafe
1421	39,339	LA Fitness		115,467 SF	TOTAL GLA



CENTENNIAL PLAZA

ADDISON TRAIL HIGH SCHOOL

MAPLE MEADOWS GOLF CLUB

THE PRESERVE AT OAK MEADOWS

GameStop SportClips

Walmart

ALDI

Sam's Club

MATTRESS FIRM

Hampton Inn & Suites

MARCUS THEATRES

53

INTERSTATE 355

Hilton Garden Inn

Starbucks

verizon

Panera Bread

Great Clips

CVS pharmacy

BMO Harris Bank

Culver's

T-Mobile

DAPPER'S WEST FAMILY RESTAURANT

LINKS & TEES

LAKE ST

CHASE

NetBrite CAR WASH

MILL RD

Arby's

Jewel-Osco ACE Hardware

Acron's

Loy Mahati's PIZZERIA

Pizza Hut

DOLLAR TREE

20

TACO BELL planet fitness

Auto Zone

Portillo's

ADDISON RD

Walgreens

ARMY TRAIL RD



CONTACT INFORMATION

MATT SMETANA
630.572.5632
msmetana@edgemarkllc.com

MIKE WESLEY
630.572.5610
mwesley@edgemarkllc.com

The information contained herein has either been given to us by the owner of the property or obtained from sources that we deem reliable. We have no reason to doubt its accuracy but we do not guarantee it.