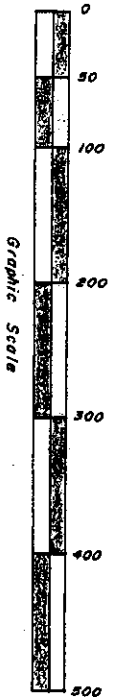
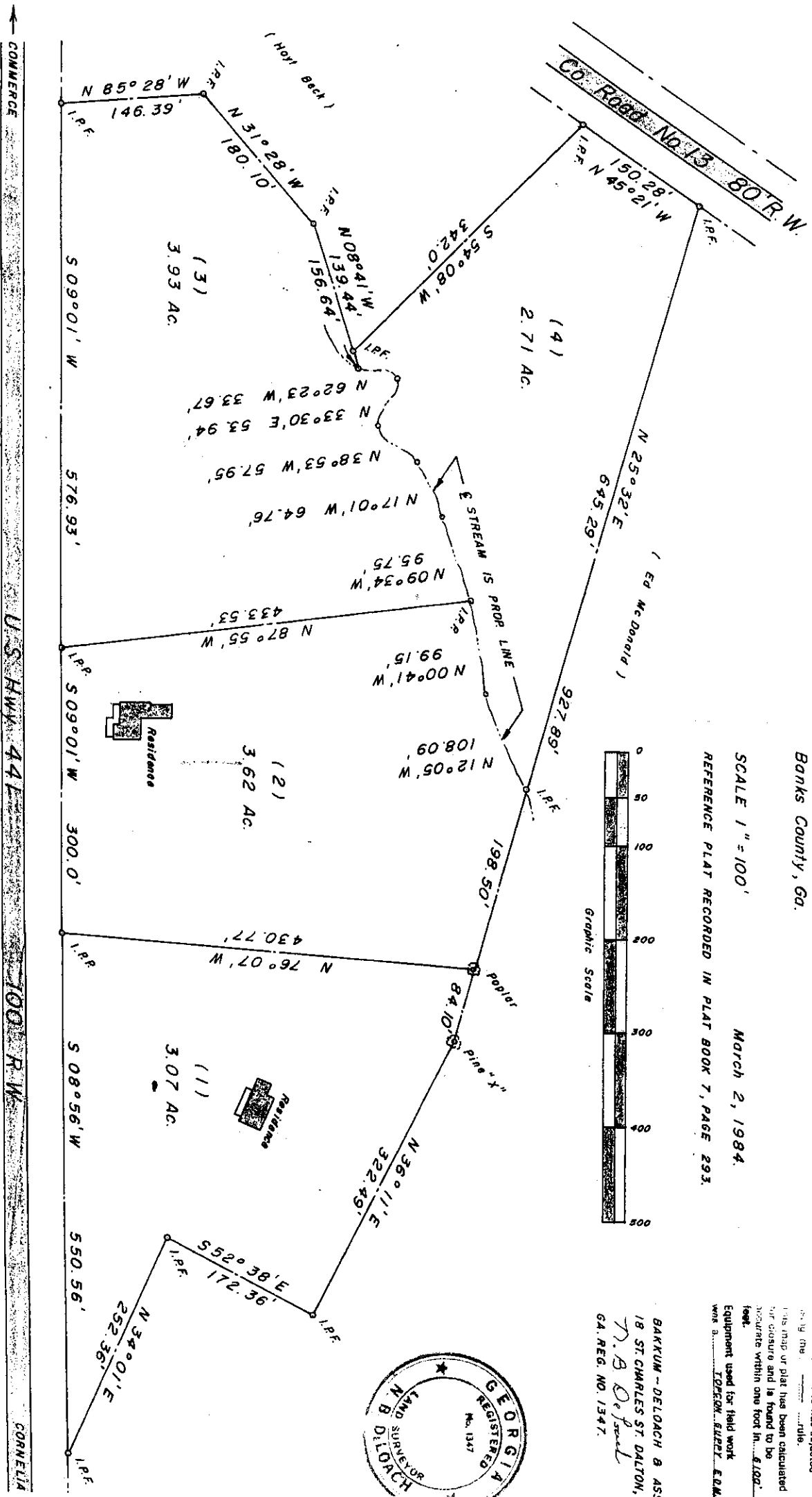


MAG. NORTH.

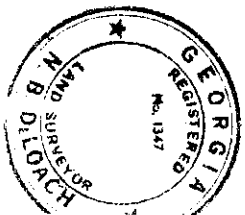


Plat for
Ray Pruitt
 Located in Bushville Dist., 208 G.M.D.,
 Banks County, Ga.

SCALE 1" = 100'

MARCH 2, 1984.

REFERENCE PLAT RECORDED IN PLAT BOOK 7, PAGE 293.



The field data upon which this plat is based has a closure error of less than 1/100,000 feet and an angular error of not more than 1/100,000 of a degree. The plat has been adjusted by the method of least squares. This map or plat has been calculated by the method of least squares and is found to be accurate within one foot in 100,000 feet.

Equipment used for field work was a TOPCON SUPER EDM.

BAKKUM - DELOACH & ASS.
 18 ST. CHARLES ST. DALTON,
 N. B. DeLoach
 GA. REG. NO. 1347.