

# OFFICE SPACE FOR SALE OR LEASE

2ND FLOOR OFFICE SPACE FOR LEASE



9551 S 700 E Suite 200 Sandy, Utah

## **SANDY OFFICE SPACE**

Welcome to your new office space in Sandy. The unit consists of 3 private offices, reception area, and open area for cubicles.

Consists of half of the upstairs unit. Shared bathrooms.

The Landlord is willing to make this space work for your business and has different options for you to lease.



# PROPERTY HIGHLIGHTS



## Lease Option

### Upstairs Unit - 1,210 Sq Ft

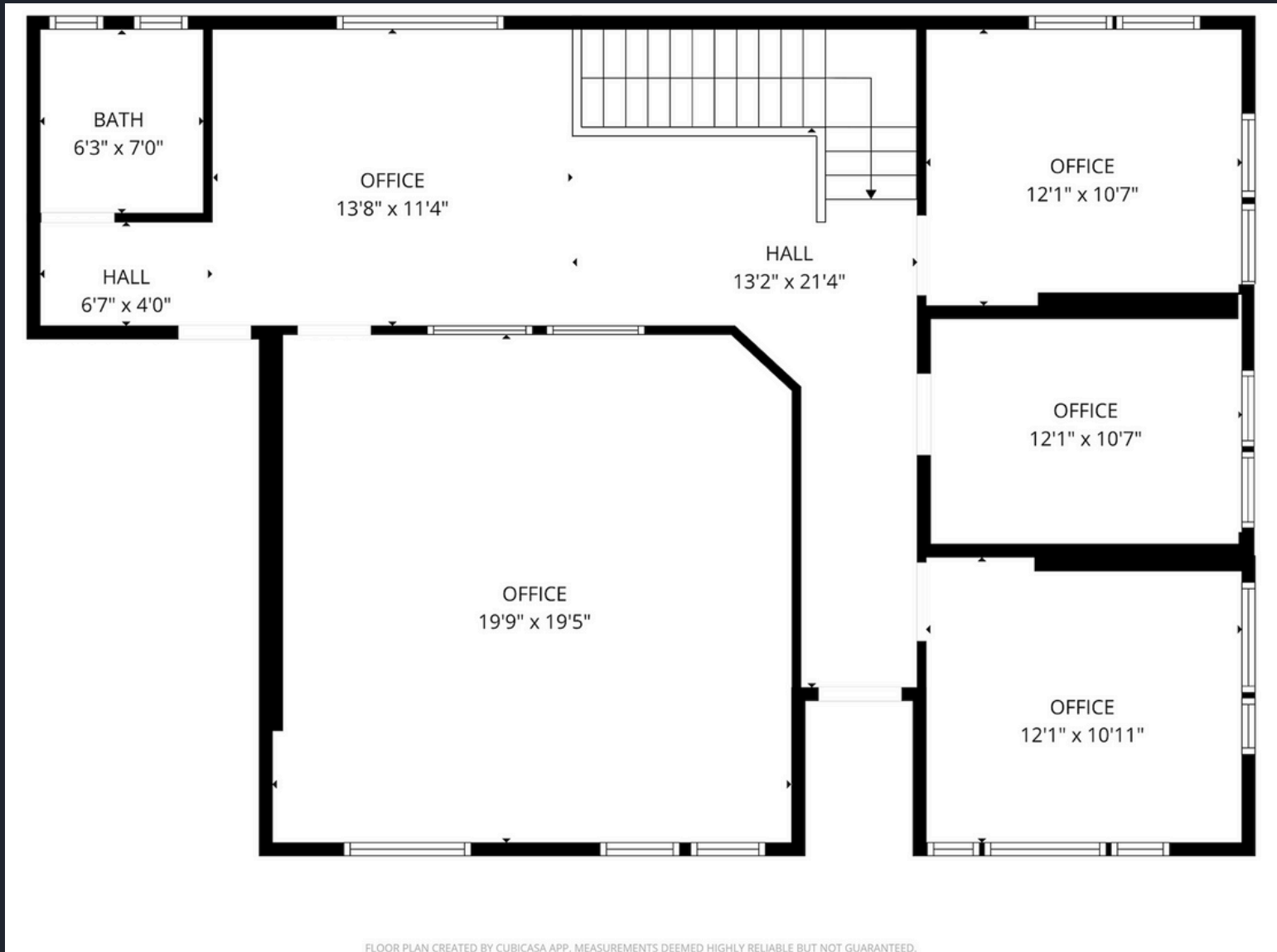
- Rate \$1,850 Per Month Full Service
- 3 Private offices
- Large cubicle area (Currently 4 cubicles inside)
- Furniture can be Included
- Reception area
- Shared Bathroom



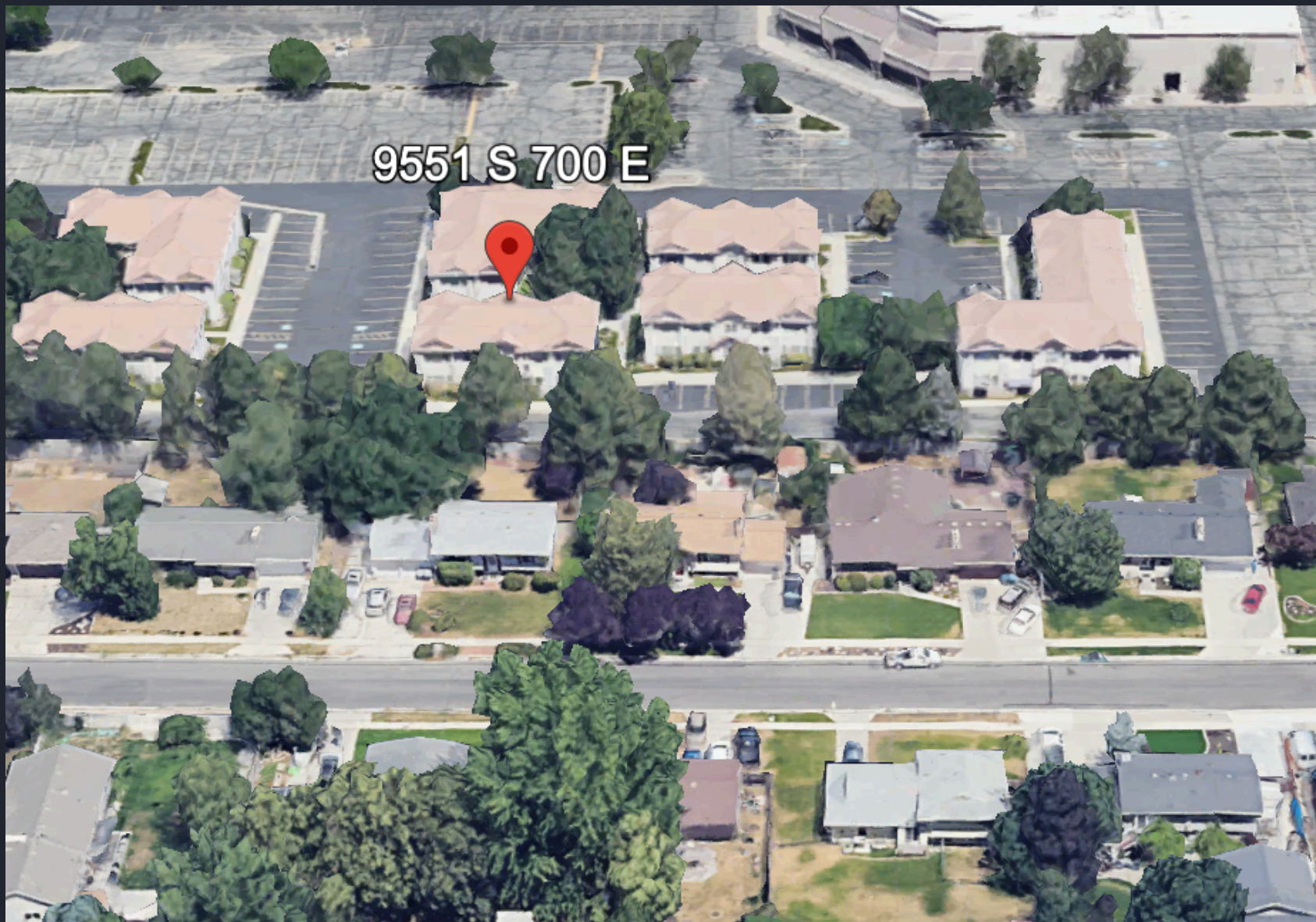




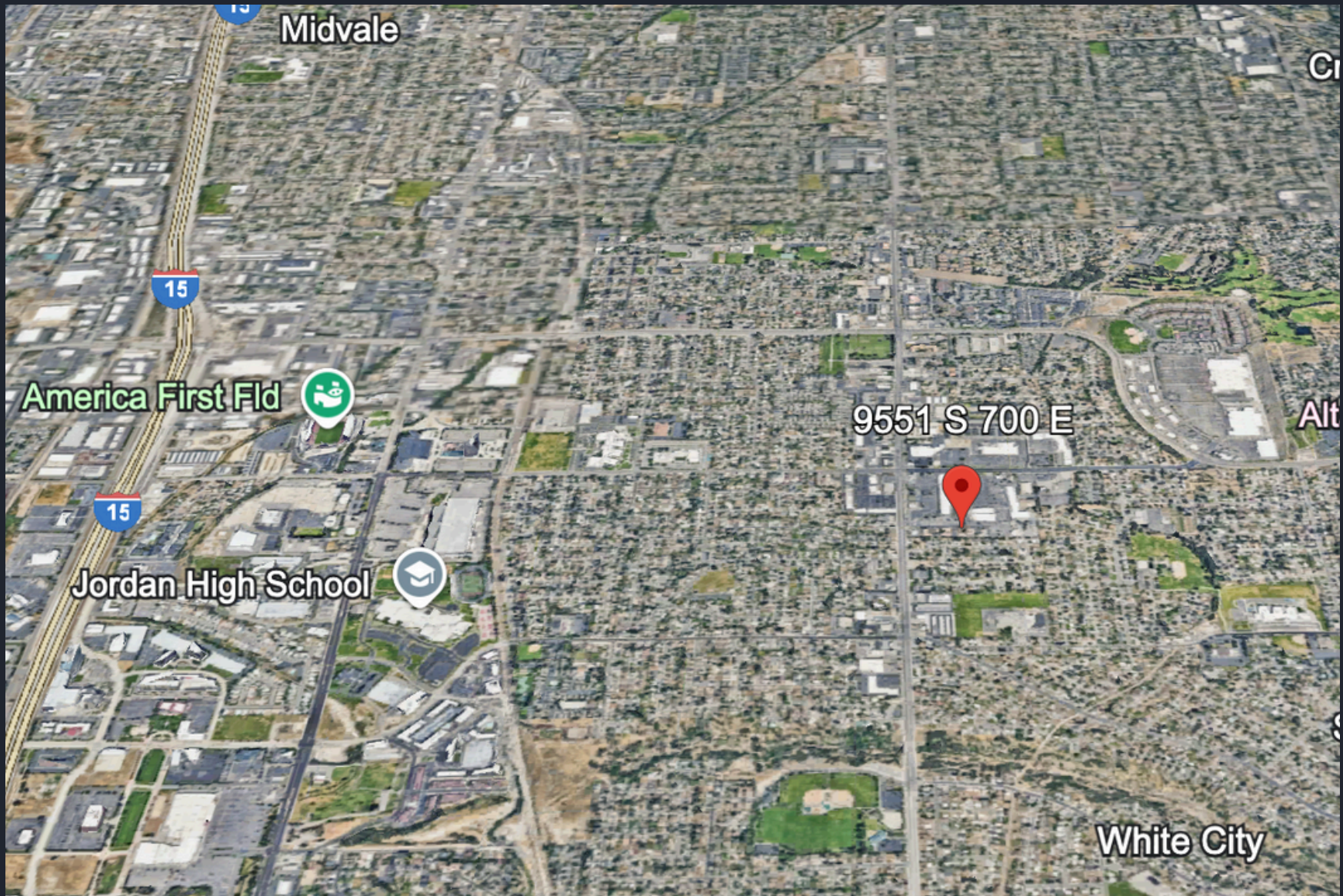
# FOR LEASE FLOORPLAN



# AERIAL VIEW



# AERIAL VIEW



# CONTACT US TODAY FOR A PRIVATE TOUR!

Caden Butterfield  
Caden@Coreutah.com  
385-350-1811



**9551 S 700 E Suite 200 Sandy, Utah**



Prospective buyers and tenants are advised to independently verify all measurements of the property.