

Parkman Brook Shopping Center

2,000 - 7,490 SF AVAILABLE FOR LEASE

Anchored by Staples and Planet Fitness, Parkman Brook Shopping Center is located just off Route 101 (Exit 16) on Route 108. Ample visibility from the road and high traffic counts help make this the dominant shopping center in Stratham. Other national retailers in the area include Market Basket, Hannaford, CVS, Rite Aid, and more.



KEY TENANTS

STARBUCKS™

Staples

BOOTLEGGERS

FOOTWEAR CENTERS



GROSS LEASABLE AREA

70,000 SF



PROPERTY STATUS

2,000 - 7,490 SF AVAILABLE



AVERAGE DAILY TRAFFIC

Route 108: 20,000 ADT

Route 101: 38,000 ADT

Stratham, NH

20 Portsmouth Avenue
Stratham, NH 03885



DEMOGRAPHICS	3 Miles	5 Miles	10 Miles
Total Population	19,156	37,725	150,445
Avg. Household Income	\$147,701	\$151,293	\$139,406
Daytime Population	23,189	38,567	161,353



MARKET BASKET

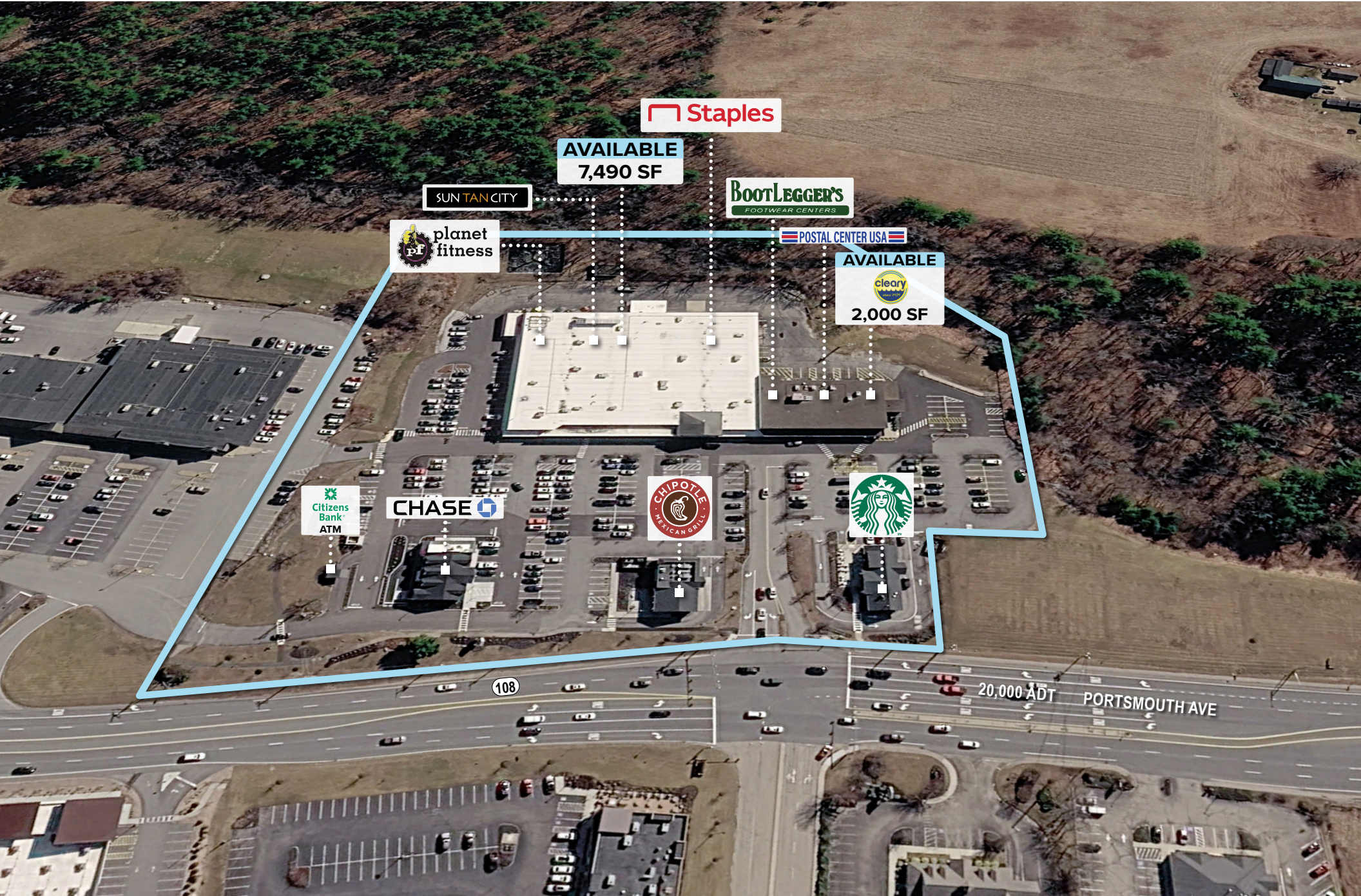
KINGS HIGHWAY PLAZA

STRATHAM CROSSING

PARKMAN BROOK SHOPPING CENTER



EXETER COMMONS



 Staples

AVAILABLE
7,490 SF

SUN TAN CITY

 planet fitness

 BOOTLEGGERS
FOOTWEAR CENTERS

 POSTAL CENTER USA

AVAILABLE
 clearly
2,000 SF

 Citizens Bank
ATM

 CHASE

 CHIPOTLE
MEXICAN GRILL



108

20,000 ADT
PORTSMOUTH AVE

PARKMAN BROOK SHOPPING CENTER

STRATHAM, NH

Leased By:



617.553.1820

www.blacklinere.com

Owned & Managed By:

**NORTHSTAR
CENTERS**

The information above has been obtained from sources believed reliable. While we do not doubt its accuracy, we have not verified it and make no guarantee, warranty or representation about it. It is your responsibility to independently confirm its accuracy and completeness. Any projections, opinions, assumptions or estimates used are for example only and do not represent the current or future performance of the property. You and your advisors should conduct a careful, independent investigation of the property to determine, to your satisfaction, the suitability of the property for your needs.

