

FOR LEASE OR SALE | ±71,146 SF WAREHOUSE



2118 & 2120 Commerce Drive
Cayce, SC 29033

NAIColumbia

John Gregory, PE, SIOR, CCIM
803.873.1883
jgregory@naicolumbia.com

Tristan Lee
336.870.8928
tlee@naicolumbia.com

Property Summary

2118 & 2120 COMMERCE DRIVE



PROPERTY DETAILS

- ▶ ±71,146 SF Warehouse
- ▶ ±5,060 SF Office Space
- ▶ Situated on ±3.40 Acres
- ▶ Zoning: M-1 (Light Industrial)
- ▶ Year Built/Renovated: 1965, 1970 & 2024
- ▶ Landlord Improvements - Roof (2024)
- ▶ Clear Heights (Left Bldg):
24.6' (Center) | 22.4 (Eaves)
- ▶ Clear Heights (Right Bldg):
24.75' (Center) | 18.3' (Eaves)
- ▶ Covered Dock Doors: 10
- ▶ Drive-in Doors: 1
- ▶ Power: 600 Amps | 480V
- ▶ Sprinklers: Wet
- ▶ Water/Sewer: City of Cayce
- ▶ Electricity/Natural Gas: Dominion Energy
- ▶ Easy access to I-26 (Exit 113), I-77 & I-20
- ▶ Less than 3 miles from Columbia Metropolitan Airport (CAE)

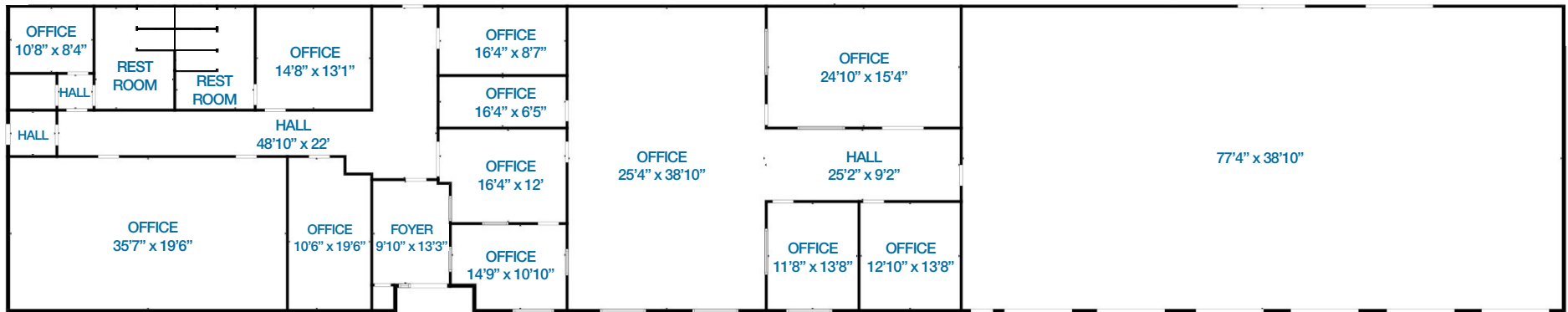
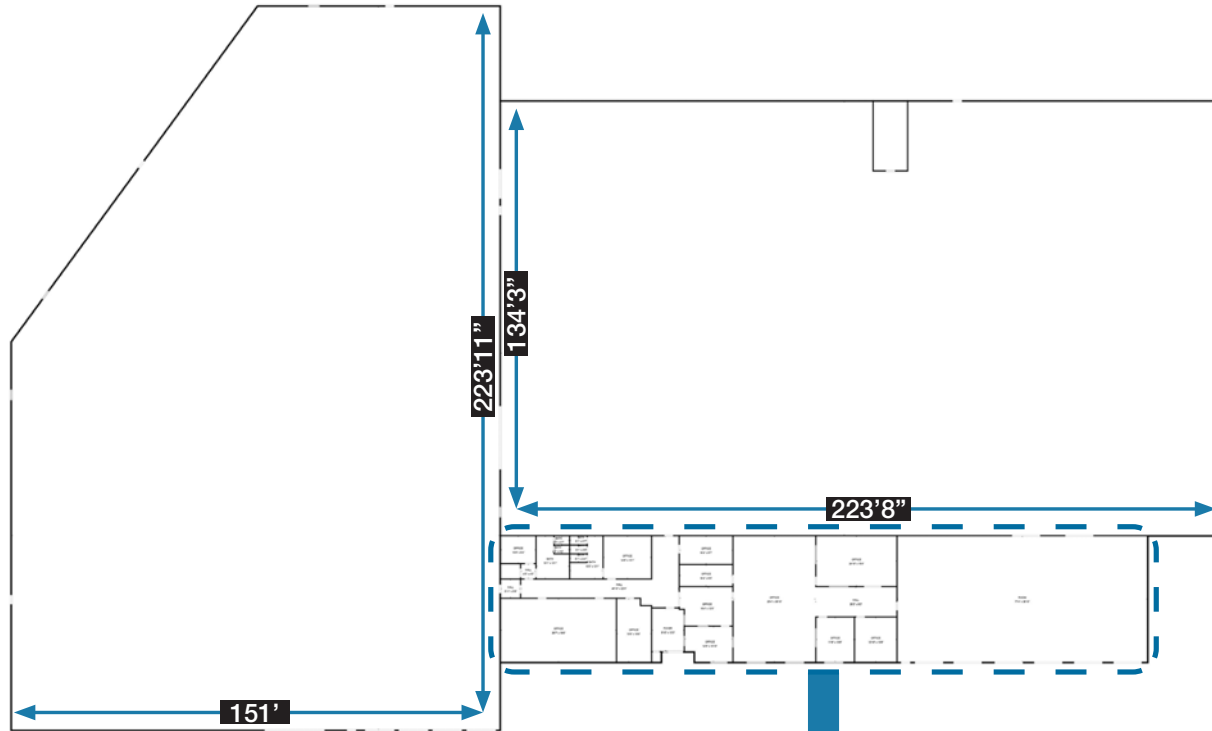
Lease Rate: \$6.00/SF NNN

Sale Price: \$5,800,000

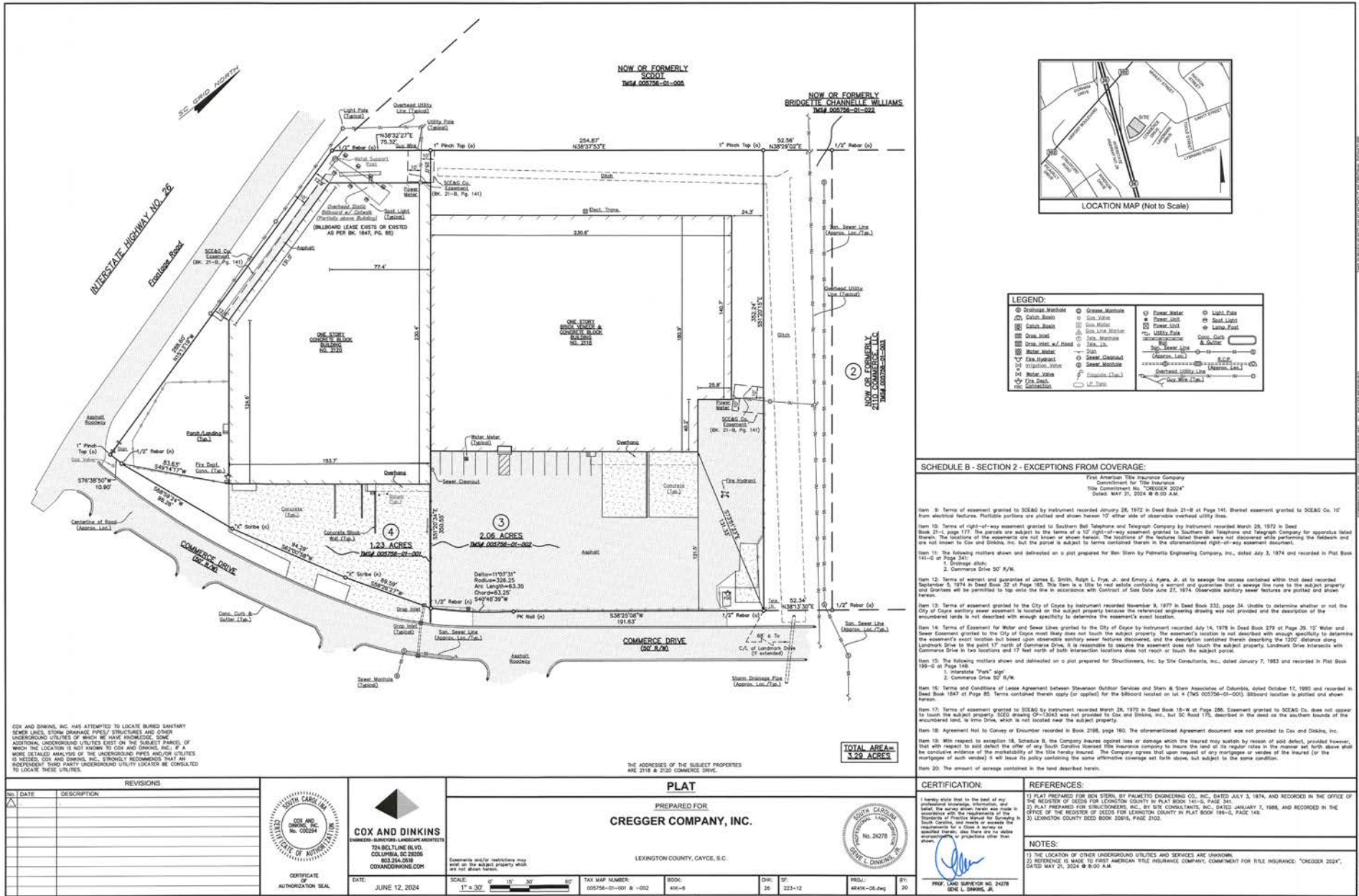
This material may contain content generated with AI assistance and publicly sourced data. NAI Columbia makes every effort to verify the information but makes no warranties or representations regarding the accuracy, completeness, or reliability of the information. Independent verification of all details is strongly encouraged. Prices, terms, and availability are subject to change without prior notice.

Floor Plan

2118 & 2120 COMMERCE DRIVE



Floor plan is for illustrative purposes only. All dimensions and layouts are approximate and subject to change without notice.





DISTANCE FROM SITE

±0.3 mile	±3 miles
±7 miles	±55 miles
±2.7 miles	
±110 miles	

14' x 14'
DRIVE-IN DOOR

(4) 9' x 10'
DOCK DOORS

(6) 9' x 10'
DOCK DOORS

SECURE LAYDOWN
YARD

