

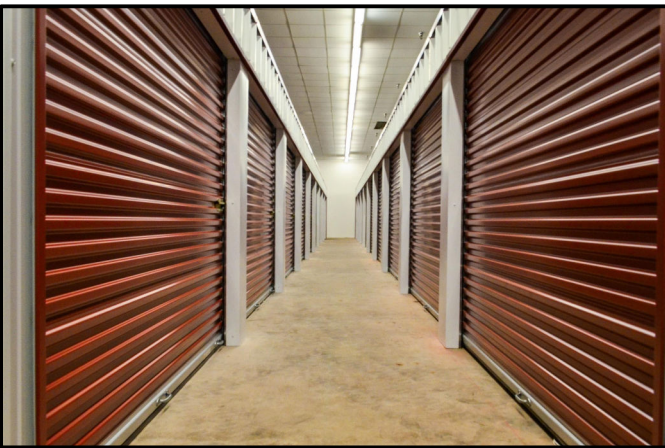
# Large Storage Facility on Prime Corner

8921 NW Expressway

Oklahoma City, OK 73162



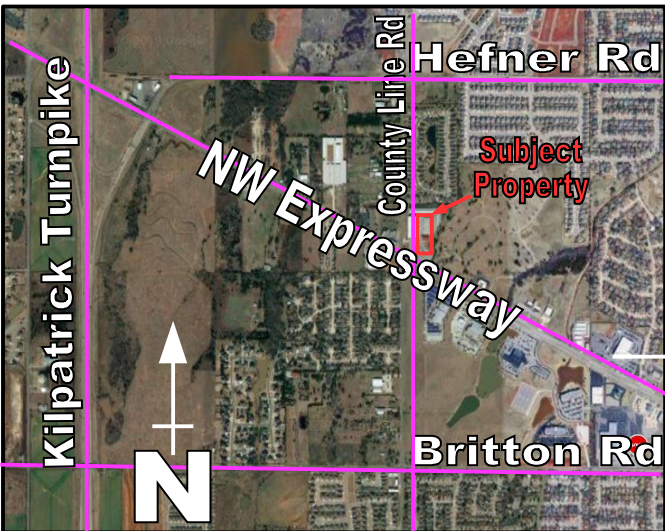
- 109,100 SF Under Roof on 7 +/- Acres
- Onsite Living Quarters
- TPO Roof Installed 2024
- Frontage on NW Expressway & County Line Rd
- 27,697 Daily Traffic Count
- 1 Mile East of Kilpatrick Turnpike



| Covered Storage |            |                             |
|-----------------|------------|-----------------------------|
| Size            | # of Units | Current Monthly Rental Rate |
| 12' X 60'       | 42         | \$225                       |
| 12' X 50'       | 8          | \$210                       |
| 12' X 40'       | 2          | \$195                       |

| Outdoor Storage |            |                             |
|-----------------|------------|-----------------------------|
| Size            | # of Units | Current Monthly Rental Rate |
| 10' X 22'       | 24         | \$95                        |
| 10' X 30'       | 2          | \$110                       |
| 12' X 40'       | 2          | \$150                       |

| Enclosed Storage Warehouse |            |                             |
|----------------------------|------------|-----------------------------|
| Size                       | # of Units | Current Monthly Rental Rate |
| 50' X 60'                  | 2          | \$1,610                     |
| 25' X 60'                  | 7          | \$950                       |
| 25' X 40'                  | 6          | \$625                       |
| 12' X 40'                  | 1          | \$395                       |



| Personal Storage (Indoor Climate Controlled) |            |                             |
|----------------------------------------------|------------|-----------------------------|
| Size                                         | # of Units | Current Monthly Rental Rate |
| 5' X 10'                                     | 5          | \$70                        |
| 10' X 10'                                    | 95         | \$110                       |
| 10' X 20'                                    | 15         | \$200                       |
| 10' X 30'                                    | 20         | \$295                       |

| Retail   |            |                             |
|----------|------------|-----------------------------|
| Size     | # of Units | Current Monthly Rental Rate |
| 1,125 SF | 4          | \$2,125                     |
| 4,750 SF | 1          | \$5,995                     |
| 6,500 SF | 1          | \$5,000                     |
| 2,600 SF | 1          | \$2,167                     |



# LOWELL GROUP inc

Contact: Reagan Lowell Cell: (405) 412-8853 Office: (405) 787-5304 Reagan@LowellGroupOK.com

Information above, while not guaranteed, is from sources which Lowell Group, Inc. deems to be reliable. Subject to errors, omissions, prior sale, change in price and withdrawal without notice. Owner/Broker.



