



Each office independently owned and operated

KENNETH FISHER - RE/MAX COMMERCIAL

1650 Military Cutoff Rd | Ste 100

Wilmington, NC 28403

FOR SALE

RETAIL PROPERTY

STAND ALONE QUICK SERVE RESTAURANT BUILDING FOR SALE

4023 MARKET ST | WILMINGTON, NC 28403



PRESENTED BY:

KENNETH FISHER

Broker / REALTOR

910.616.2123

NC #227264

RESTAURANT BUILDING FOR SALE

4023 MARKET ST | WILMINGTON, NC 28403



PROPERTY DESCRIPTION

This stand-alone quick serve restaurant building with drive thru is for sale at an excellent value. It is not quite turn key but it is close. The highly visible 1750 square foot building sits on .95 acres on one of the most heavily traveled, and redeveloping corridors in Wilmington, about 3 miles from the heart of downtown. Arched windows and rooftop facade give the building a unique character. Street front orientation grabs customers' attention. The property has driveways on Market Street (primary) and Princess Place Drive for convenient access to a signalized intersection, which is quite valuable during busy traffic times. The kitchen has a hood system in place, and connections for the additional equipment to suit the concept. All existing equipment does convey with the sale, including 2 exterior walk in coolers in a fenced in area just out the back door. A wrap around bar separates the kitchen and service area from dining room. About half of the parcel is undeveloped and could be set up as a nice outdoor dining, or courtyard area. The parking lot contains 29 striped parking spaces including 1 handicap with access aisle. This area is experiencing abundant redevelopment and new construction currently underway.

OFFERING SUMMARY

Sale Price:	\$799,000
Lot Size:	41,195 SF
Building Size:	1,748 SF

DEMOGRAPHICS	1 MILE	3 MILES	5 MILES
Total Households	5,496	29,686	60,952
Total Population	11,422	64,552	134,619
Average HH Income	\$63,343	\$73,793	\$90,788



KENNETH FISHER - RE/MAX COMMERCIAL
Each office independently owned and operated

KENNETH FISHER

Broker / REALTOR

910.616.2123

kfisher@beachtownbrokers.com

NC #227264

1650 Military Cutoff Rd | Ste 100
Wilmington, NC 28403

FOR SALE

RETAIL PROPERTY

ADDITIONAL PHOTOS

RESTAURANT BUILDING FOR SALE

4023 MARKET ST | WILMINGTON, NC 28403



KENNETH FISHER - RE/MAX COMMERCIAL
Each office independently owned and operated

KENNETH FISHER

Broker / REALTOR

910.616.2123

kfisher@beachtownbrokers.com

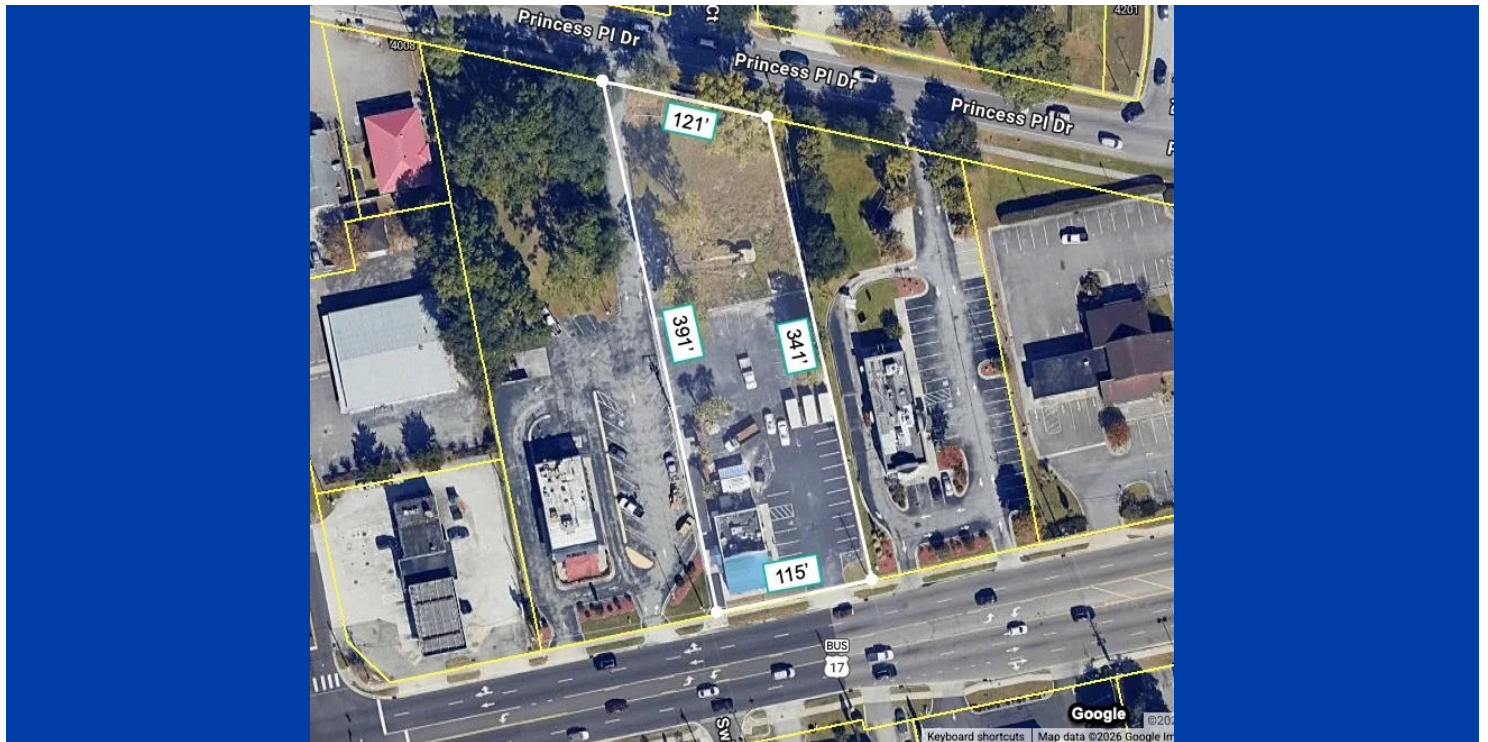
NC #227264

1650 Military Cutoff Rd | Ste 100
Wilmington, NC 28403

All information contained herein is deemed reliable but not guaranteed. Each office independently owned and operated

RESTAURANT BUILDING FOR SALE

4023 MARKET ST | WILMINGTON, NC 28403



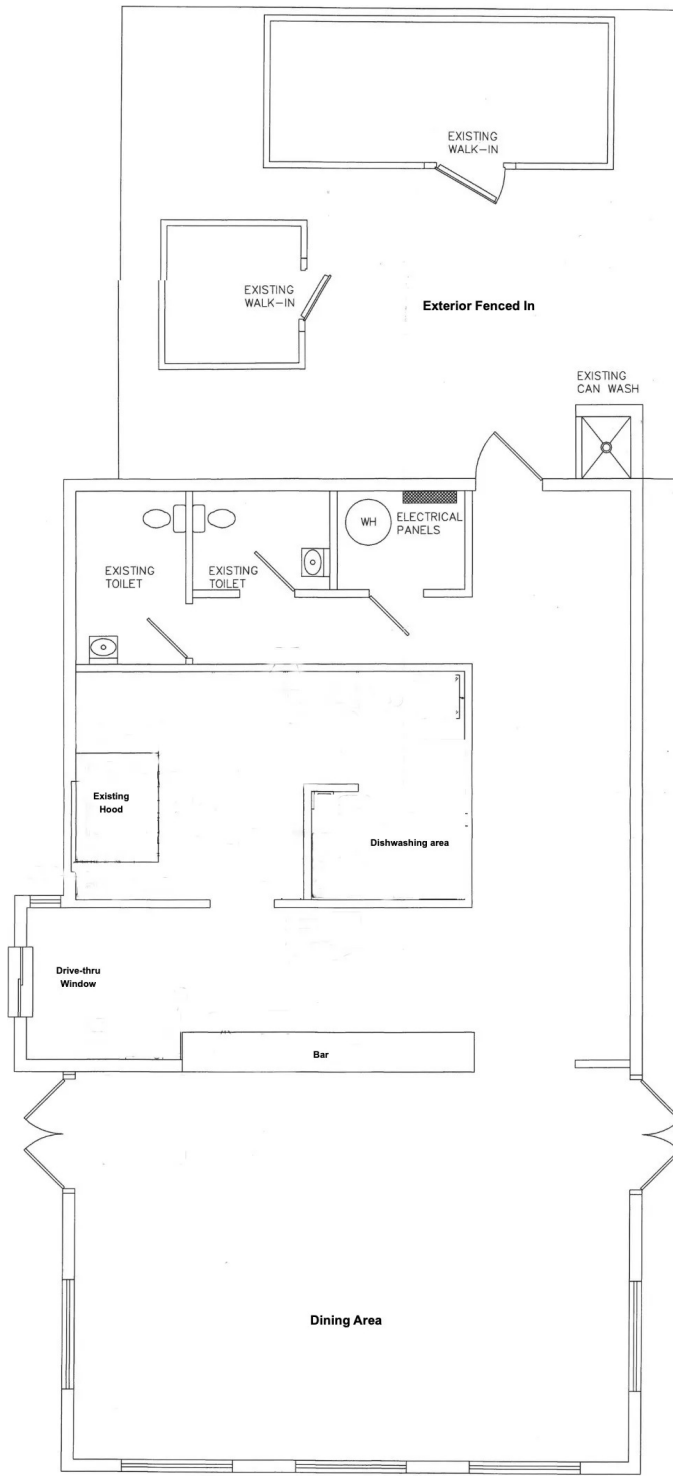
KENNETH FISHER - RE/MAX COMMERCIAL
 Each office independently owned and operated

KENNETH FISHER
 Broker / REALTOR
 910.616.2123
 kfisher@beachtownbrokers.com
 NC #227264

1650 Military Cutoff Rd | Ste 100
 Wilmington, NC 28403

RESTAURANT BUILDING FOR SALE

4023 MARKET ST | WILMINGTON, NC 28403



KENNETH FISHER - RE/MAX COMMERCIAL
Each office independently owned and operated

KENNETH FISHER
Broker / REALTOR
910.616.2123
kfisher@beachtownbrokers.com
NC #227264

1650 Military Cutoff Rd | Ste 100
Wilmington, NC 28403