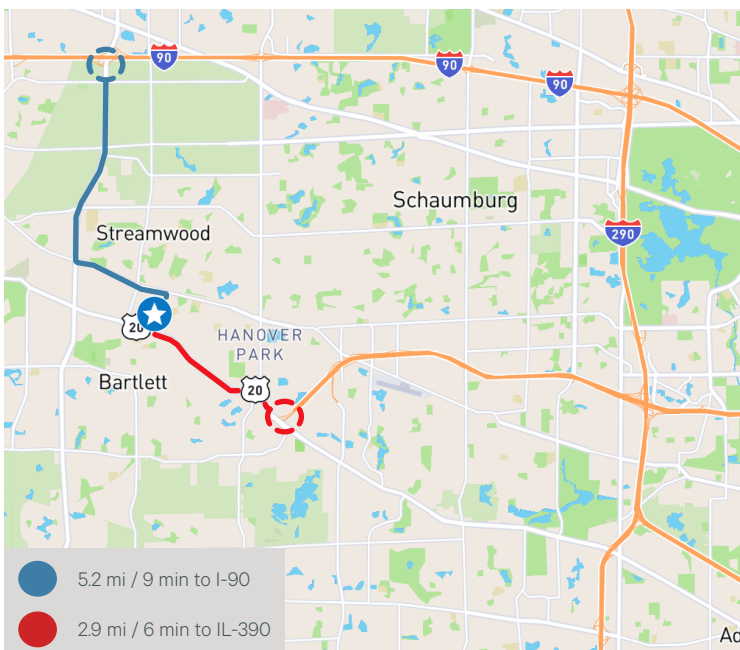


230 Roma Jean Parkway Streamwood, IL

9,063 SF Available For Sale / Lease on Large Land Site



Specifications	
Building Size	9,063 SF
Office Size	2,257 SF
Ceiling Height	14'
Loading	1 drive-in door (expandable to 8)
Power	600A @ 277/480v
Car Parking	21 spaces (expandable)
Taxes	\$23,006.89 (\$2.53 PSF) annually *existing Cook County 6B abatement
Asking Sale Price	Subject to offer
Asking Lease Rate	Subject to offer

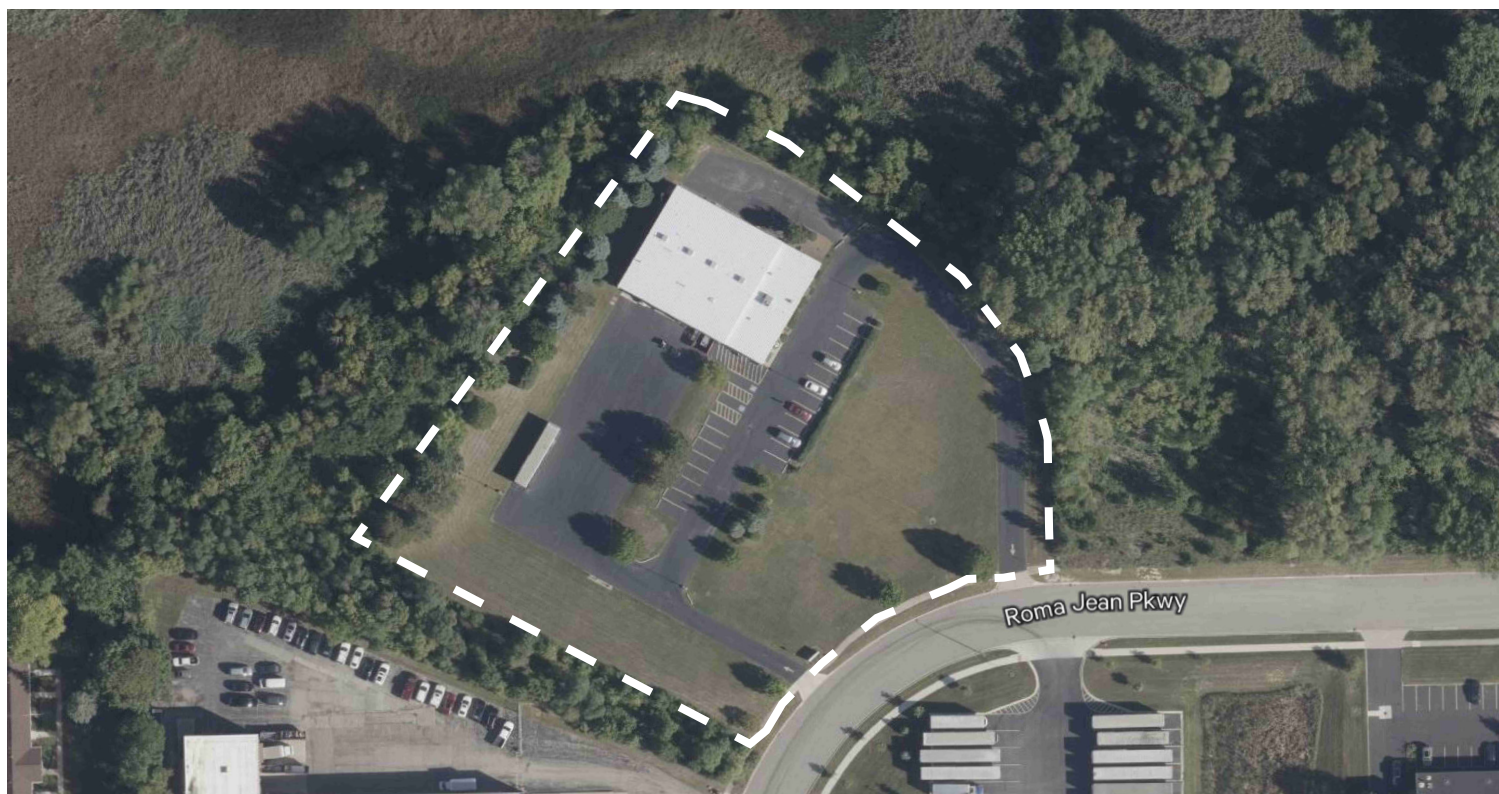
230 Roma Jean Parkway

Streamwood, Illinois 60107

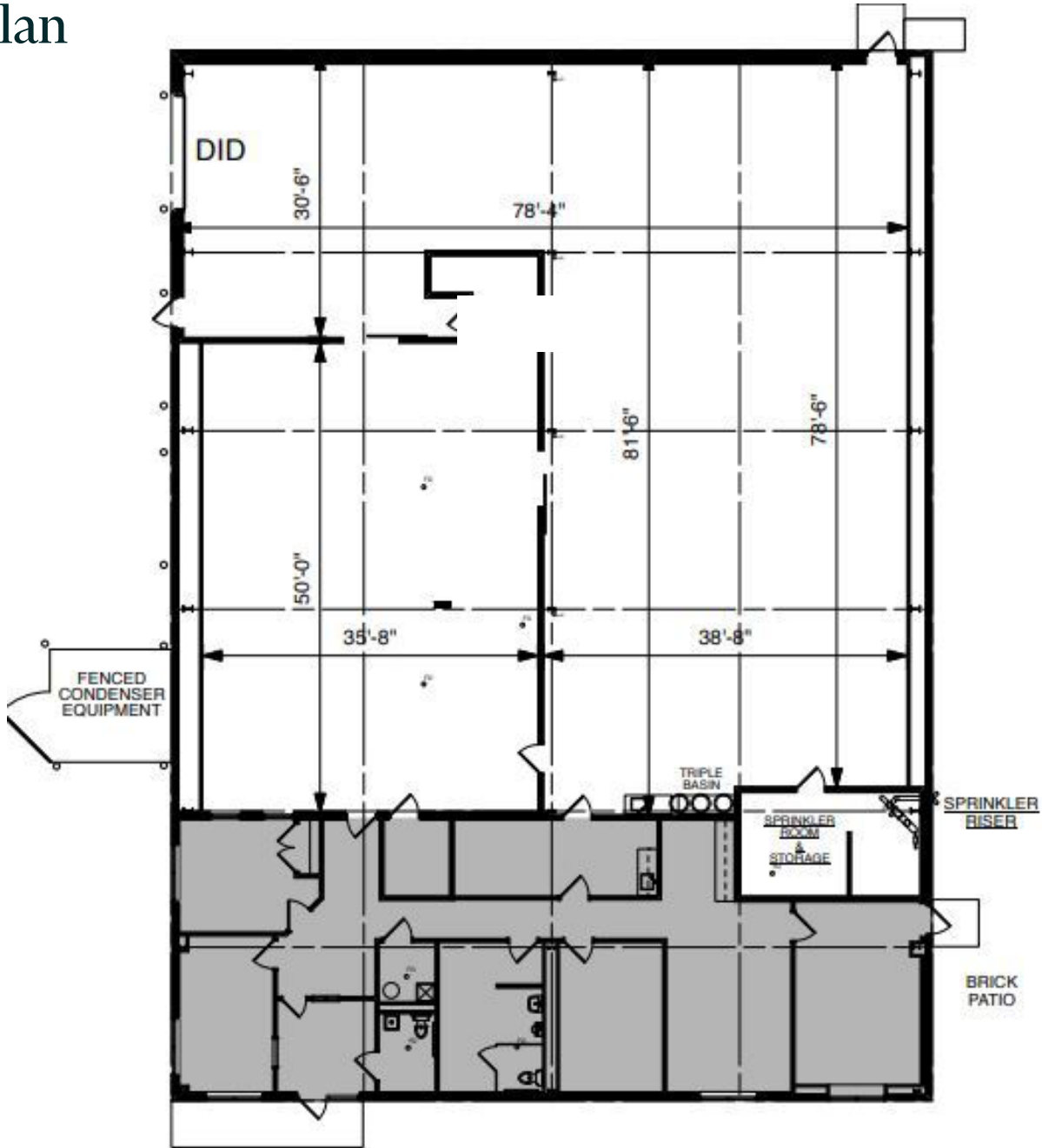
For Sale or For Lease

Highlights

- + Close proximity to major expressways and roadways, including I-90, IL-390, Lake Street and Irving Park Road
- + Free-standing, single-tenant building
- + Well-maintained by ownership - new roof and new HVAC units serving warehouse
- + Partially air-conditioned warehouse
- + Large parking lot with potential for secured outside storage and/or expandable car parking
- + Former State of Illinois Emissions Testing Center
- + Former Bitcoin mining facility
- + Attractive \$0.07 kWh power cost



Site Plan



Contact Us

Cal Payne
Executive Vice President
+1 312 343 7707
calum.payne@cbre.com

Clayton Thorson
Associate
+1 630 344 2560
clayton.thorson@cbre.com

Bryce Even
Client Services Specialist
+1 630 217 7105
bryce.even@cbre.com

© 2026 CBRE, Inc. All rights reserved. This information has been obtained from sources believed reliable, but has not been verified for accuracy or completeness. You should conduct a careful, independent investigation of the property and verify all information. Any reliance on this information is solely at your own risk. CBRE and the CBRE logo are service marks of CBRE, Inc. All other marks displayed on this document are the property of their respective owners, and the use of such logos does not imply any affiliation with or endorsement of CBRE. Photos herein are the property of their respective owners. Use of these images without the express written consent of the owner is prohibited.