

BOUTIQUE SALON OPPORTUNITY IN THE HEART OF WEST LITTLE ROCK

P4
Realty Group

Salon | Spa | Medical Aesthetics Space
± 840 SF Available | Front Door Parking



1431 MERRILL DRIVE | LITTLE ROCK, AR

NNN LEASE - \$19/sf/yr + \$3/sf/yr CAM Estimate
\$1,540/Month

Second Generation Salon Space
Ideal for Salon, Spa, or Medical
Aesthetics Users.
Attractive Salon Build-Out
with Modern Finishes.
Reception Area with Client
Waiting Space.
Layout Suitable for Multiple
Styling or Treatment Stations.



Private Treatment Room Potential.
Building Signage Available.
Front Door Client Parking.
Rear Access to All Suites
for Staff Convenience.
Excellent Corner Lot Visibility.
Proximity to Popular Retail & Dining
at Market Place Shopping Center.
Easy Access to I-630 & I-430.

GEORGE PETROV,
PRINCIPAL BROKER



www.p4realtygroup.com



george@p4realtygroup.com

O: 501/224-9600

C: 501/413-3664

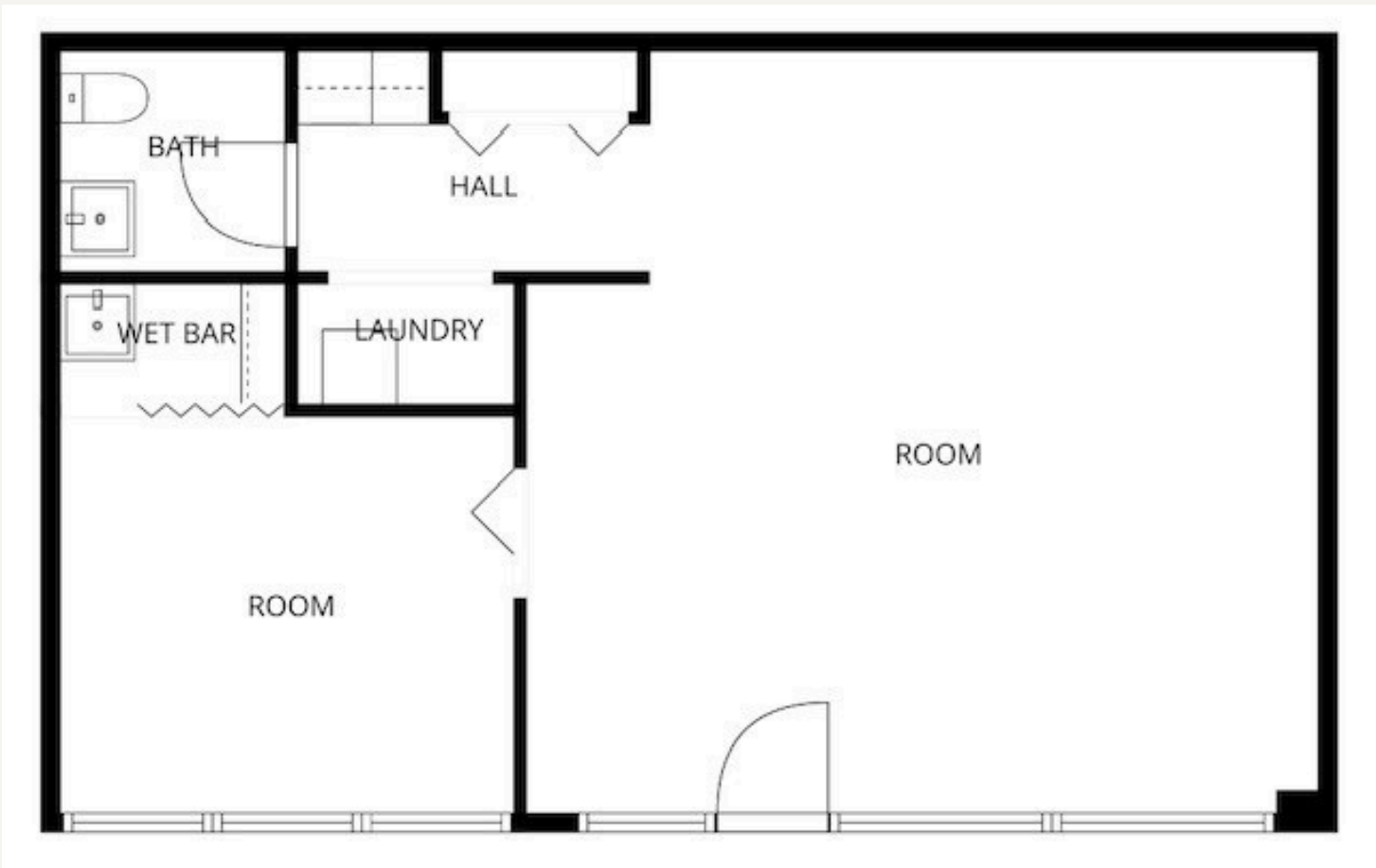
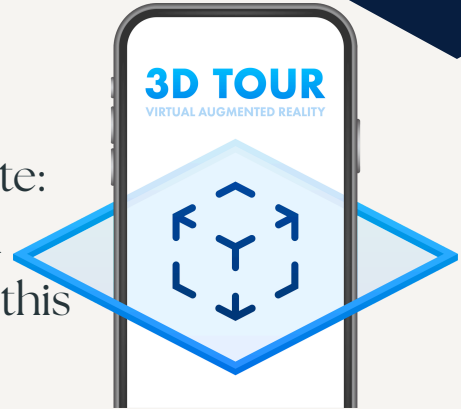
1431 MERRILL DRIVE LITTLE ROCK, AR 72211



Floor Plan

SUITE G - 840 SF +/-

Please visit our website:
P4realtygroup.com
for a 3D virtual tour of this
space.



PRESENTED BY:



GEORGE PETROV

George@P4RealtyGroup.com
501.413.3664

1431 MERRILL DRIVE LITTLE ROCK, AR 72211



Interior Photos

SUITE G - 840 SF +/-



CONTACT FOR
AVAILABILITY:



GEORGE PETROV

George@P4RealtyGroup.com
501.413.3664

1431 MERRILL DRIVE LITTLE ROCK, AR 72211



Location Details

