

**FOR  
LEASE**

## EXCELLENT WAREHOUSE OPPORTUNITY

### 39000 Plymouth Rd, Livonia, MI 48150

- 49,659 Total SF on 3.02 acres
- 41,600 SF Warehouse
- 8,059 SF office
- 3 exterior docks
- 1 - 12'x14' grade level door
- 22' clear height
- ESFR Fire Suppression
- 40' x 40' column spacing
- 70 parking spaces
- 1000 amps @ 277/480 Volt 3-phase power
- LED Lights
- Excellent main-road location



**NEWMARK**

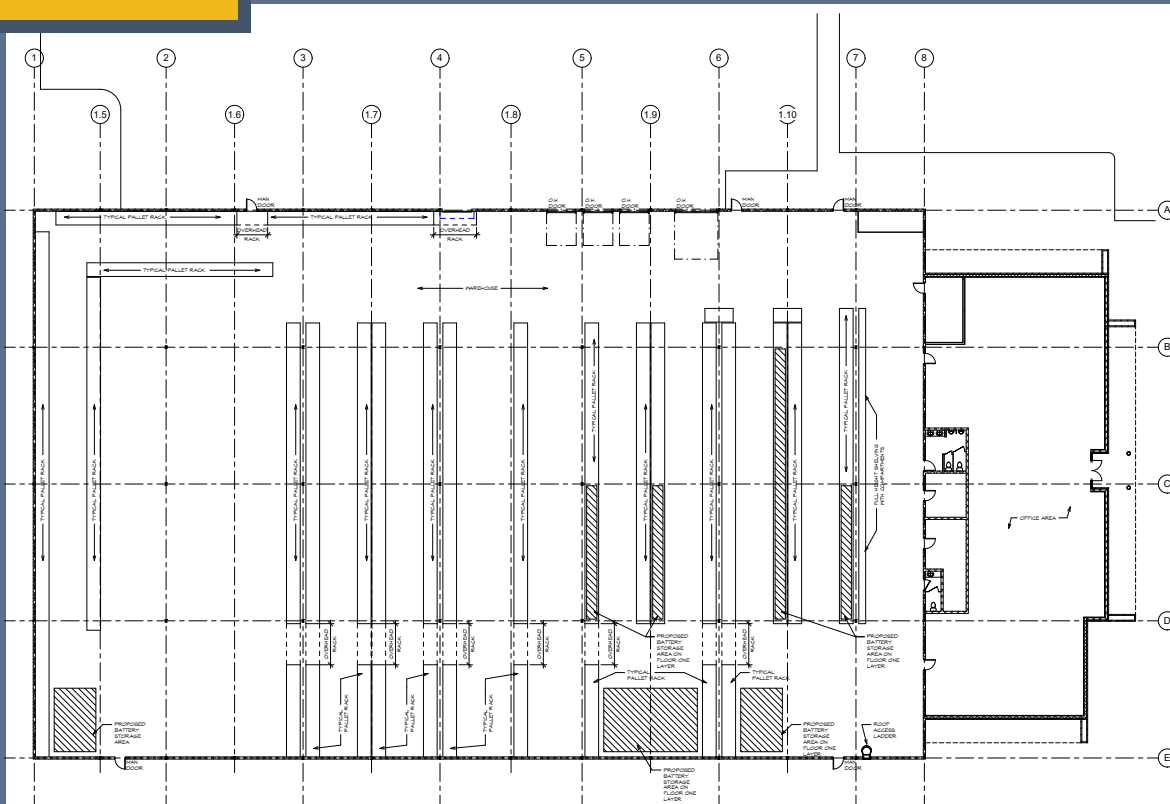
**Tom Oldham**  
Senior Managing Director  
248-357-6595  
Tom.Oldham@nrmk.com

**Dan Labes**  
Executive Managing Director  
248-357-6578  
Dan.Labes@nrmk.com

# Market & Area Overview



# Floor Plan



**Tom Oldham**  
Senior Managing Director  
248-357-6595  
Tom.Oldham@nrmk.com

**Dan Labes**  
Executive Managing Director  
248-357-6578  
Dan.Labes@nrmk.com

