

PRELIMINARY
NOT FOR
CONSTRUCTION

MAXAM
ARCHITECTURE

T (616) 308-9729
maxamarchitecture.com
1464 Fourth St NW
Grand Rapids MI 49504

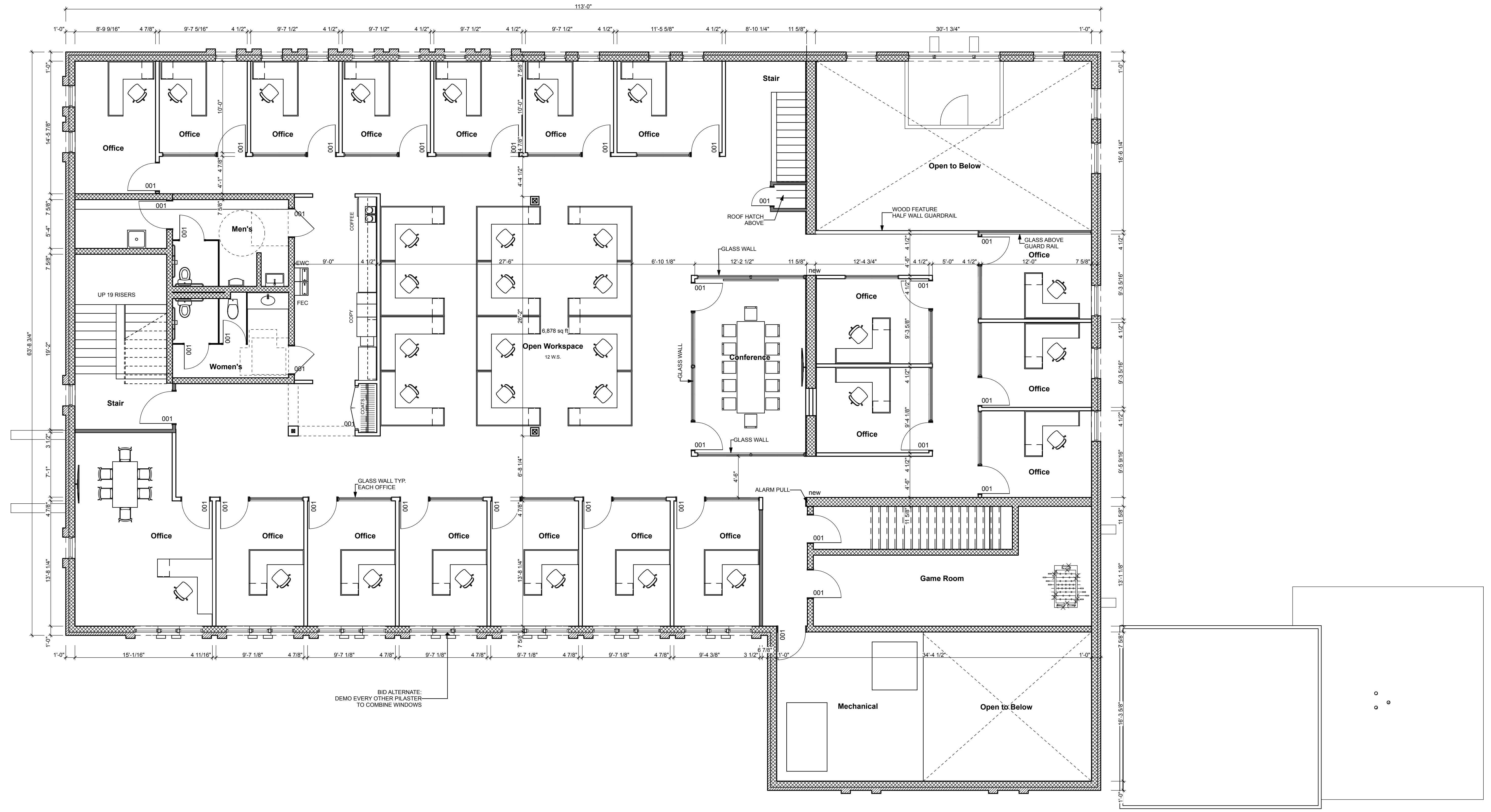
Compass Insurance
280 Ann St, Grand Rapids MI

Second Floor Plan

Revisions:

Project No: 216011
Issue Date: 12/16/16
Plot Date: 12/16/16
Reviewer: DRM
Drawn By: DRM

A-2



1. Second Floor Plan
SCALE: 3/16" = 1'-0"

