



3251 N Glade Rd,
Ste C

Pasco, WA 99301

NAI Tri-Cities



3251 N Glade Road, Ste C

Pasco, Washington 99301 | MLS 29223

Property Overview

Situated on approximately 4-acres and consists of two high-quality commercial buildings totaling 11,850 SF of combined warehouse, retail and office improvements. Both structures are modern, functional and well-maintained, offering flexibility for a wide range of tenants.

Suite C includes 3 large offices, shared access to the conference room, breakroom and restrooms. Annual increase shall be 3% each year. The site provides ample parking, excellent access from N. Glade Rd, and close proximity to Highway 12 and Pasco's growing light industrial corridor.

Property Highlights

- Ample parking
- Easy access to Hwy 12
- Modern design and construction
- High ceilings for spacious feel
- Versatile layout for customization
- Energy-efficient features
- Upgraded amenities
- Prominent signage opportunity
- Large windows for natural light

Offering Summary

Lease Rate:

\$2,674/Mo. (Gross)

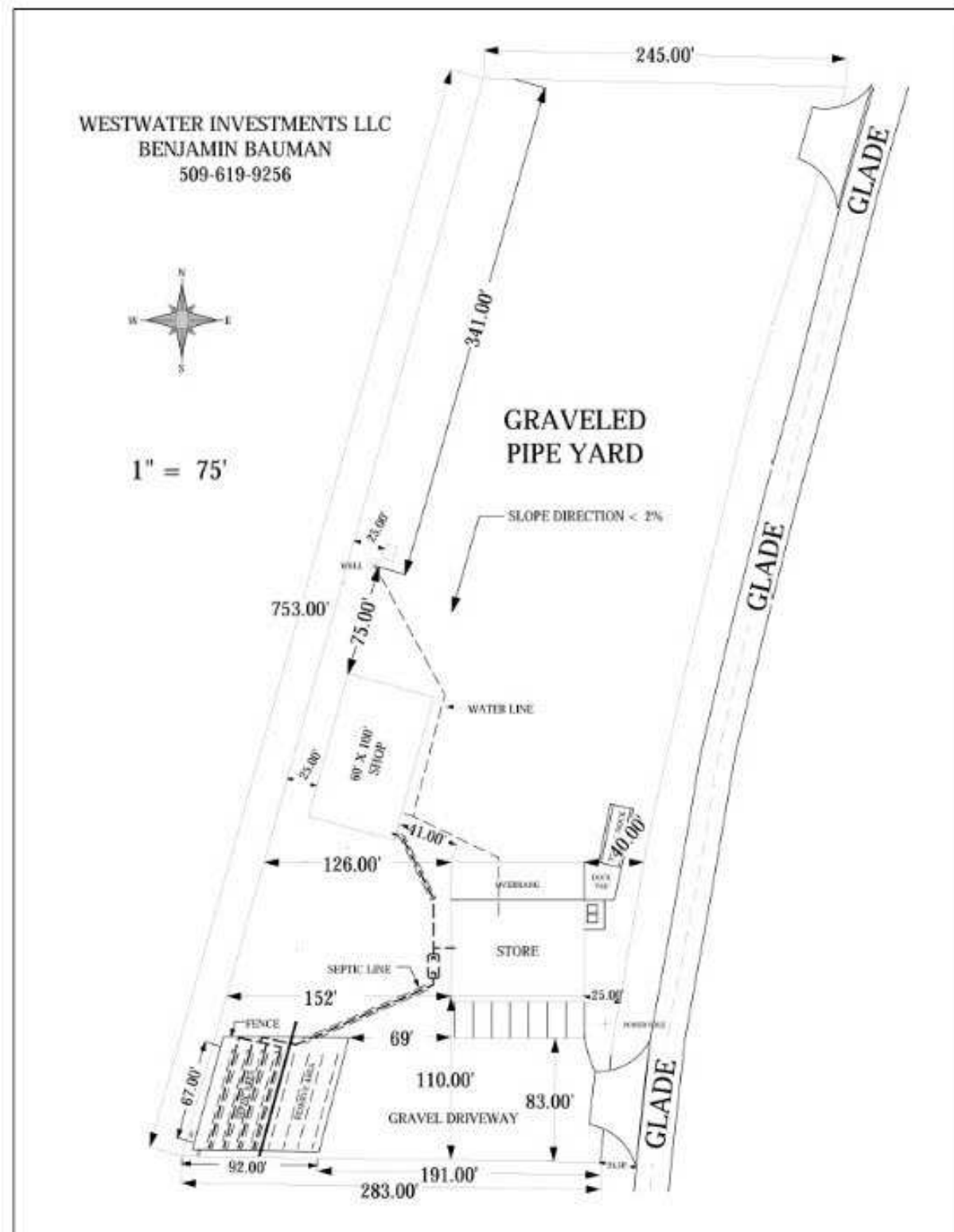
For More Information

Vicki Monteagudo

Designated Broker/Principal

C: 509 405 7044

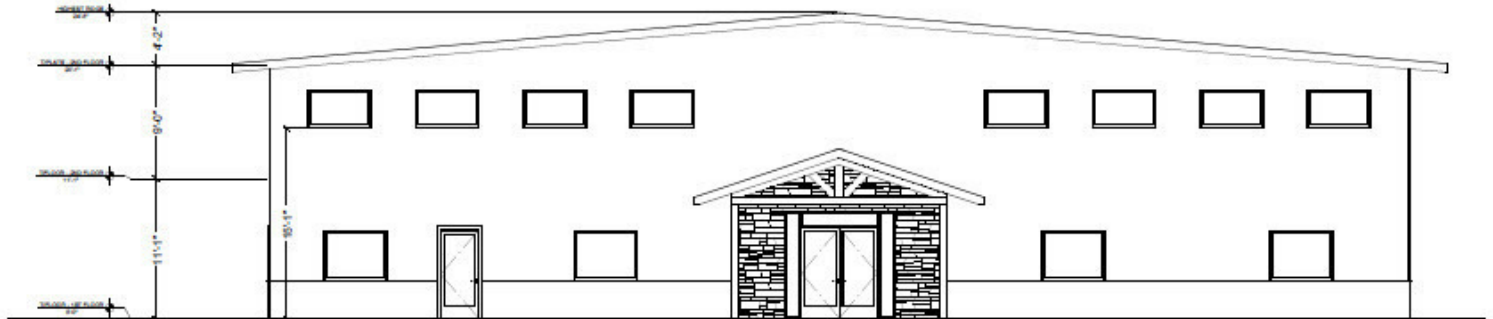
vicki@naitcc.com



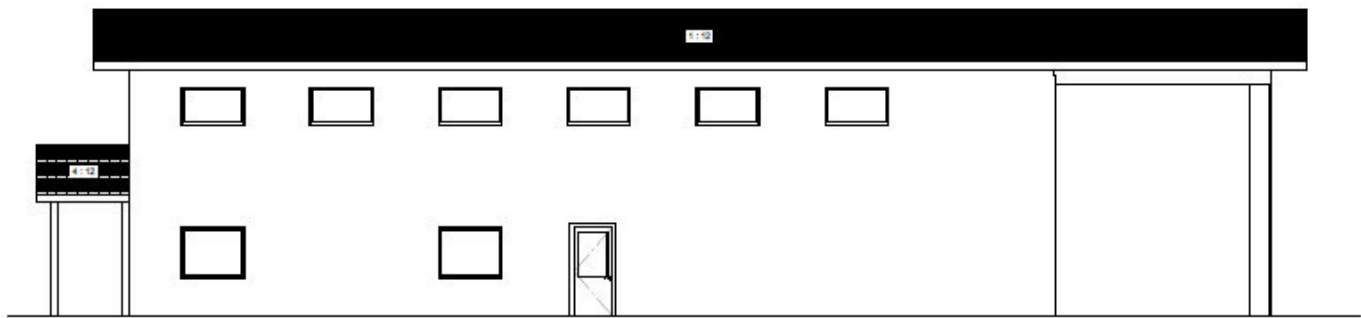




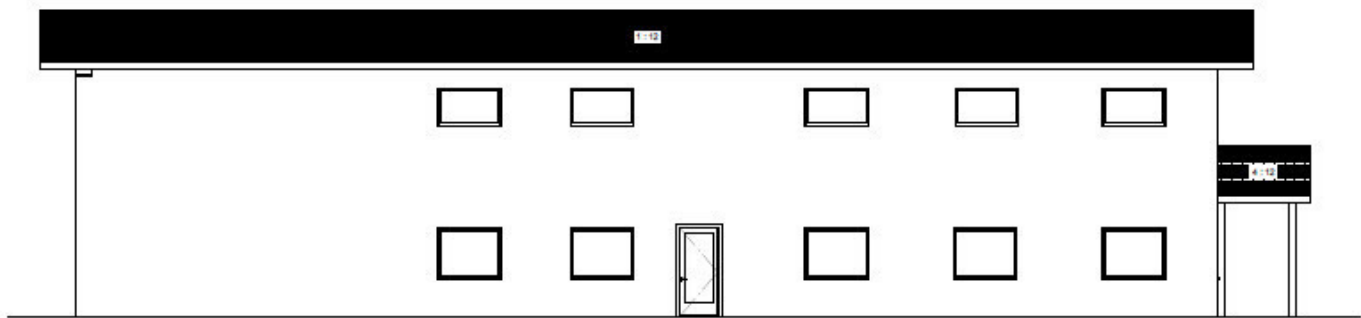




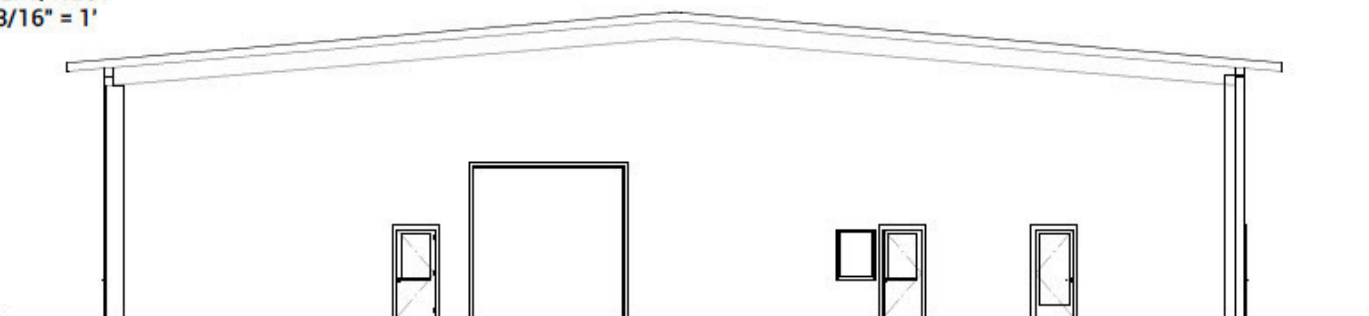
FRONT/SOUTH
3/16" = 1'



RIGHT/EAST
3/16" = 1'

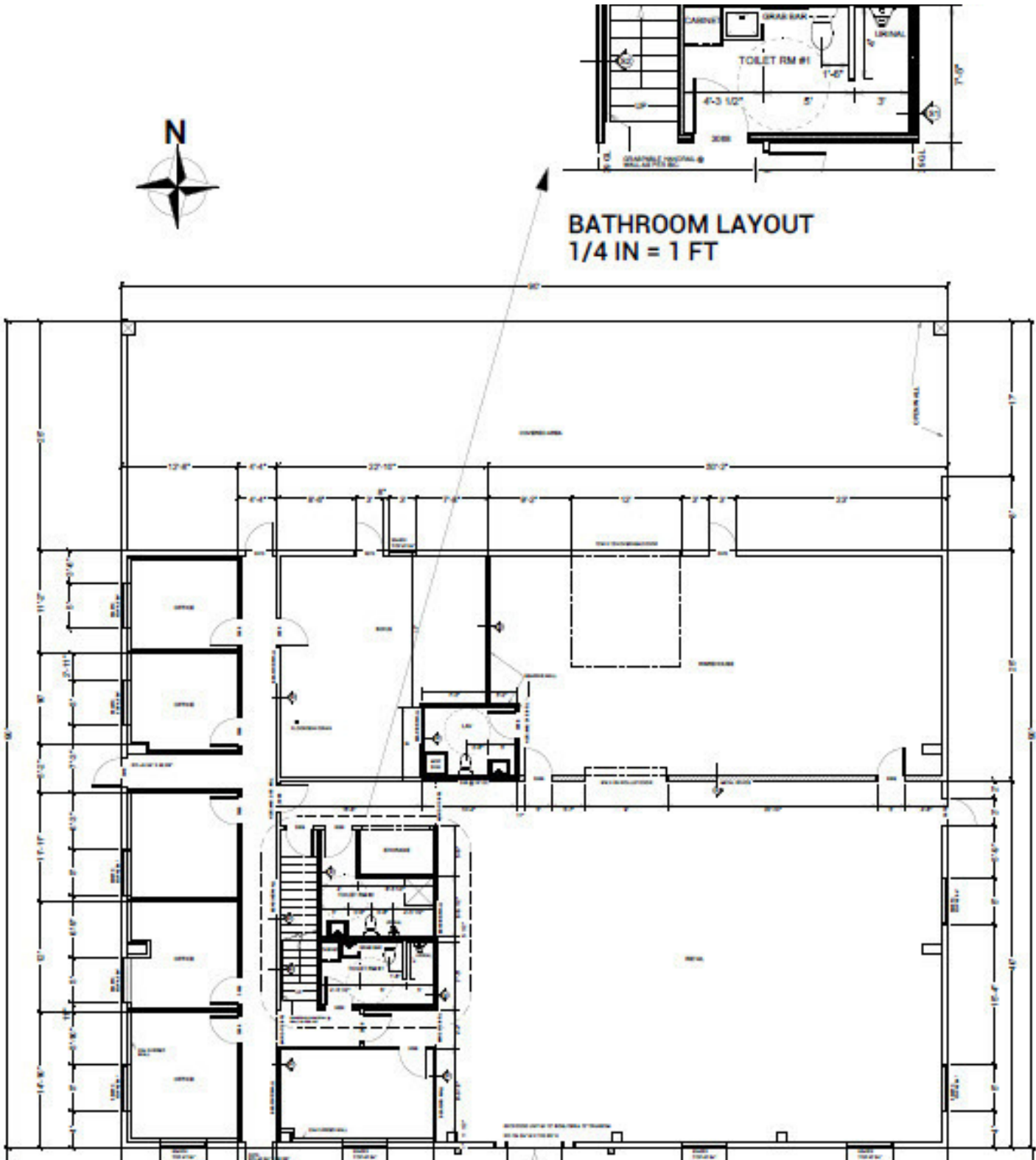


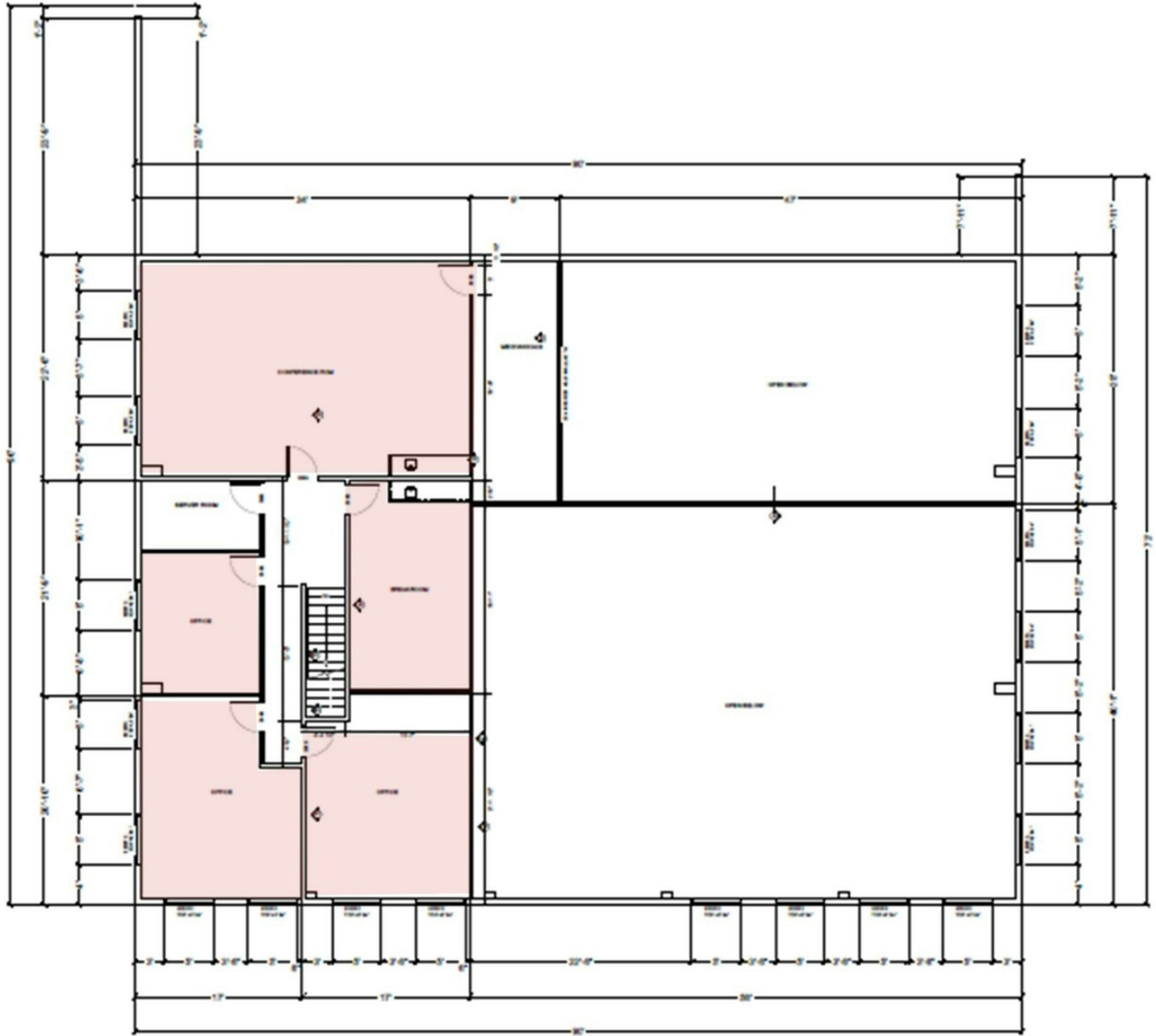
LEFT/WEST
3/16" = 1'



BACK/NORTH
3/16" = 1'

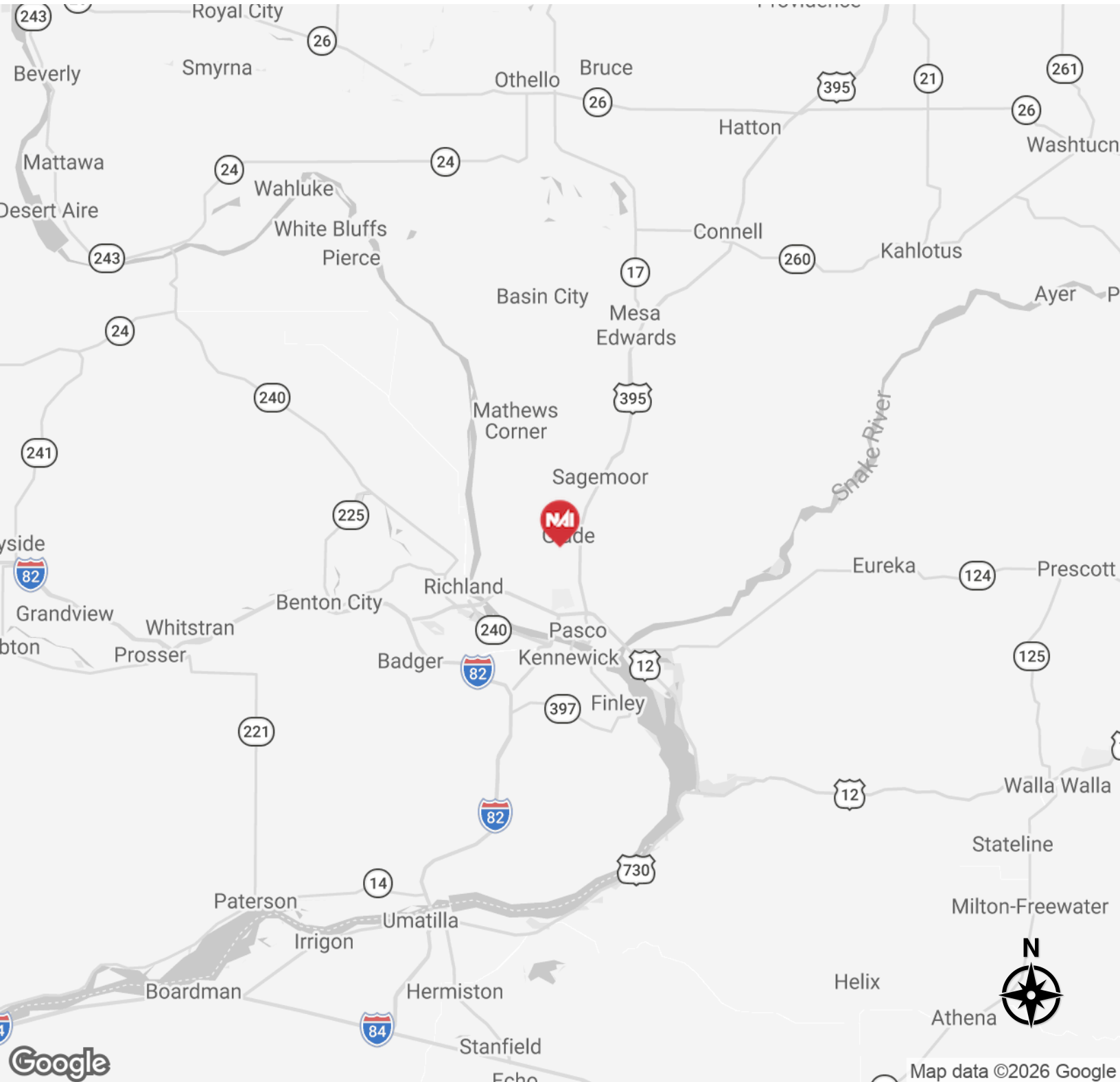
For Lease
871 SF | \$2,674 per month
Industrial Space





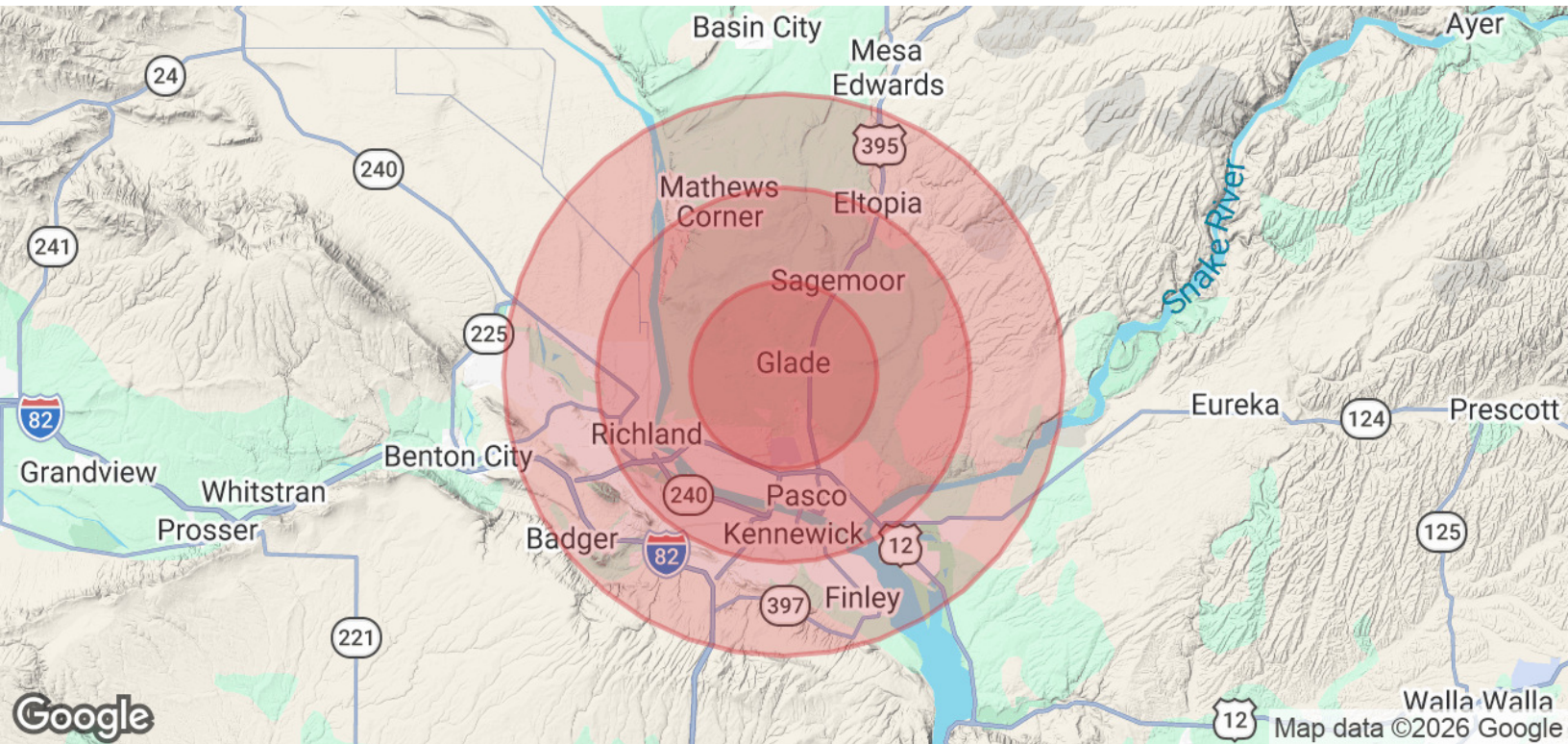
2ND FLOOR
1/8 IN = 1 FT

WALL SCHEDULE	
	EXTERIOR WALL - METAL FRAMING AS PER PLAN
	INTERIOR WALL - METAL STUD FRAMING
	INTERIOR WALL - 2X4 @ 16" OC
	INTERIOR WALL - 2X4 @ 16" OC W/ SOUND INSULATION
	INTERIOR PLUMBING WALLS: 2X6 @ 16" OC W/ SOUND INSULATION



FLYER | 3251 N Glade Road, Ste C Pasco, WA 99301

We obtained the information above from sources we believe to be reliable. However, we have not verified its accuracy and make no guarantee, warranty or representation about it. It is submitted subject to the possibility of errors, omissions, change of price, rental or other conditions, prior sale, lease or financing, or withdrawal without notice. We include projections, opinions, assumptions or estimates for example only, and they may not represent current or future performance of the property. You and your tax and legal advisors should conduct your own investigation of the property and transaction.



Population	5 Miles	10 Miles	15 Miles
Total Population	27,859	200,749	270,565
Average Age	30.1	34.0	35.2
Average Age (Male)	31.7	33.8	35.0
Average Age (Female)	29.1	34.7	35.9
Households & Income	5 Miles	10 Miles	15 Miles
Total Households	8,381	70,661	94,568
# of Persons per HH	3.3	2.8	2.9
Average HH Income	\$124,030	\$98,193	\$110,804
Average House Value	\$432,484	\$354,469	\$389,015

2023 American Community Survey (ACS)