

Fully Functioning Stamping Plant

FOR SALE

18,800 SF

35588 Veronica St
Livonia, MI 48150



AVAILABLE:

18,800 SF

SALE PRICE: \$1,499,999

\$79.79/SF (Building)

Equipment Sale Possible: \$3,000,000

USES:

Industrial, Manufacturing,

LOCATION:

Located on Veronica St. in-between
Plymouth Rd and Schoolcraft Rd

SUMMARY:

This fully functioning stamping plant is currently for sale. Building, Business, and Equipment all available. Equipment List Attached.

F
O
R
S
A
L
E



Scott McGinnis
Associate Broker
734.444.7716 Mobile
734.855.7010 Office

smcginnis@acresgroupmi.com

Matthew McGinnis
Associate Broker
734.556.0047 Mobile
734.855.7010 Office

mmcginnis@acresgroupmi.com

Drew Sparks
Sales Associate
947.281.6792 Mobile
734.855.7010 Office

dsparks@acresgroupmi.com

18,800 SF FOR SALE



YEAR BUILT:

Built 1978

LOT SIZE:

1.30 Acres

PROPERTY INFO:

- Very Heavy Power
- 1000 Amps
- 1 Truckwell
- 18' - 45' Ft Clear Warehouse
- Outside Storage
- 4 Overhead Doors (12x14 & 14x16)
- Airlines
- Radiant Heat
- Buss Bars
- Fully Functioning Stamping Plant



Scott McGinnis
Associate Broker
734.444.7716 Mobile
734.855.7010 Office

smcginnis@acresgroupmi.com

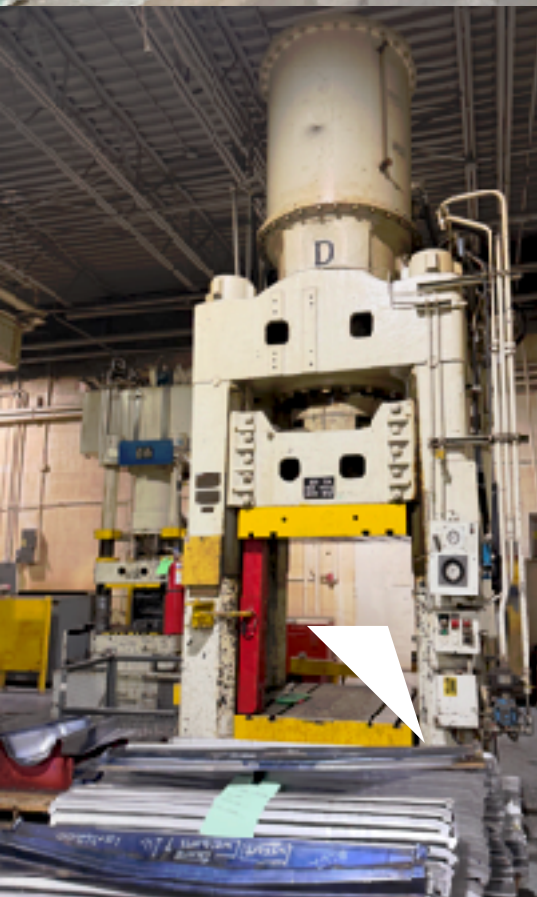
Matthew McGinnis
Associate Broker
734.556.0047 Mobile
734.855.7010 Office

mmcginnis@acresgroupmi.com

Drew Sparks
Sales Associate
947.281.6792 Mobile
734.855.7010 Office

dsparks@acresgroupmi.com

18,800 SF FOR SALE



Scott McGinnis
Associate Broker
734.444.7716 Mobile
734.855.7010 Office

smcginnis@acresgroupmi.com

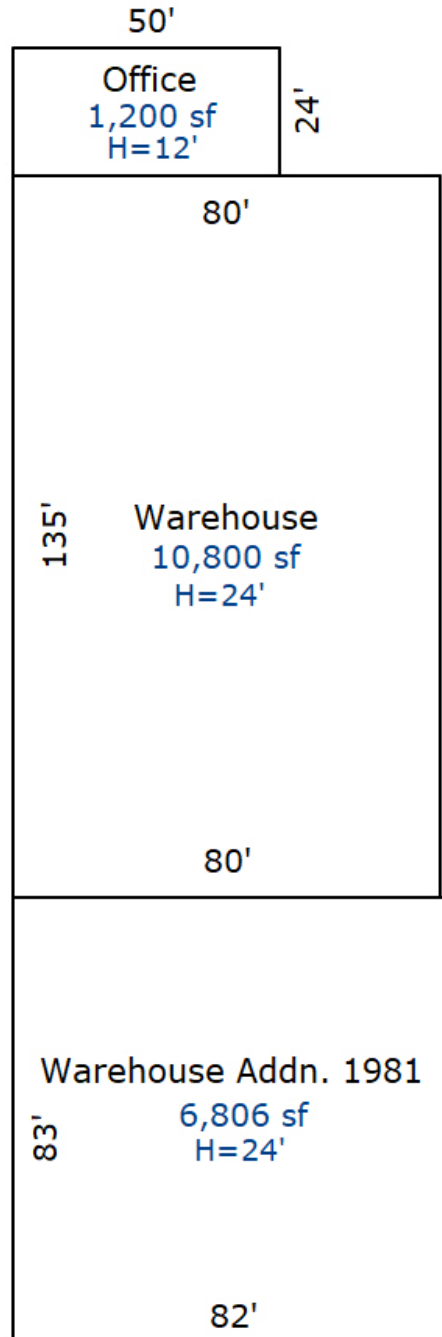
Matthew McGinnis
Associate Broker
734.556.0047 Mobile
734.855.7010 Office

mmcginnis@acresgroupmi.com

Drew Sparks
Sales Associate
947.281.6792 Mobile
734.855.7010 Office

dsparks@acresgroupmi.com

Veronica Dr.



Scott McGinnis
Associate Broker
734.444.7716 Mobile
734.855.7010 Office
smcginnis@acresgroupmi.com

Matthew McGinnis
Associate Broker
734.556.0047 Mobile
734.855.7010 Office
mmcginnis@acresgroupmi.com

Drew Sparks
Sales Associate
947.281.6792 Mobile
734.855.7010 Office
dsparks@acresgroupmi.com

smcginnis@acresgroupmi.com mmcginnis@acresgroupmi.com dsparks@acresgroupmi.com

Partial Machine Inventory List

- (1) 800 Ton Toledo- Bliss Press
- (1) 1,000 Ton Hydraulic Gate Press 1985
- (1) 1,500 Ton Williams & White Press 1974 w/ new controllers
- (1) 12-1800 Ton Toggle Press
- (1) 800 Ton Bliss Press unused since 2010
- (1) 800 Ton Dominion Rapid Press – can be used for forging
- (1) 600 Ton Date Press w/ all rebuilt hydraulics, valves & pumps
- (1) 250 Ton Little Press
- (1) 350 Ton Lawton Press w/ rebuilt valves, new controller
- (1) 500 Ton Williams & White
- (2) Taurus's #1 60"x60" bed-p low hours roughly 3,500 hrs.
- #2 new 1988 5'x12' bed w/ pneumatic controls + software
- Bridgeport & Lathe
- (1) 10' Medera- New 2001
- (1) 150 Ton Medera Press Brake w/ cnc controller + software
- (1) 5 axis MITS V2_20 4,000 watt new 2010 w/ welding cap
- Multiple cranes-10 Ton, 20 Ton
- Taylor Lift Truck- 30,000 lb capacity
- 8,000 Cat

There are other miscellaneous ancillary pieces of machinery and equipment, but this is a list of the major components.



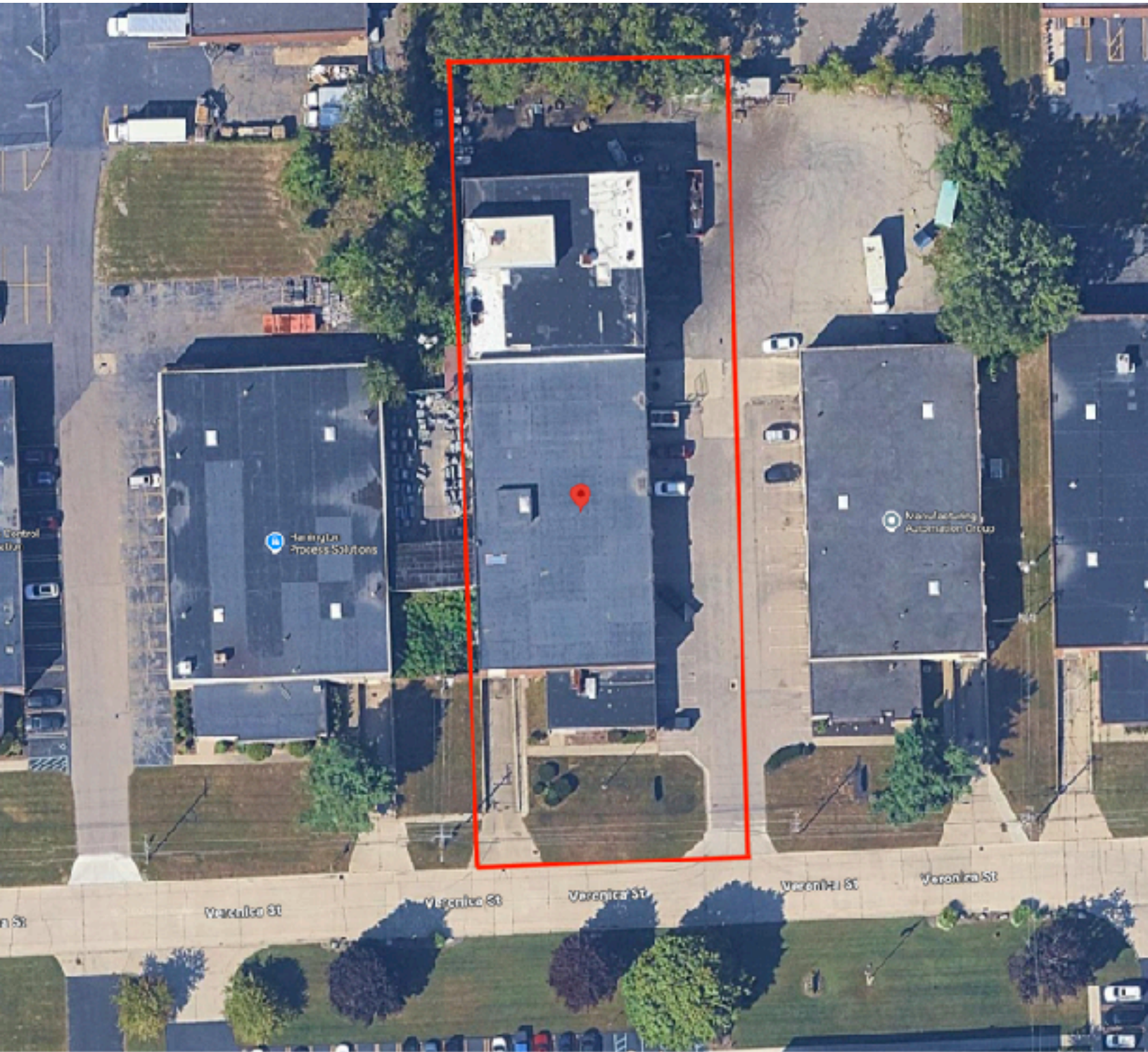
Scott McGinnis
Associate Broker
734.444.7716 Mobile
734.855.7010 Office
smcginnis@acresgroupmi.com

Matthew McGinnis
Associate Broker
734.556.0047 Mobile
734.855.7010 Office
mmcginnis@acresgroupmi.com

Drew Sparks
Sales Associate
947.281.6792 Mobile
734.855.7010 Office
dsparks@acresgroupmi.com

18,800 SF FOR SALE

AERIAL MAP



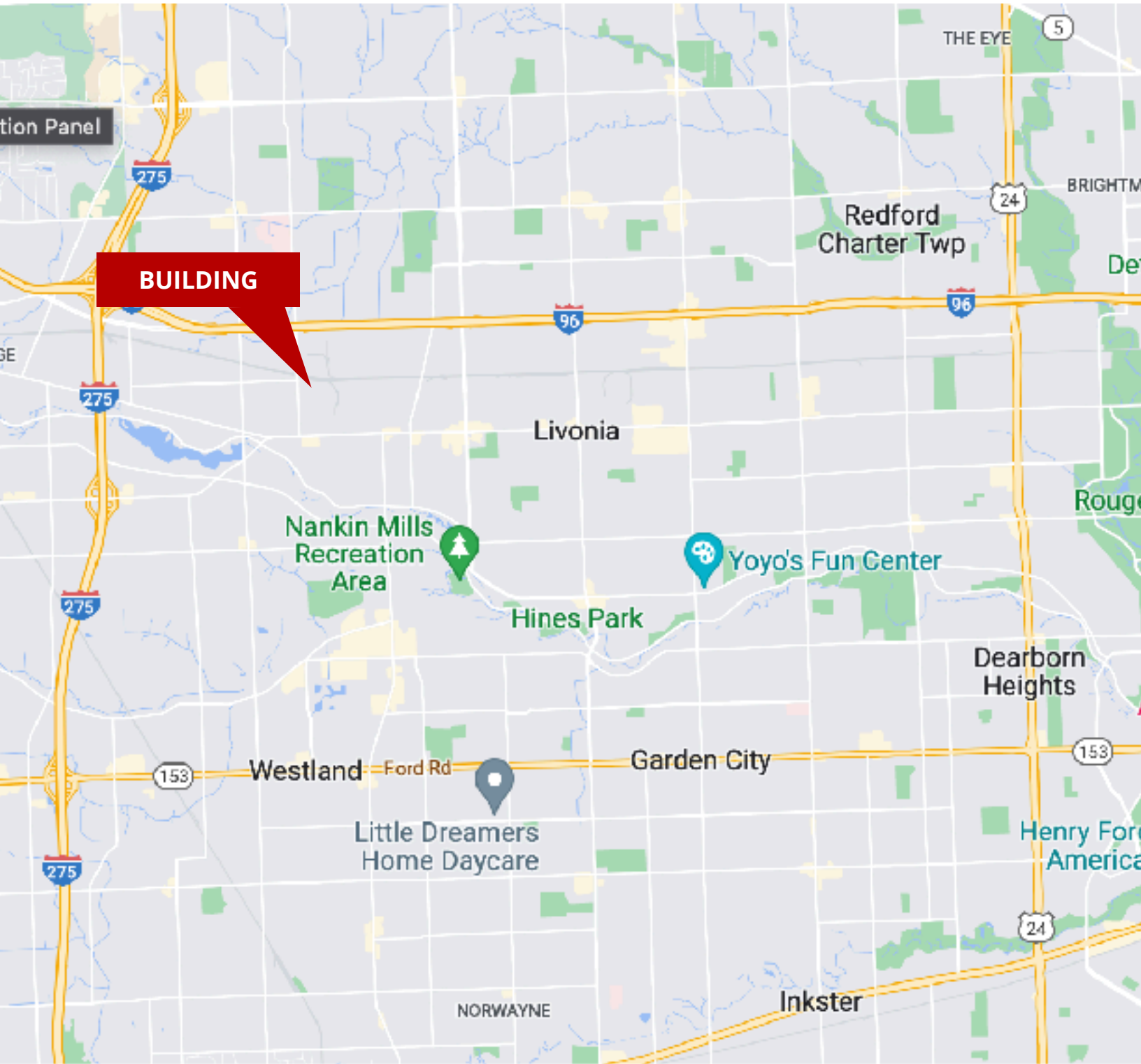
Scott McGinnis
Associate Broker
734.444.7716 Mobile
734.855.7010 Office
smcginnis@acresgroupmi.com

Matthew McGinnis
Associate Broker
734.556.0047 Mobile
734.855.7010 Office
mmcginnis@acresgroupmi.com

Drew Sparks
Sales Associate
947.281.6792 Mobile
734.855.7010 Office
dsparks@acresgroupmi.com

18,800 SF FOR SALE

STREET MAP



Scott McGinnis
Associate Broker
734.444.7716 Mobile
734.855.7010 Office
smcginnis@acresgroupmi.com

Matthew McGinnis
Associate Broker
734.556.0047 Mobile
734.855.7010 Office
mmcginnis@acresgroupmi.com

Drew Sparks
Sales Associate
947.281.6792 Mobile
734.855.7010 Office
dsparks@acresgroupmi.com