



AVAILABLE FOR LEASE

3509 Haworth Dr.

NORTH HILLS PROFESSIONAL PARK
464-3,306 SQ. FT.



Welcome to North Hills Professional Park, offering a wide range of office and medical office space. The property is conveniently located off Six Forks Rd, neighboring the North Hills Shopping districts.

PROPERTY HIGHLIGHTS

- Easy access to the beltline
- Ample parking
- Walking distance to North Hills
- **Rental Rate: \$26.50-\$30.00 SF FS**

CONTACT

Tyler Christensen, Broker
(C) 828.999.9459
tchristensen@atlasstark.com

Floorplan

Floor 1

ATLAS  STARK

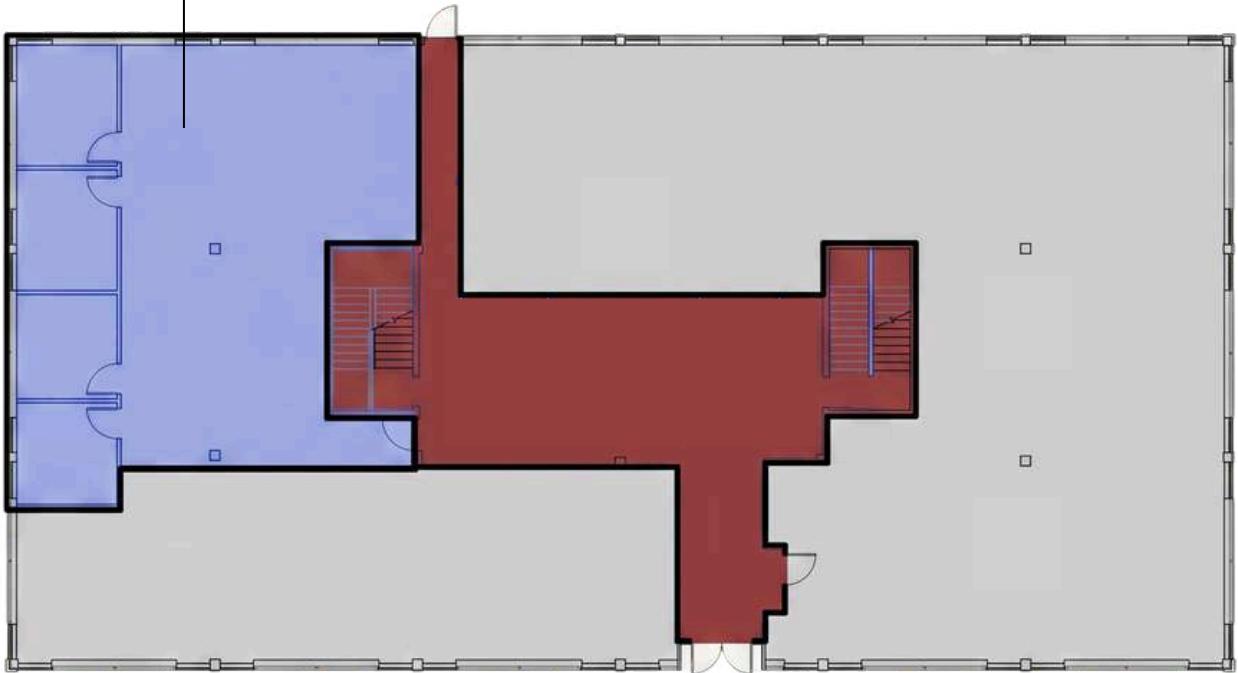
SUITE

SIZE

Suite 115

1,873 SF

SUITE 115
1,873 SQ. FT.

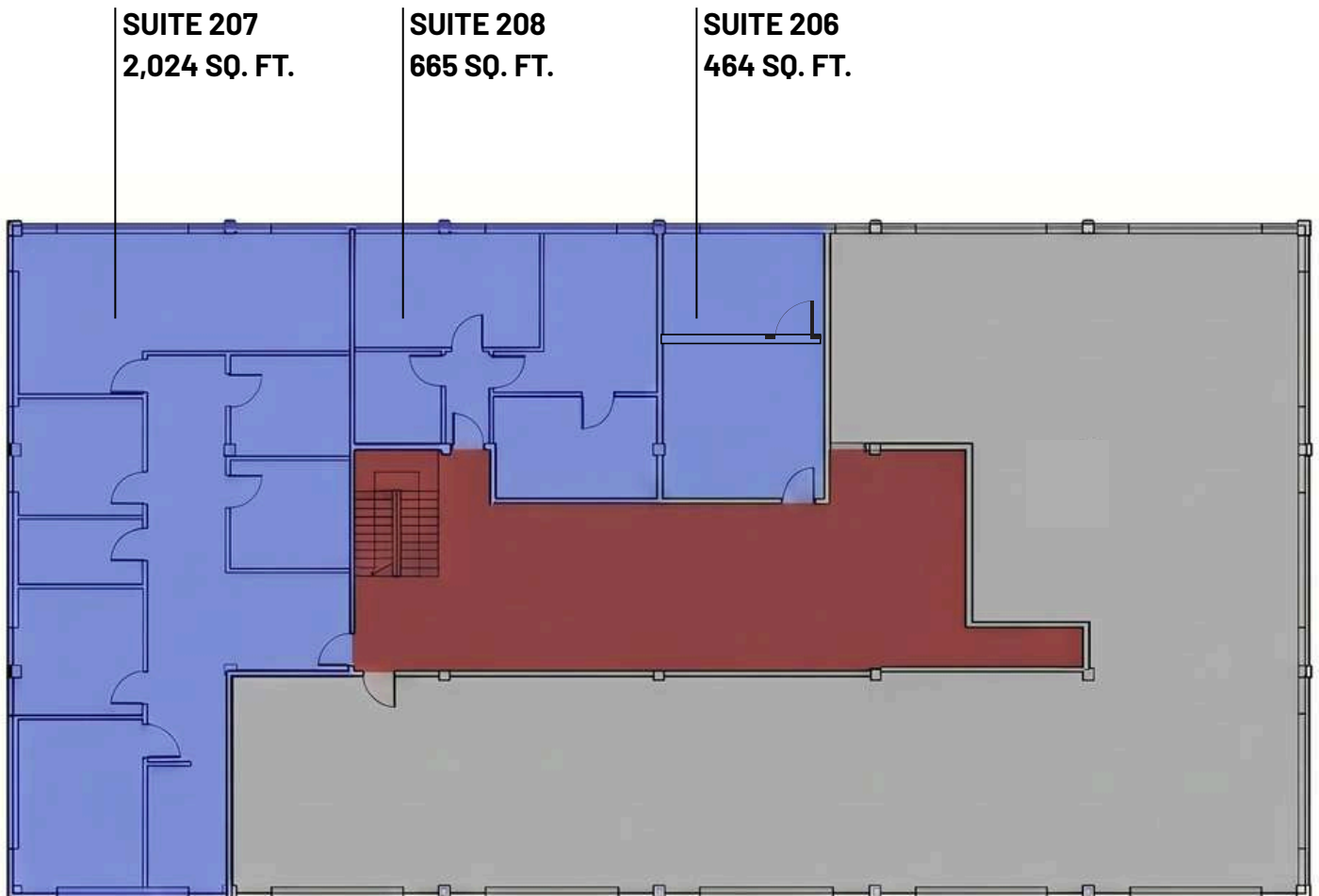


Floorplan

Floor 2

SUITE	SIZE
Suite 206	484 SF
Suite 207	2,024 SF
Suite 208	665 SF

Suites can be combined.

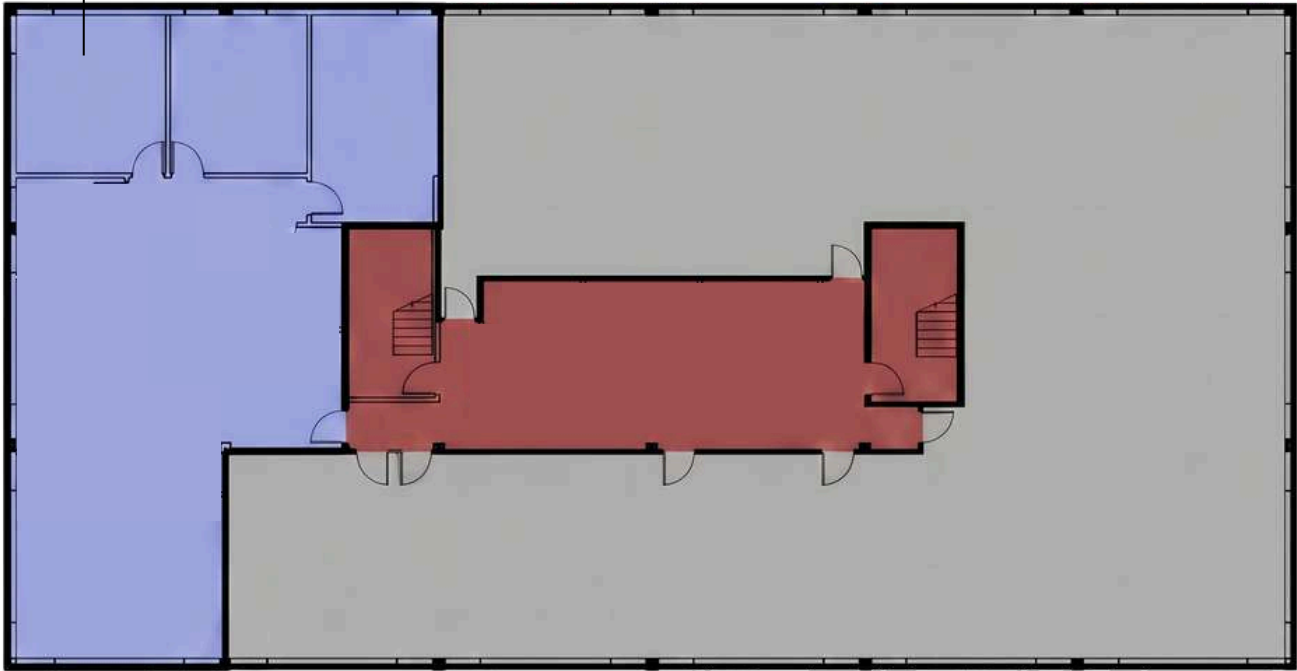


Floorplan

Floor 3

SUITE	SIZE
Suite 305	2,234 SF

SUITE 305
2,234 SQ. FT.

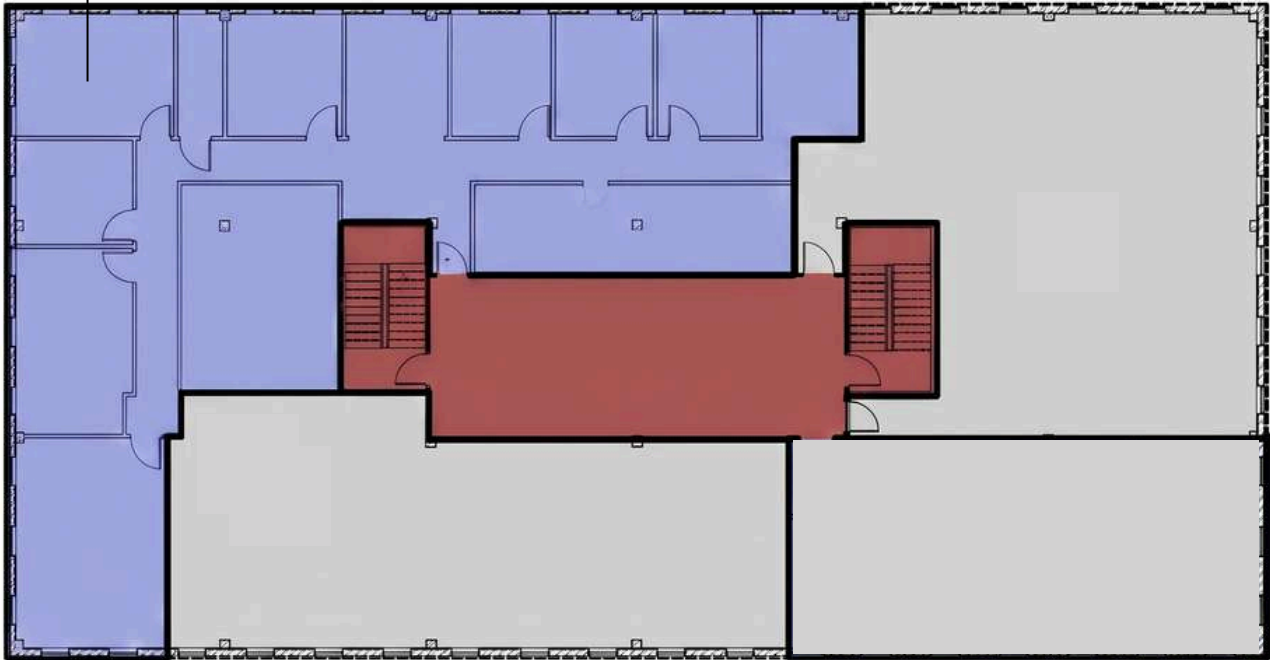


Floorplan

Floor 4

SUITE	SIZE
Suite 400	3,306 SF

SUITE 400
3,306 SQ. FT.



NEIGHBORHOOD OVERVIEW



LOCAL AMENITIES

