

01 Preliminary Plan

Scale: 1/8" = 1'-0"



CODE INFORMATION

CODE COMPLIANCE

BUILDING	- 2015 IBC
FIRE SAFETY	- 2015 IFC
MECHANICAL	- 2015 IMC
PLUMBING	- 2015 IPC
ELECTRICAL	- 2020 NEC
ENERGY	- 2015 IECC
ACCESSIBILITY	- 2012 TAS

OTHER

FULLY FIRED SPRINKLERED OCCUPANCY GROUP	- YES
	- BUSINESS

OCCUPANCY LOAD

OCCUPANT USE	AREA (S.F.)	LOAD FACTOR	# OF OCCUPANTS
B OCCUPANCY	2369	100	24
A3 OCCUPANCY	0	15	0
TOTAL	2369		24

EGRESS

100'	COMMON PATH OF EGRESS (MAX. ALLOWED)
89'	COMMON PATH OF EGRESS (ACTUAL)
1	EXITS (MIN. REQUIRED)
1	EXITS (ACTUAL)

LEGEND

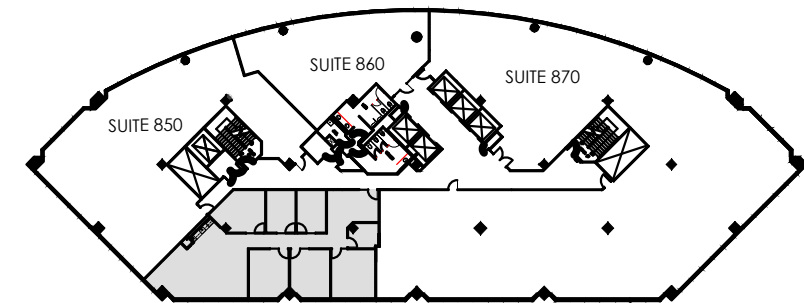
(ALL SYMBOLS MAY NOT APPLY)

	EXISTING PARTITION		SIDE LIGHT/WINDOW
	NEW PARTITION		PHONE BOARD
	DEMISING PARTITION W/ SOUND INSULATION		WATER LINE W/ SHUT-OFF VALVE
	PARTITION W/ SOUND INSULATION		FIRE EXTINGUISHER W/ CABINET
	ONE HOUR PARTITION		FIRE EXTINGUISHER ON HOOK
	TWO HOUR PARTITION		

THIS PLAN IS SUBJECT TO APPROVAL BY THE MUNICIPAL CODE AUTHORITIES.

THESE DOCUMENTS ARE INCOMPLETE AND MAY NOT BE USED FOR REGULATORY APPROVAL, PERMIT OR CONSTRUCTION.

ROOM SIZES ARE APPROXIMATE ONLY AND ARE NOT TO BE USED FOR FINAL DETERMINATION OF FURNITURE SIZES OR PLACEMENT.



Key Plan
Not to Scale

