

**11,208 SF RETAIL
BUILDING AVAILABLE**



FORMER RITE AID BUILDING
2709 Broadway Ave, Lorain, OH 44055

Vincenzo Calabrese
VincenzoCalabrese@HannaCRE.com
216.861.5286

CONTACT:
Tom Grasso
TomGrasso@HannaCRE.com
216.861.5429

11,208 SF RETAIL BUILDING AVAILABLE

2709 Broadway Ave, Lorain, OH 44055

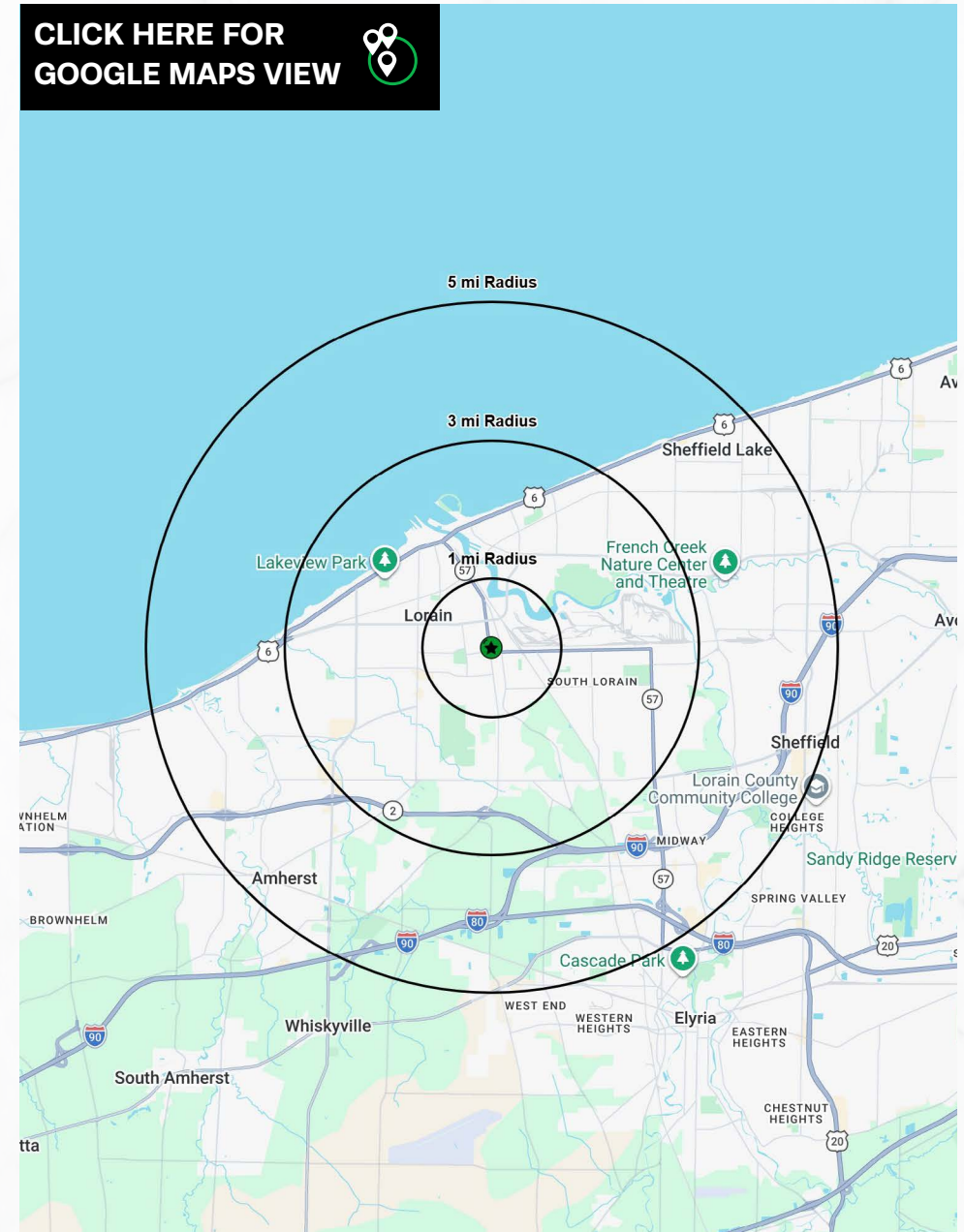
PROPERTY OVERVIEW

PROPERTY SUMMARY

- Freestanding 11,208 SF former Rite Aid Available
- Zoning: General Commercial (B-2)
- New Roof in 2023 and 3 Brand New HVAC units!
- Building has an attached drive thru on the North end of the property
- Combined traffic counts of 20,904 vpd at the intersections of Broadway Ave and E 28th
- Join Walgreens, Dairy Mart, AutoZone, Rent-A-Center, Advanced Auto, Little Caesars Pizza, & many more!

DEMOGRAPHICS	1-MILE	3-MILE	5-MILE
POPULATION	11,805	63,184	105,639
HOUSEHOLDS	4,438	26,330	44,676
AVERAGE HH INCOME	\$60,169	\$64,465	\$80,406
MEDIAN HH INCOME	\$46,406	\$49,540	\$60,900
DAYTIME POPULATION	7,017	38,562	69,762

CLICK HERE FOR
GOOGLE MAPS VIEW



11,208 SF RETAIL BUILDING AVAILABLE

2709 Broadway Ave, Lorain, OH 44055

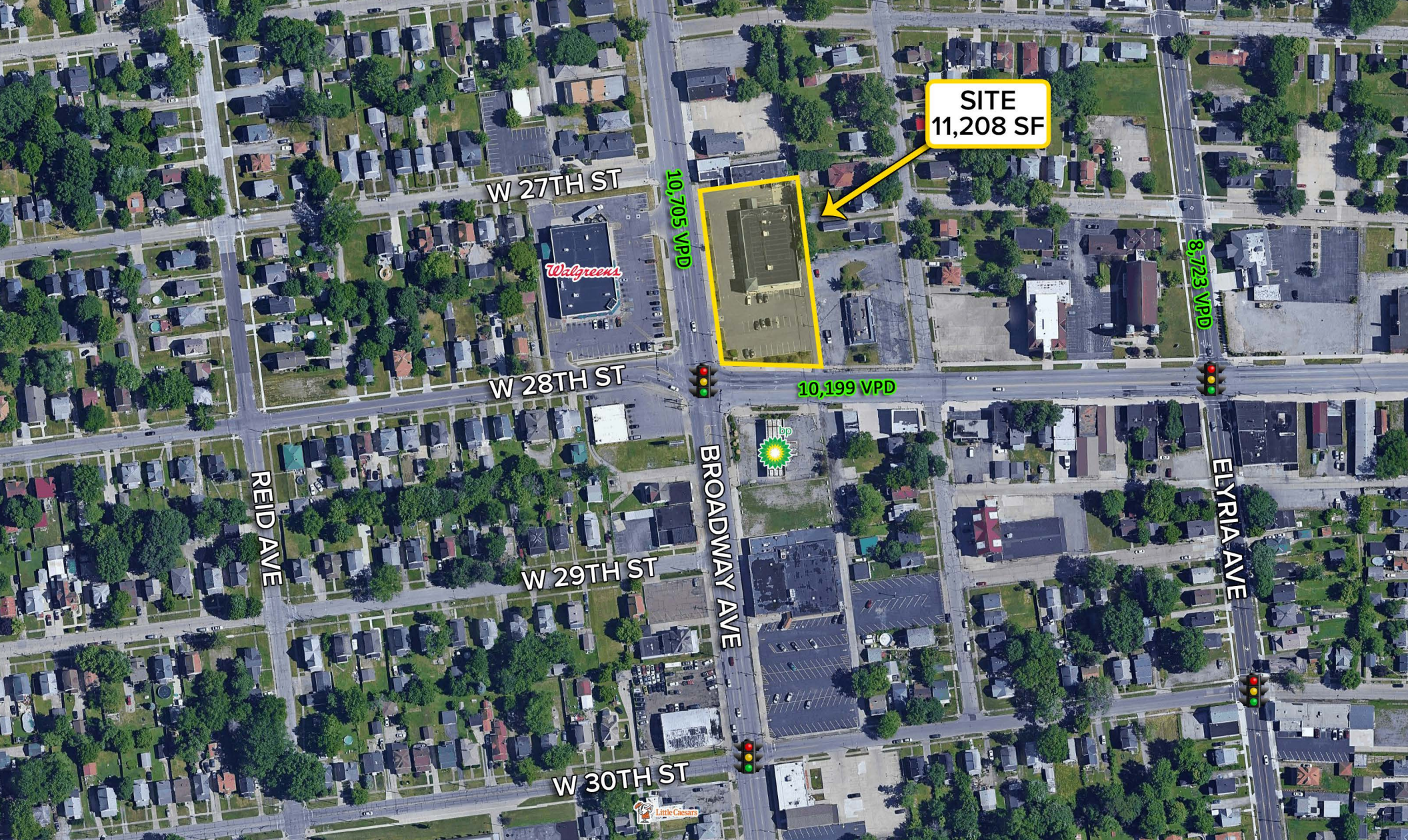
PICTURES



11,208 SF RETAIL BUILDING AVAILABLE

2709 Broadway Ave, Lorain, OH 44055

MICRO AERIAL



11,208 SF RETAIL BUILDING AVAILABLE

2709 Broadway Ave, Lorain, OH 44055

MACRO AERIAL

