



CLT
LOGISTICS
CENTER

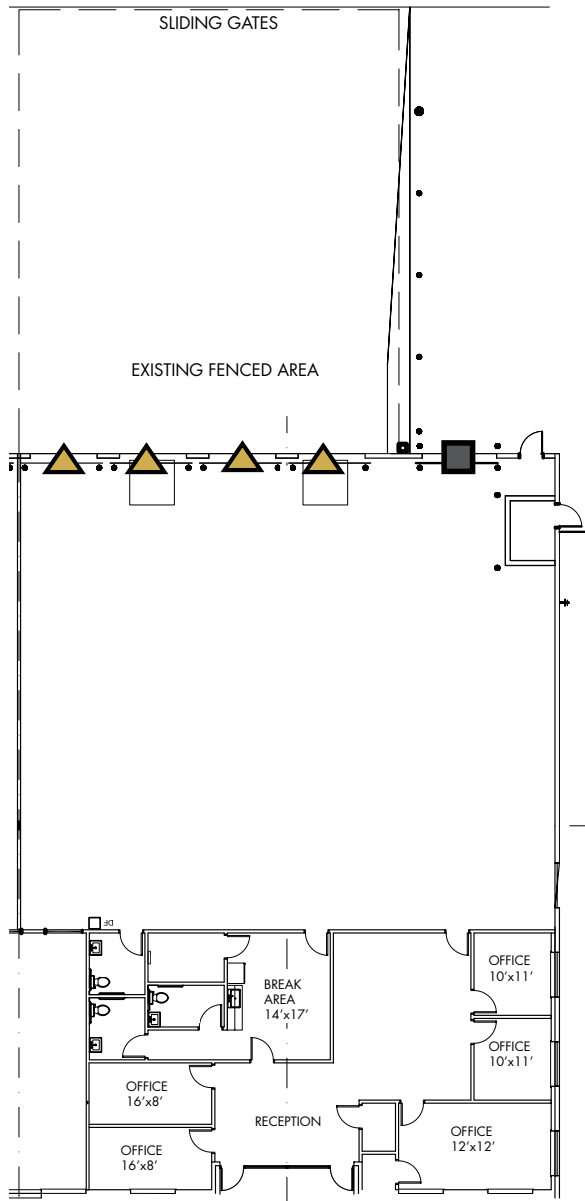
3400 INTERNATIONAL AIRPORT DR
SUITE 100

CHARLOTTE, NORTH CAROLINA

THE
MERITEX[®]
COMPANY
ESTD 1916

6,861 SF AVAILABLE FOR LEASE

3400 INTERNATIONAL AIRPORT DR SUITE 100



4,586 SF WAREHOUSE
2,275 SF OFFICE

6,861 SF Total

 DOCK HIGH DOOR  DRIVE-IN DOOR

SPACE FEATURES

6,861 SF Total Available

- 2,275 SF Office
- 4 Dock High Doors
- 1 Drive In Door
- 18' Clear Height
- 2 Pit Levelers
- Wet Sprinkler System
- T-5 Lighting
- I-2 Zoning
- 400 Amp, 480v Power Service



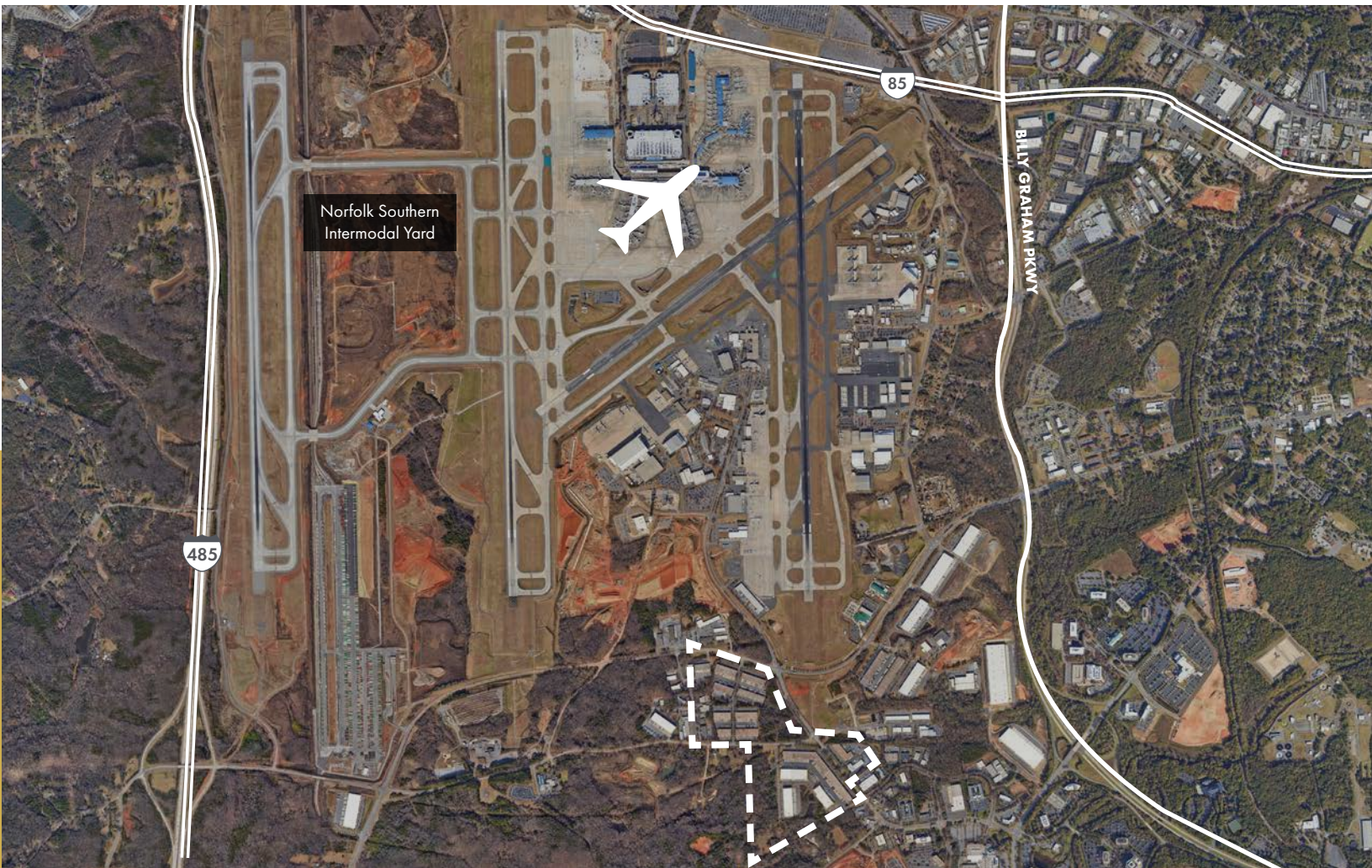
THE
MERITEX[®]
COMPANY
ESTD 1916

OWNERSHIP - THE MERITEX COMPANY

Meritex is a 109-year-old, family-owned company with a focus on light industrial properties, committed to providing exceptional spaces and service, allowing businesses to focus on their work at hand. Meritex strategically expands within key markets, ensuring that their properties and growth rate are in sync with their tenants' needs and ambitions. And once you're in a Meritex building, you can be assured that an expert local team is on hand when you need them.

CLT  **LOGISTICS CENTER**

CLT Logistics is a 797,342 square foot light industrial park with 14 Class A buildings. It is located just south of Charlotte Douglas International Airport with easy access to I-77, I-85 and I-485. The buildings feature suppression systems, dock high loading, drive-in doors, and generous parking.





SUITE NO.	TENANT	SF
3401	INTERNATIONAL AIRPORT DRIVE	43,345
3400	INTERNATIONAL AIRPORT DRIVE	42,088
3301	INTERNATIONAL AIRPORT DRIVE	40,920
3300	INTERNATIONAL AIRPORT DRIVE	46,977
3400	INTERNATIONAL AIRPORT DRIVE	42,000
3201	INTERNATIONAL AIRPORT DRIVE	31,725
3200	INTERNATIONAL AIRPORT DRIVE	41,146
3101	INTERNATIONAL AIRPORT DRIVE	28,138
3100	INTERNATIONAL AIRPORT DRIVE	50,356
3140	YORKMONT RD	43,341
3100	YORKMONT RD	22,111
3101	YORKMONT RD	192,874

FOR MORE INFORMATION, PLEASE CONTACT:

CASEY MULHERN

Senior Vice President
704.705.1182

casey.mulhern@foundrycommercial.com

BRIAN CRAVER, CCIM

Senior Vice President
704.319.5072

brian.craver@foundrycommercial.com