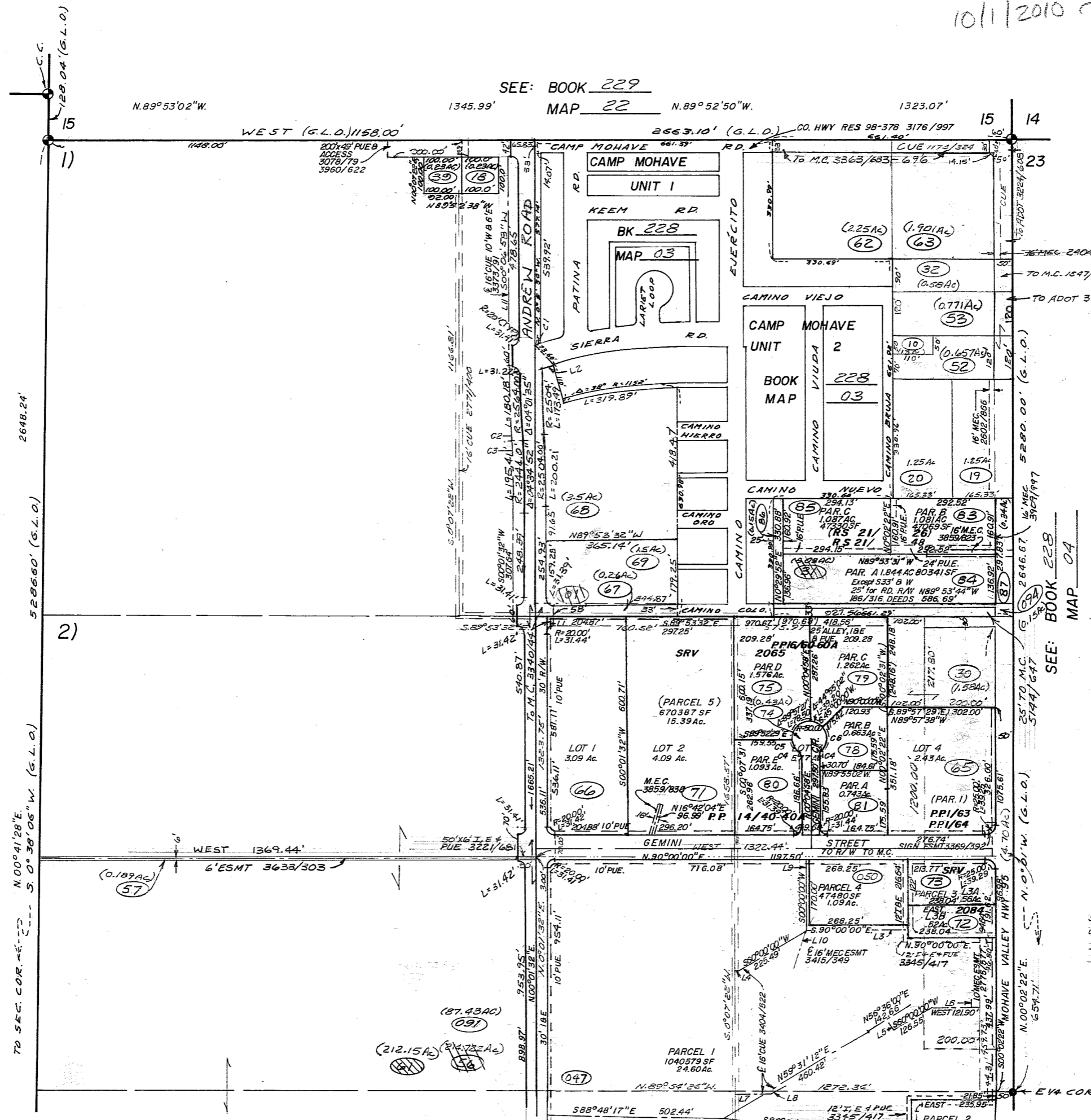


VOID SEE GIS  
10/1/2010 YQ

FORT MOHAVE INDIAN RESERVATION



PLAT LOCATION	REC. DATE	FEE No.
P.P.1/63	10/15/79	79-34224
DED. MOHAVE VLY HWY & PAR 1	79-34224	
P.P.1/64	10/15/79	79-34225
DED. MOHAVE VLY HWY & PAR 1	79-34225	
PP 14/40-40A	9/1/98	98-52941
PAR. E1/2 SEC. 22	98-52941	
SRV. 2065	6/10/1999	99-35368
PAR. 5 of PP 14/40-40A	99-35368	
SRV. 2084	10/8/1999	99-59936
PAR. 3 of PP 14/40A	99-59936	
P.P.16/60-60A	11/15/2000	2000-62953
LOT 3 (SRV. 2065)	2000-62953	
RS 21/26	7/10/2001	2001-41307
1/2 SE 1/4 NE 1/4 NE 1/4	2001-41307	
RS 21/48	9/27/2001	2001-59180
AMENDS RS 21/26	2001-59180	

SEE: BOOK 228  
MAP 04

5162/163 WATERLINE ESMT  
ON 083, 084 & 085  
5162/873 ACCESS ESMT  
ON 083 & 084



SCALE: 1" = 300'

SEE MAP 2 OF 2

JULY 8, 2005  
19N. 22W. N1/2 22  
Date

- L1 N00°00'00"W 24.99'
- L2 N73°21'42"E 37.50'
- L3 WEST 270.41'
- L4 WEST 15.73'
- L5 N30°00'00"W 22.00'
- L6 NORTH 25.13'
- L7 EAST 114.60'
- LB N60°00'00"E 43.87'
- L9 SOUTH 185.00'
- L10 S17°44'27"W 107.12'
- L11 S00°01'32"W 573.81'
- C1 R=1328.00' L=14.58' Δ=00°37'45" RADIAL= S17°13'43"E
- C2 R=2588.1' L=206.95'
- C3 R=2420' L=193.50'
- C4 R=25.00' L=21.03' Δ=48°11'23"
- C5 R=50.00' L=42.09' Δ=45°3'56"
- C6 R=50.00' L=51.40' Δ=93°16'20"